

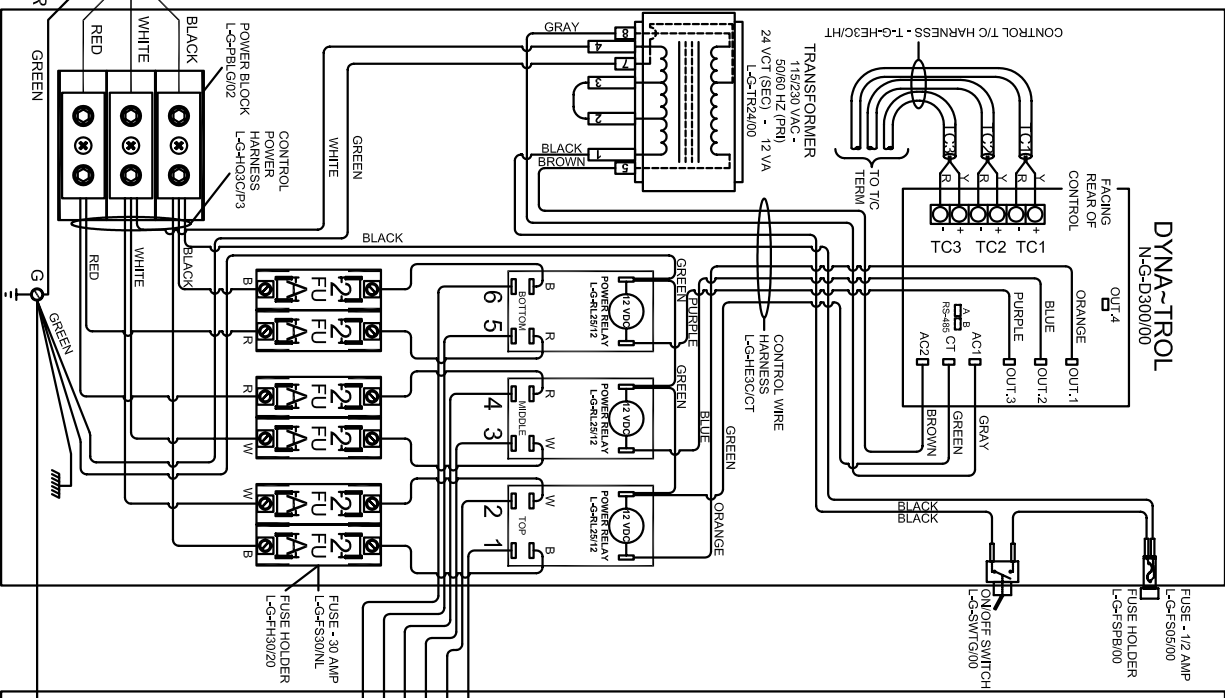
**NOTES:**

Control Wire:  
16 AWG, 105°C  
Power Wire:  
10 AWG, 150°C

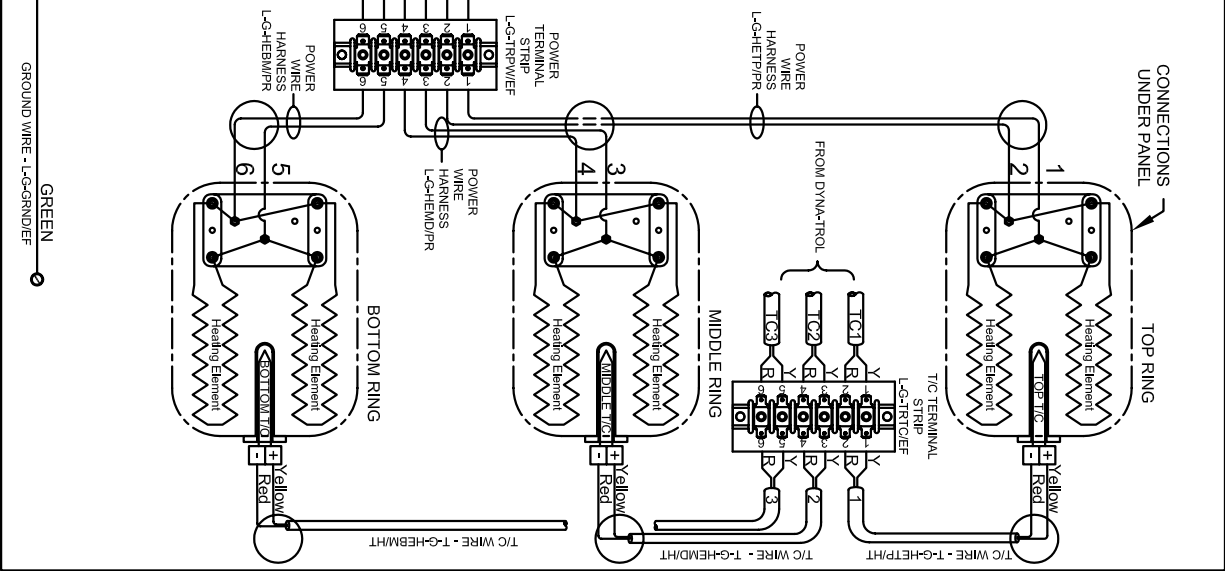
Industrial & commercial applications may require the installation of a LOCKOUT/TAGOUT device to prevent the Kiln from operating during maintenance.

This Kiln is recommended to be wired & connected to an approved U. L. & NEC configured receptacle controlled with a disconnect switch and properly fused according to the KW load load specification listed on the Kin Nameplate. L&L Kin Mfg., Inc. also recommends fuses rather than circuit breakers to prevent nuisance tripping.

LOOKING INSIDE CONTROL PANEL



LOOKING AT OUTSIDE OF ELEMENT COVER PANEL



**Model eQ2827-3**

VOLTAGE	208 / 3 / 50-60		
WATTS	14,950		
FULL LOAD AMPS	L1	L2	L3
	41.5	41.5	41.5
POWER SUPPLY	FUSE	WIRE	
	60A	6 AWG	
ELEMENTS (E-Q-2827/20)	QTY	OHMS	
	6	16.7	

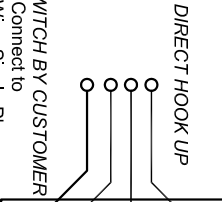
**Model eQ2827-3**

VOLTAGE	220 / 3 / 50-60		
WATTS	14,950		
FULL LOAD AMPS	L1	L2	L3
	39.3	39.3	39.3
POWER SUPPLY	FUSE	WIRE	
	50A	6 AWG	
ELEMENTS (E-Q-2827/40)	QTY	OHMS	
	6	XX.X	

**Model eQ2827-3**

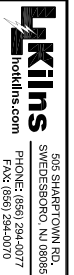
VOLTAGE	240 / 3 / 50-60		
WATTS	14,950		
FULL LOAD AMPS	L1	L2	L3
	36.0	36.0	36.0
POWER SUPPLY	FUSE	WIRE	
	50A	6 AWG	
ELEMENTS (E-Q-2827/30)	QTY	OHMS	
	6	22.3	

**SAFETY SWITCH BY CUSTOMER**  
Connect to  
240 Volt, 2 Wire, Single Phase - or  
220 Volt, 2 Wire, Single Phase - or  
208 Volt, 2 Wire, Single Phase  
50 or 60 Cycles.



DRAWING NO. **K352-152**

SHEET OF **1/1** REV **A**



TITLE **eQUAD-PRO SERIES eQ2827-3 KILN 3 PHASE WIRING DIAGRAM**

SCALE **1 = 8**

DATE **9/11/09**

DRAWN BY **BMM**

FILE NAME **\K352-152.dwg**

MADE FROM **\KSH090902.dwg**

REV #	DATE	DESCRIPTION
1		INITIAL
2		REVISION
3		REVISION
4		REVISION
5		REVISION