

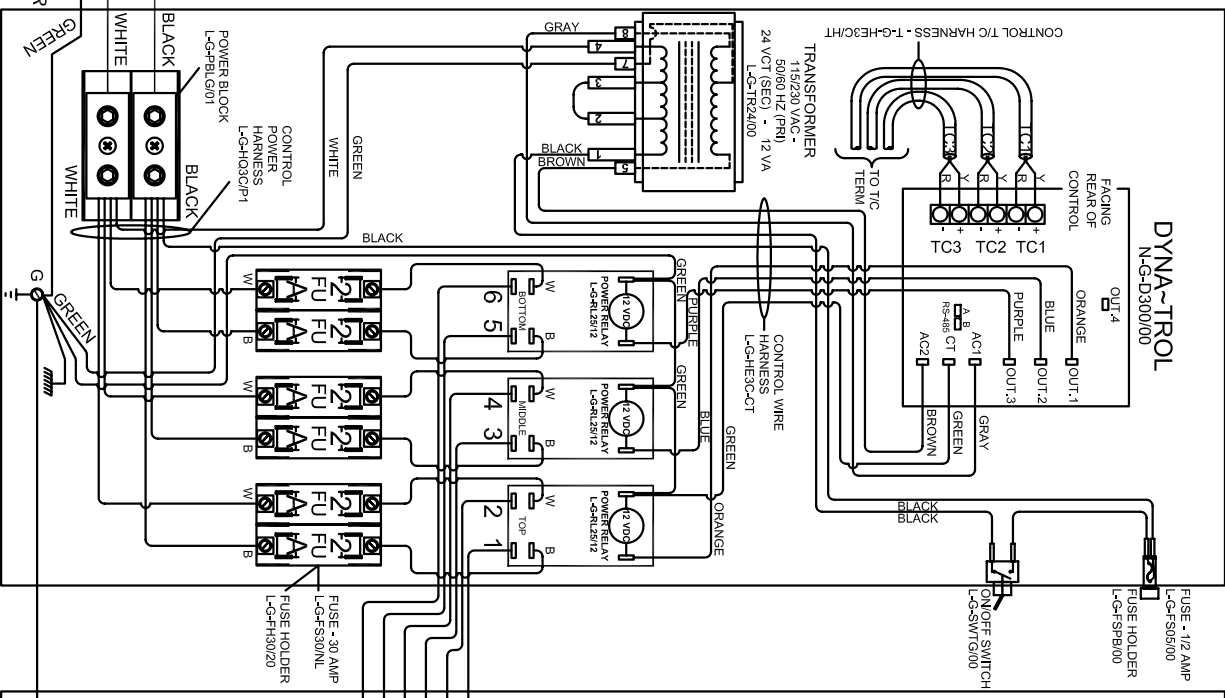
NOTES:

Control Wire:
16 AWG, 105°C
Power Wire:
10 AWG, 150°C

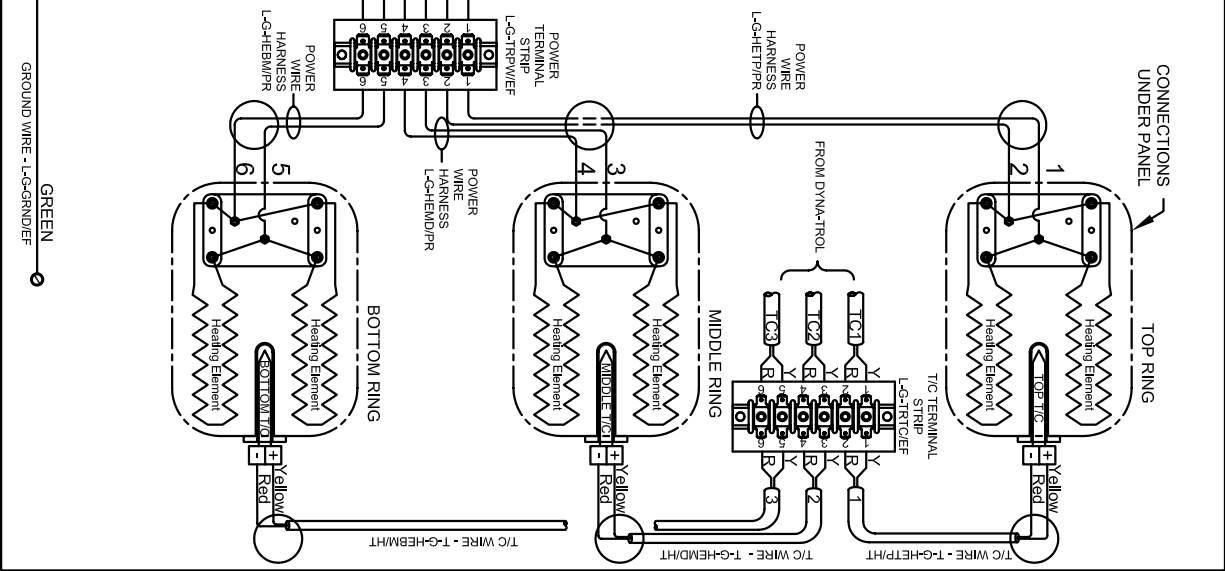
Industrial & commercial applications may require the installation of a LOCKOUT/TAGOUT device to prevent the Kiln from operating during maintenance.

This Kiln is recommended to be wired & connected to an approved U. L. & NEC configured receptacle controlled with a disconnect switch and properly fused according to the KW load on the Kiln Nameplate. L&L Kiln Mfg., Inc. also recommends fuses rather than circuit breakers to prevent nuisance tripping.

LOOKING INSIDE CONTROL PANEL



LOOKING AT OUTSIDE OF ELEMENT COVER PANEL



SAFETY SWITCH BY CUSTOMER
Connect to
240 Volt, 2 Wire, Single Phase - or
220 Volt, 2 Wire, Single Phase - or
208 Volt, 2 Wire, Single Phase
50 or 60 Cycles.

DRAWING NO. **K352-151** SHEET OF **1/1** REV **B**

LJKINS
SWEDESBORO, NJ 08865
PHONE: (908) 294-0077
FAX: (908) 294-0070

TITLE
**eQUAD-PRO SERIES eQ2827-3 KILN
1 PHASE WIRING DIAGRAM**

SCALE **1 = 8** DATE **9/11/09** DRAWN BY **BMM**

FILE NAME **\K352-151.dwg** MADE FROM **\KSH090901.dwg**

Model eQ2827-3	
VOLTAGE	208 / 1 / 50-60
WATTS	14,950
FULL LOAD AMPS	L1 L2 L3 71.9 71.9 X
POWER SUPPLY	FUSE WIRE 90A 2 AWG
ELEMENTS (E-Q-2827/20)	QTY OHMS 6 16.7

Model eQ2827-3	
VOLTAGE	220 / 1 / 50-60
WATTS	14,950
FULL LOAD AMPS	L1 L2 L3 68.0 68.0 X
POWER SUPPLY	FUSE WIRE 90A 2 AWG
ELEMENTS (E-Q-2827/40)	QTY OHMS 6 XX.X

Model eQ2827-3	
VOLTAGE	240 / 1 / 50-60
WATTS	14,950
FULL LOAD AMPS	L1 L2 L3 62.3 62.3 X
POWER SUPPLY	FUSE WIRE 80A 3 AWG
ELEMENTS (E-Q-2827/30)	QTY OHMS 6 22.3

REV. #	DATE	DESCRIPTION
1		INITIAL DESIGN
2		REVISED
3		REVISED
4		REVISED
5		REVISED
6		REVISED