

SINGLE PHASE MODELS:

MODEL JD2927-JH	
VOLTAGE	208 / 1 / 50-60
WATTS	18,039
FULL LOAD AMPS	L1 L2 L3 86.7 86.7 X
POWER SUPPLY	FUSE WIRE 125A 1/0 AWG
ELEMENTS (E-J-290Q/2K)	QTY OHMS 6 13.9
VOLTAGE	220 / 1 / 50-60
WATTS	18,039
FULL LOAD AMPS	L1 L2 L3 82.0 82.0 X
POWER SUPPLY	FUSE WIRE 125A 1/0 AWG
ELEMENTS (E-J-290Q/4K)	QTY OHMS 6 15.5
VOLTAGE	240 / 1 / 50-60
WATTS	18,039
FULL LOAD AMPS	L1 L2 L3 75.2 75.2 X
POWER SUPPLY	FUSE WIRE 100A 1 AWG
ELEMENTS (E-J-290Q/3K)	QTY OHMS 6 18.4

THREE PHASE MODELS:

MODEL JD2927-JH	
VOLTAGE	208 / 3 / 50-60
WATTS	18,039
FULL LOAD AMPS	L1 L2 L3 50.1 50.1 50.1
POWER SUPPLY	FUSE WIRE 70A 4 AWG
ELEMENTS (E-J-290Q/2K)	QTY OHMS 6 13.9
VOLTAGE	220 / 3 / 50-60
WATTS	18,039
FULL LOAD AMPS	L1 L2 L3 47.4 47.4 47.4
POWER SUPPLY	FUSE WIRE 60A 6 AWG
ELEMENTS (E-J-290Q/4K)	QTY OHMS 6 15.5
VOLTAGE	240 / 3 / 50-60
WATTS	18,039
FULL LOAD AMPS	L1 L2 L3 43.5 43.5 43.5
POWER SUPPLY	FUSE WIRE 60A 6 AWG
ELEMENTS (E-J-290Q/3K)	QTY OHMS 6 18.4

1 PHASE CONTROL PANELS:

MODEL	(AUTO/MANUAL)	WIRING DIAGRAM
JD2927-JH	(AUTO)	K264-153
.	.	.
.	.	.

3 PHASE CONTROL PANELS:

MODEL	(AUTO/MANUAL)	WIRING DIAGRAM
JD2927-JH	(AUTO)	K264-154
.	.	.
.	.	.

SEE CONTROL PANEL WIRING DIAGRAM FOR WIRING CONNECTIONS TO KILN ZONE RECEPTACLES

NOTES:

Industrial & commercial applications may require the installation of a LOCKOUT/TAGOUT device to prevent the Kiln from operating during maintenance.

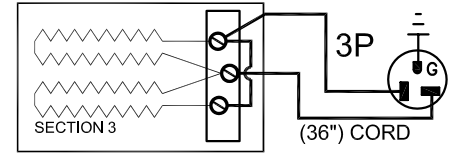
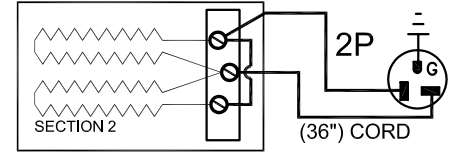
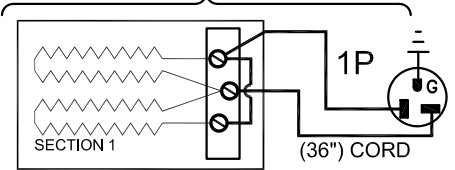
This Kiln is recommended to be wired & connected to an approved U. L. & NEC configured disconnect switch and properly fused according to the KW load specification listed on the Kiln Nameplate. L&L Kiln Mfg., Inc., also recommends fuses rather than circuit breakers to prevent nuisance tripping.

ELECTRICAL PARTS LIST

SYMBOL	QTY	DESCRIPTION	CUSTOMER PART NO.
P	3	36" PLUGS NEMA 6-20P	L-JC36/00
.	.	.	.
.	.	.	.

KILN ASSEMBLY

SECTIONS CONTROLLED BY EACH OF THE 'DYNA-TROL' OUTPUTS:
OUTPUT #1 (TOP)
OUTPUT #2 (CENTER)
OUTPUT #3 (BOTTOM)



Output Numbers refer to Dyna-Trol Outputs on Automatic Kilns only.



CAUTION: DO NOT PLUG KILN SECTIONS DIRECTLY TO LINE VOLTAGE

C	5/17/11	PREVIOUSLY WAS KSH080602
B	10/19/09	EDITED MODEL NUMBER INFORMATION
A	9/18/08	UPDATED ELECTRICAL SPECIFICATIONS
0	6/5/08	FIRST ISSUE
REV#	DATE	REVISION DESCRIPTION



505 SHARPTOWN ROAD
SWEDESBORO, NJ 08085

PHONE: (856) 294-0077
FAX: (856) 294-0070

TITLE **JH SERIES KILN WIRING DIAGRAM**
MODEL JD2927-JH CRYSTALLINE KILN
1 or 3 PHASE KILN ASSEMBLY
3 SECTIONS, No Power Bottom

DRAWN BY	B.N.M.	REV. CODE	C	DRAWING NO.	K043-160
DATE	6/5/08	SCALE	1 = 8	CHK	S.J.L.
JOB NO.	SER NO.	SHEET NO.	OF	FILE NAME	IK043-160.dwg
MADE FROM	IK043-110.dwg				