

**SINGLE PHASE MODELS:**

MODEL J2927L	
VOLTAGE	208 / 1 / 50-60
KW	10.0
FULL LOAD AMPS	L1   L2   L3 48.0   48.0   X
POWER SUPPLY	FUSE   WIRE 60A   6 AWG
ELEMENTS (E-J-297L/20)	QTY   OHMS 6   39.0
VOLTAGE	220 / 1 / 50-60
KW	10.6
FULL LOAD AMPS	L1   L2   L3 48.0   48.0   X
POWER SUPPLY	FUSE   WIRE 60A   6 AWG
ELEMENTS (E-J-297L/40)	QTY   OHMS 6   41.3
VOLTAGE	240 / 1 / 50-60
KW	11.5
FULL LOAD AMPS	L1   L2   L3 47.9   47.9   X
POWER SUPPLY	FUSE   WIRE 60A   6 AWG
ELEMENTS (E-J-297L/30)	QTY   OHMS 6   45.1

**THREE PHASE MODELS:**

MODEL JD2927L	
VOLTAGE	208 / 3 / 50-60
KW	10.0
FULL LOAD AMPS	L1   L2   L3 27.7   27.7   27.7
POWER SUPPLY	FUSE   WIRE 40A   8 AWG
ELEMENTS (E-J-297L/20)	QTY   OHMS 6   39.0
VOLTAGE	220 / 3 / 50-60
KW	10.6
FULL LOAD AMPS	L1   L2   L3 27.7   27.7   27.7
POWER SUPPLY	FUSE   WIRE 40A   8 AWG
ELEMENTS (E-J-297L/40)	QTY   OHMS 6   41.3
VOLTAGE	240 / 3 / 50-60
KW	11.5
FULL LOAD AMPS	L1   L2   L3 27.7   27.7   27.7
POWER SUPPLY	FUSE   WIRE 40A   8 AWG
ELEMENTS (E-J-297L/30)	QTY   OHMS 6   45.1

**1 PHASE CONTROL PANELS:**

MODEL	(AUTO/MANUAL)	WIRING DIAGRAM
JD2927L	(AUTO)	K262-151

**3 PHASE CONTROL PANELS:**

MODEL	(AUTO/MANUAL)	WIRING DIAGRAM
JD2927L	(AUTO)	K262-152



**SEE CONTROL PANEL WIRING DIAGRAM FOR WIRING CONNECTIONS TO KILN ZONE RECEPTACLES**

**NOTES:**

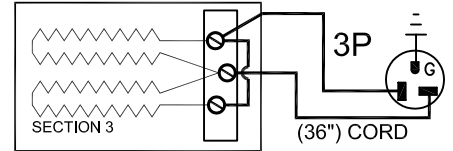
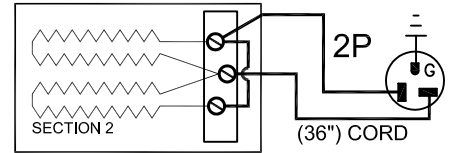
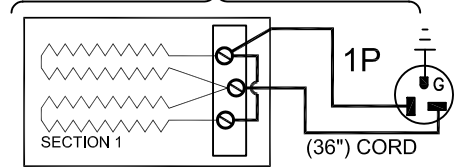
Industrial & commercial applications may require the installation of a LOCKOUT/TAGOUT device to prevent the Kiln from operating during maintenance.

This Kiln is recommended to be wired & connected to an approved U. L. & NEC configured disconnect switch and properly fused according to the KW load specification listed on the Kiln Nameplate. L&L Kiln Mfg., Inc., also recommends fuses rather than circuit breakers to prevent nuisance tripping.

**ELECTRICAL PARTS LIST**

SYMBOL	QTY	DESCRIPTION	CUSTOMER PART NO.
P	3	36" PLUGS NEMA 6-20P	L-J-JC36/00

**KILN ASSEMBLY**



SECTIONS CONTROLLED BY EACH OF THE 'DYNA-TROL' OUTPUTS:  
OUTPUT #1 (TOP)  
OUTPUT #2 (CENTER)  
OUTPUT #3 (BOTTOM)

Output Numbers refer to Dyna-Trol Outputs on Automatic Kilns only.



**CAUTION: DO NOT PLUG KILN SECTIONS DIRECTLY TO LINE VOLTAGE**

REV#	DATE	REVISION DESCRIPTION
A	6/15/09	REPLACED UL MARK WITH MET CERTIFIED MARK & ADDED NEW LOGO
0	9/18/02	MISC CORRECTIONS FOR RELEASE / DISCONTINUED HAND-HELD

**L&L Kilns**  
hotkilns.com  
505 SHARPTOWN ROAD  
SWEDESBORO, NJ 08085  
PHONE: (856) 294-0077  
FAX: (856) 294-0070

TITLE: **JUPITER KILN WIRING DIAGRAM  
MODEL JD2927L  
1 or 3 PHASE KILN ASSEMBLY  
3 SECTIONS, No Power Bottom**

DRAWN BY: <b>G.W.L.</b>	REV. CODE: <b>A</b>	DRAWING NO.: <b>K043-112</b>
DATE: 1/10/00	SCALE: 1 = 8	
CHK: G.D.L.	APP:	
JOB NO:	SER NO:	SHEET NO.   OF
FILE NAME: L:\EVL\KILN\WIRING\KLN\K043-112.DWG	MADE FROM:	USERIES\K043-101.dwg