

SINGLE PHASE MODELS:

MODEL JD230SV	
VOLTAGE	208 / 1 / 50-60
KW	10.8
FULL LOAD AMPS	L1 L2 L3 51.9 51.9 X
POWER SUPPLY	FUSE WIRE 70A 4 AWG
ELEMENTS (E-J-230S/2V)	QTY OHMS 6 5.79
VOLTAGE	220 / 1 / 50-60
KW	11.4
FULL LOAD AMPS	L1 L2 L3 51.9 51.9 X
POWER SUPPLY	FUSE WIRE 70A 4 AWG
ELEMENTS (E-J-230S/4V)	QTY OHMS 6 6.13
VOLTAGE	240 / 1 / 50-60
KW	12.5
FULL LOAD AMPS	L1 L2 L3 51.9 51.9 X
POWER SUPPLY	FUSE WIRE 70A 4 AWG
ELEMENTS (E-J-230S/3V)	QTY OHMS 6 6.68

THREE PHASE MODELS:

MODEL JD230SV	
VOLTAGE	208 / 3 / 50-60
KW	10.8
FULL LOAD AMPS	L1 L2 L3 30.0 30.0 30.0
POWER SUPPLY	FUSE WIRE 40A 8 AWG
ELEMENTS (E-J-230S/2V)	QTY OHMS 6 5.79
VOLTAGE	220 / 3 / 50-60
KW	11.4
FULL LOAD AMPS	L1 L2 L3 30.0 30.0 30.0
POWER SUPPLY	FUSE WIRE 40A 8 AWG
ELEMENTS (E-J-230S/4V)	QTY OHMS 6 6.13
VOLTAGE	240 / 3 / 50-60
KW	12.5
FULL LOAD AMPS	L1 L2 L3 30.0 30.0 30.0
POWER SUPPLY	FUSE WIRE 40A 8 AWG
ELEMENTS (E-J-230S/3V)	QTY OHMS 6 6.68

1 PHASE CONTROL PANELS:

MODEL	(AUTO/MANUAL)	WIRING DIAGRAM
JD230SV	(AUTO)	K262-153
.	.	.
.	.	.

3 PHASE CONTROL PANELS:

MODEL	(AUTO/MANUAL)	WIRING DIAGRAM
JD230SV	(AUTO)	K262-154
.	.	.
.	.	.



SEE CONTROL PANEL WIRING DIAGRAM FOR WIRING CONNECTIONS TO KILN ZONE RECEPTACLES

NOTES:

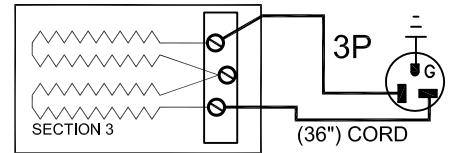
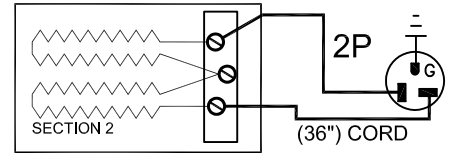
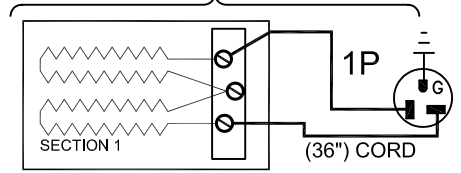
Industrial & commercial applications may require the installation of a LOCKOUT/TAGOUT device to prevent the Kiln from operating during maintenance.

This Kiln is recommended to be wired & connected to an approved U. L. & NEC configured disconnect switch and properly fused according to the KW load specification listed on the Kiln Nameplate. L&L Kiln Mfg., Inc., also recommends fuses rather than circuit breakers to prevent nuisance tripping.

ELECTRICAL PARTS LIST

SYMBOL	QTY	DESCRIPTION	CUSTOMER PART NO.
P	3	36" PLUGS NEMA 6-20P	L-JC36/00
.	.	.	.
.	.	.	.

KILN ASSEMBLY



SECTIONS CONTROLLED BY EACH OF THE 'DYNA-TROL' OUTPUTS:
OUTPUT #1 (TOP)
OUTPUT #2 (CENTER)
OUTPUT #3 (BOTTOM)

Output Numbers refer to Dyna-Trol Outputs on Automatic Kilns only.



CAUTION: DO NOT PLUG KILN SECTIONS DIRECTLY TO LINE VOLTAGE

.	.	.
.	.	.
A	6/15/09	REPLACED UL MARK WITH MET CERTIFIED MARK & ADDED NEW LOGO
0	10/18/04	FIRST ISSUE
REV#	DATE	REVISION DESCRIPTION

L&L Kilns
hotkilns.com
505 SHARPTOWN ROAD
SWEDESBORO, NJ 08085
PHONE: (856) 294-0077
FAX: (856) 294-0070

TITLE: **JUPITER KILN WIRING DIAGRAM
MODEL JD230SV
FOR LARGE HEAVY-DUTY SERIES ELEMENTS
1 or 3 PHASE KILN ASSEMBLY
3 SECTIONS, No Power Bottom**

DRAWN BY	G.D.L.	REV. CODE	DRAWING NO.
DATE	10/18/04	SCALE	1 = 8
CHK	G.D.L.	APP	A K037-122
JOB NO.	SER NO.	SHEET NO. OF	
FILE NAME	L:\E\LLKILN\WIRING\KLN K037-122.dwg	MADE FROM	K037-112