

SINGLE PHASE MODELS:

MODEL J18X & JD18X	
VOLTAGE	208 / 1 / 50-60
KW	8.28
FULL LOAD AMPS	L1 L2 L3 39.8 39.8 X
POWER SUPPLY	FUSE WIRE 50A 6 AWG
ELEMENTS (E-J-1800/20)	QTY OHMS 6 7.8
VOLTAGE	220 / 1 / 50-60
KW	8.28
FULL LOAD AMPS	L1 L2 L3 37.6 37.6 X
POWER SUPPLY	FUSE WIRE 50A 6 AWG
ELEMENTS (E-J-1800/40)	QTY OHMS 6 8.8
VOLTAGE	240 / 1 / 50-60
KW	8.28
FULL LOAD AMPS	L1 L2 L3 34.5 34.5 X
POWER SUPPLY	FUSE WIRE 50A 6 AWG
ELEMENTS (E-J-1800/30)	QTY OHMS 6 10.4

THREE PHASE MODELS:

MODELS J18X & JD18X	
VOLTAGE	208 / 3 / 50-60
KW	8.28
FULL LOAD AMPS	L1 L2 L3 23.0 23.0 23.0
POWER SUPPLY	FUSE WIRE 30A 10 AWG
ELEMENTS (E-J-1800/20)	QTY OHMS 6 7.8
VOLTAGE	220 / 3 / 50-60
KW	8.28
FULL LOAD AMPS	L1 L2 L3 21.7 21.7 21.7
POWER SUPPLY	FUSE WIRE 30A 10 AWG
ELEMENTS (E-J-1800/40)	QTY OHMS 6 8.8
VOLTAGE	240 / 3 / 50-60
KW	8.28
FULL LOAD AMPS	L1 L2 L3 19.9 19.9 19.9
POWER SUPPLY	FUSE WIRE 30A 10 AWG
ELEMENTS (E-J-1800/30)	QTY OHMS 6 10.4

1 PHASE CONTROL PANELS:

MODEL	(AUTO/MANUAL)	WIRING DIAGRAM
J18X	(MANUAL)	K262-101
JD18X	(AUTO)	K262-151

3 PHASE CONTROL PANELS:

MODEL	(AUTO/MANUAL)	WIRING DIAGRAM
J18X	(MANUAL)	K262-102
JD18X	(AUTO)	K262-152



SEE CONTROL PANEL WIRING DIAGRAM FOR WIRING CONNECTIONS TO KILN ZONE RECEPTACLES

NOTES:

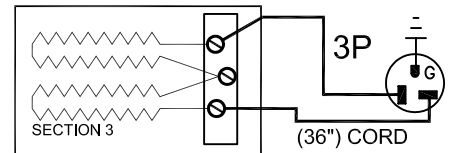
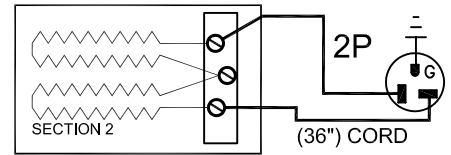
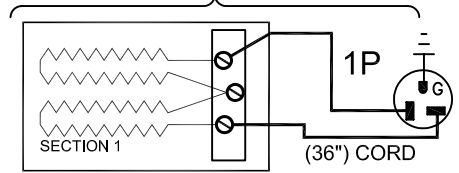
Industrial & commercial applications may require the installation of a LOCKOUT/TAGOUT device to prevent the Kiln from operating during maintenance.

This Kiln is recommended to be wired & connected to an approved U. L. & NEC configured disconnect switch and properly fused according to the KW load specification listed on the Kiln Nameplate. L&L Kiln Mfg., Inc., also recommends fuses rather than circuit breakers to prevent nuisance tripping.

ELECTRICAL PARTS LIST

SYMBOL	QTY	DESCRIPTION	CUSTOMER PART NO.
P	3	36" PLUGS NEMA 6-20P	L-J-JC36/00
.	.	.	.
.	.	.	.

KILN ASSEMBLY



SECTIONS CONTROLLED BY EACH OF THE 'DYNA-TROL' OUTPUTS:
OUTPUT #1 (TOP)
OUTPUT #2 (CENTER)
OUTPUT #3 (BOTTOM)

Output Numbers refer to Dyna-Trol Outputs on Automatic Kilns only.



CAUTION: DO NOT PLUG KILN SECTIONS DIRECTLY TO LINE VOLTAGE

REV#	DATE	REVISION DESCRIPTION
A	6/15/09	REPLACED UL MARK WITH MET CERTIFIED MARK & ADDED NEW LOGO
0	7/23/02	MISC CORRECTIONS FOR RELEASE / DISCONTINUED HAND-HELD

L&L Kilns
hotkilns.com
505 SHARPTOWN ROAD
SWEDESBORO, NJ 08085
PHONE: (856) 294-0077
FAX: (856) 294-0070

TITLE: **JUPITER KILN WIRING DIAGRAM**
MODELS J18X and JD18X
1 or 3 PHASE KILN ASSEMBLY
3 SECTIONS, No Power Bottom

DRAWN BY	G.D.L.	REV. CODE	A	DRAWING NO.	K032-110
DATE	01/09/01	SCALE	1 = 8		
CHK	G.D.L.	APP	.		
JOB NO.		SER NO.		SHEET NO.	1 OF 1
FILE NAME	L:\E\11\KILN\WIRING\KLN	MADE FROM			USERIES\K032-100.dwg