

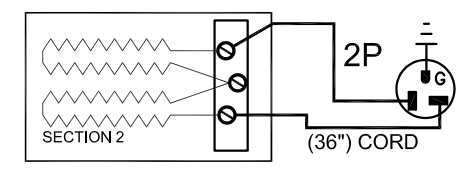
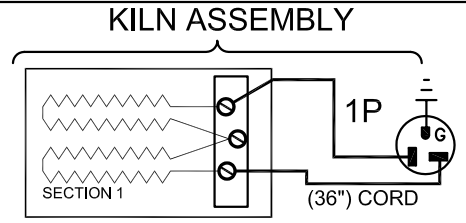
SINGLE PHASE MODELS:

MODEL JD18-JH	
VOLTAGE	208 / 1 / 50-60
WATTS	8,800
FULL LOAD AMPS	L1 L2 L3 42.3 42.3 X
POWER SUPPLY	FUSE WIRE 60A 6 AWG
ELEMENTS (E-J-180Q/2K)	QTY OHMS 4 4.7
VOLTAGE	220 / 1 / 50-60
WATTS	8,800
FULL LOAD AMPS	L1 L2 L3 40.0 40.0 X
POWER SUPPLY	FUSE WIRE 50A 6 AWG
ELEMENTS (E-J-180Q/4K)	QTY OHMS 4 5.3
VOLTAGE	240 / 1 / 50-60
WATTS	8,800
FULL LOAD AMPS	L1 L2 L3 36.7 36.7 X
POWER SUPPLY	FUSE WIRE 50A 6 AWG
ELEMENTS (E-J-180Q/3K)	QTY OHMS 4 6.3

THREE PHASE MODELS:

MODEL JD18-JH	
VOLTAGE	208 / 3 / 50-60
WATTS	8,800
FULL LOAD AMPS	L1 L2 L3 21.2 36.8 21.2
POWER SUPPLY	FUSE WIRE 50A 6 AWG
ELEMENTS (E-J-180Q/2K)	QTY OHMS 4 4.7
VOLTAGE	220 / 3 / 50-60
WATTS	8,800
FULL LOAD AMPS	L1 L2 L3 20.0 34.7 20.0
POWER SUPPLY	FUSE WIRE 50A 6 AWG
ELEMENTS (E-J-180Q/4K)	QTY OHMS 4 5.3
VOLTAGE	240 / 3 / 50-60
WATTS	8,800
FULL LOAD AMPS	L1 L2 L3 18.4 31.7 18.3
POWER SUPPLY	FUSE WIRE 50A 6 AWG
ELEMENTS (E-J-180Q/3K)	QTY OHMS 4 6.3

SECTIONS CONTROLLED BY EACH OF THE 'DYNA-TROL' OUTPUTS:
OUTPUT #1 (TOP)
OUTPUT #2 (BOTTOM)



1 PHASE CONTROL PANELS:

MODEL	(AUTO/MANUAL)	WIRING DIAGRAM
J18-JH	(MANUAL)	K262-101
JD18-JH	(AUTO)	K262-151

3 PHASE CONTROL PANELS:

MODEL	(AUTO/MANUAL)	WIRING DIAGRAM
J18-JH	(MANUAL)	K262-102
JD18-JH	(AUTO)	K262-152

SEE CONTROL PANEL WIRING DIAGRAM FOR WIRING CONNECTIONS TO KILN ZONE RECEPTACLES

NOTES:

Industrial & commercial applications may require the installation of a LOCKOUT/TAGOUT device to prevent the Kiln from operating during maintenance.

This Kiln is recommended to be wired & connected to an approved U. L. & NEC configured disconnect switch and properly fused according to the KW load specification listed on the Kiln Nameplate. L&L Kiln Mfg., Inc., also recommends fuses rather than circuit breakers to prevent nuisance tripping.

Output Numbers refer to Dyna-Trol Outputs on Automatic Kilns only.



CAUTION: DO NOT PLUG KILN SECTIONS DIRECTLY TO LINE VOLTAGE

REV#	DATE	REVISION DESCRIPTION
B	5/17/11	PREVIOUSLY WAS KSH080903
A	6/25/09	ADDED THREE PHASE POWER INFORMATION
0	9/19/08	FIRST ISSUE

L&L Kilns
hotkilns.com
505 SHARPTOWN ROAD
SWEDESBORO, NJ 08085
PHONE: (856) 294-0077
FAX: (856) 294-0070

TITLE **JH SERIES KILN WIRING DIAGRAM**
MODELS JD18-JH CRYSTALLINE KILN
1 or 3 PHASE KILN ASSEMBLY
2 SECTIONS, No Power Bottom

ELECTRICAL PARTS LIST

SYMBOL	QTY	DESCRIPTION	CUSTOMER PART NO.
P	3	36" PLUGS NEMA 6-20P	L-J-JC36/00

DRAWN BY B.N.M.	REV. CODE	DRAWING NO.
DATE 9/19/08	SCALE 1 = 8	B K028-160
CHK S.J.L.	APP	
JOB NO	SER NO	SHEET NO. OF
FILE NAME IK028-160.dwg	MADE FROM	IK028-110.dwg