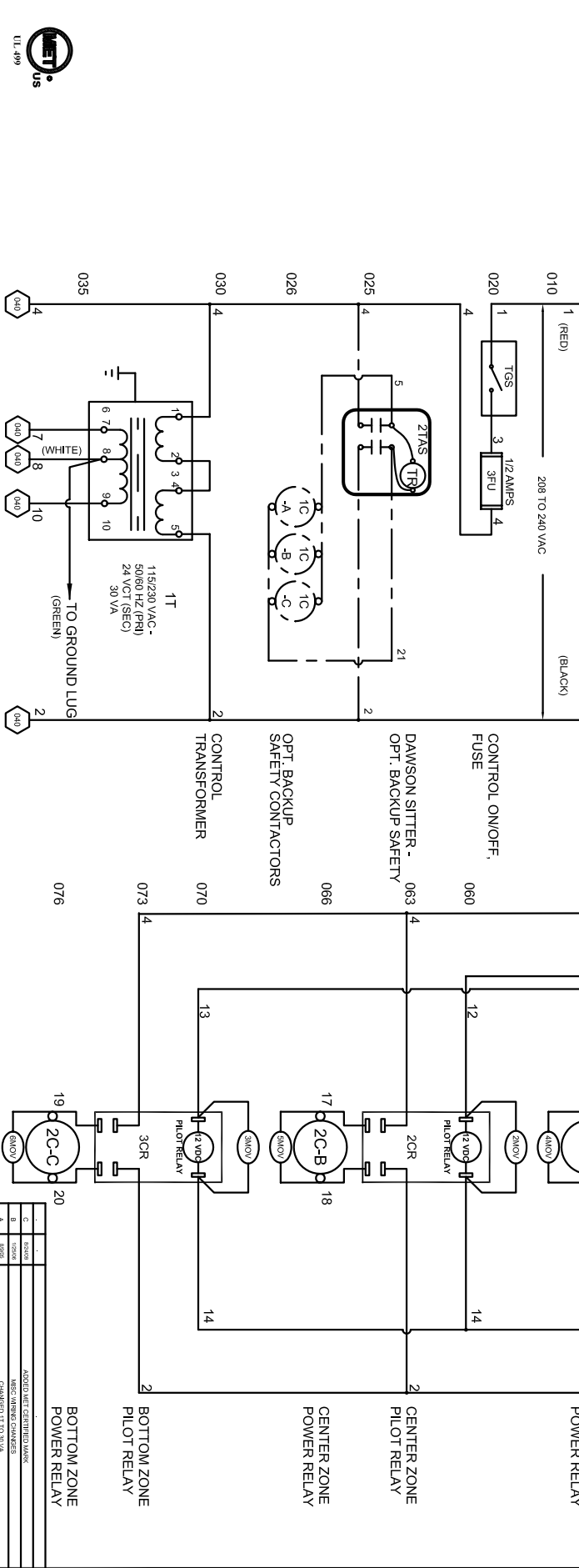
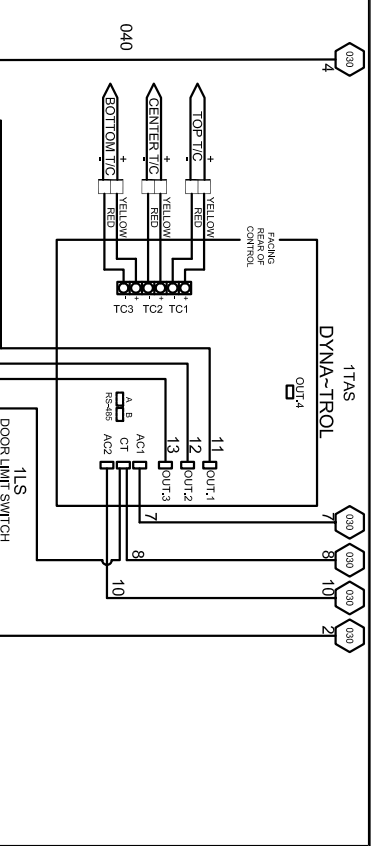
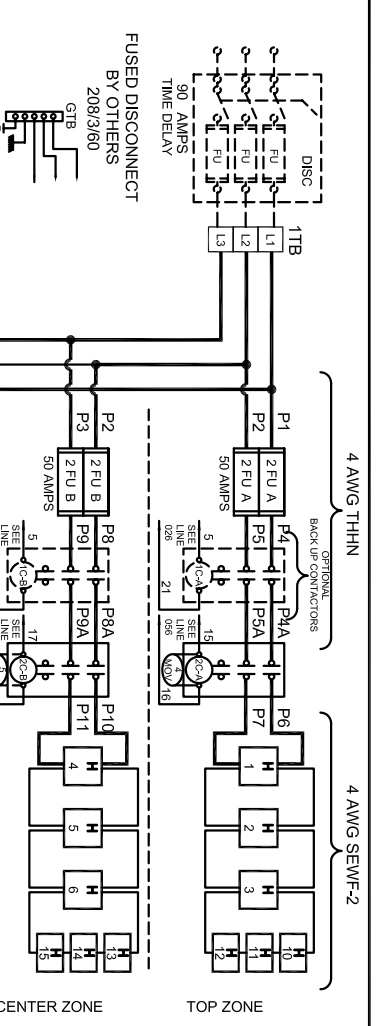


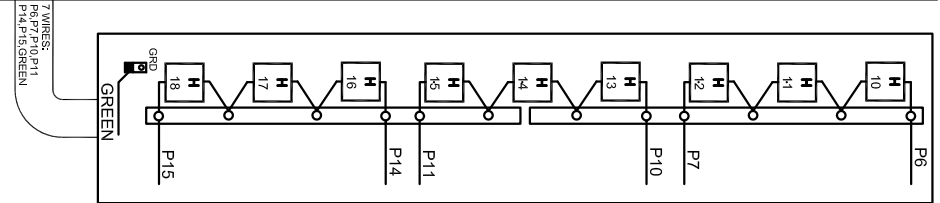
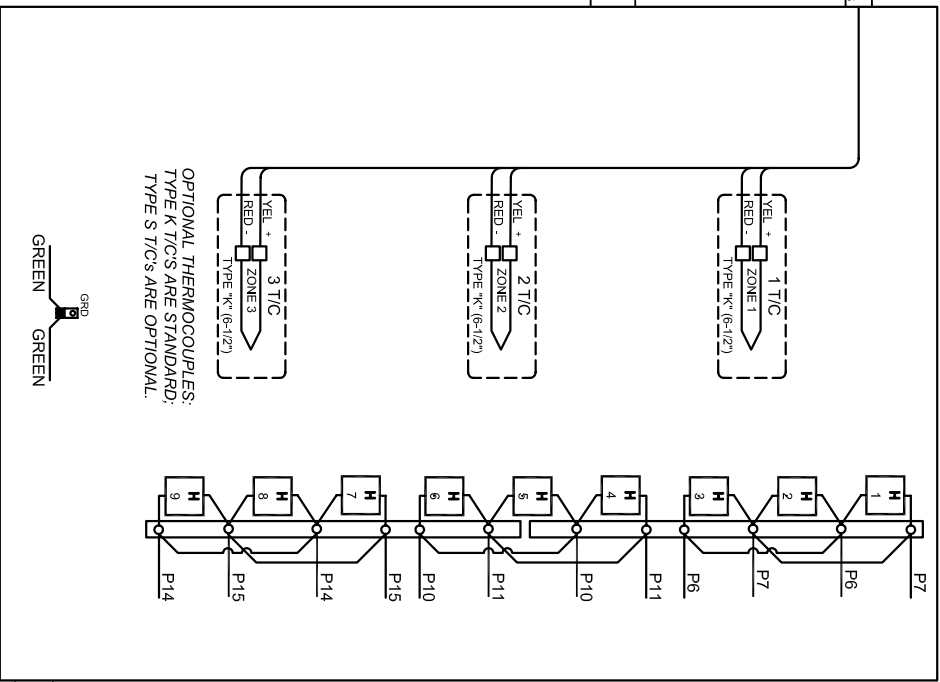
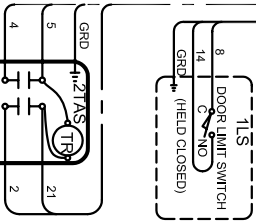
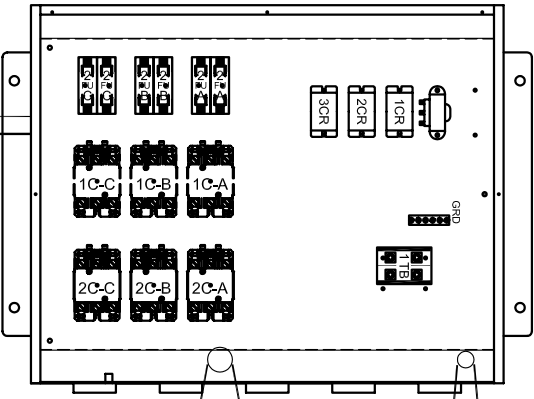
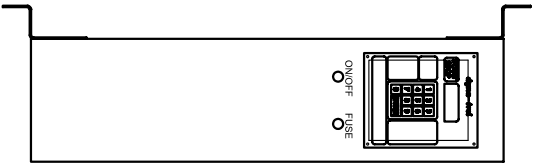
POWER REQUIREMENTS			
VOLTAGE	208 / 3 / 60		
H.P.	24.2		
FULL LOAD AMPS	L1	L2	L3
	68	68	68

SAFETY SWITCH BY CUSTOMER
 Connect to 208 Volt, 3 Phase
 50 or 60 Cycles.
SEE POWER REQUIREMENT TABLE





UL 499



- NOTES**
- 1) All electrical feeders & equipment will be supplied & installed by the customer. Meeting requirements set by the local & national electrical code standards. L & L recommends any such installation be approved by a certified electrical inspector.
 - 2) For Kilns not equipped with a fused safety disconnect switch, L & L recommends the customer to install such equipment within 6 feet of operating furnace.
 - 3) Industrial & commercial applications may require the installation of a LOCKOUT/TAGOUT device to meet safety & maintenance requirements.
 - 6) Wire gauge and insulation of Power Wires and Control Circuit Wires are as marked.
 - 7) Power Wire Color's Black, and wires are numbered as marked.
 - 8) Control Circuit Wires are numbered as marked, and colors are:
RED = 1, 3, 6, 8, 11, 13, 15, 17.
BLACK = 2, 14, 16, 18, 19.
WHITE = 7, 12.
GREEN = GROUNDING AND BONDING WIRES.

DRAWING NO. 350573-22 SHEET OF 2/2 REV. C L & L SPECIAL FURNACE CO. INC. 20 WEST 10TH ST. SUITE 2100 DENVER, CO 80202 TITLE MODEL E1 2448 WIRING DIAGRAM 208 Vac/3/60 - DYNA-TROL SCALE 1 = 10 DATE 12/21/04 DRAWN BY GDL FILE NAME L:\P\EL\E12448\350573-22.dwg MADE FROM \350572-22

REV. #	DATE	REVISION DESCRIPTION
A		ISSUE
B		ISSUE
C		ISSUE

APPROVED FOR CONSTRUCTION
 MECHANICAL CHANGES
 CHANGED TO 208VAC
 REVISION DESCRIPTION