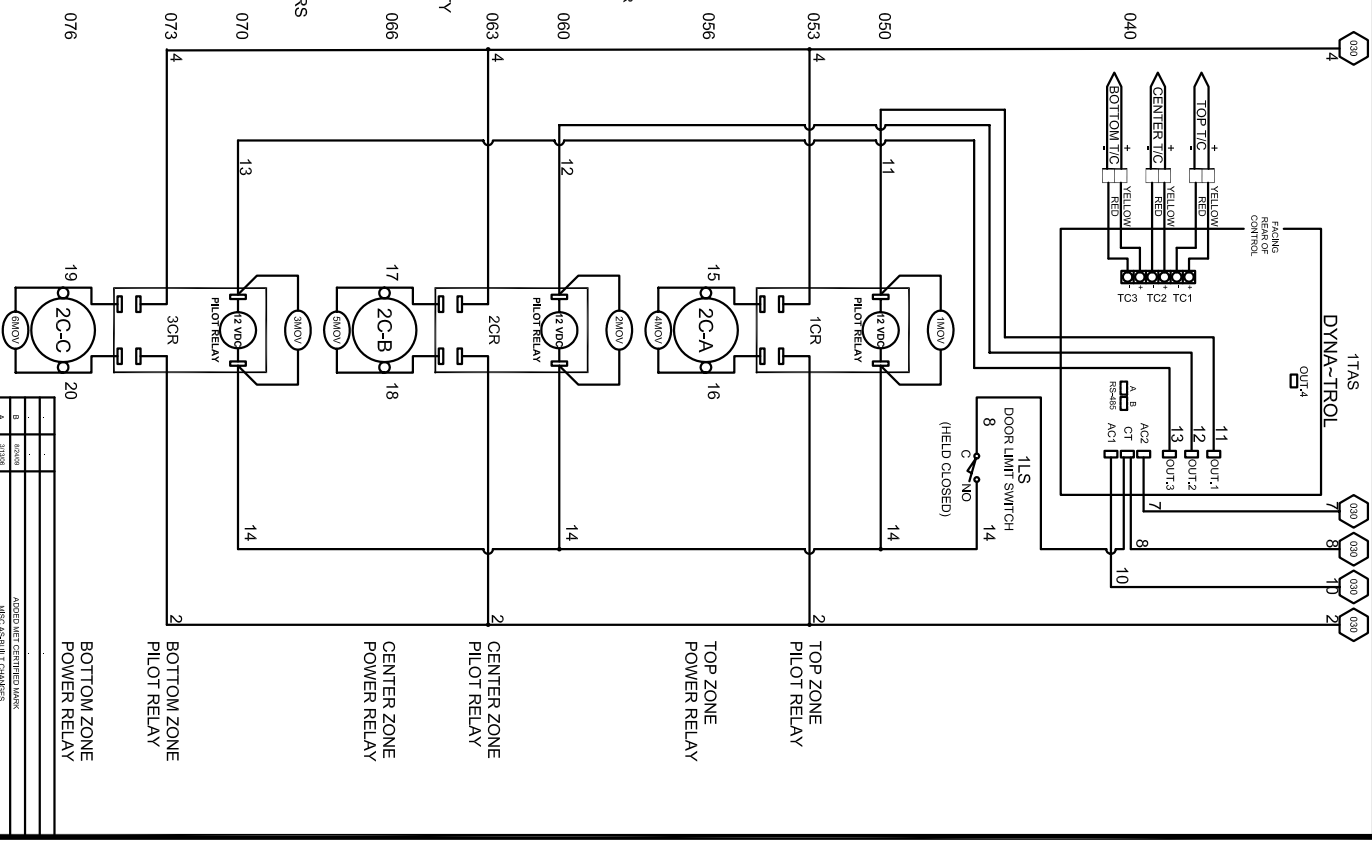
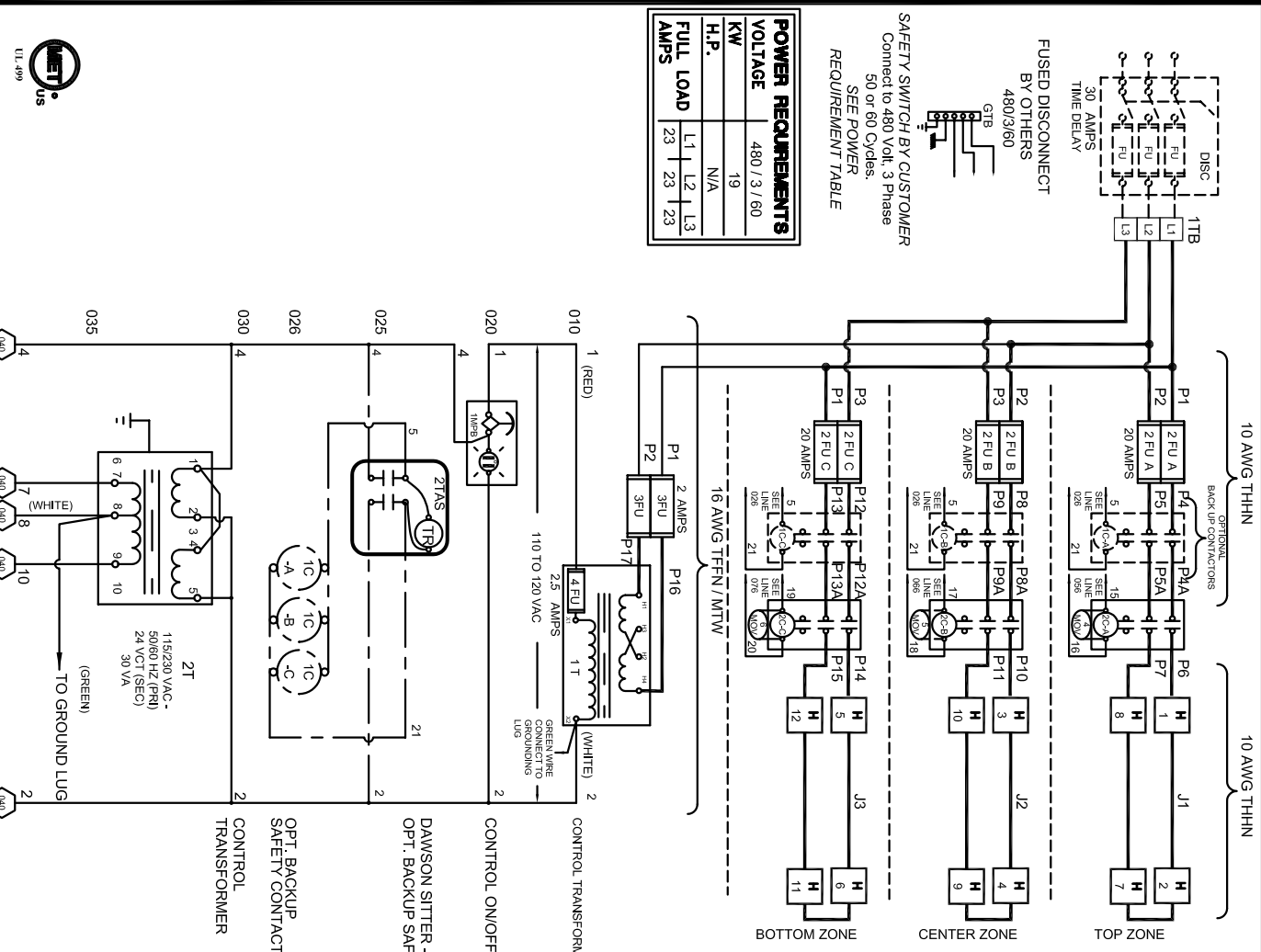
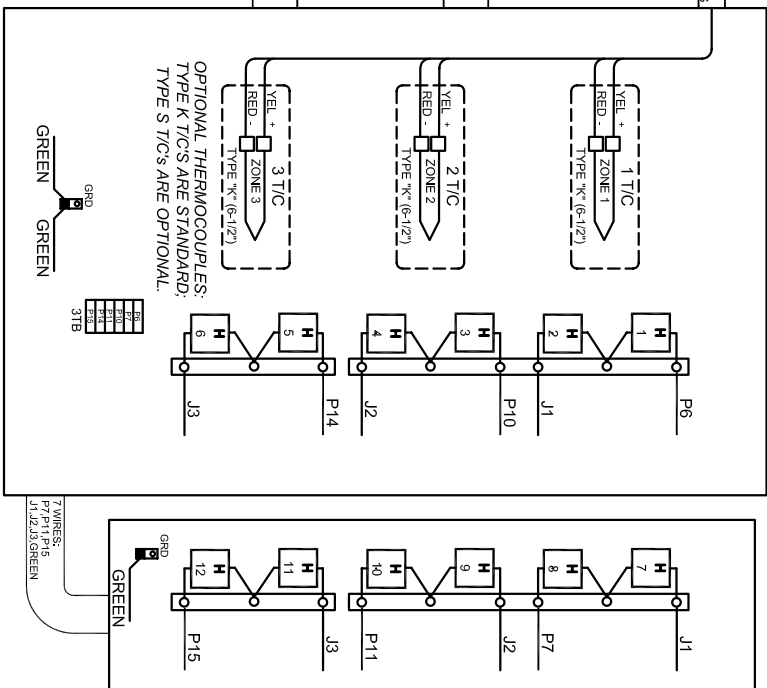
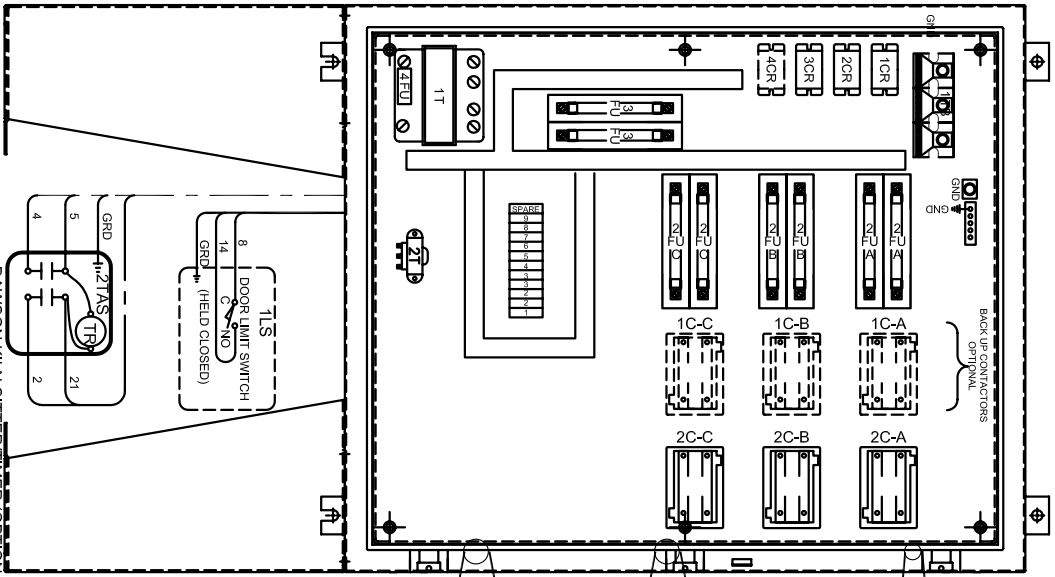
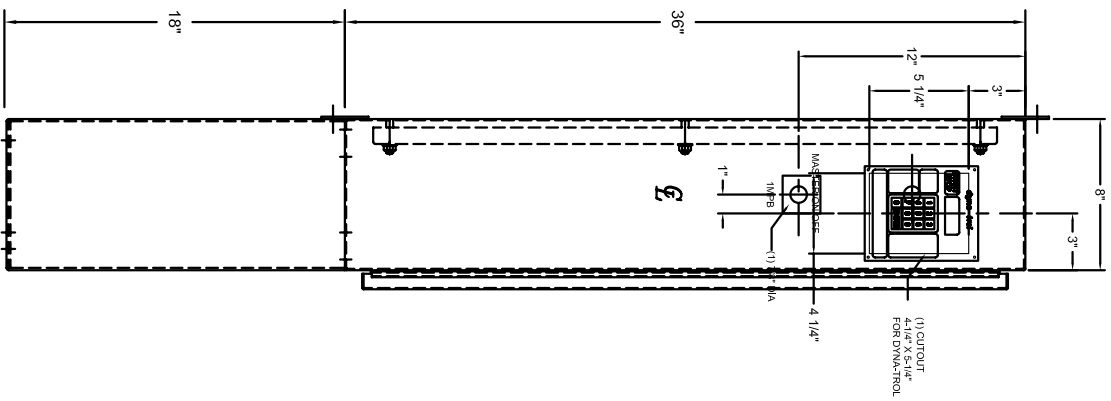


SAFETY SWITCH BY CUSTOMER
 Connect to 480 Volt, 3 Phase
 50 or 60 Cycles.
SEE POWER REQUIREMENT TABLE

POWER REQUIREMENTS	
VOLTAGE	480/3/60
KW	19
H.P.	N/A
FULL LOAD AMPS	L1 L2 L3 23 23 23



REV.#	DATE	REVISION DESCRIPTION
A		ADDED MET CENTER MARK
B		ADDED MET CENTER MARK
C		ADDED MET CENTER MARK
D		ADDED MET CENTER MARK



- NOTES**
- 1) All electrical feeders & equipment will be supplied & installed by the customer. Meeting requirements set by the local & national electrical code standards. L & L recommends any such installation be approved by a certified electrical inspector.
 - 2) For Kilns not equipped with a fused safety disconnect switch, L & L recommends the customer to install such equipment within 6 feet of operating furnace.
 - 3) Industrial & commercial applications may require the installation of a LOCKOUT/TAGOUT device to meet safety & maintenance requirements.
 - 6) Wire gauge and insulation of Power Wires and Control Circuit Wires are as marked.
 - 7) Power Wire Color is Black, and wires are numbered as marked.
 - 8) Control Circuit Wires are numbered as marked, and colors are:
 RED = 1, 3, 6, 8, 11, 13, 15, 17.
 BLACK = 2, 14, 16, 18, 19.
 WHITE = 7, 12.
 GREEN = GROUNDING AND BONDING WIRES.

L & L SPECIAL FURNACE CO., INC.
 20 EAST 10th ST. ST. LOUIS, MO 63102



DAWSON KILN SITTER/TIMER (OPTIONAL)



REV.	DATE	DESCRIPTION
1		ISSUED
2		REVISION
3		REVISION
4		REVISION
5		REVISION
6		REVISION
7		REVISION