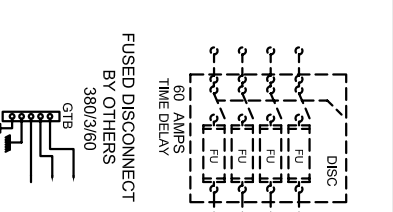
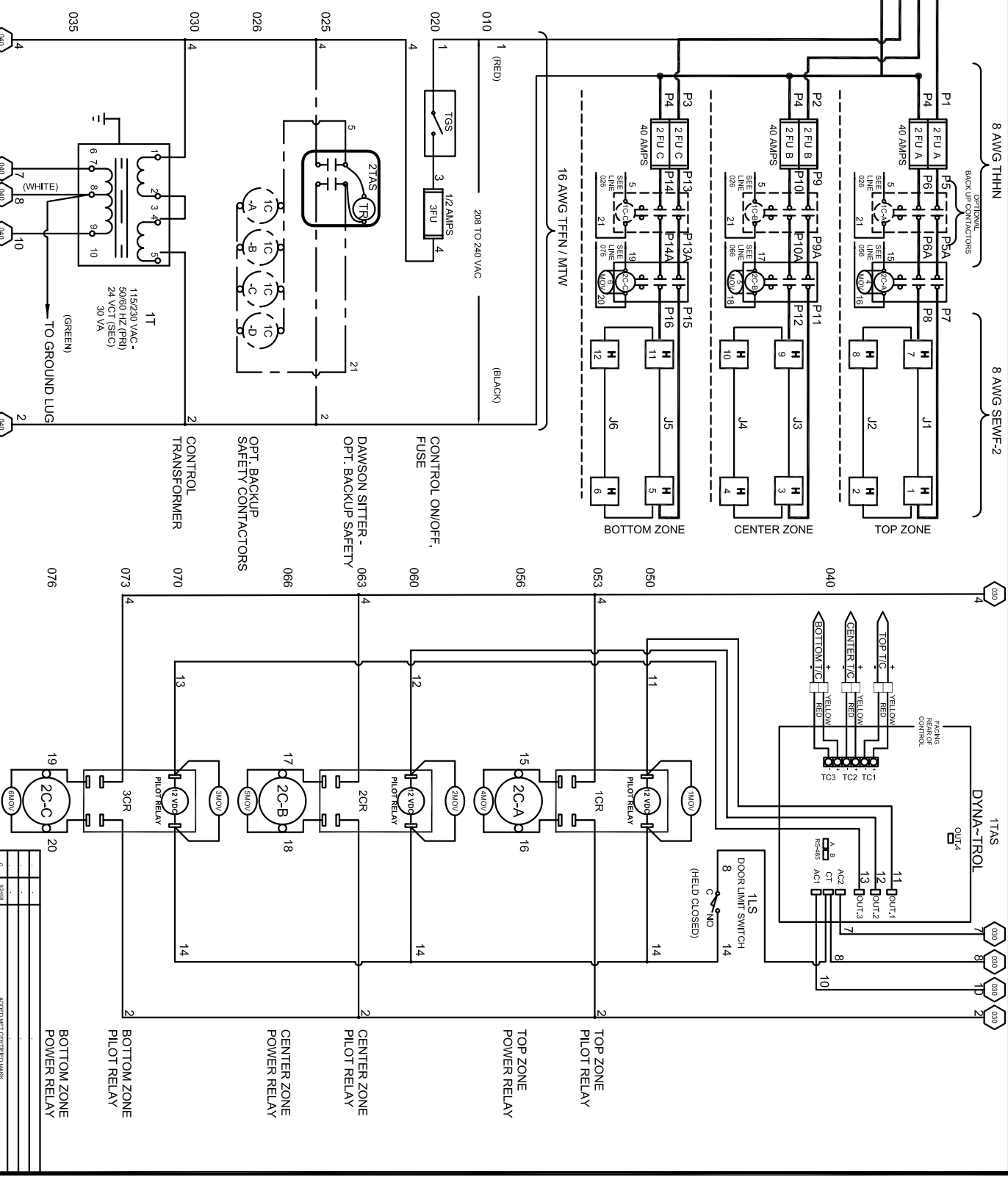


POWER REQUIREMENTS	
VOLTAGE	380 / 3 / 60
KW	19
H.P.	N/A
FULL LOAD AMPS	L1 12 L2 1 L3 29

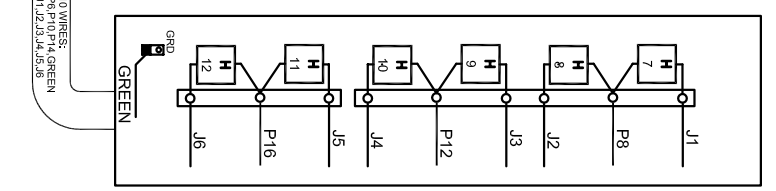
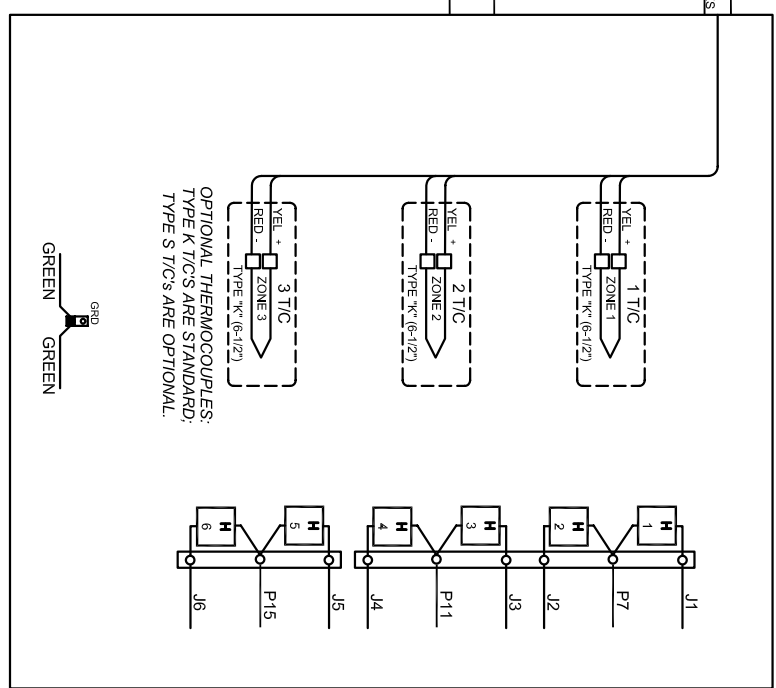
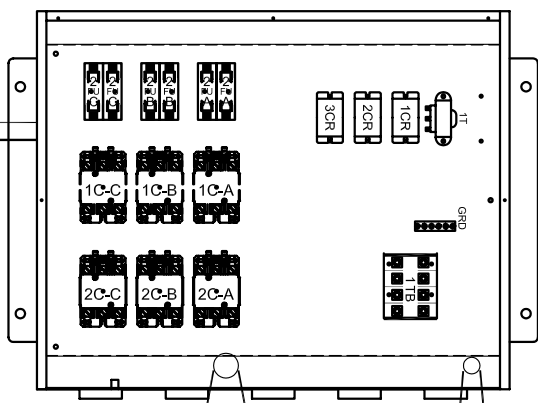
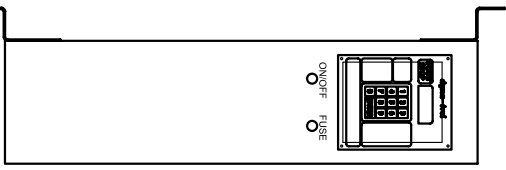
SAFETY SWITCH BY CUSTOMER
 Connected to 380 Volt, 3 Phase
 50 or 60 Cycles.
 SEE POWER REQUIREMENT TABLE



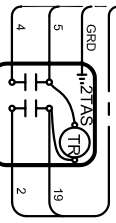
DRAWING NO. 350572-52 SHEET OF 1/2 REV 0 L & L SPECIAL FINANCE CO. INC. TITLE MODEL EL 2436 WIRING DIAGRAM 380 Vac/3/60 - DYNA-TROL SCALE 1 = 10 DATE 01/11/06 DRAWN BY DAC FILE NAME L:\N\EL\EL2436\350572-52.dwg MADE FROM 350572-52.dwg



REV #	DATE	APPROVED BY	REVISION DESCRIPTION
0			



UL 499



DAWSON KILN SITTER/TIMER (OPTIONAL)

OPTIONAL THERMOCOUPLES:
TYPE K T/C'S ARE STANDARD.
TYPE S T/C'S ARE OPTIONAL.

- NOTES**
- 1) All electrical feeders & equipment will be supplied & installed by the customer. Meeting requirements set by the local & national electrical code standards. L & L recommends any such installation be approved by a certified electrical inspector.
 - 2) For Kilns not equipped with a fused safety disconnect switch, L & L recommends the customer to install such equipment within 6 feet of operating furnace.
 - 3) Industrial & commercial applications may require the installation of a LOCKOUT/TAGOUT device to meet safety & maintenance requirements.
 - 6) Wire gauge and insulation of Power Wires and Control Circuit Wires are as marked.
 - 7) Power Wire Color is Black, and wires are numbered as marked.
 - 8) Control Circuit Wires are numbered as marked, and colors are:
RED = 1, 3, 6, 8, 11, 13, 15, 17.
BLACK = 2, 14, 16, 18, 19.
WHITE = 7, 12.
GREEN = GROUNDING AND BONDING WIRES.

DRAWING NO.	SHEET OF	REV.	TITLE	SCALE	DATE	DRAWN BY	FILE NAME	MADE FROM
350572-52	2/2	0	L & L SPECIAL FURNACE CO. INC.	1 = 10	01/11/06	DLC	L\A\EL\EL2436\350572-52.dwg	350572-52.dwg

L & L SPECIAL FURNACE CO. INC.
20 WEST 10TH ST. SUITE 210
MILWAUKEE, WI 53233

MODEL B 2436 WIRING DIAGRAM
380 VAC/3/60 - DYNA-TROL

REV.#	DATE	REVISION DESCRIPTION
0		ASSEMBLY DRAWING
1		
2		
3		
4		