

**SINGLE PHASE MODELS:**

MODELS J230 & JD230	
VOLTAGE	208 / 1 / 50-60
KW	9.14
FULL LOAD AMPS	L1   L2   L3 44.0   44.0   X
POWER SUPPLY	FUSE   WIRE 60A   6 AWG
ELEMENTS (E-J-2300/20)	QTY   OHMS 6   28.4
VOLTAGE	220 / 1 / 50-60
KW	9.68
FULL LOAD AMPS	L1   L2   L3 44.0   44.0   X
POWER SUPPLY	FUSE   WIRE 60A   6 AWG
ELEMENTS (E-J-2300/40)	QTY   OHMS 6   30.0
VOLTAGE	240 / 1 / 50-60
KW	10.55
FULL LOAD AMPS	L1   L2   L3 44.0   44.0   X
POWER SUPPLY	FUSE   WIRE 60A   6 AWG
ELEMENTS (E-J-2300/30)	QTY   OHMS 6   32.7

**THREE PHASE MODELS:**

MODELS J230 & JD230	
VOLTAGE	208 / 3 / 50-60
KW	9.14
FULL LOAD AMPS	L1   L2   L3 25.4   25.4   25.4
POWER SUPPLY	FUSE   WIRE 40A   8 AWG
ELEMENTS (E-J-2300/20)	QTY   OHMS 6   28.4
VOLTAGE	220 / 3 / 50-60
KW	9.68
FULL LOAD AMPS	L1   L2   L3 25.4   25.4   25.4
POWER SUPPLY	FUSE   WIRE 40A   8 AWG
ELEMENTS (E-J-2300/40)	QTY   OHMS 6   30.0
VOLTAGE	240 / 3 / 50-60
KW	10.55
FULL LOAD AMPS	L1   L2   L3 25.4   25.4   25.4
POWER SUPPLY	FUSE   WIRE 40A   8 AWG
ELEMENTS (E-J-2300/30)	QTY   OHMS 6   32.7

**1 PHASE CONTROL PANELS:**

MODEL	(AUTO/MANUAL)	WIRING DIAGRAM
J230	(MANUAL)	K262-101
JD230	(AUTO)	K262-151

**3 PHASE CONTROL PANELS:**

MODEL	(AUTO/MANUAL)	WIRING DIAGRAM
J230	(MANUAL)	K262-102
JD230	(AUTO)	K262-152



**SEE CONTROL PANEL WIRING DIAGRAM FOR WIRING CONNECTIONS TO KILN ZONE RECEPTACLES**

**NOTES:**

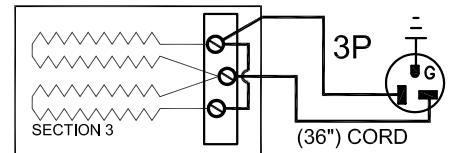
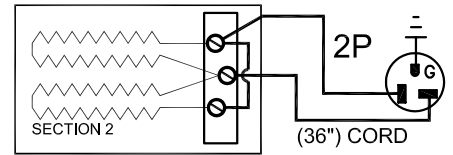
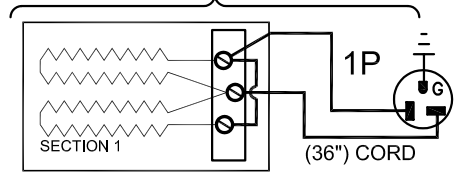
Industrial & commercial applications may require the installation of a LOCKOUT/TAGOUT device to prevent the Kiln from operating during maintenance.

This Kiln is recommended to be wired & connected to an approved U. L. & NEC configured disconnect switch and properly fused according to the KW load specification listed on the Kiln Nameplate. L&L Kiln Mfg., Inc., also recommends fuses rather than circuit breakers to prevent nuisance tripping.

**ELECTRICAL PARTS LIST**

SYMBOL	QTY	DESCRIPTION	CUSTOMER PART NO.
P	3	36" PLUGS NEMA 6-20P	L-J-JC36/00
.	.	.	.
.	.	.	.

**KILN ASSEMBLY**



SECTIONS CONTROLLED BY EACH OF THE 'DYNA-TROL' OUTPUTS:  
OUTPUT #1 (TOP)  
OUTPUT #2 (CENTER)  
OUTPUT #3 (BOTTOM)

Output Numbers refer to Dyna-Trol Outputs on Automatic Kilns only.



**CAUTION: DO NOT PLUG KILN SECTIONS DIRECTLY TO LINE VOLTAGE**

REV#	DATE	REVISION DESCRIPTION
A	10/23/09	REPLACED UL MARK WITH MET CERTIFIED MARK & ADDED NEW LOGO
0	9/12/02	MISC CORRECTIONS FOR RELEASE

**L&L Kilns**  
hotkilns.com  
505 SHARPTOWN ROAD  
SWEDESBORO, NJ 08085  
PHONE: (856) 294-0077  
FAX: (856) 294-0070

TITLE: **JUPITER KILN WIRING DIAGRAM**  
**MODELS J230 and JD230**  
**1 or 3 PHASE KILN ASSEMBLY**  
**3 SECTIONS, No Power Bottom**

DRAWN BY	G.D.L.	REV. CODE	A	DRAWING NO.	K037-110
DATE	10/20/99	SCALE	1 = 8		
CHK	G.D.L.	APP			
JOB NO.		SER NO.		SHEET NO.	1 OF 1
FILE NAME	L:\E\1111KILN\WIRING\KLN	MADE FROM			USERIES\K035-100.dwg
	IK037-110.DWG				