

SINGLE PHASE MODELS:

MODELS J23 & JD23	
VOLTAGE	208 / 1 / 50-60
KW	6.1
FULL LOAD AMPS	L1 L2 L3 29.3 29.3 X
POWER SUPPLY	FUSE WIRE 40A 8 AWG
ELEMENTS (E-J-2300/20)	QTY OHMS 4 28.4
VOLTAGE	220 / 1 / 50-60
KW	6.45
FULL LOAD AMPS	L1 L2 L3 29.3 29.3 X
POWER SUPPLY	FUSE WIRE 40A 8 AWG
ELEMENTS (E-J-2300/40)	QTY OHMS 4 30.0
VOLTAGE	240 / 1 / 50-60
KW	7.04
FULL LOAD AMPS	L1 L2 L3 29.3 29.3 X
POWER SUPPLY	FUSE WIRE 40A 8AWG
ELEMENTS (E-J-2300/30)	QTY OHMS 4 32.7

THREE PHASE MODELS:

MODELS J23 & JD23	
VOLTAGE	208 / 3 / 50-60
KW	6.1
FULL LOAD AMPS	L1 L2 L3 14.7 25.4 14.7
POWER SUPPLY	FUSE WIRE 40A 8 AWG
ELEMENTS (E-J-2300/20)	QTY OHMS 4 28.4
VOLTAGE	220 / 3 / 50-60
KW	6.5
FULL LOAD AMPS	L1 L2 L3 14.7 25.4 14.7
POWER SUPPLY	FUSE WIRE 40A 8AWG
ELEMENTS (E-J-2300/40)	QTY OHMS 4 30.0
VOLTAGE	240 / 3 / 50-60
KW	7.0
FULL LOAD AMPS	L1 L2 L3 14.7 25.4 14.7
POWER SUPPLY	FUSE WIRE 40A 8 AWG
ELEMENTS (E-J-2300/30)	QTY OHMS 4 32.7

1 PHASE CONTROL PANELS:

MODEL	(AUTO/MANUAL)	WIRING DIAGRAM
J23	(MANUAL)	K262-101
JD23	(AUTO)	K262-151

3 PHASE CONTROL PANELS:

MODEL	(AUTO/MANUAL)	WIRING DIAGRAM
J23	(MANUAL)	K262-102
JD23	(AUTO)	K262-152



SEE CONTROL PANEL WIRING DIAGRAM FOR WIRING CONNECTIONS TO KILN ZONE RECEPTACLES

NOTES:

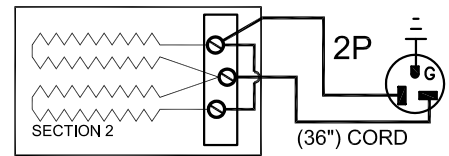
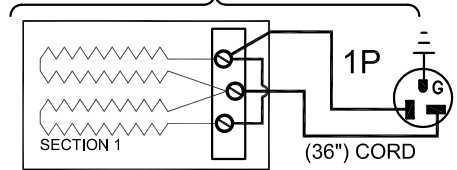
Industrial & commercial applications may require the installation of a LOCKOUT/TAGOUT device to prevent the Kiln from operating during maintenance.

This Kiln is recommended to be wired & connected to an approved U. L. & NEC configured disconnect switch and properly fused according to the KW load specification listed on the Kiln Nameplate. L&L Kiln Mfg., Inc., also recommends fuses rather than circuit breakers to prevent nuisance tripping.

ELECTRICAL PARTS LIST

SYMBOL	QTY	DESCRIPTION	CUSTOMER PART NO.
P	2-3	36" PLUGS NEMA 6-20P	L-J-JC36/00

KILN ASSEMBLY



SECTIONS CONTROLLED BY EACH OF THE 'DYNA-TROL' OUTPUTS:
OUTPUT #1 (TOP)
OUTPUT #2 (BOTTOM)

Output Numbers refer to Dyna-Trol Outputs on Automatic Kilns only.



CAUTION: DO NOT PLUG KILN SECTIONS DIRECTLY TO LINE VOLTAGE

REV#	DATE	REVISION DESCRIPTION
A	10/23/09	REPLACED UL MARK WITH MET CERTIFIED MARK & ADDED NEW LOGO
0	9/5/02	MISC CORRECTIONS FOR RELEASE / DISCONTINUED HAND-HELD

L&L Kilns
hotkilns.com
505 SHARPTOWN ROAD
SWEDESBORO, NJ 08085
PHONE: (856) 294-0077
FAX: (856) 294-0070

TITLE **JUPITER KILN WIRING DIAGRAM**
MODELS J23 and JD23
1 or 3 PHASE KILN ASSEMBLY
2 SECTIONS, No Power Bottom

DRAWN BY G.D.L.	REV. CODE A	DRAWING NO. K035-110
DATE 10/1/99	SCALE 1 = 8	
CHK G.D.L.	APP	
JOB NO	SER NO	SHEET NO. OF
FILE NAME L:\EVLKILN\WIRING\KLN	MADE FROM	USERIES\K035-100.dwg