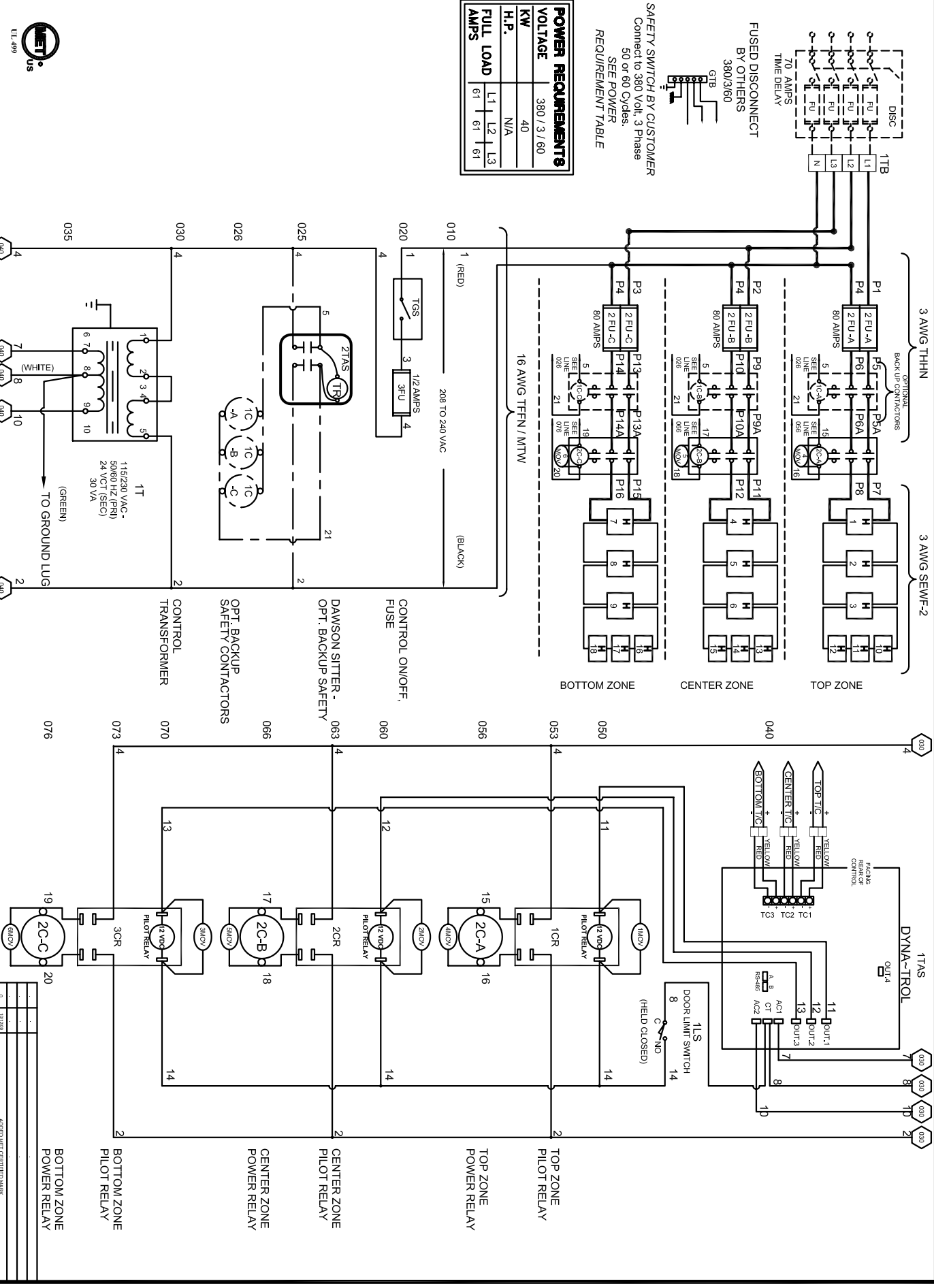
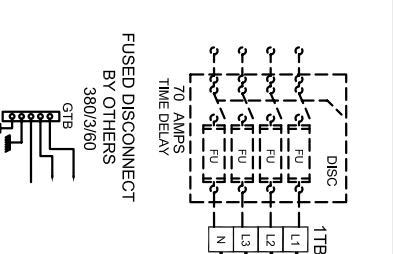


POWER REQUIREMENTS			
VOLTAGE	380 / 3 / 60		
KW	40		
H.P.	N/A		
FULL LOAD AMPS	L1	L2	L3
	61	61	61

SAFETY SWITCH BY CUSTOMER
 Connected to 380 Volt, 3 Phase
 50 or 60 Cycles.
 SEE POWER
 REQUIREMENT TABLE



REV.#	DATE	APPROVED	REVISION DESCRIPTION
0			

