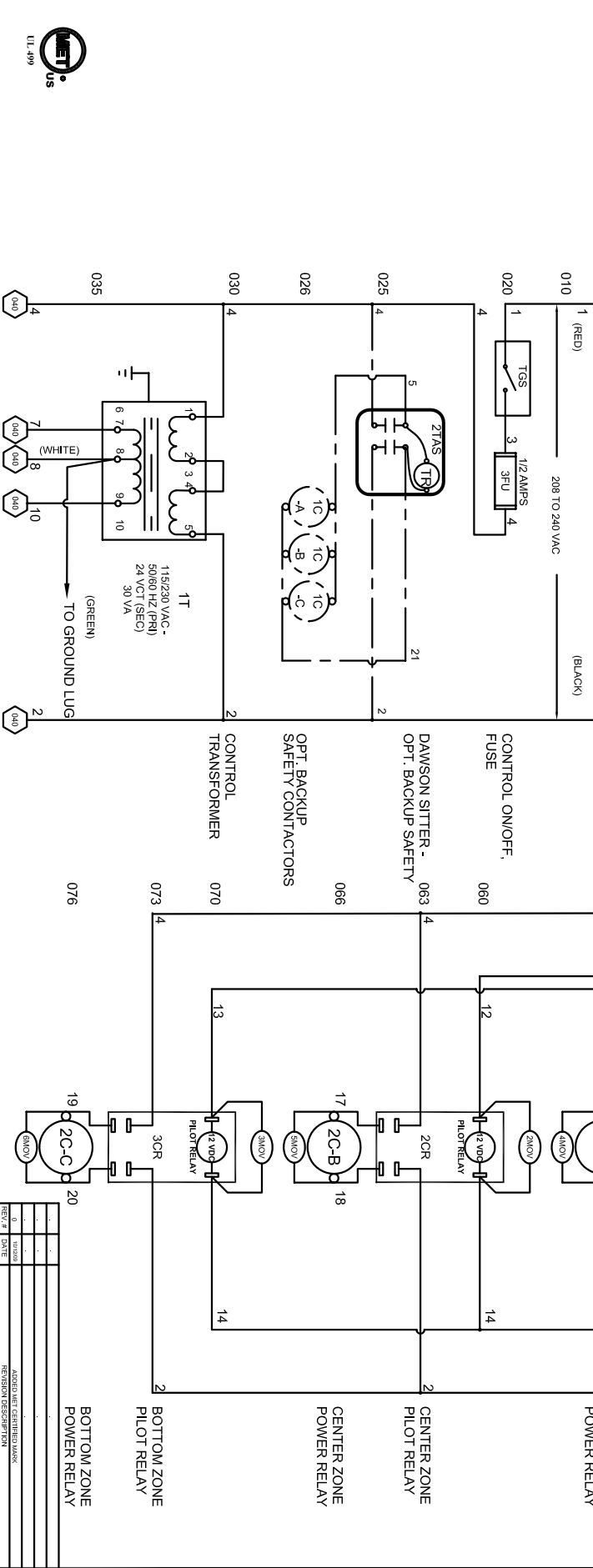
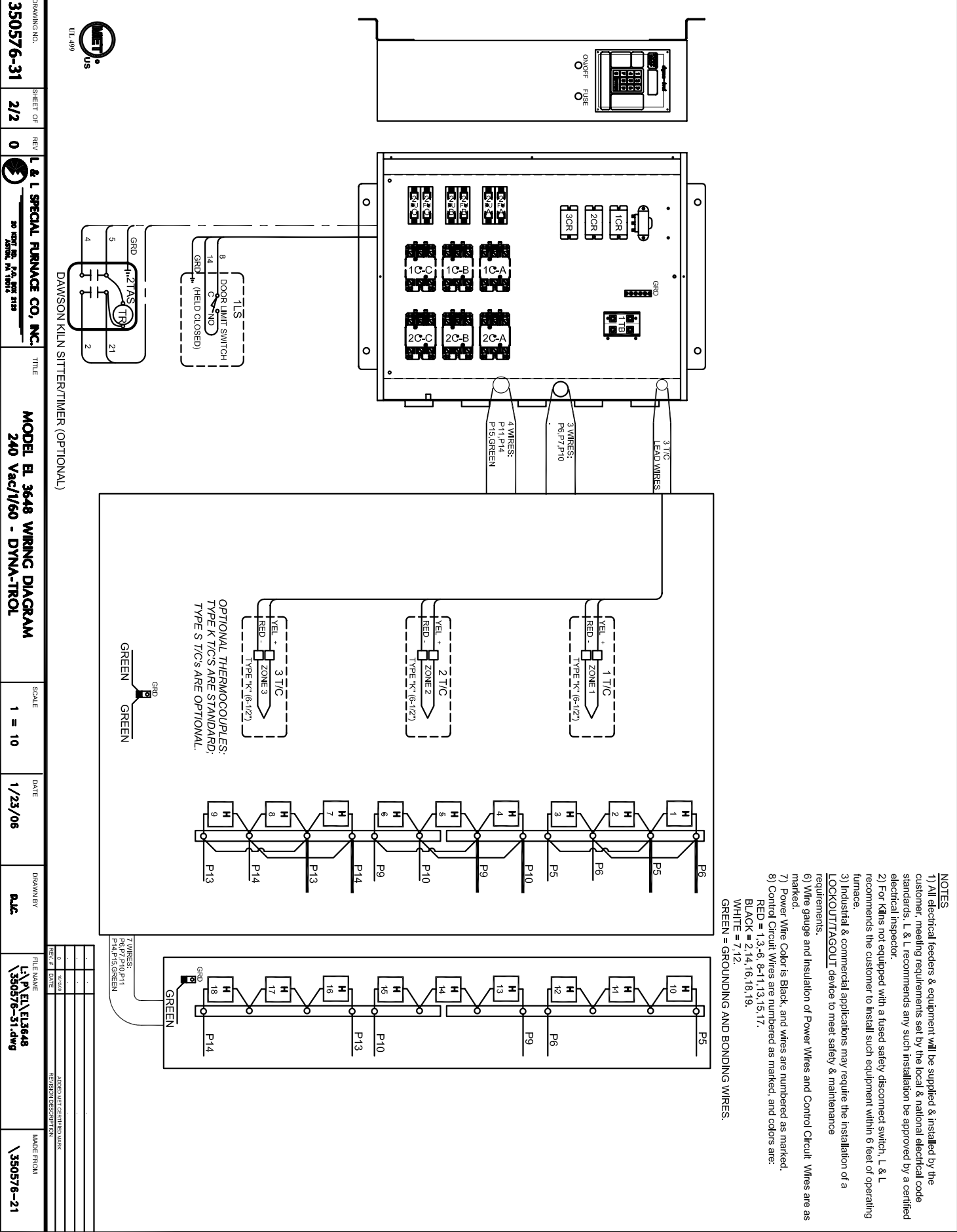


SAFETY SWITCH BY CUSTOMER
Connect to 240 Volt, 1 Phase
50 or 60 Cycles.
SEE POWER
REQUIREMENT TABLE

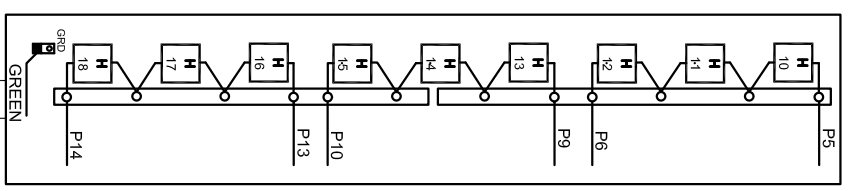
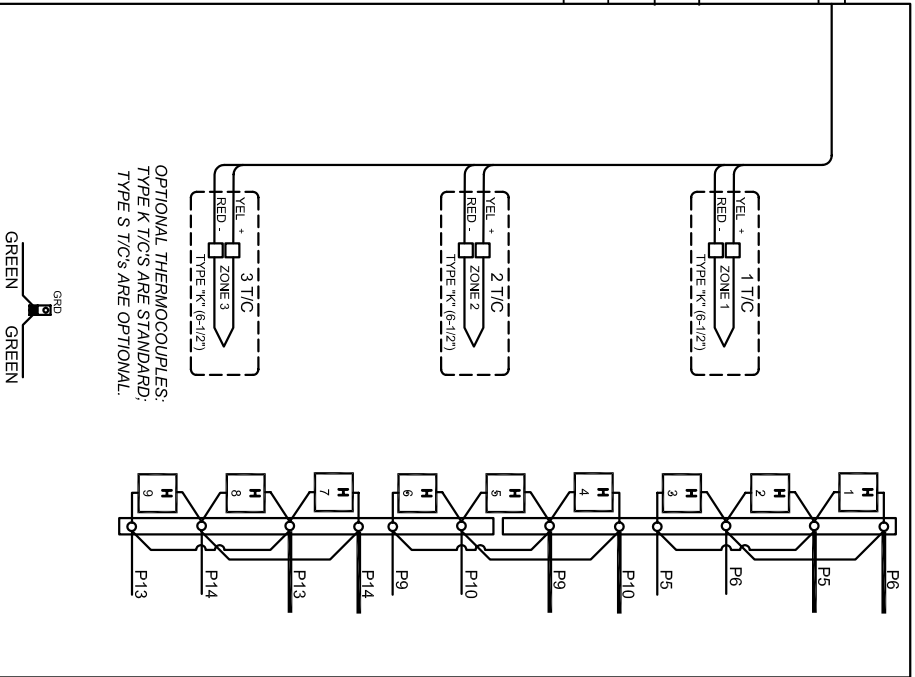
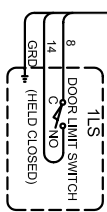
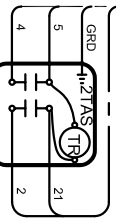
POWER REQUIREMENTS	
VOLTAGE	240 / 1 / 60
KW	40
H.P.	N/A
FULL LOAD AMPS	L1 167 L2 167 L3 167



DRAWING NO. **350576-31** SHEET OF **1/2** REV. **0** **L & L SPECIAL FINANCE CO. INC.** TITLE **MODEL B, 3648 WIRING DIAGRAM 240 Vac/1/60 - DYNA-TROL** SCALE **1 = 10** DATE **1/23/06** DRAWN BY **RLC** FILE NAME **L:\P\EL\3648\350576-31.dwg** MADE FROM **\350576-21**



- NOTES**
- 1) All electrical feeders & equipment will be supplied & installed by the customer. Meeting requirements set by the local & national electrical code standards. L & L recommends any such installation be approved by a certified electrical inspector.
 - 2) For Kilns not equipped with a fused safety disconnect switch, L & L recommends the customer to install such equipment within 6 feet of operating furnace.
 - 3) Industrial & commercial applications may require the installation of a LOCKOUT/TAGOUT device to meet safety & maintenance requirements.
 - 4) Wire gauge and insulation of Power Wires and Control Circuit Wires are as marked.
 - 5) Power Wire Color is Black, and wires are numbered as marked.
 - 6) Control Circuit Wires are numbered as marked, and colors are:
RED = 1, 3, 6, 8, 11, 13, 15, 17.
BLACK = 2, 14, 16, 18, 19.
WHITE = 7, 12.
GREEN = GROUNDING AND BONDING WIRES.



3 WIRES:
P6, P7, P10
P14, P15, GREEN

4 WIRES:
P11, P14
P15, GREEN

3 T/Cs:
P13, P14, P15, GREEN

DAWSON KILN SITTER/TIMER (OPTIONAL)

REV.#	DATE	DESCRIPTION
0		ADDED MET CERTIFICATION