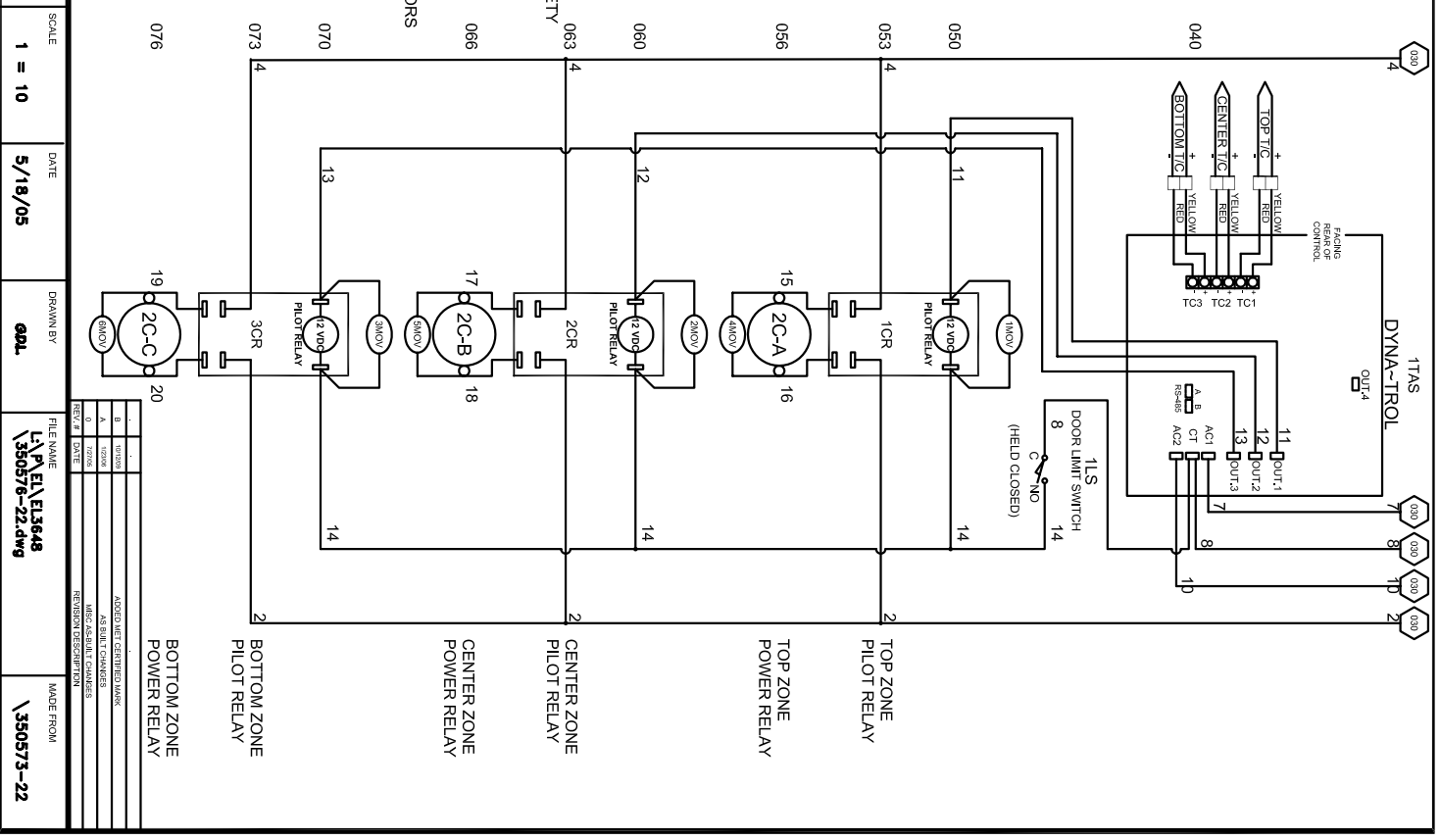
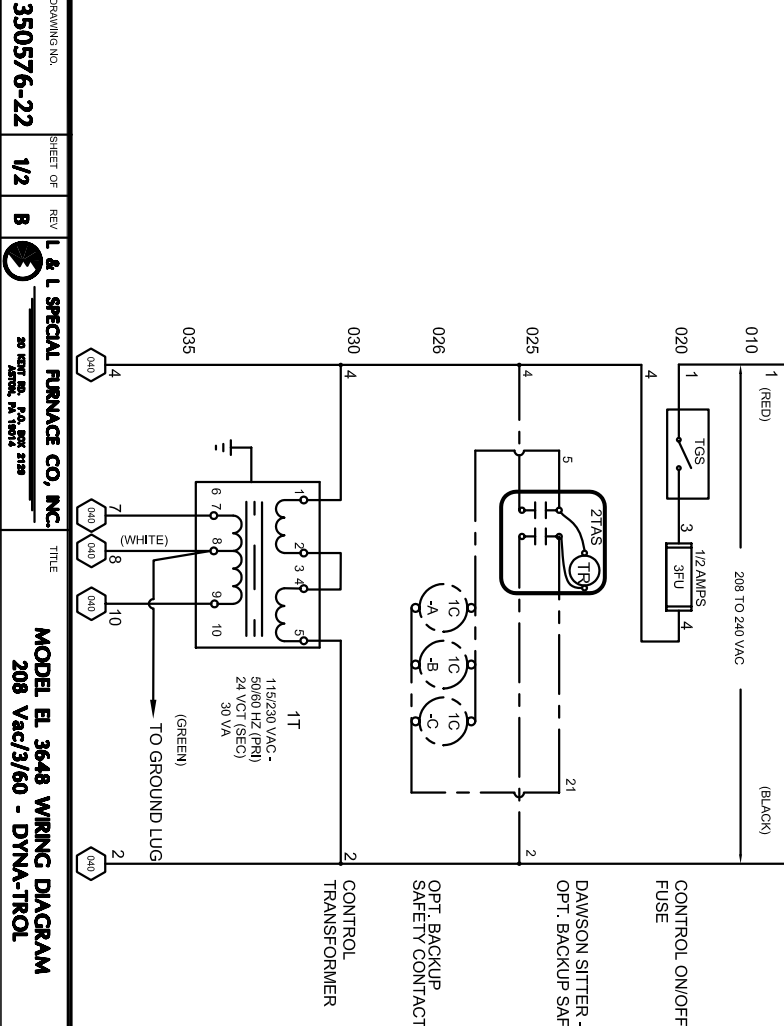
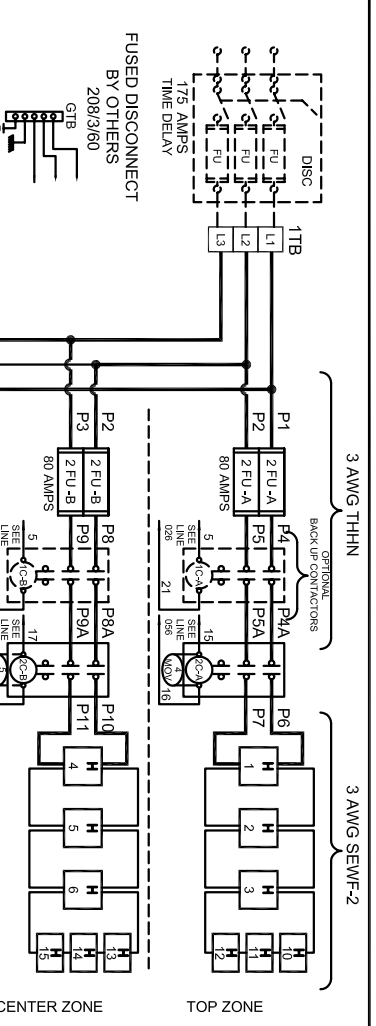
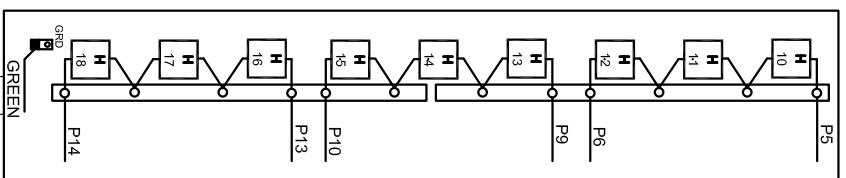
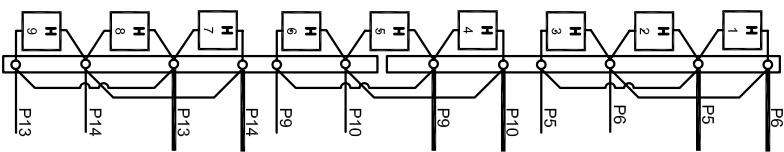
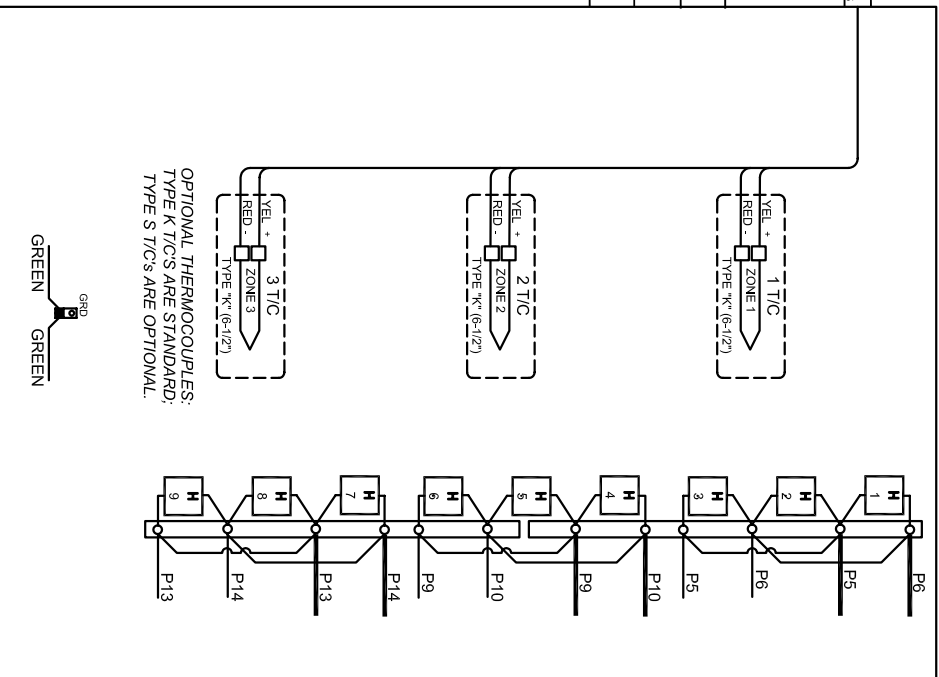
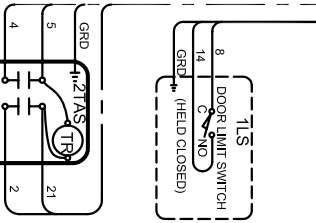
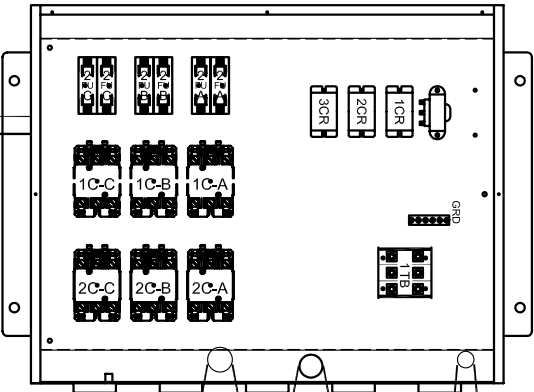
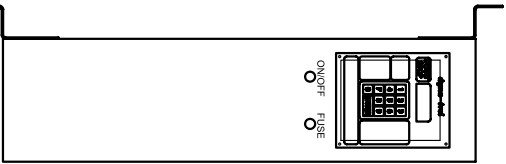


POWER REQUIREMENTS			
VOLTAGE	208 / 3 / 60		
H.P.	40		
FULL LOAD AMPS	L1	L2	L3
	112	112	112

SAFETY SWITCH BY CUSTOMER
 Connect to 208 Volt, 3 Phase
 50 or 60 Cycles.
SEE POWER REQUIREMENT TABLE



REV. #	DATE	REVISION DESCRIPTION
1		ISSUED
2		REVISED
3		REVISED
4		REVISED
5		REVISED
6		REVISED
7		REVISED
8		REVISED
9		REVISED
10		REVISED



- NOTES**
- 1) All electrical feeders & equipment will be supplied & installed by the customer. Meeting requirements set by the local & national electrical code standards. L & L recommends any such installation be approved by a certified electrical inspector.
 - 2) For Kilns not equipped with a fused safety disconnect switch, L & L recommends the customer to install such equipment within 6 feet of operating furnace.
 - 3) Industrial & commercial applications may require the installation of a LOCKOUT/TAGOUT device to meet safety & maintenance requirements.
 - 4) Wire gauge and insulation of Power Wires and Control Circuit Wires are as marked.
 - 5) Power Wire Color is Black, and wires are numbered as marked.
 - 6) Control Circuit Wires are numbered as marked, and colors are:
 RED = 1, 3, 6, 8, 1, 13, 15, 17.
 BLACK = 2, 14, 16, 18, 19.
 WHITE = 7, 12.
 GREEN = GROUNDING AND BONDING WIRES.



UL 499

DAWSON KILN SITTER/TIMER (OPTIONAL)

REV.#	DATE	REVISION DESCRIPTION
0		ISSUE
1		REVISED
2		REVISED
3		REVISED
4		REVISED
5		REVISED
6		REVISED
7		REVISED
8		REVISED
9		REVISED