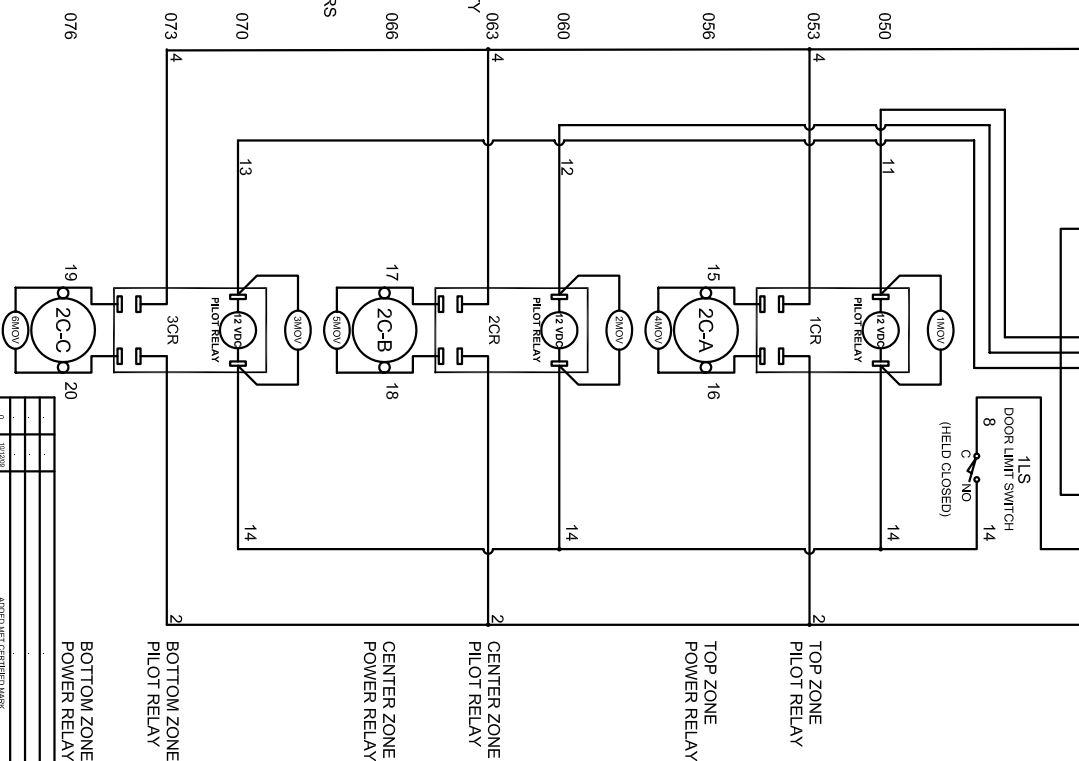
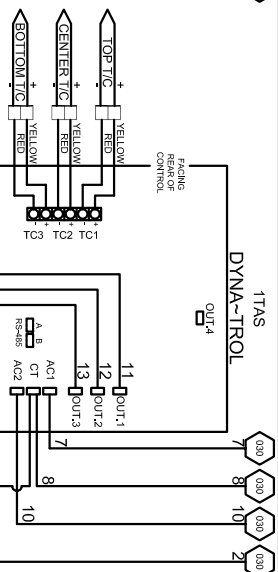
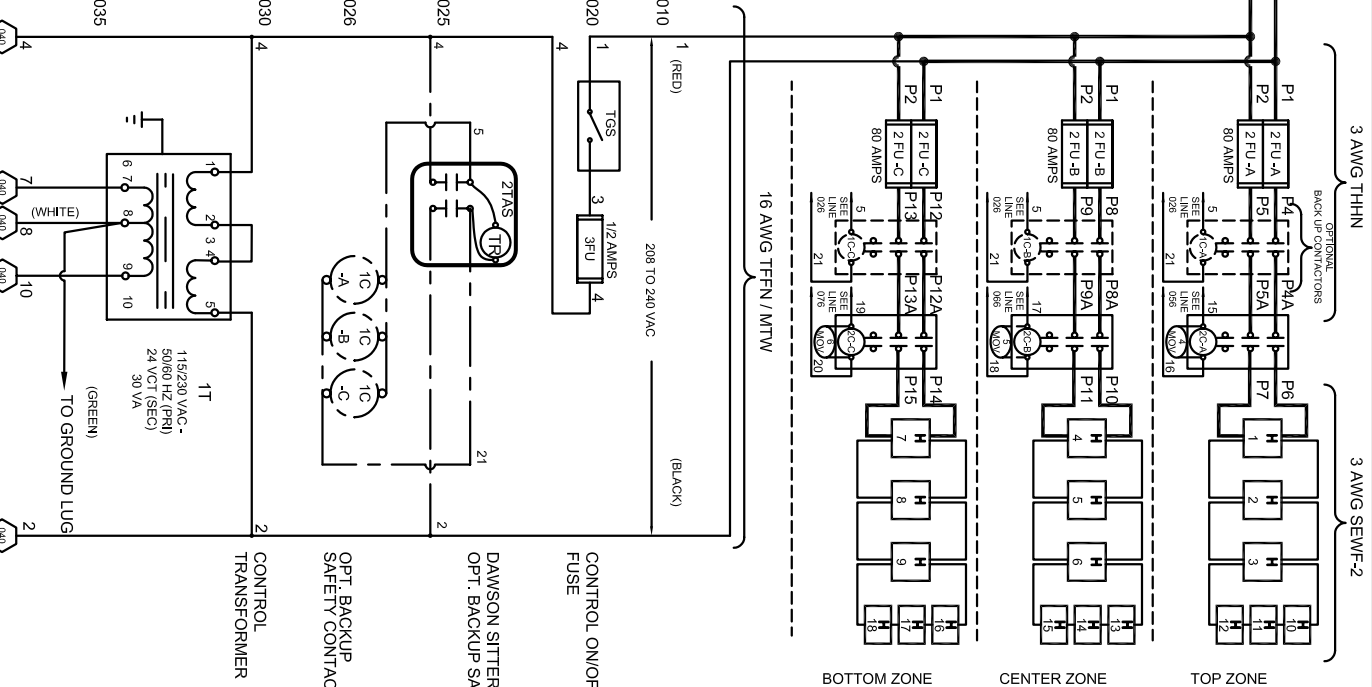
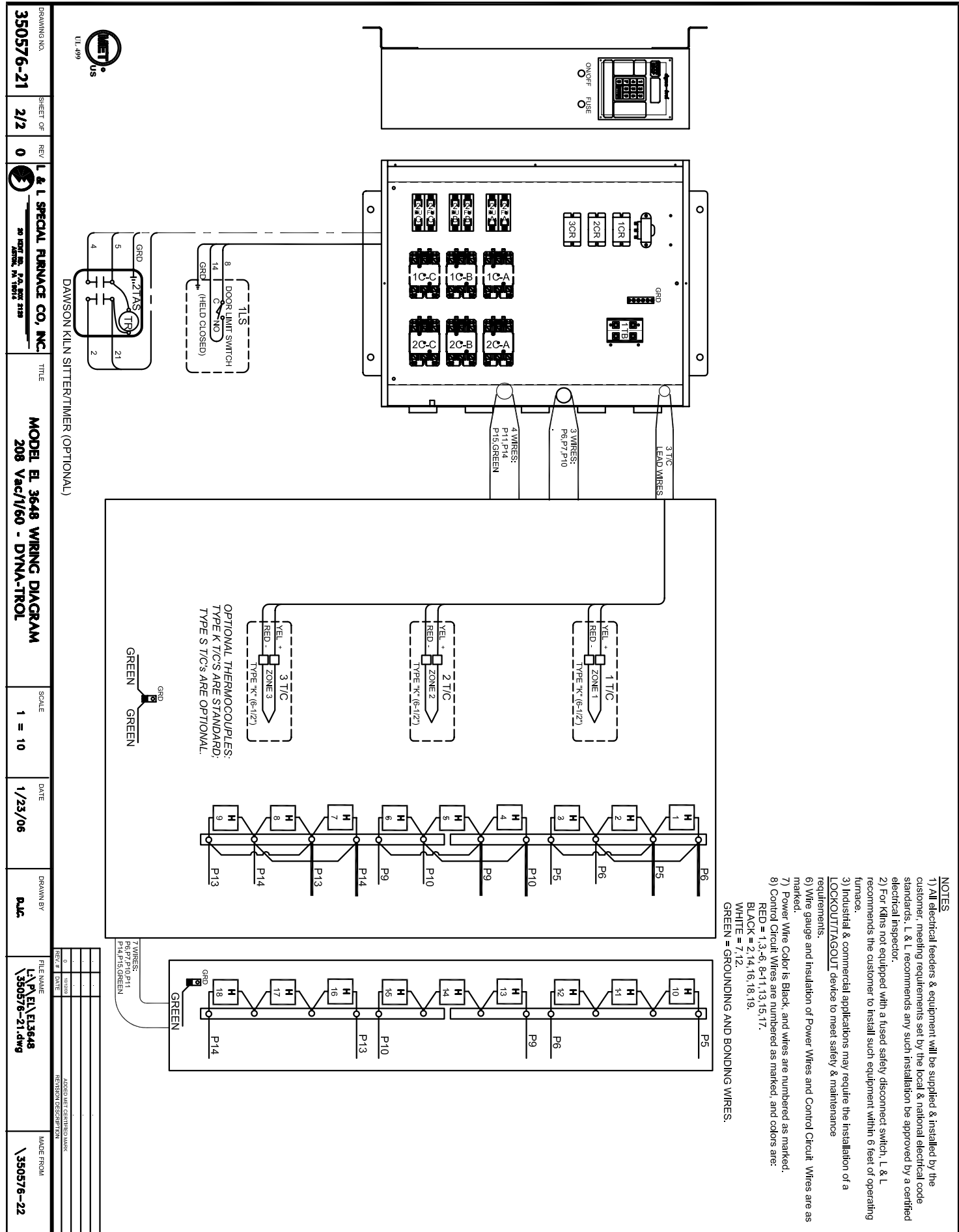


POWER REQUIREMENTS			
VOLTAGE	208 / 1 / 60		
KW	40		
H.P.	N/A		
FULL LOAD AMPS	L1 193	L2 193	L3 193



UL 499

REV #	DATE	DESCRIPTION
0		ADDED MET CERTIFICATION
1		REVISION DESCRIPTION



- NOTES**
- 1) All electrical feeders & equipment will be supplied & installed by the customer. Meeting requirements set by the local & national electrical code standards. L & L recommends any such installation be approved by a certified electrical inspector.
 - 2) For Kilns not equipped with a fused safety disconnect switch, L & L recommends the customer to install such equipment within 6 feet of operating furnace.
 - 3) Industrial & commercial applications may require the installation of a LOCKOUT/TAGOUT device to meet safety & maintenance requirements.
 - 6) Wire gauge and insulation of Power Wires and Control Circuit Wires are as marked.
 - 7) Power Wire Color is Black, and wires are numbered as marked.
 - 8) Control Circuit Wires are numbered as marked, and colors are:
 RED = 1, 3, 6, 8, 1, 13, 15, 17.
 BLACK = 2, 14, 16, 18, 19.
 WHITE = 7, 12.
 GREEN = GROUNDING AND BONDING WIRES.

DRAWING NO.	SHEET OF	REV.	L & L SPECIAL FURNACE CO. INC.	TITLE	SCALE	DATE	DRAWN BY	FILE NAME	MADE FROM
350576-21	2/2	0	30 DAY 10% 60 DAY 15% 90 DAY 20% 180 DAY 30% 360 DAY 40%	MODEL B1 3648 WIRING DIAGRAM 208 Vac/1/60 - DYNA-TROL	1 = 10	1/23/06	RLC	L:\P\EL\3648 350576-21.dwg	350576-22



UL 499

DAWSON KILN SITTER/TIMER (OPTIONAL)

OPTIONAL THERMOCOUPLES:
TYPE K T/C'S ARE STANDARD.
TYPE S T/C'S ARE OPTIONAL.

7 WIRES:
P6, P7, P10, P11
P14, P15, GREEN

3 T/C LEAD WIRES

3 WIRES:
P6, P7, P10

4 WIRES:
P11, P14
P15, GREEN

1 T/C ZONE 1
TYPE K (6-1/2")

2 T/C ZONE 2
TYPE K (6-1/2")

3 T/C ZONE 3
TYPE K (6-1/2")

1 S DOOR LIMIT SWITCH
C NO
(HELD CLOSED)

1 21 AS TR

GRD

GREEN

GRD

GREEN

GRD

GREEN

GRD

GREEN

GRD

GREEN

GRD

GREEN

GRD

GREEN

GRD

GREEN

GRD

GREEN

GRD

GREEN

GRD

GREEN

GRD

GREEN

GRD

GREEN

GRD

GREEN

GRD

GREEN

GRD

GREEN

GRD

GREEN

GRD

GREEN

GRD

GREEN

GRD

GREEN

GRD

GREEN

GRD

GREEN

GRD

GREEN

GRD

GREEN

GRD

GREEN

GRD

GREEN

GRD

GREEN

GRD

GREEN

GRD

GREEN

GRD

GREEN

GRD

GREEN

GRD

GREEN

GRD

GREEN

GRD

GREEN

GRD

GREEN

GRD

GREEN

GRD

GREEN

GRD

GREEN

GRD

GREEN

GRD

GREEN