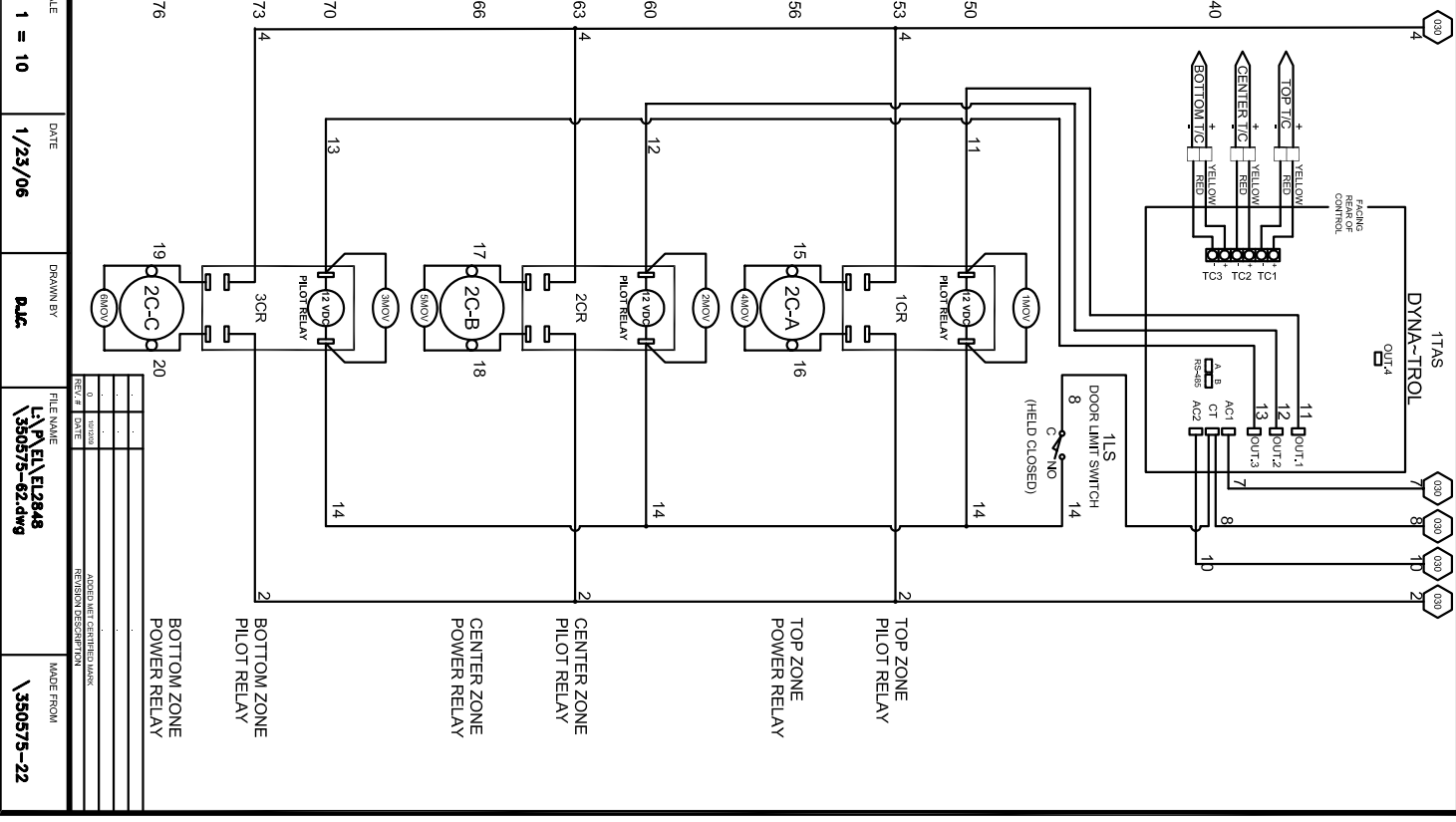
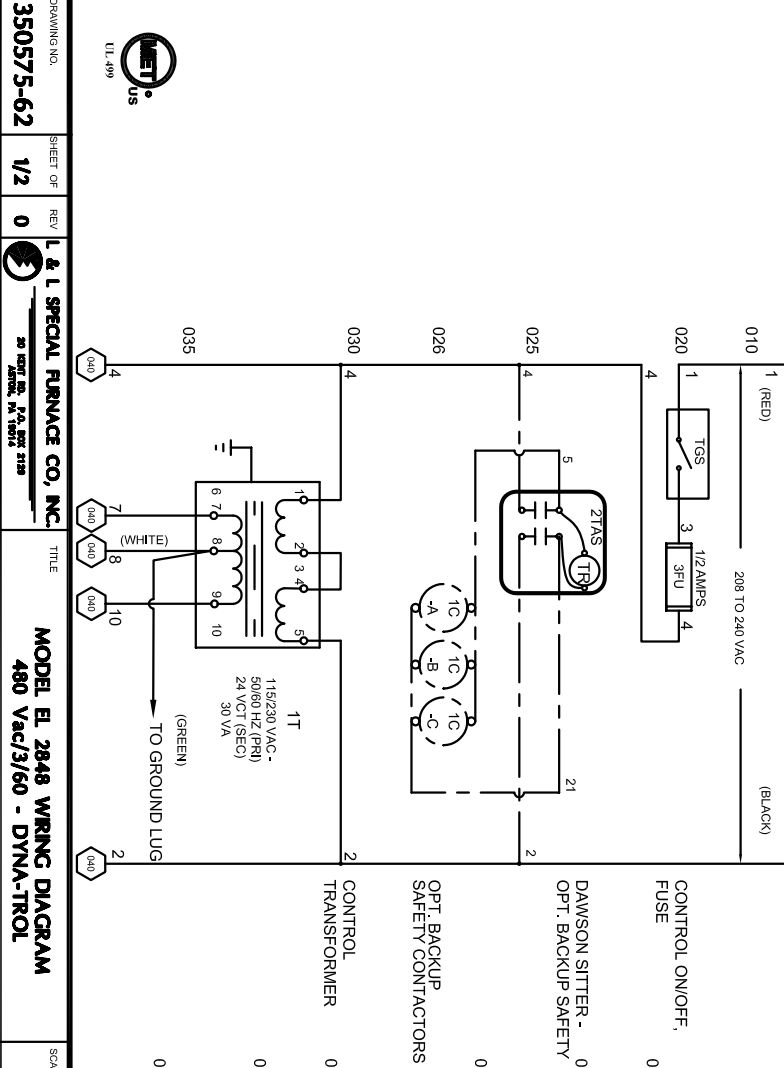
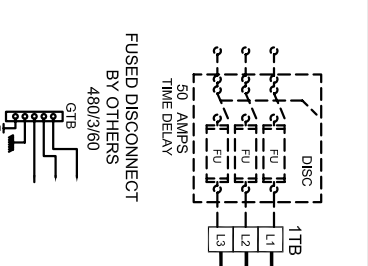


POWER REQUIREMENTS			
VOLTAGE	480 / 3 / 60		
H.P.	27		
FULL LOAD AMPS	L1	L2	L3
	33	33	33

SAFETY SWITCH BY CUSTOMER
 Connect to 480 Volt, 3 Phase
 50 or 60 Cycles.
SEE POWER REQUIREMENT TABLE



010 1 (RED) 208 TO 240 VAC (BLACK)

020 1 1/2 AMPS 3 9FU 4

025 4 5 21

026 4 21

030 4 2

035 4 2

040 4

050 4

053 4

056 4

060 4

063 4

066 4

070 4

073 4

076 4

080 4

083 4

086 4

090 4

093 4

096 4

099 4

100 4

103 4

106 4

109 4

112 4

115 4

118 4

121 4

124 4

127 4

130 4

133 4

136 4

139 4

142 4

145 4

148 4

151 4

154 4

157 4

160 4

163 4

166 4

169 4

172 4

175 4

178 4

181 4

184 4

187 4

190 4

193 4

196 4

199 4

202 4

205 4

208 4

211 4

214 4

217 4

220 4

223 4

226 4

229 4

232 4

235 4

238 4

241 4

244 4

247 4

250 4

253 4

256 4

259 4

262 4

265 4

268 4

271 4

274 4

277 4

280 4

283 4

286 4

289 4

292 4

295 4

298 4

301 4

304 4

307 4

310 4

313 4

316 4

319 4

322 4

325 4

328 4

331 4

334 4

337 4

340 4

343 4

346 4

349 4

352 4

355 4

358 4

361 4

364 4

367 4

370 4

373 4

376 4

379 4

382 4

385 4

388 4

391 4

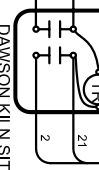
394 4

397 4

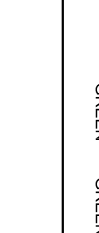
400 4



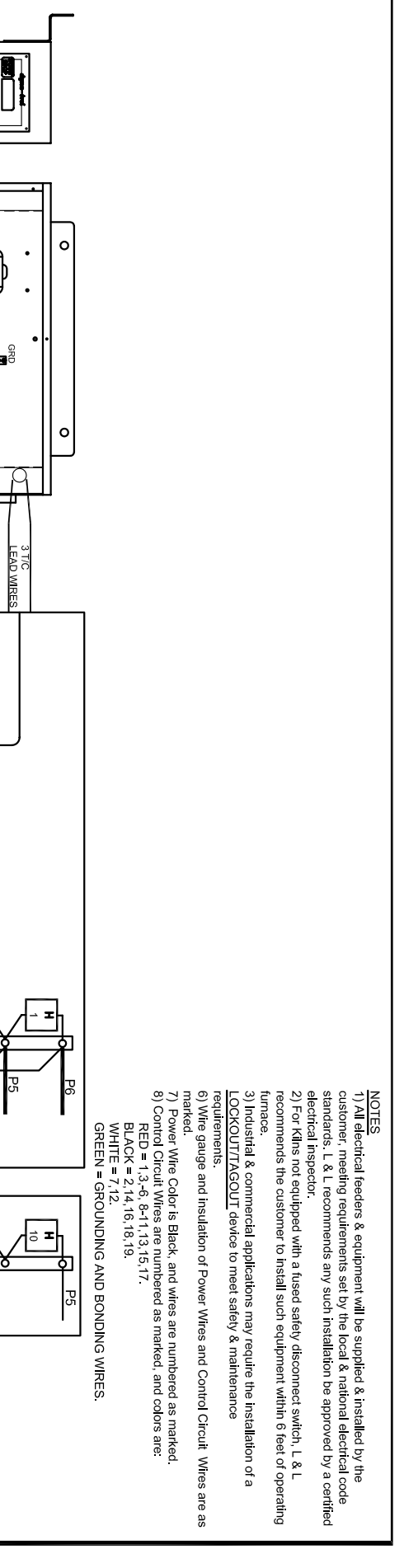
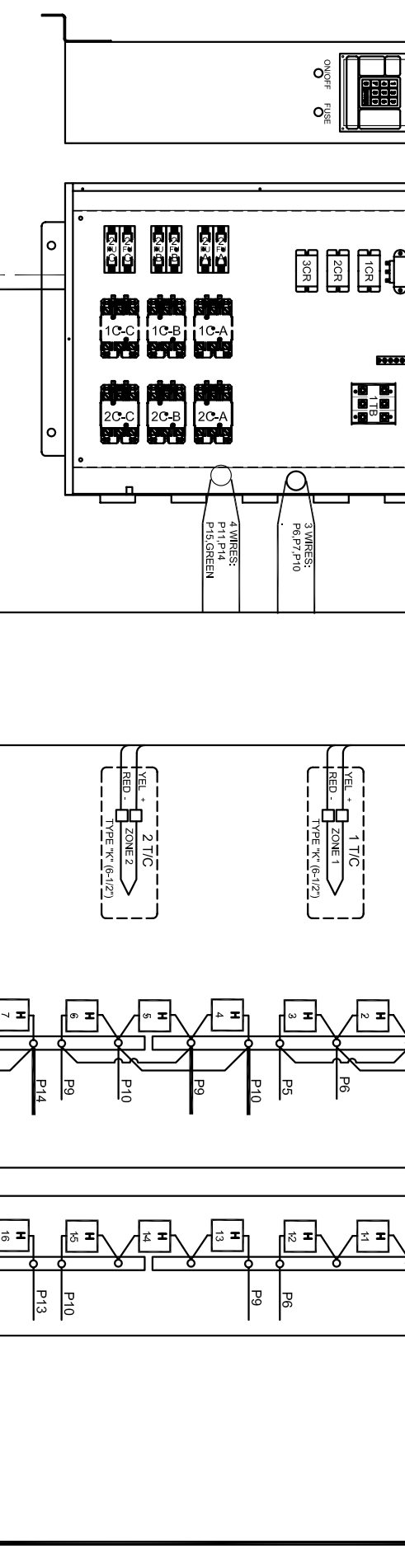
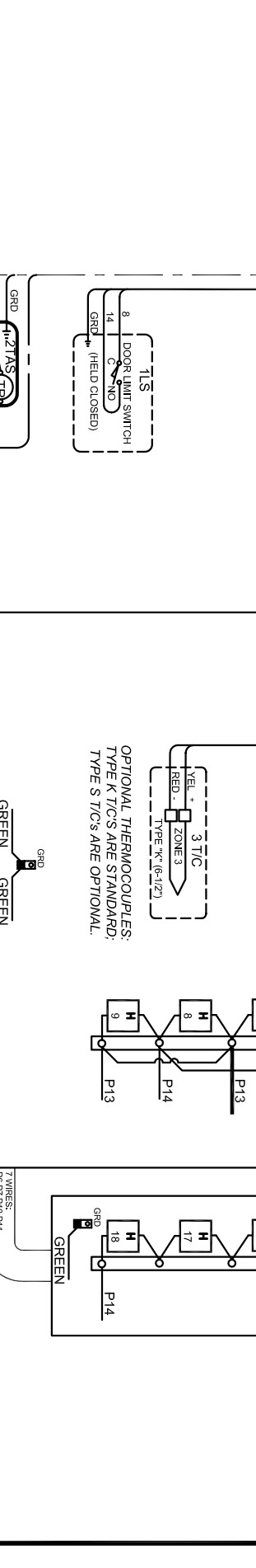
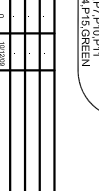
UL 499



DAWSON KILN SITTER/TIMER (OPTIONAL)



OPTIONAL THERMOCOUPLES:
TYPE K T/C'S ARE STANDARD;
TYPE S T/C'S ARE OPTIONAL.



- NOTES**
- 1) All electrical feeders & equipment will be supplied & installed by the customer. Meeting requirements set by the local & national electrical code standards. L & L recommends any such installation be approved by a certified electrical inspector.
 - 2) For Kilns not equipped with a fused safety disconnect switch, L & L recommends the customer to install such equipment within 6 feet of operating furnace.
 - 3) Industrial & commercial applications may require the installation of a LOCKOUT/TAGOUT device to meet safety & maintenance requirements.
 - 6) Wire gauge and insulation of Power Wires and Control Circuit Wires are as marked.
 - 7) Power Wire Color is Black, and wires are numbered as marked.
 - 8) Control Circuit Wires are numbered as marked, and colors are:
RED = 1, 3, 6, 8, 1, 13, 15, 17.
BLACK = 2, 14, 16, 18, 19.
WHITE = 7, 12.
GREEN = GROUNDING AND BONDING WIRES.

DRAWING NO.	SHEET OF	REV.	TITLE	SCALE	DATE	DRAWN BY	FILE NAME	MADE FROM
350575-62	2/2	0	L & L SPECIAL FURNACE CO. INC. MODEL EL 2848 WIRING DIAGRAM 480 Vac/3/60 - DYNA-TROL	1 = 10	1/23/06	RLC	L & L EL 2848 350575-62.dwg	350575-22

APPROVED FOR CONSTRUCTION	DATE	REVISION DESCRIPTION