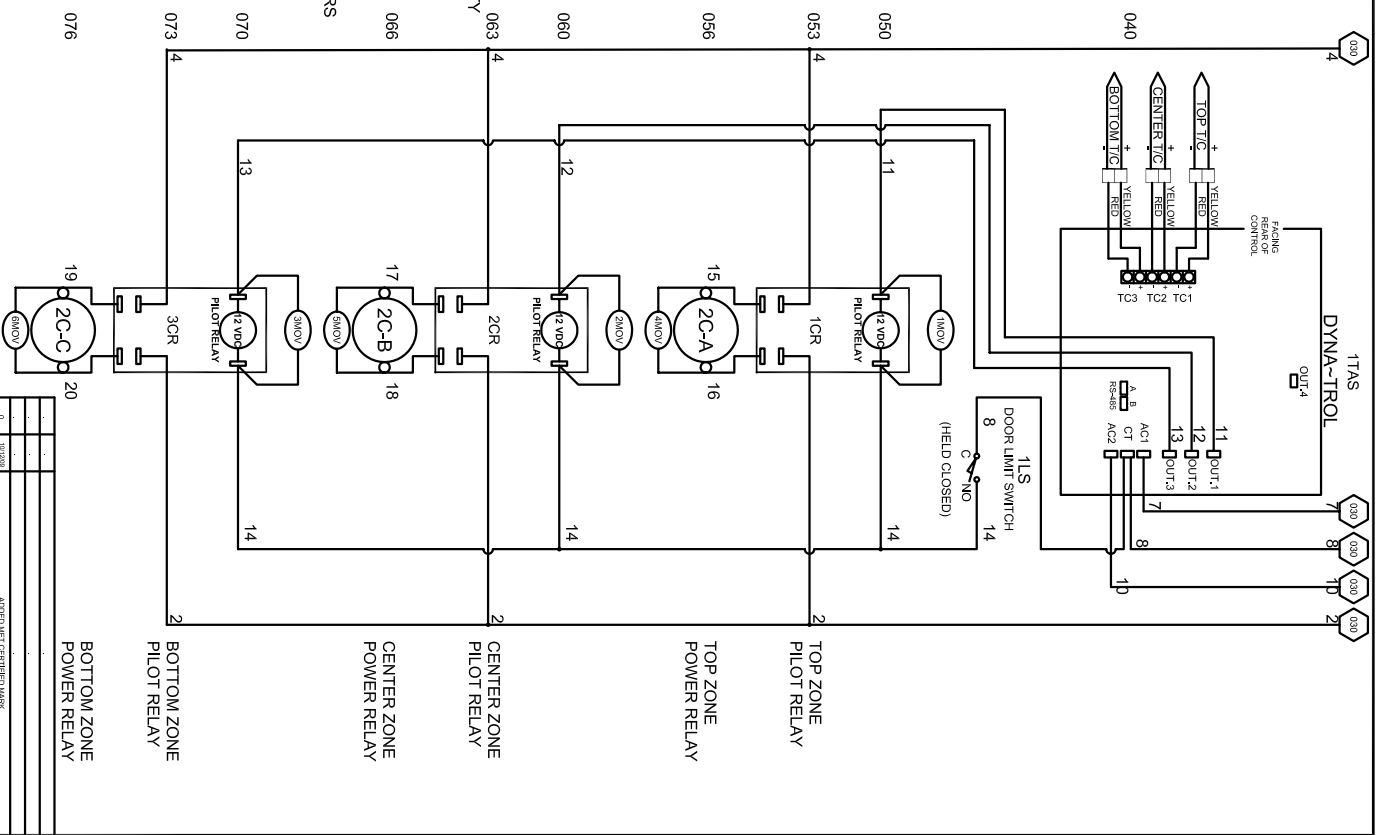
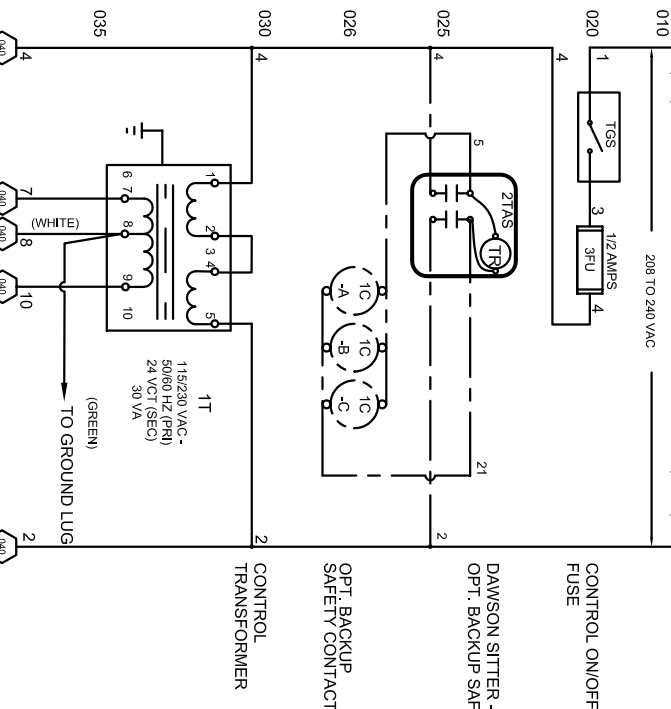


**POWER REQUIREMENTS**

VOLTAGE	380 / 3 / 60
KW	27
H.P.	N/A
FULL LOAD AMPS	L1 41 L2 41 L3 41

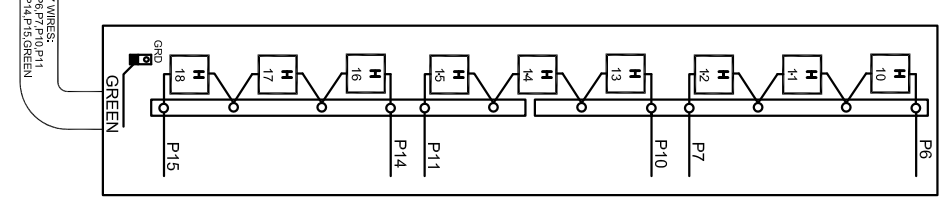
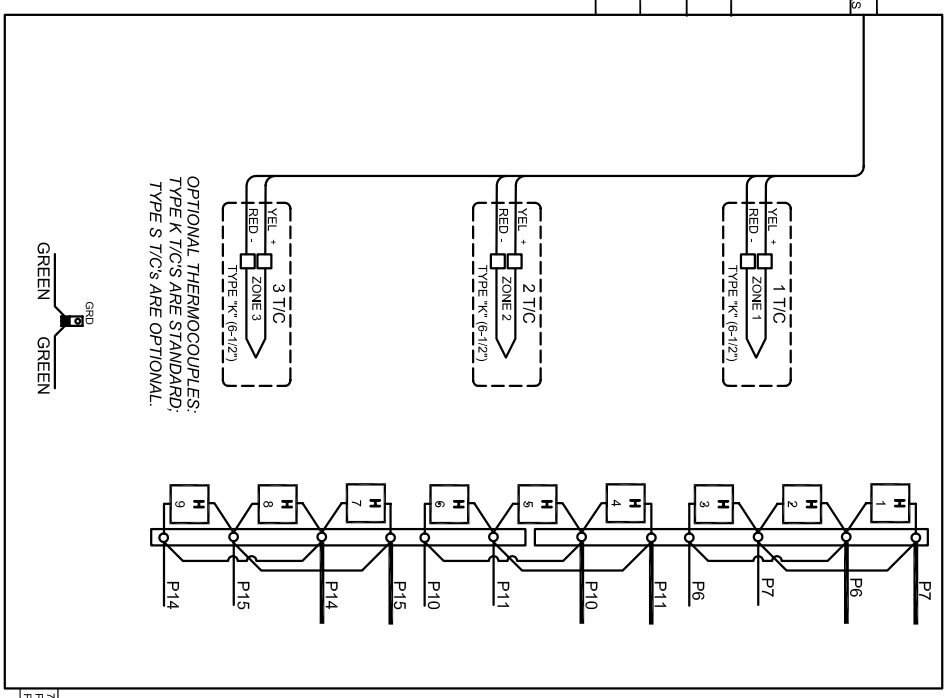
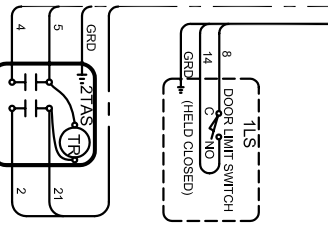
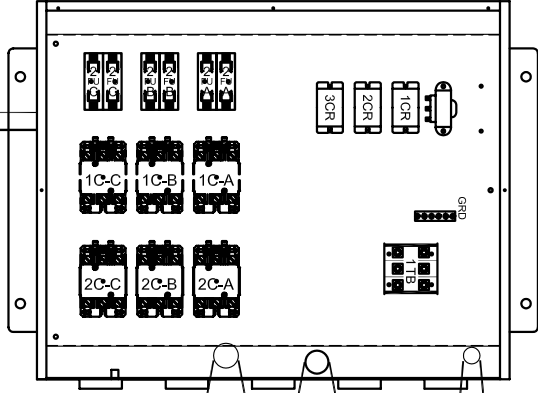
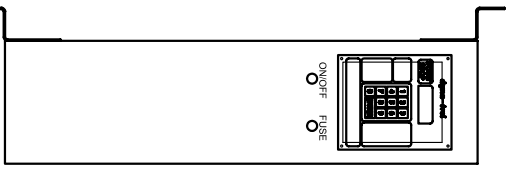
**SAFETY SWITCH BY CUSTOMER**  
 Connect to 380 Volt, 3 Phase  
 50 or 60 Cycles.  
**SEE POWER REQUIREMENT TABLE**



**MODEL EL 2848 WRING DIAGRAM**  
**380 Vac/3/60 - DYNA-TROL**

**CONTROL TRANSFORMER**  
**OPT. BACKUP SAFETY CONTACTORS**  
**DAWSON SITTER - OPT. BACKUP SAFETY**  
**CONTROL ON/OFF, FUSE**  
**16 AWG TFFN / MTTW**

**TOP ZONE PILOT RELAY**  
**TOP ZONE POWER RELAY**  
**CENTER ZONE PILOT RELAY**  
**CENTER ZONE POWER RELAY**  
**BOTTOM ZONE PILOT RELAY**  
**BOTTOM ZONE POWER RELAY**



- NOTES**
- 1) All electrical feeders & equipment will be supplied & installed by the customer. Meeting requirements set by the local & national electrical code standards. L & L recommends any such installation be approved by a certified electrical inspector.
  - 2) For Kilns not equipped with a fused safety disconnect switch, L & L recommends the customer to install such equipment within 6 feet of operating furnace.
  - 3) Industrial & commercial applications may require the installation of a LOCKOUT/TAGOUT device to meet safety & maintenance requirements.
  - 4) Wire gauge and insulation of Power Wires and Control Circuit Wires are as marked.
  - 5) Power Wire Color is Black, and wires are numbered as marked.
  - 6) Control Circuit Wires are numbered as marked, and colors are:  
RED = 1, 3, 6, 8, 1, 13, 15, 17.  
BLACK = 2, 14, 16, 18, 19.  
WHITE = 7, 12.
  - 7) GREEN = GROUNDING AND BONDING WIRES.



DAWSON KILN SITTER/TIMER (OPTIONAL)

DRAWING NO.	SHEET OF	REV.	TITLE	SCALE	DATE	DRAWN BY	FILE NAME	MADE FROM
350575-52	2/2	0	MODEL EL 2848 WIRING DIAGRAM 380 Vac/3/60 - DYNA-TROL	1 = 10	1/23/06	DJC	L & L EL 2848 350575-52.dwg	350575-22

REV.#	DATE	REVISION DESCRIPTION
0	Initial	Added MET CERTIFIED MARK