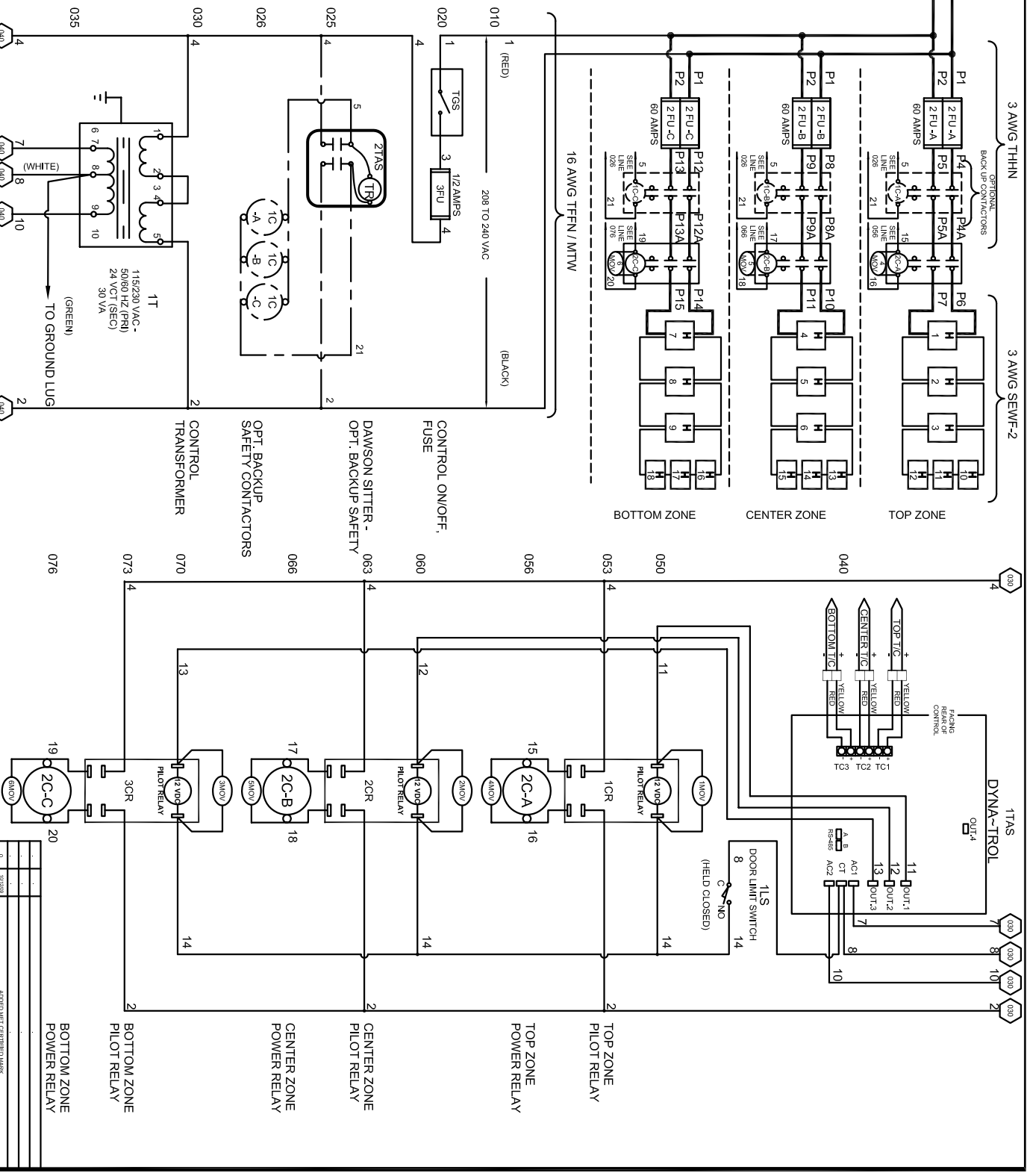
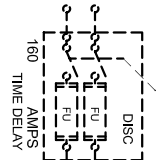


SAFETY SWITCH BY CUSTOMER
 Connect to 220 Volt, 1 Phase
 50 or 60 Cycles.
SEE POWER REQUIREMENT TABLE

POWER REQUIREMENTS	
VOLTAGE	220 / 1 / 60
KW	27
H.P.	N/A
FULL LOAD AMPS	L1 123 L2 123 L3 123

FUSED DISCONNECT BY OTHERS 220V/1/60

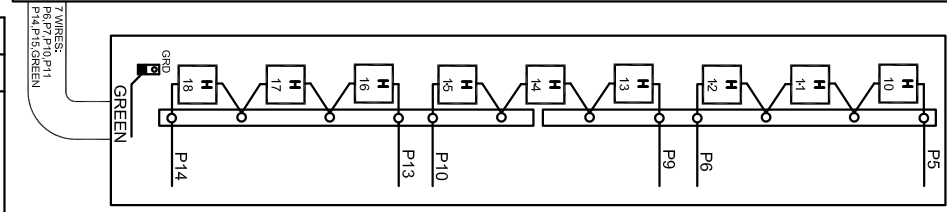
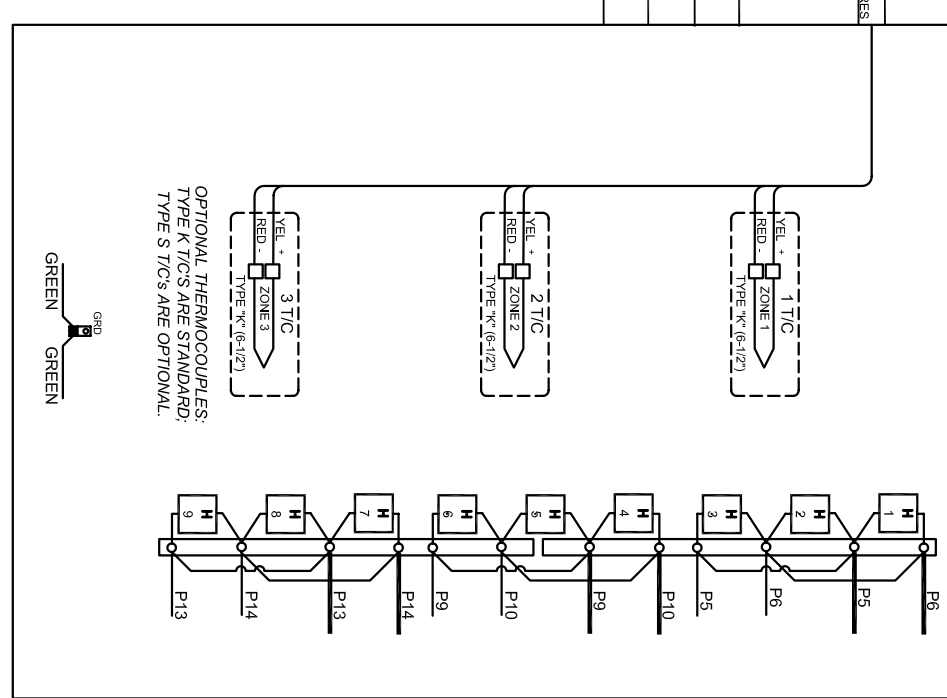
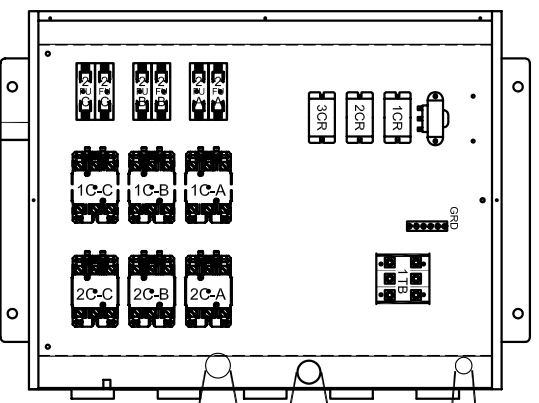
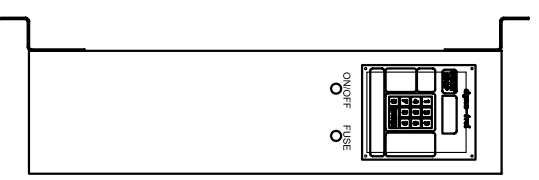




UL 499



DAWSON KILN SITTER/TIMER (OPTIONAL)



- NOTES**
- 1) All electrical feeders & equipment will be supplied & installed by the customer. Meeting requirements set by the local & national electrical code standards. L & L recommends any such installation be approved by a certified electrical inspector.
 - 2) For Kilns not equipped with a fused safety disconnect switch, L & L recommends the customer to install such equipment within 6 feet of operating furnace.
 - 3) Industrial & commercial applications may require the installation of a LOCKOUT/TAGOUT device to meet safety & maintenance requirements.
 - 6) Wire gauge and insulation of Power Wires and Control Circuit Wires are as marked.
 - 7) Power Wire Color is Black, and wires are numbered as marked.
 - 8) Control Circuit Wires are numbered as marked, and colors are:
 RED = 1, 3, 6, 8, 11, 13, 15, 17.
 BLACK = 2, 14, 16, 18, 19.
 WHITE = 7, 12.
 GREEN = GROUNDING AND BONDING WIRES.

DRAWING NO.	SHEET OF	REV.	L & L SPECIAL FURNACE CO. INC.	TITLE	SCALE	DATE	DRAWN BY	FILE NAME	MADE FROM						
350575-41	2/2	0	30 DAY 10% 60 DAY 20% 90 DAY 30% 180 DAY 40% 365 DAY 50%	MODEL EL 2848 WIRING DIAGRAM 220 Vac/1/60 - DYNA-TROL	1 = 10	1/23/06	RLC	L:\P\EL\EL2848\350575-41.dwg	\350575-21						
<table border="1"> <thead> <tr> <th>REV.#</th> <th>DATE</th> <th>REVISION DESCRIPTION</th> </tr> </thead> <tbody> <tr> <td>0</td> <td></td> <td>ADDED MET CERTIFICATION</td> </tr> </tbody> </table>										REV.#	DATE	REVISION DESCRIPTION	0		ADDED MET CERTIFICATION
REV.#	DATE	REVISION DESCRIPTION													
0		ADDED MET CERTIFICATION													