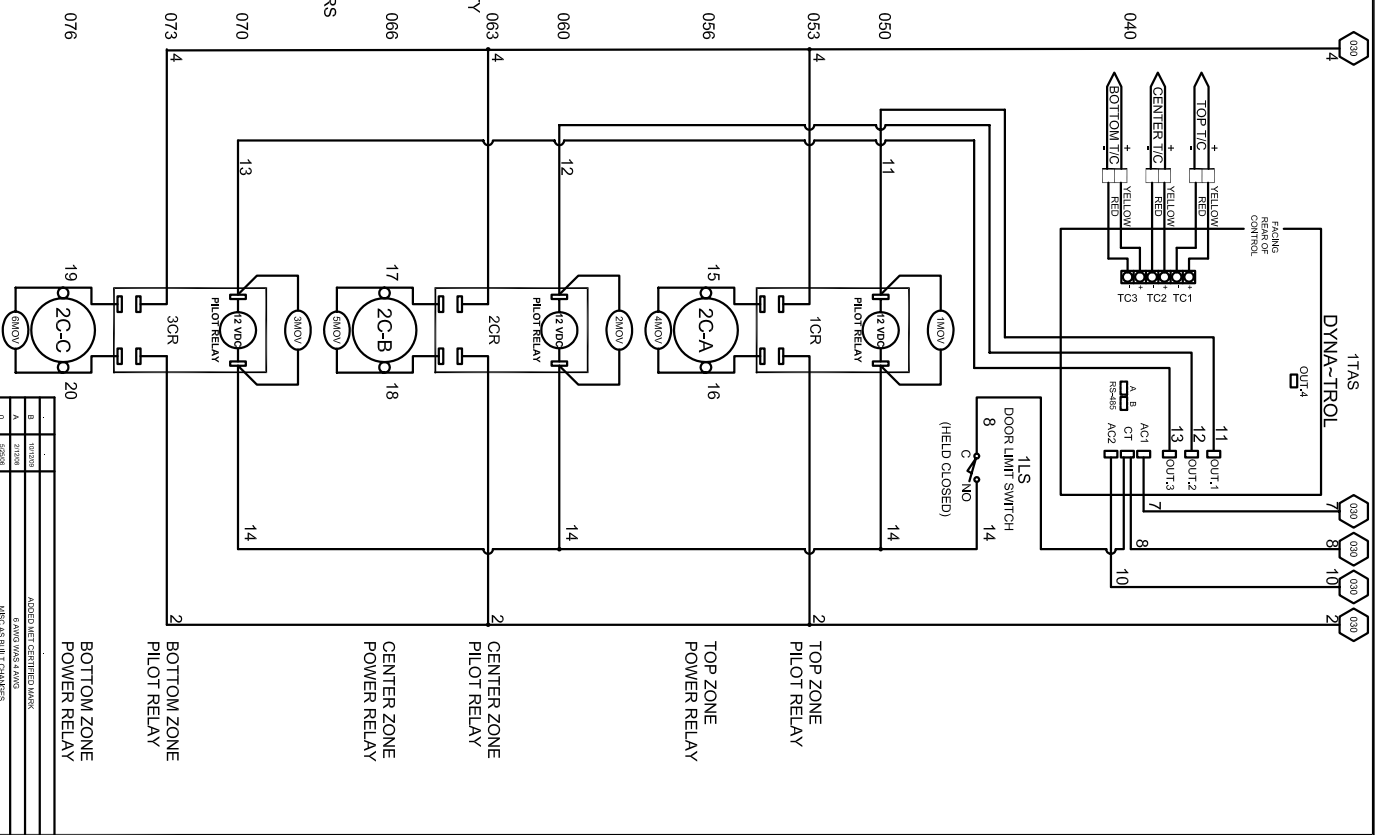
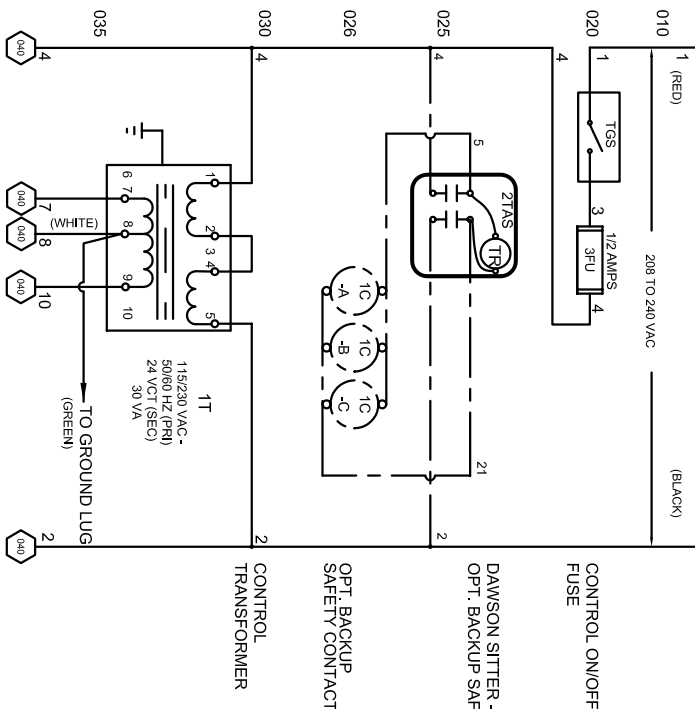
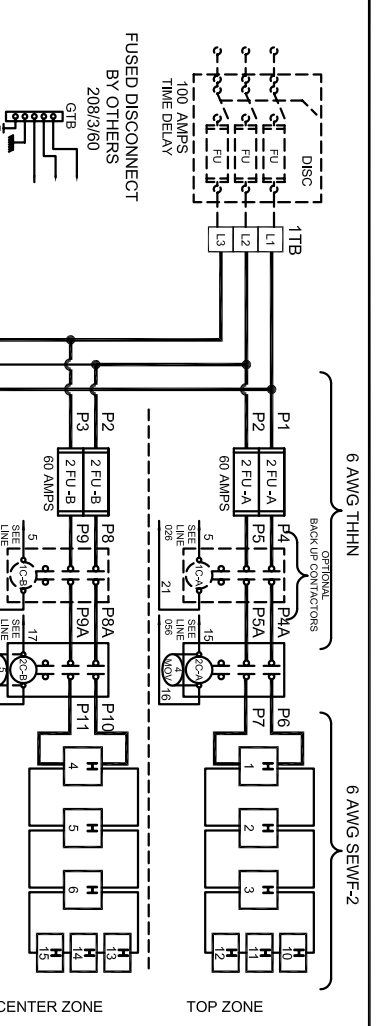
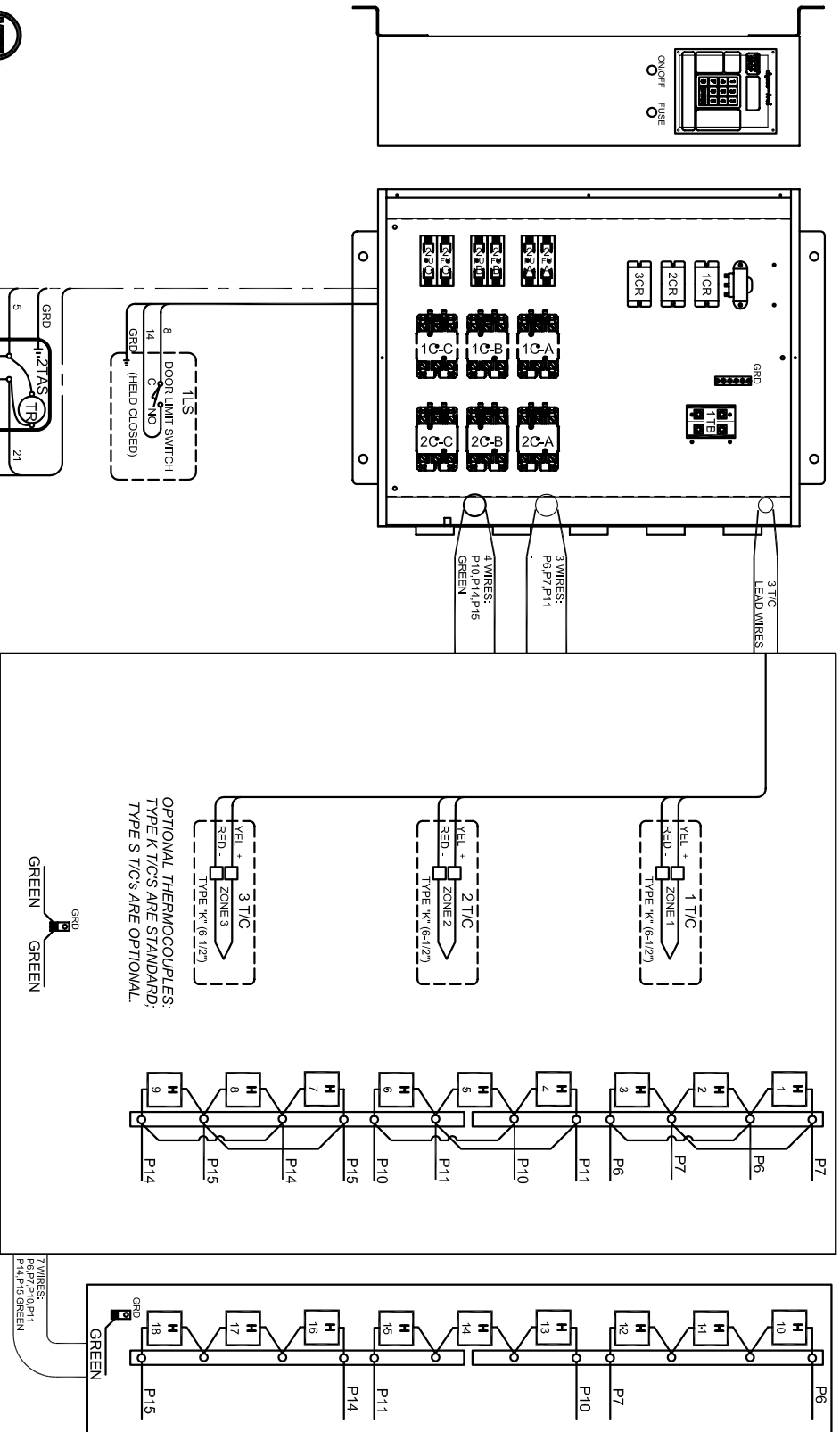


POWER REQUIREMENTS			
VOLTAGE	208 / 3 / 60		
H.P.	27		
FULL LOAD AMPS	L1	L2	L3
	75	75	75

SAFETY SWITCH BY CUSTOMER
 Connect to 208 Volt, 3 Phase
 50 or 60 Cycles.
SEE POWER REQUIREMENT TABLE



- NOTES**
- 1) All electrical feeders & equipment will be supplied & installed by the customer. Meeting requirements set by the local & national electrical code standards. L & L recommends any such installation be approved by a certified electrical inspector.
 - 2) For kilns not equipped with a fused safety disconnect switch, L & L recommends the customer to install such equipment within 6 feet of operating furnace.
 - 3) Industrial & commercial applications may require the installation of a LOCKOUT/TAGOUT device to meet safety & maintenance requirements.
 - 6) Wire gauge and insulation of Power Wires and Control Circuit Wires are as marked.
 - 7) Power Wire Color is Black, and wires are numbered as marked.
 - 8) Control Circuit Wires are numbered as marked, and colors are:
 RED = 1,3,5, 7-13,15,17,19. (WIRE NOS 6 & 9 NOT USED)
 BLACK = 2,16,18,20,21.
 WHITE = 8,14.
 GREEN = GROUNDING AND BONDING WIRES.



DRAWING NO.	SHEET OF	REV.	TITLE	SCALE	DATE	DRAWN BY	FILE NAME	MADE FROM									
350575-22	2/2	B	L & L SPECIAL FURNACE CO. INC. 20 WEST 10TH ST. NEW YORK, N.Y. 10011	1 = 10	1/24/06	DJC	L & L EL 2848 350575-22.dwg	350574-22									
<table border="1"> <tr> <td>REV.</td> <td>DATE</td> <td>REVISION DESCRIPTION</td> </tr> <tr> <td>0</td> <td></td> <td>ISSUE FOR BIDDING</td> </tr> <tr> <td>1</td> <td></td> <td>REVISED TO SHOW CHANGES</td> </tr> </table>									REV.	DATE	REVISION DESCRIPTION	0		ISSUE FOR BIDDING	1		REVISED TO SHOW CHANGES
REV.	DATE	REVISION DESCRIPTION															
0		ISSUE FOR BIDDING															
1		REVISED TO SHOW CHANGES															



UL 499

DAWSON KILN SITTER/TIMER (OPTIONAL)

MODEL EL 2848 WIRING DIAGRAM
208 Vac/3/60 - DYNA-TROL