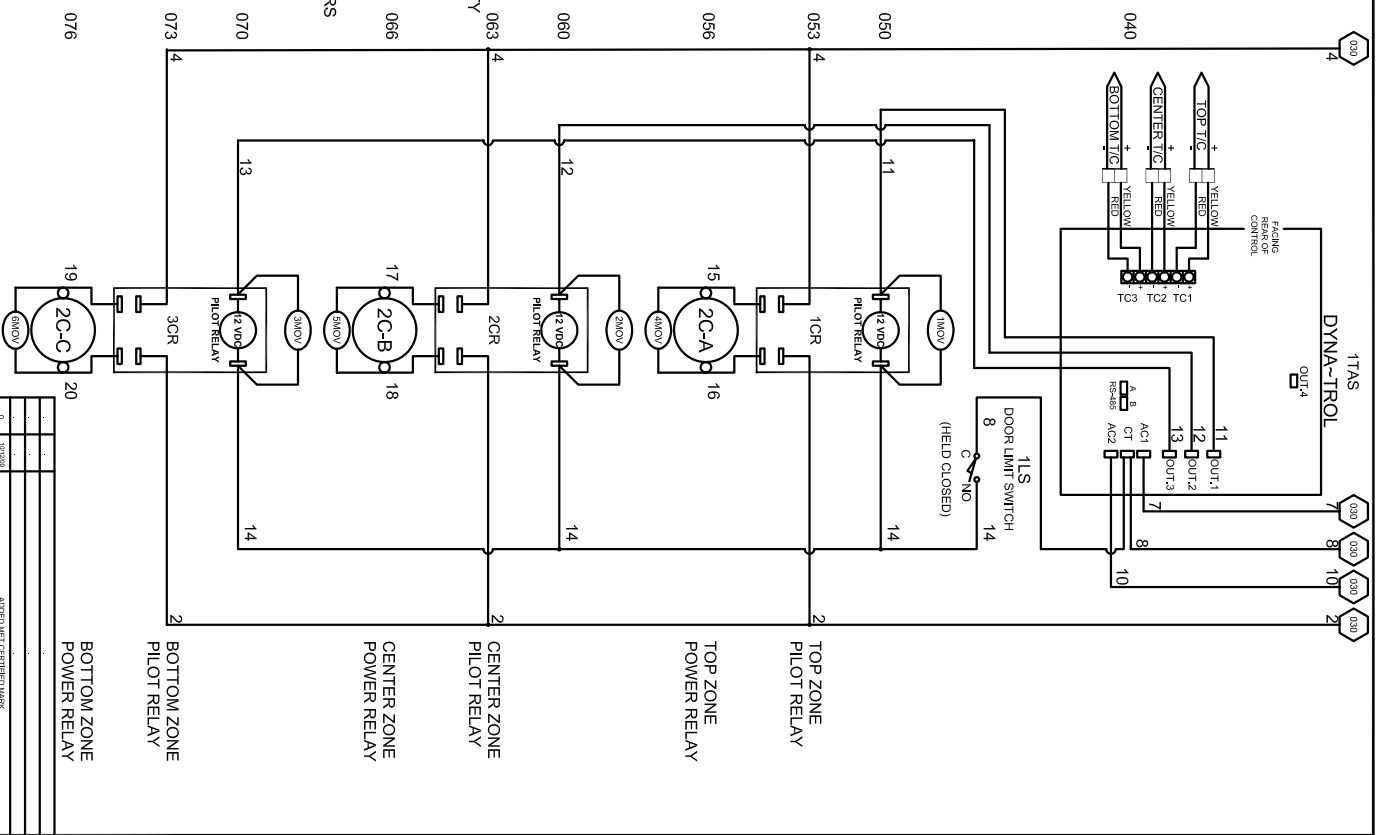
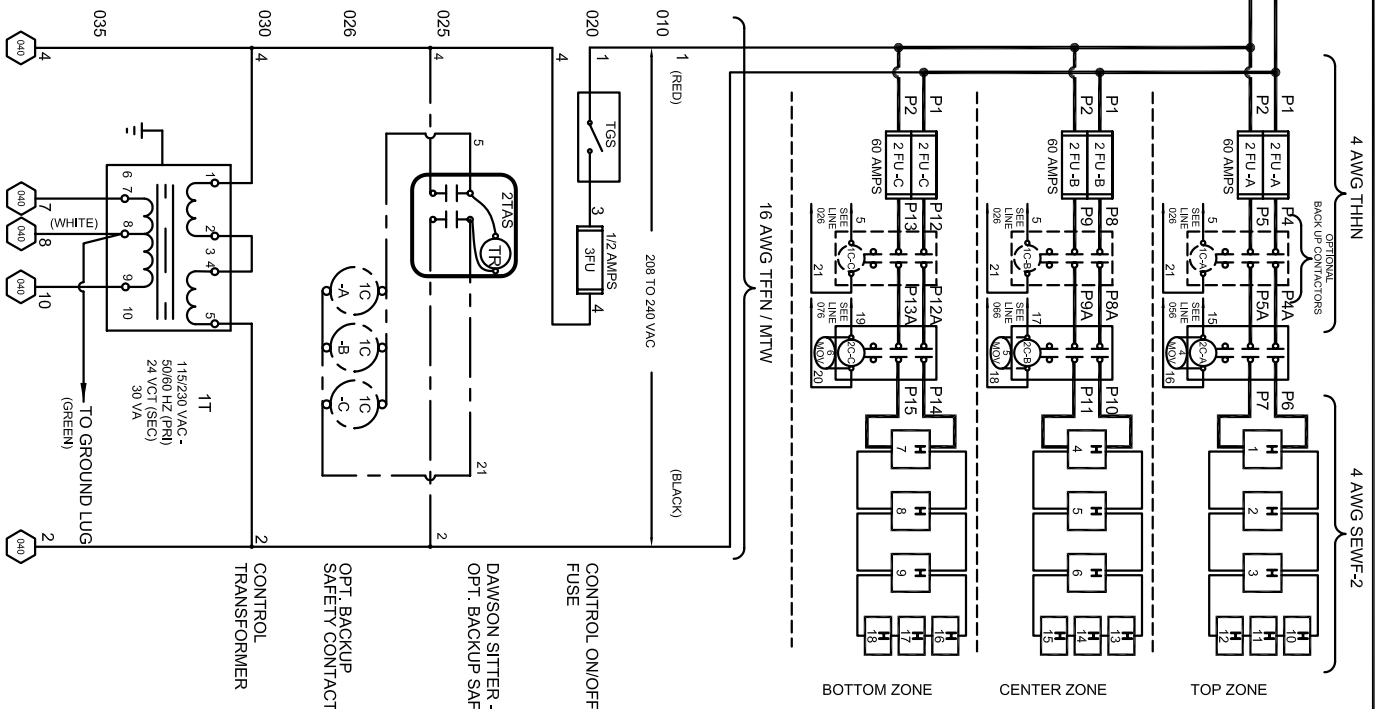
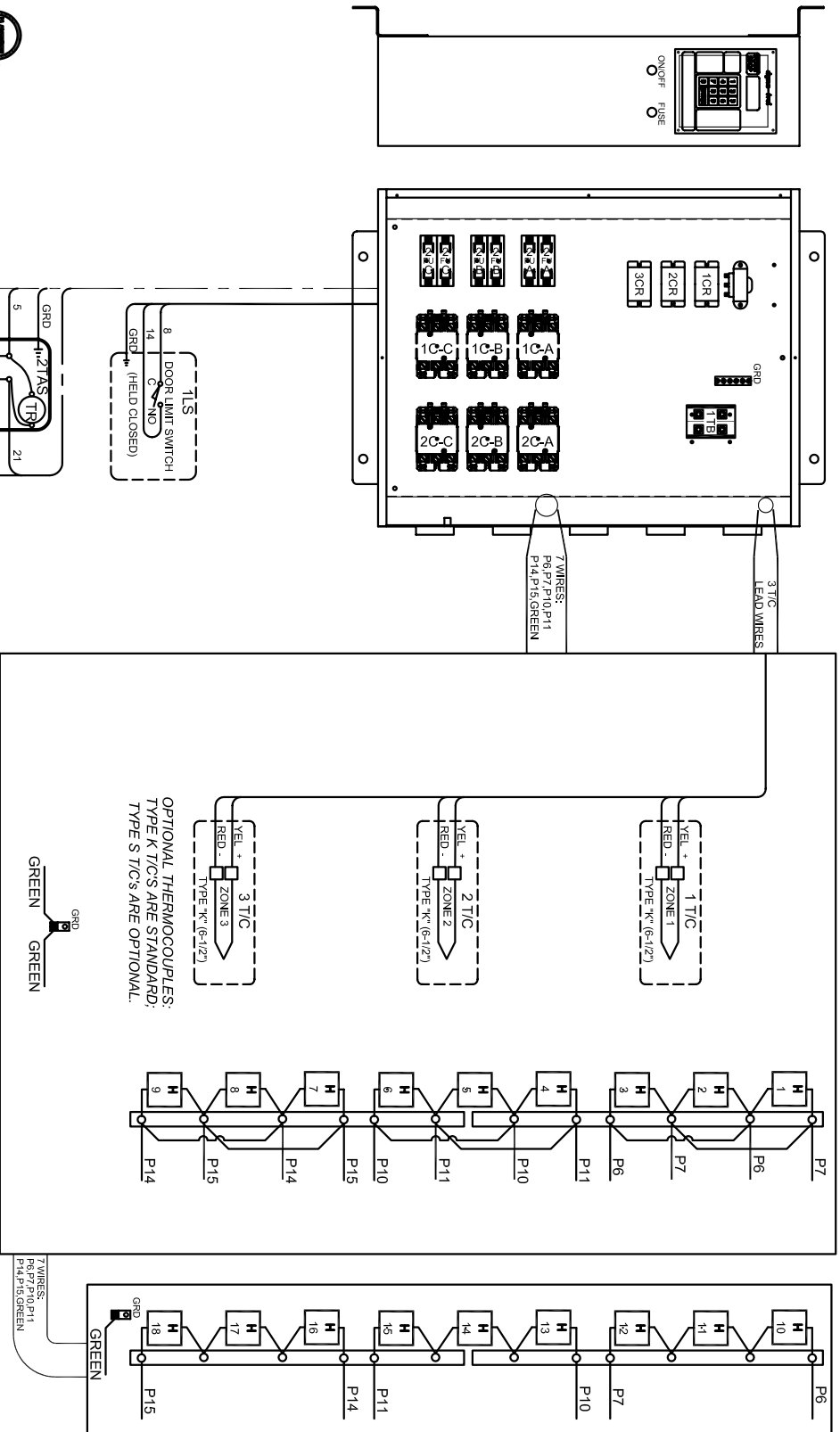


SAFETY SWITCH BY CUSTOMER
 Connect to 208 Volt, 1 Phase
 50 or 60 Cycles.
SEE POWER REQUIREMENT TABLE

POWER REQUIREMENTS	
VOLTAGE	208 / 1 / 60
H.P.	N/A
FULL LOAD AMPS	L1 130 L2 130 L3 130



- NOTES**
- 1) All electrical feeders & equipment will be supplied & installed by the customer. Meeting requirements set by the local & national electrical code standards. L & L recommends any such installation be approved by a certified electrical inspector.
 - 2) For Kilns not equipped with a fused safety disconnect switch, L & L recommends the customer to install such equipment within 6 feet of operating furnace.
 - 3) Industrial & commercial applications may require the installation of a LOCKOUT/TAGOUT device to meet safety & maintenance requirements.
 - 6) Wire gauge and insulation of Power Wires and Control Circuit Wires are as marked.
 - 7) Power Wire Color is Black, and wires are numbered as marked.
 - 8) Control Circuit Wires are numbered as marked, and colors are:
 RED = 1,3,5, 7-13, 15, 17, 19. (WIRE NOS 6 & 9 NOT USED)
 BLACK = 2, 16, 18, 20, 21.
 WHITE = 8, 14.
 GREEN = GROUNDING AND BONDING WIRES.



DAWSON KILN SITTER/TIMER (OPTIONAL)

DRAWING NO.	SHEET OF	REV.	TITLE	SCALE	DATE	DRAWN BY	FILE NAME	MADE FROM
350575-21	2/2	0	L & L SPECIAL FURNACE CO. INC. MODEL EL 2848 WIRING DIAGRAM 208 Vac/1/60 - DYNA-TROL	1 = 10	1/24/06	RLC	L & L EL 2848 350575-21.dwg	350574-21

REV.	DATE	DESCRIPTION
0		ADDED MET CERTIFICATION
		REVISION DESCRIPTION