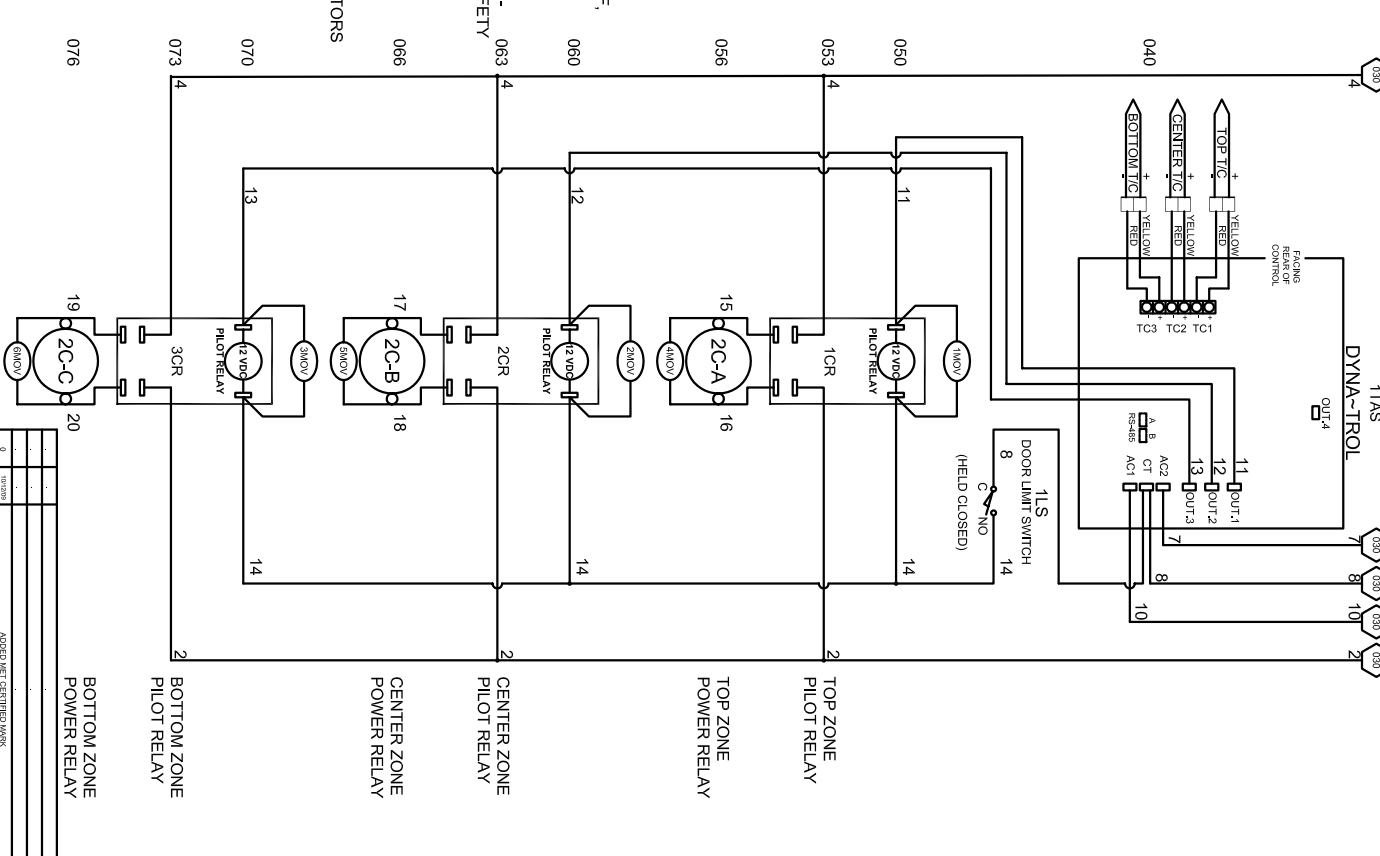
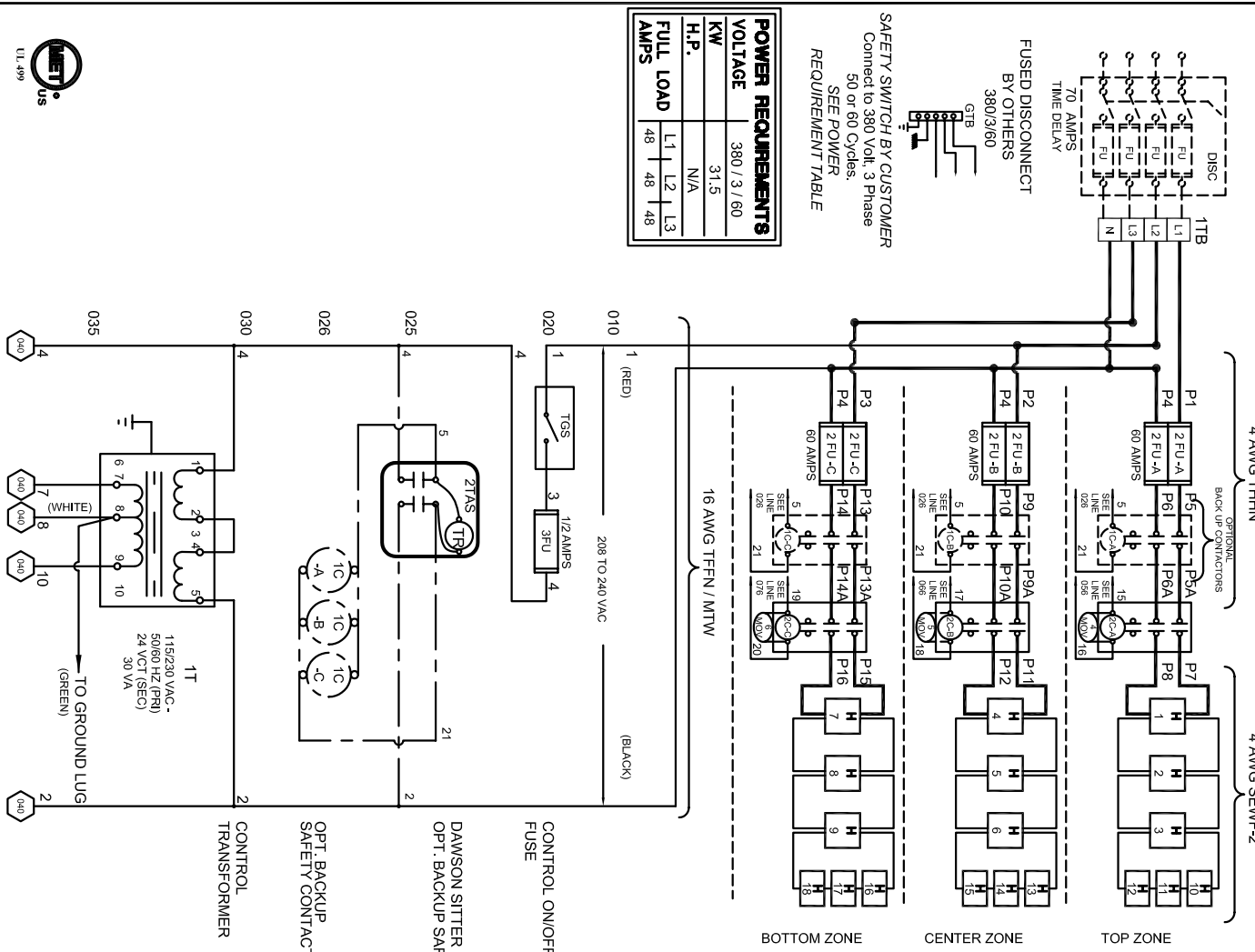
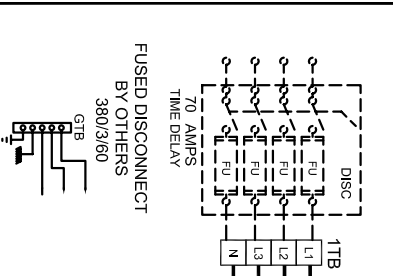


POWER REQUIREMENTS			
VOLTAGE	380 / 3 / 60		
KW	31.5		
H.P.	N/A		
FULL LOAD AMPS	L1	L2	L3
	48	48	48
	48	48	48

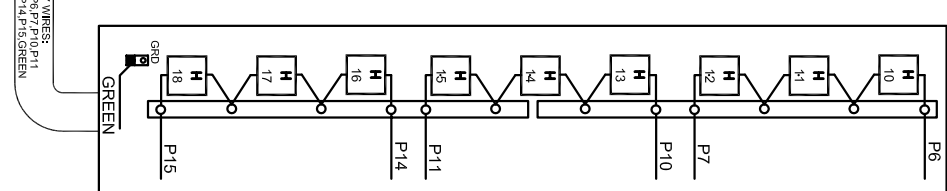
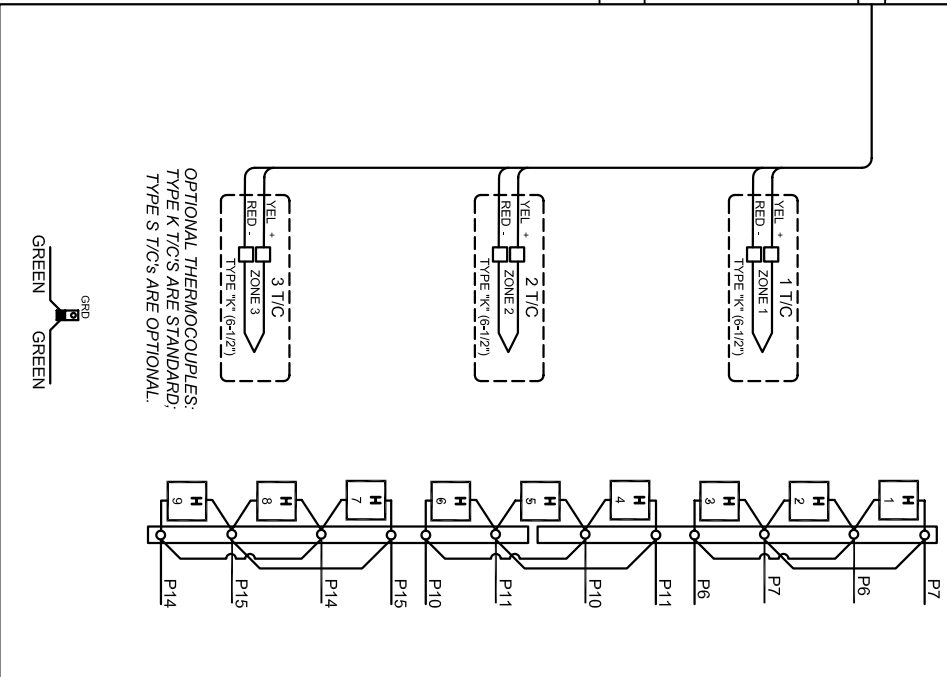
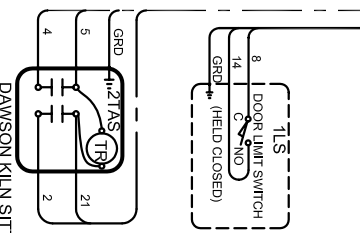
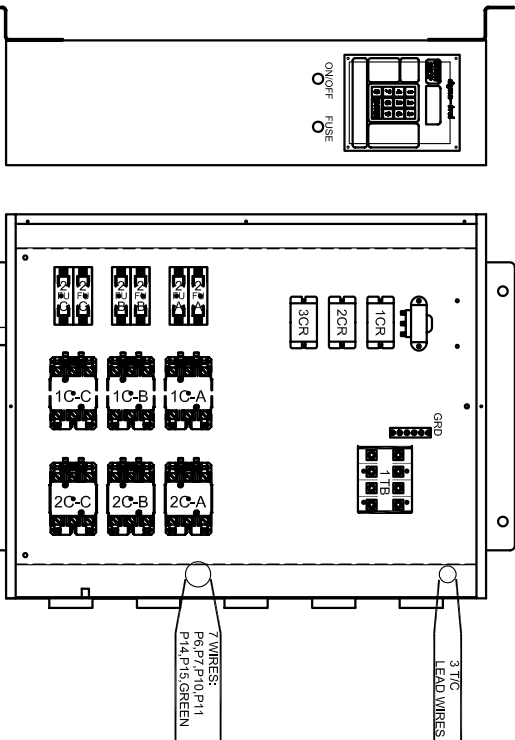
SAFETY SWITCH BY CUSTOMER
 Connect to 380 Volt, 3 Phase
 50 or 60 Cycles.
 SEE POWER REQUIREMENT TABLE



DRAWING NO. 350574-52 SHEET OF 1/2 REV. 0 L & L SPECIAL FURNACE CO., INC. TITLE MODEL EL 3048 WIRING DIAGRAM 380 Vac/3/60 - DYNA-TROL SCALE 1 = 10 DATE 1/18/06 DRAWN BY PJC FILE NAME L&L EL3048 350574-52.dwg MADE FROM 350574-22



REV. #	DATE	REVISION DESCRIPTION
0		ADDED MET CERTIFIED MARK



- NOTES**
- 1) All electrical feeders & equipment will be supplied & installed by the customer, meeting requirements set by the local & national electrical code standards. L & L recommends any such installation be approved by a certified electrical inspector.
 - 2) For kilns not equipped with a fused safety disconnect switch, L & L recommends the customer to install such equipment within 6 feet of operating furnace.
 - 3) Industrial & commercial applications may require the installation of a LOCKOUT/TAGOUT device to meet safety & maintenance requirements.
 - 4) Wire gauge and insulation of Power Wires and Control Circuit Wires are as marked.
 - 5) Power Wire Color is Black, and wires are numbered as marked.
 - 6) Control Circuit Wires are numbered as marked, and colors are:
 RED = 1,3,-6,-8-11,13,15,17.
 BLACK = 2,14,16,18,19.
 WHITE = 7,12.
 GREEN = GROUNDING AND BONDING WIRES.

DRAWINGS NO.	SHEET OF	REV.	TITLE	SCALE	DATE	DRAWN BY	FILE NAME	MADE FROM
350574-52	2/2	0	MODEL EL 3048 WIRING DIAGRAM 380 Vac/3/60 - DYNA-TROL	1 = 10	1/18/06	DJC	L & L EL 3048 350574-52.dwg	350574-22



UL 499

DAWSON KILN SITTER/TIMER (OPTIONAL)

REV. #	DATE	DESCRIPTION
0		ADDED MET. IDENTIFIED MARK
1		REVISION DESCRIPTION