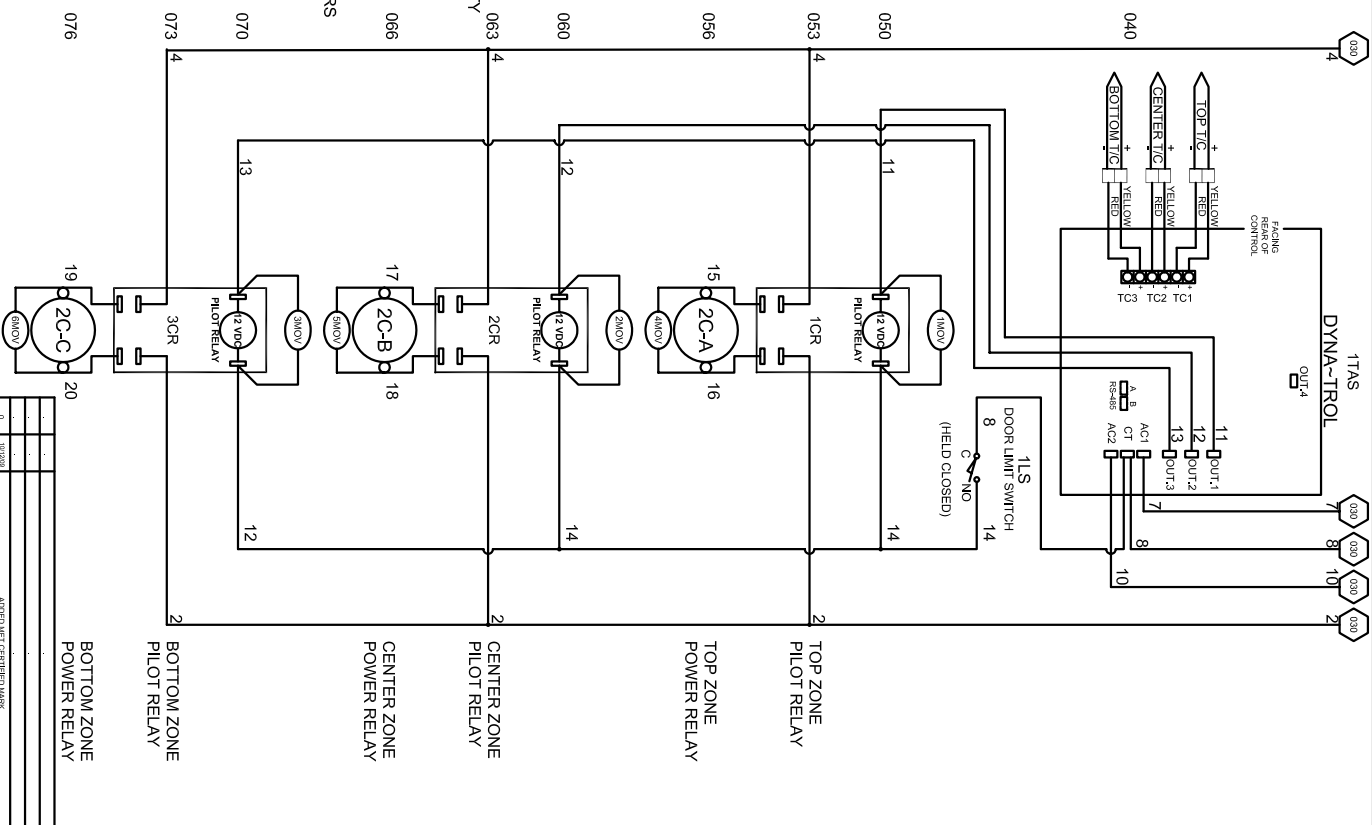
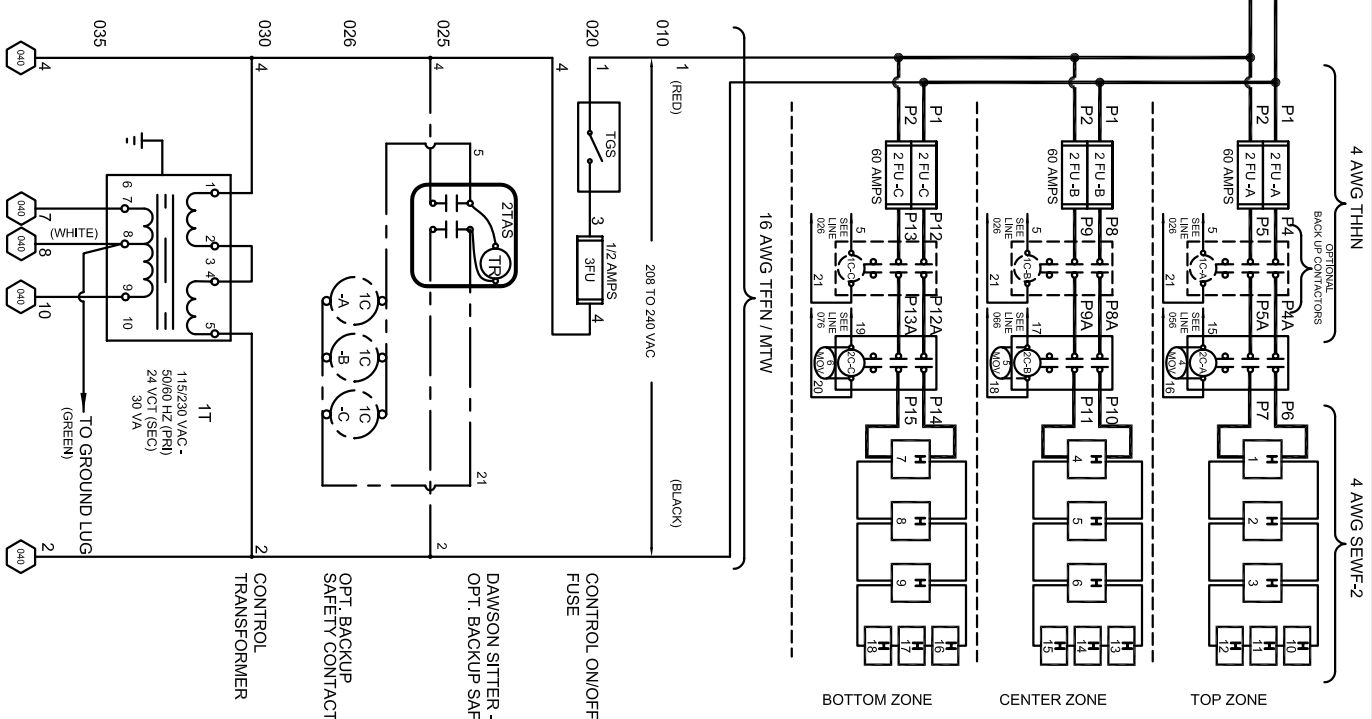
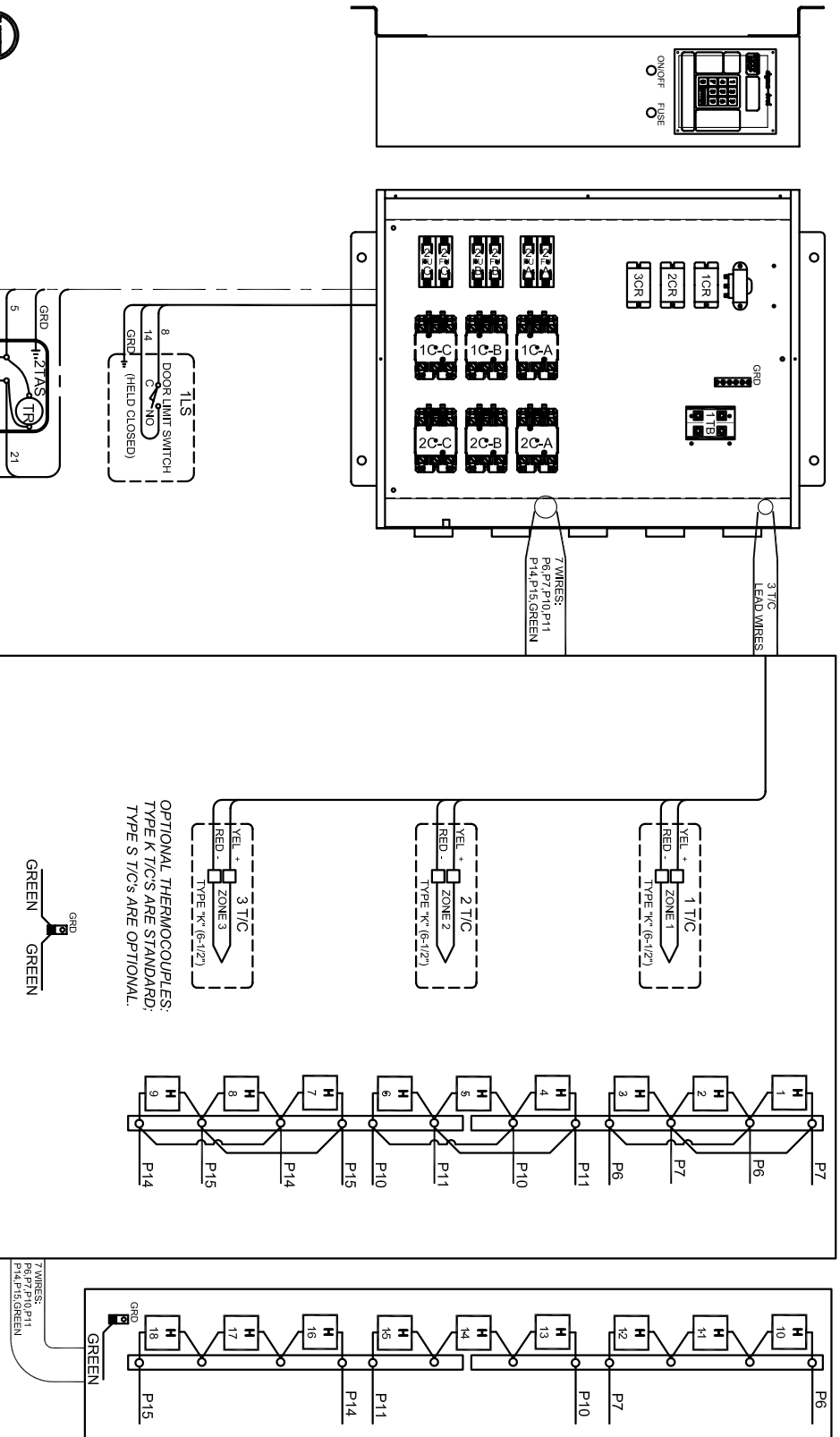


SAFETY SWITCH BY CUSTOMER
 Connect to 220 Volt, 1 Phase
 50 or 60 Cycles.
SEE POWER REQUIREMENT TABLE

POWER REQUIREMENTS		
VOLTAGE	220/1/60	
H.P.	31.5	
FULL LOAD AMPS	L1	L2 L3
	144	144 1 --



- NOTES**
- 1) All electrical feeders & equipment will be supplied & installed by the customer. Meeting requirements set by the local & national electrical code standards. L & L recommends any such installation be approved by a certified electrical inspector.
 - 2) For Kilns not equipped with a fused safety disconnect switch, L & L recommends the customer to install such equipment within 6 feet of operating furnace.
 - 3) Industrial & commercial applications may require the installation of a LOCKOUT/TAGOUT device to meet safety & maintenance requirements.
 - 6) Wire gauge and insulation of Power Wires and Control Circuit Wires are as marked.
 - 7) Power Wire Color's Black, and wires are numbered as marked.
 - 8) Control Circuit Wires are numbered as marked, and colors are:
 RED = 1,3,5, 7-13,15,17,19. (WIRE NOS 6 & 9 NOT USED)
 BLACK = 2,16,18,20,21.
 WHITE = 8,14.
 GREEN = GROUNDING AND BONDING WIRES.



UL 499

DAWSON KILN SITTER/TIMER (OPTIONAL)

DRAWING NO.	SHEET OF	REV.	TITLE	SCALE	DATE	DRAWN BY	FILE NAME	MADE FROM
350574-41	2/2	0	L & L SPECIAL FURNACE CO. INC. MODEL E1 3048 WIRING DIAGRAM 220 Vac/1/60 - DYNA-TROL	1 = 10	1/18/06	RLC	L:\P\EL\13048 350574-41.dwg	\350574-21

REV.#	DATE	DESCRIPTION
0		ADDED MET CERTIFICATION
		REVISION DESCRIPTION