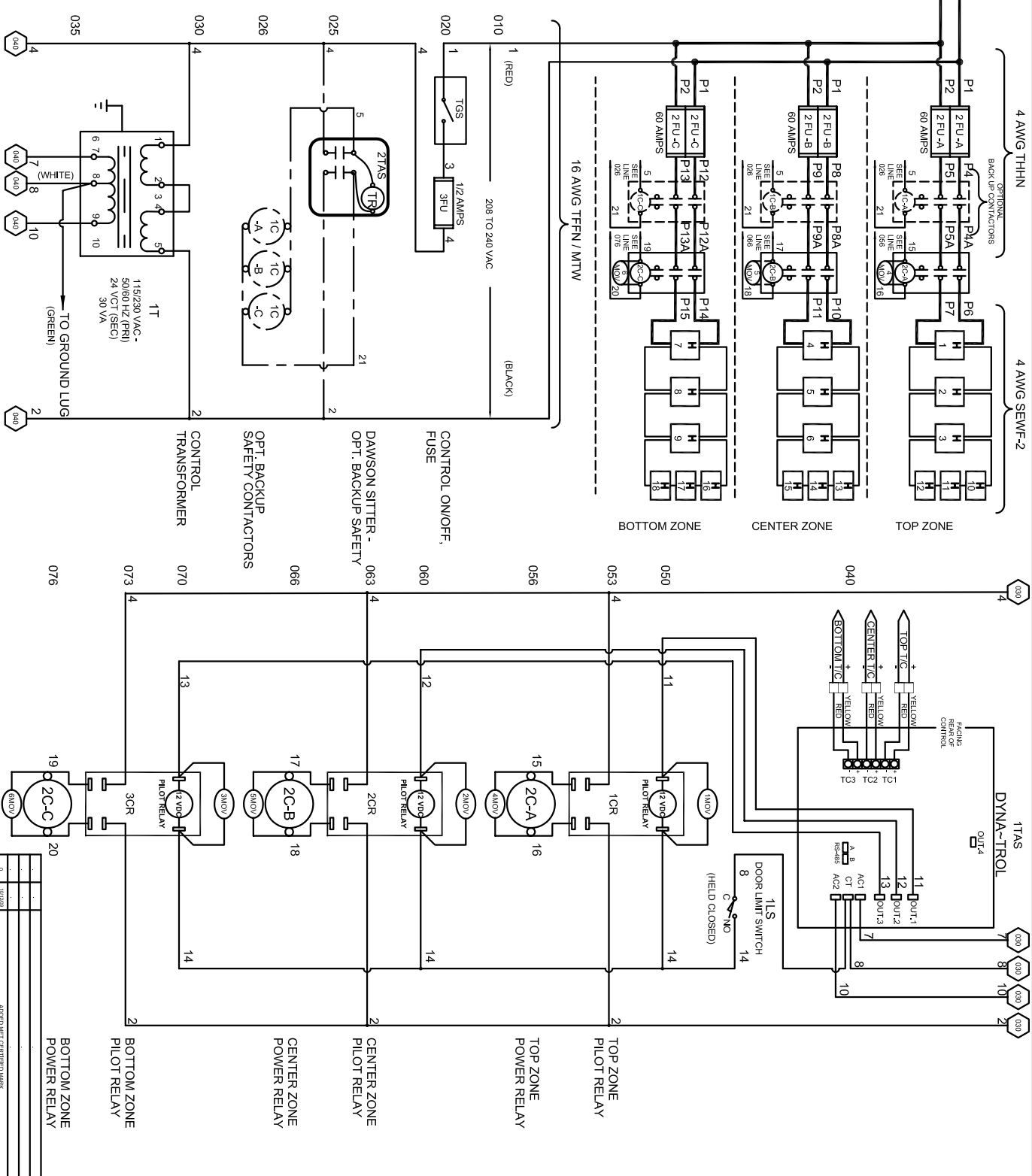


**SAFETY SWITCH BY CUSTOMER**  
 Connect to 240 Volt, 1 Phase  
 50 or 60 Cycles.  
**SEE POWER REQUIREMENT TABLE**

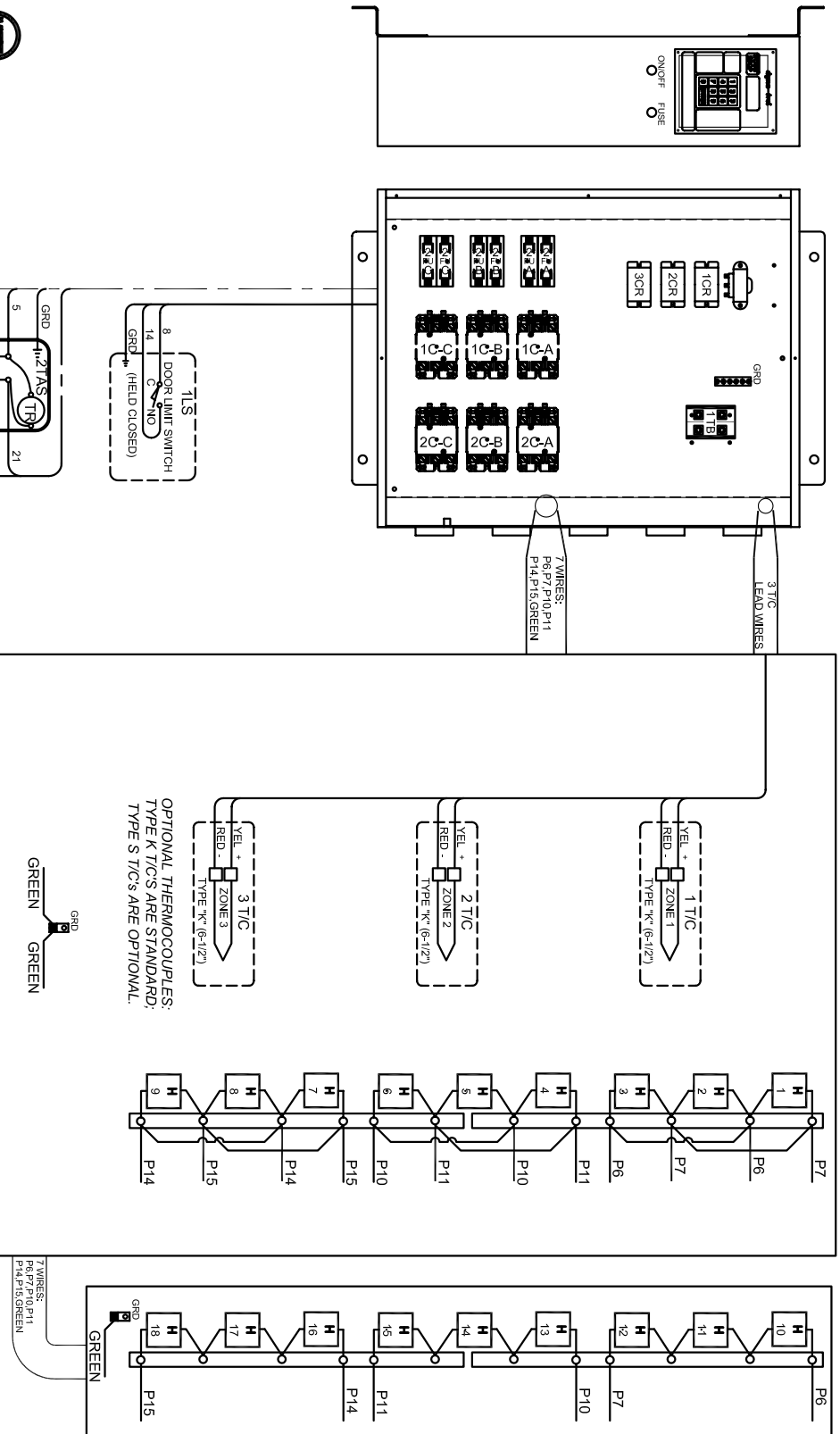
POWER REQUIREMENTS	
VOLTAGE	240/1/60
KW	31.5
H.P.	N/A
FULL LOAD AMPS	L1 L2 L3 132 132 132



UL 499



- NOTES**
- 1) All electrical feeders & equipment will be supplied & installed by the customer. Meeting requirements set by the local & national electrical code standards. L & L recommends any such installation be approved by a certified electrical inspector.
  - 2) For kilns not equipped with a fused safety disconnect switch, L & L recommends the customer to install such equipment within 6 feet of operating furnace.
  - 3) Industrial & commercial applications may require the installation of a LOCKOUT/TAGOUT device to meet safety & maintenance requirements.
  - 6) Wire gauge and insulation of Power Wires and Control Circuit Wires are as marked.
  - 7) Power Wire Color is Black, and wires are numbered as marked.
  - 8) Control Circuit Wires are numbered as marked, and colors are:  
 RED = 1, 3-5, 7-13, 15, 17, 19. (WIRE NOS 6 & 9 NOT USED)  
 BLACK = 2, 16, 18, 20, 21.  
 WHITE = 8, 14.  
 GREEN = GROUNDING AND BONDING WIRES.



UL 499

DAWSON KILN SITTER/TIMER (OPTIONAL)

DRAWING NO.	SHEET OF	REV.	TITLE	SCALE	DATE	DRAWN BY	FILE NAME	MADE FROM
350574-31	2/2	0	L & L SPECIAL FURNACE CO. INC. MODEL E1 3048 WIRING DIAGRAM 240 Vac/1/60 - DYNA-TROL	1 = 10	1/18/06	RLC	L:\P\EL\3048\350574-31.dwg	\350574-21



30 DAY RETURN POLICY

REV.	DATE	DESCRIPTION
0		ADDED MET CERTIFICATION
		REVISION DESCRIPTION