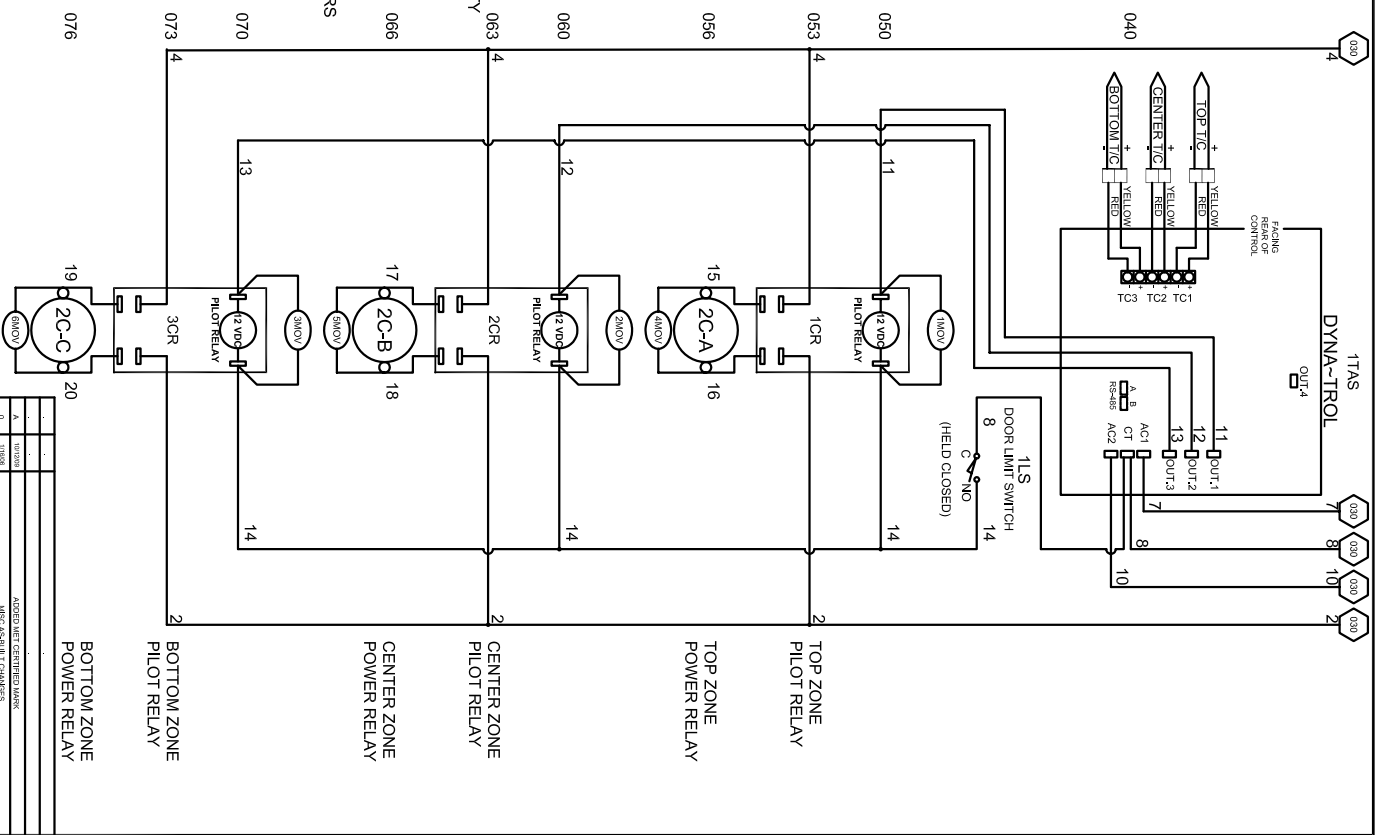
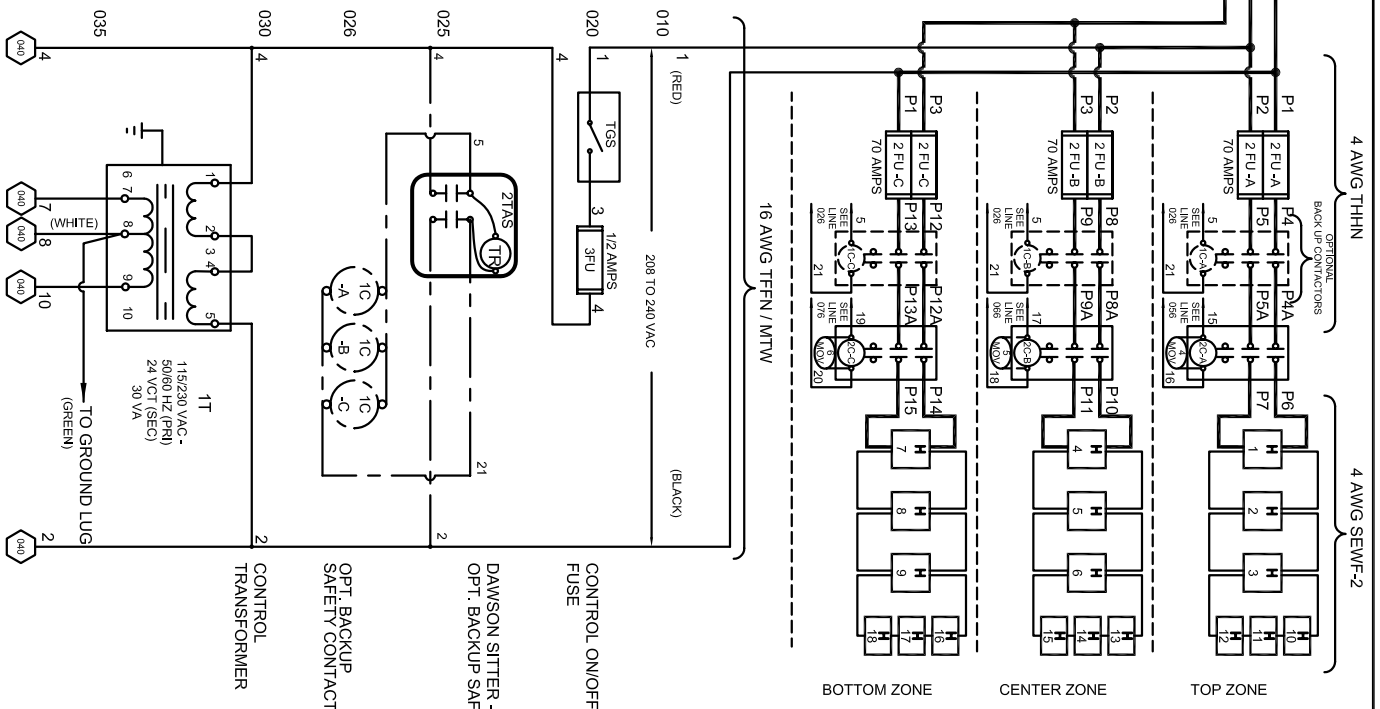
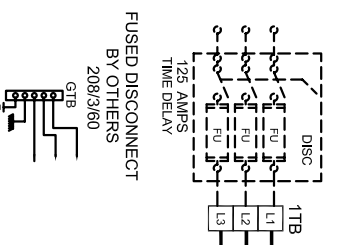


POWER REQUIREMENTS			
VOLTAGE	208 / 3 / 60		
H.P.	31.5		
FULL LOAD AMPS	L1	L2	L3
	88.0	88.0	88.0

**SAFETY SWITCH BY CUSTOMER**  
 Connect to 208 Volt, 3 Phase  
 50 or 60 Cycles.  
**SEE POWER REQUIREMENT TABLE**



350574-22  
 1/2  
 A

**L & L SPECIAL FINANCE CO. INC.**

**MODEL E1 3048 WIRING DIAGRAM**  
**208 Vac/3/60 - DYNA-TROL**

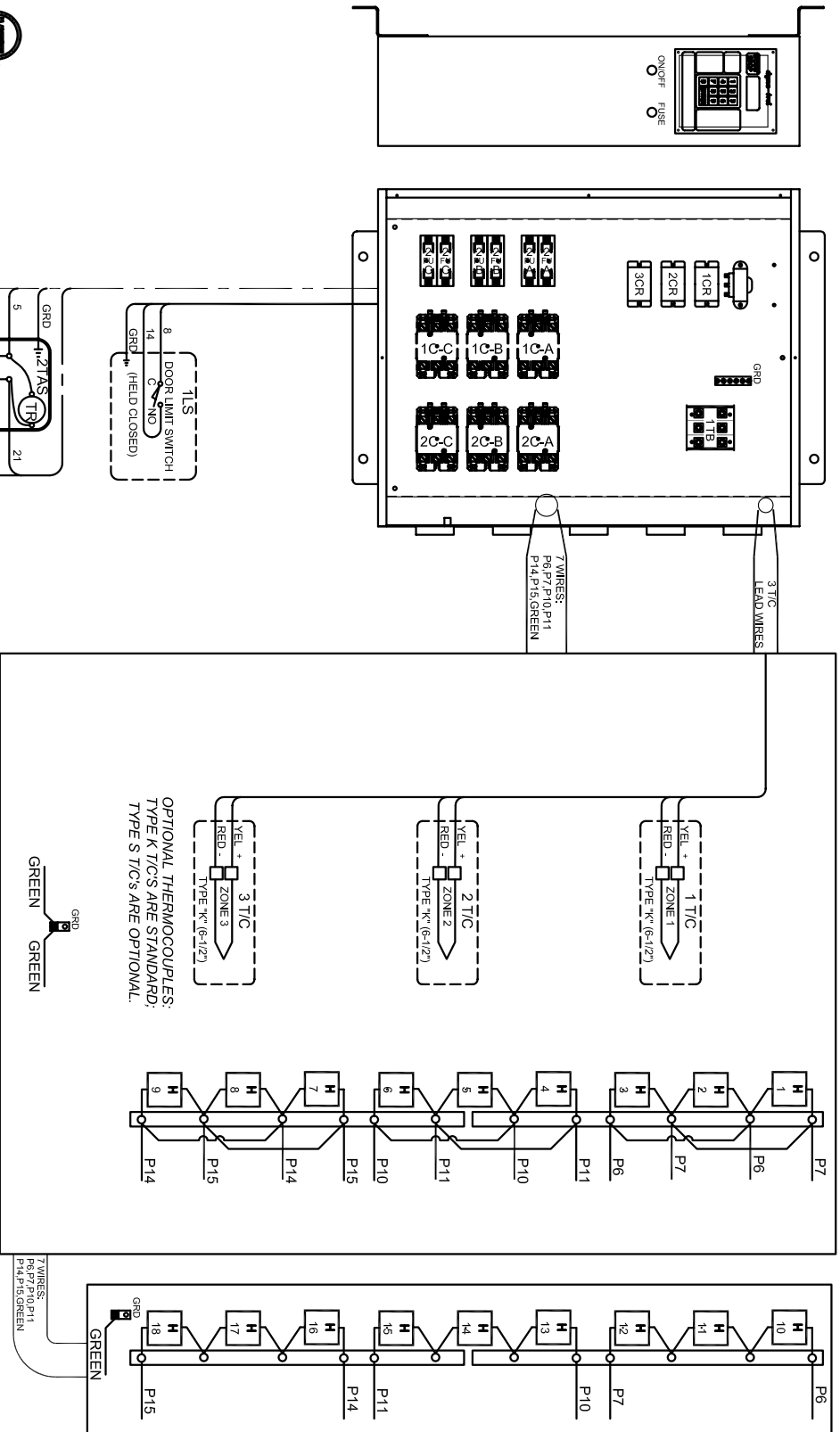
SCALE **1 = 10**

DATE **5/18/05**

DRAWN BY **GDLL**

REV #	DATE	REVISION DESCRIPTION
0		ISSUE FOR CONSTRUCTION
1		ISSUE FOR CONSTRUCTION
2		ISSUE FOR CONSTRUCTION
3		ISSUE FOR CONSTRUCTION
4		ISSUE FOR CONSTRUCTION
5		ISSUE FOR CONSTRUCTION
6		ISSUE FOR CONSTRUCTION
7		ISSUE FOR CONSTRUCTION
8		ISSUE FOR CONSTRUCTION
9		ISSUE FOR CONSTRUCTION
10		ISSUE FOR CONSTRUCTION

- NOTES**
- 1) All electrical feeders & equipment will be supplied & installed by the customer. Meeting requirements set by the local & national electrical code standards. L & L recommends any such installation be approved by a certified electrical inspector.
  - 2) For kilns not equipped with a fused safety disconnect switch, L & L recommends the customer to install such equipment within 6 feet of operating furnace.
  - 3) Industrial & commercial applications may require the installation of a LOCKOUT/TAGOUT device to meet safety & maintenance requirements.
  - 6) Wire gauge and insulation of Power Wires and Control Circuit Wires are as marked.
  - 7) Power Wire Color is Black, and wires are numbered as marked.
  - 8) Control Circuit Wires are numbered as marked, and colors are:  
 RED = 1,3,5, 7-13, 15, 17, 19. (WIRE NOS 6 & 9 NOT USED)  
 BLACK = 2, 16, 18, 20, 21.  
 WHITE = 8, 14.  
 GREEN = GROUNDING AND BONDING WIRES.



DAWSON KILN SITTER/TIMER (OPTIONAL)

DRAWING NO.	SHEET OF	REV	TITLE	SCALE	DATE	DRAWN BY	FILE NAME	MADE FROM
350574-22	2/2	A	L & L SPECIAL FURNACE CO. INC. MODEL E1 3048 WIRING DIAGRAM 208 Vac/3/60 - DYNA-TROL	1 = 10	5/18/05	GDJ	L:\P\EL\E13048 350574-22.dwg	\350573-22

REV #	DATE	REVISION DESCRIPTION
0		ISSUE
1		APPROVED FOR CONSTRUCTION
2		ISSUE
3		ISSUE
4		ISSUE
5		ISSUE