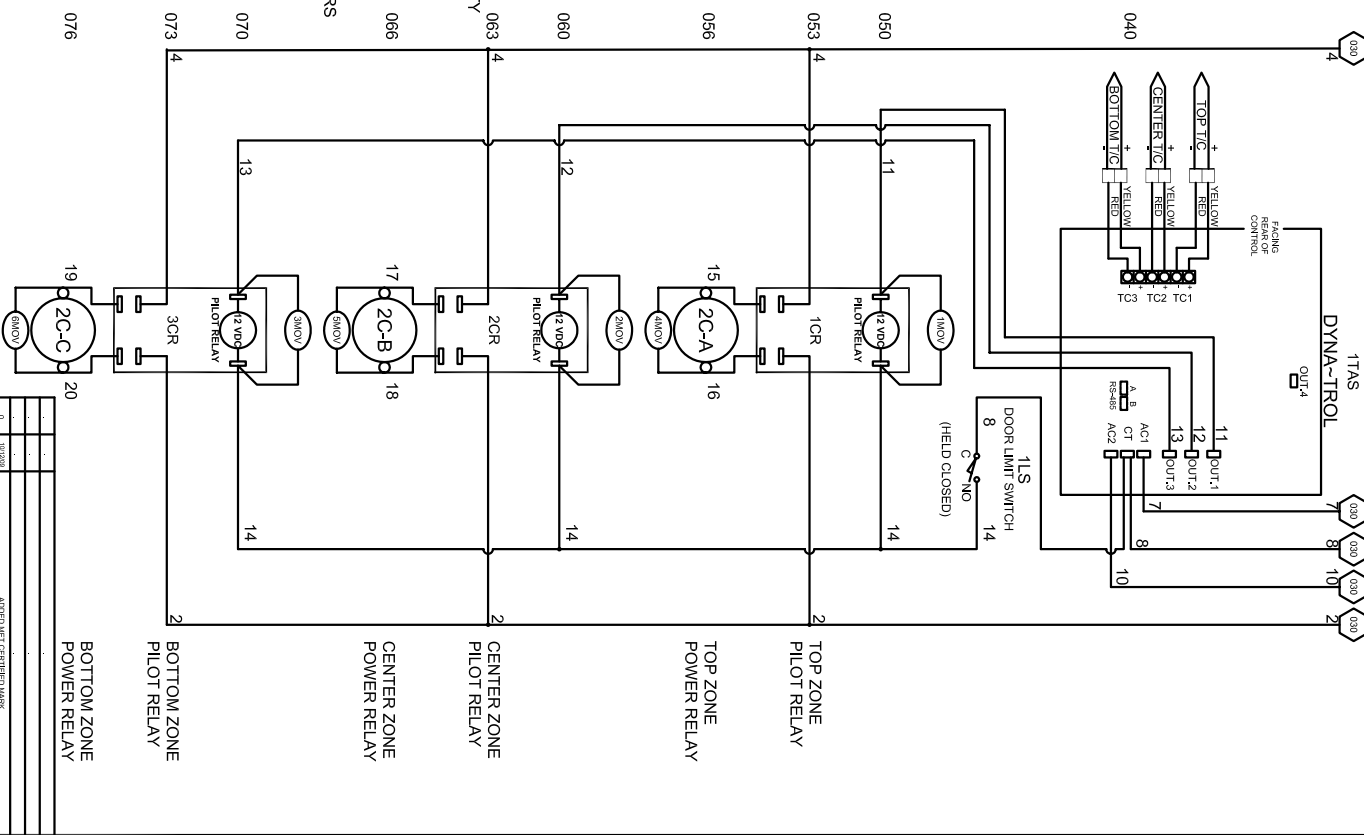
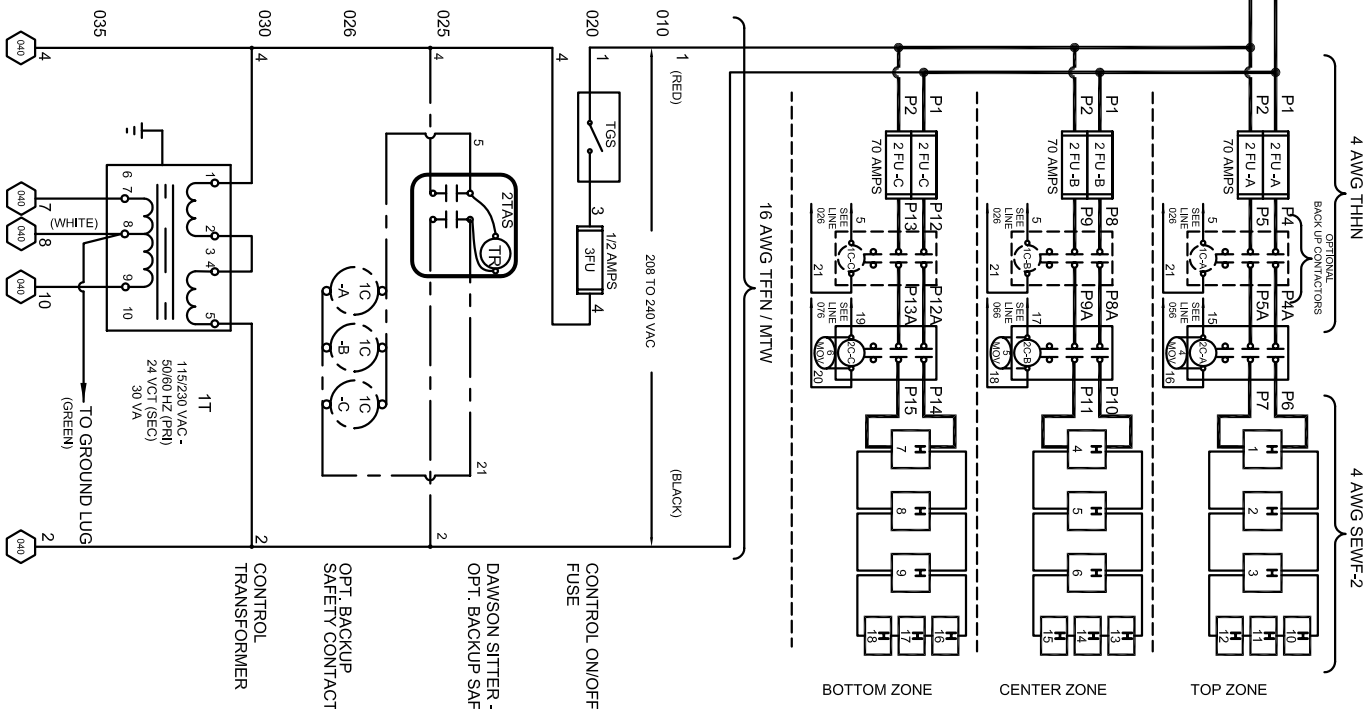
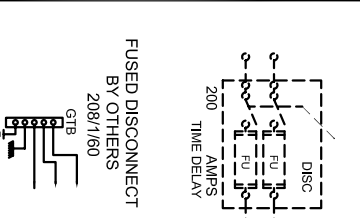




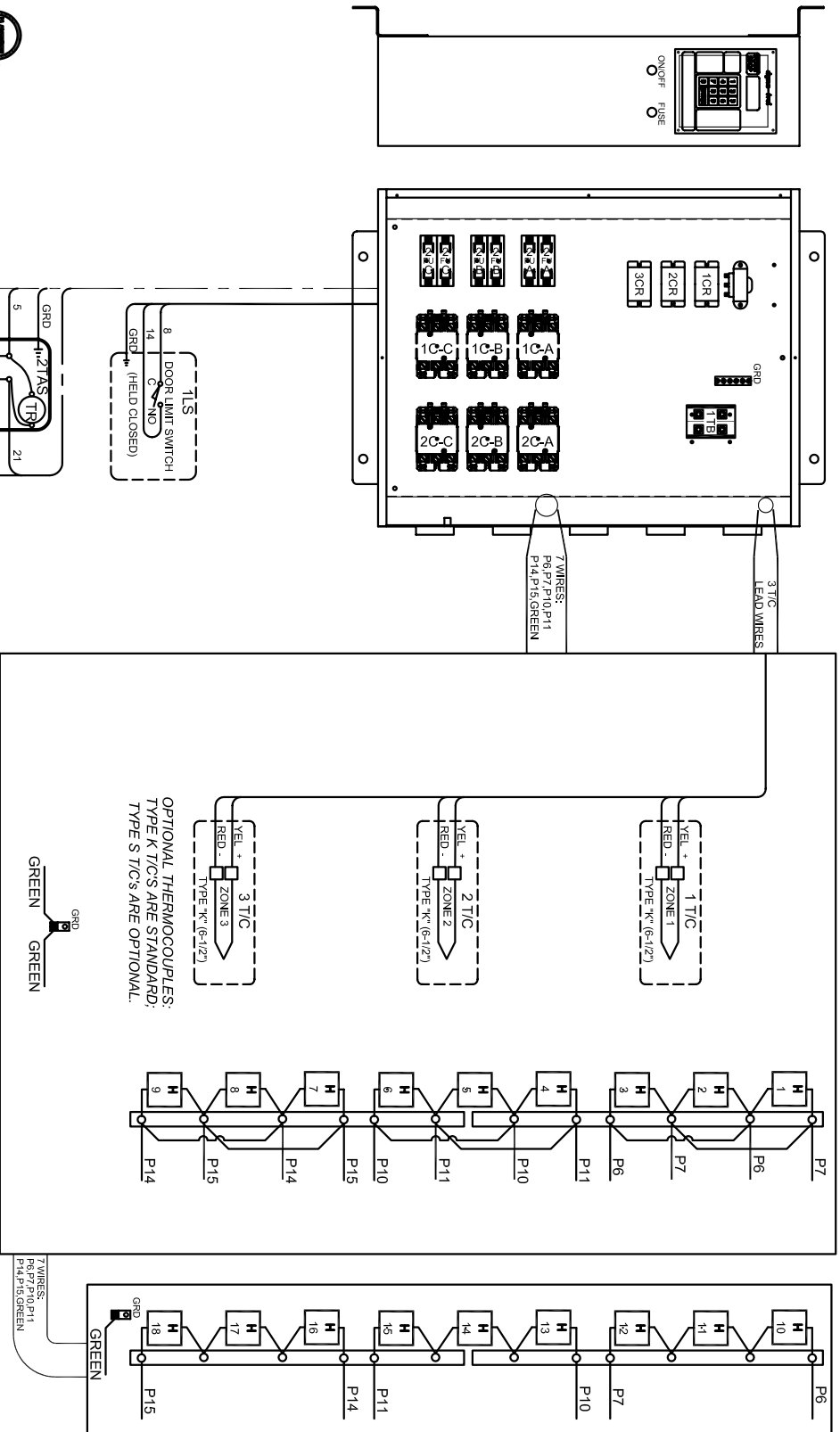
POWER REQUIREMENTS			
VOLTAGE	208 / 1 / 60		
H.P.	N/A		
FULL LOAD AMPS	L1 152 L2 152 L3 152		

**SAFETY SWITCH BY CUSTOMER**  
 Connect to 208 Volt, 1 Phase  
 50 or 60 Cycles.  
**SEE POWER REQUIREMENT TABLE**



REV.#	DATE	APPROVED	REVISION DESCRIPTION
0			

- NOTES**
- 1) All electrical feeders & equipment will be supplied & installed by the customer. Meeting requirements set by the local & national electrical code standards. L & L recommends any such installation be approved by a certified electrical inspector.
  - 2) For kilns not equipped with a fused safety disconnect switch, L & L recommends the customer to install such equipment within 6 feet of operating furnace.
  - 3) Industrial & commercial applications may require the installation of a LOCKOUT/TAGOUT device to meet safety & maintenance requirements.
  - 6) Wire gauge and insulation of Power Wires and Control Circuit Wires are as marked.
  - 7) Power Wire Color is Black, and wires are numbered as marked.
  - 8) Control Circuit Wires are numbered as marked, and colors are:  
 RED = 1, 3-5, 7-13, 15, 17, 19. (WIRE NOS 6 & 9 NOT USED)  
 BLACK = 2, 16, 18, 20, 21.  
 WHITE = 8, 14.  
 GREEN = GROUNDING AND BONDING WIRES.



**MEET US**  
 UL 499

**35057-4-21** SHEET OF **2/2** REV **0**

**L & L SPECIAL FURNACE CO. INC.**

20 YEARS OF SERVICE  
 1967-2007

**MODEL EL 3048 WIRING DIAGRAM**  
**208 Vac/1/60 - DYNA-TROL**

**DAWSON KILN SITTER/TIMER (OPTIONAL)**

SCALE **1 = 10**

DATE **1/18/06**

DRAWN BY **RLC**

FILE NAME **L\EL\EL3048\35057-4-21.dwg**

MADE FROM **\35057-4-22**

APPROVED FOR CONSTRUCTION

REVISION DESCRIPTION

REV.#	DATE
0	Initial