

SAFETY SWITCH BY CUSTOMER
Connect to 220 Volt, 1 Phase
50 or 60 Cycles.
SEE POWER
REQUIREMENT TABLE

POWER REQUIREMENTS			
VOLTAGE	220 / 1 / 60		
KW	15		
H.P.	N/A		
FULL LOAD AMPS	L1	L2	L3
	69	69	1 ~



DRAWING NO. 350571-41

SHEET OF 1/2



REV 0

L & L SPECIAL FURNACE CO. INC. MODEL E 2424 WIRING DIAGRAM 220 Vac/1/60 - DYNA-TROL

TITLE

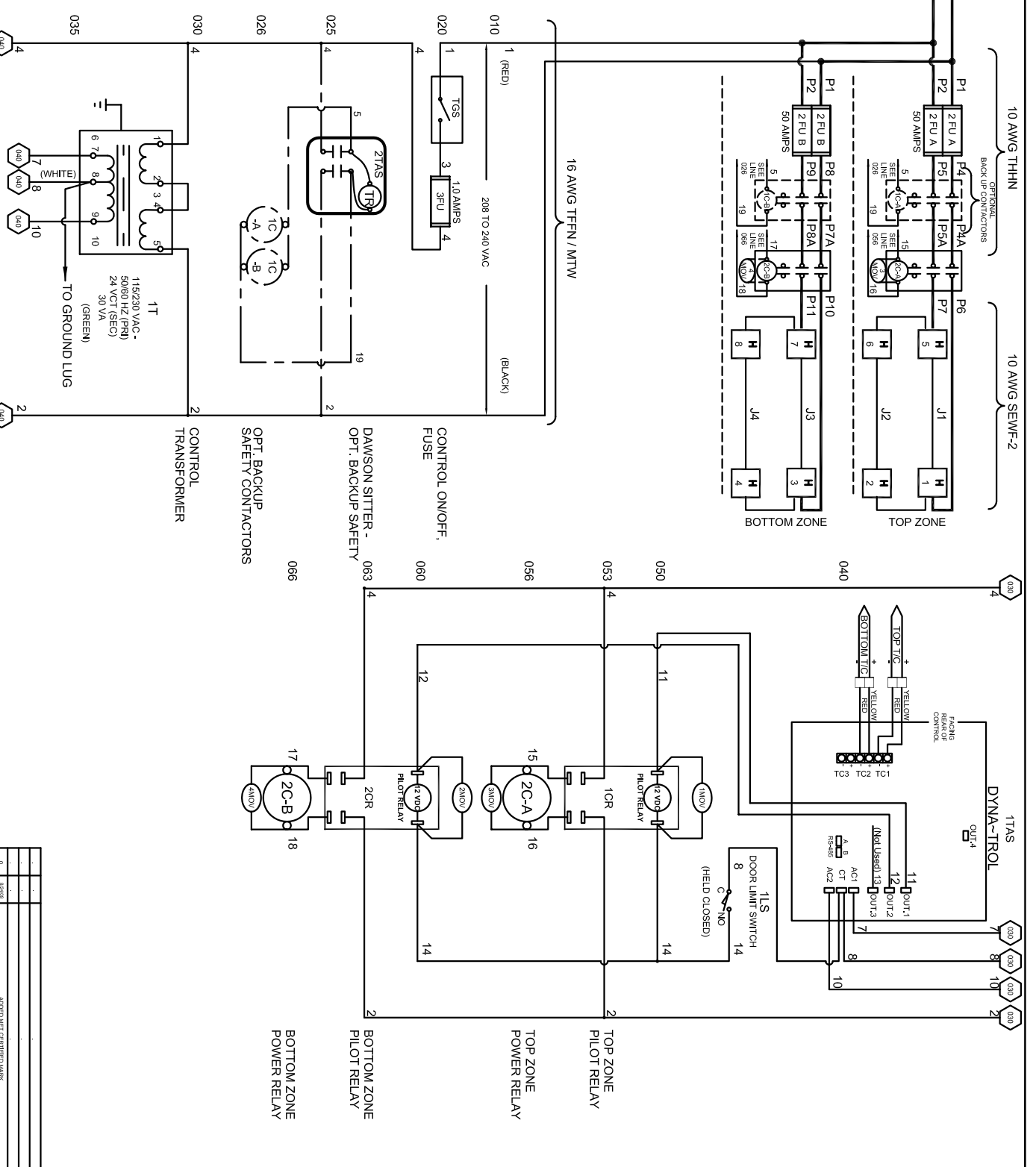
SCALE 1 = 10

DATE 1/17/06

DRAWN BY RLC

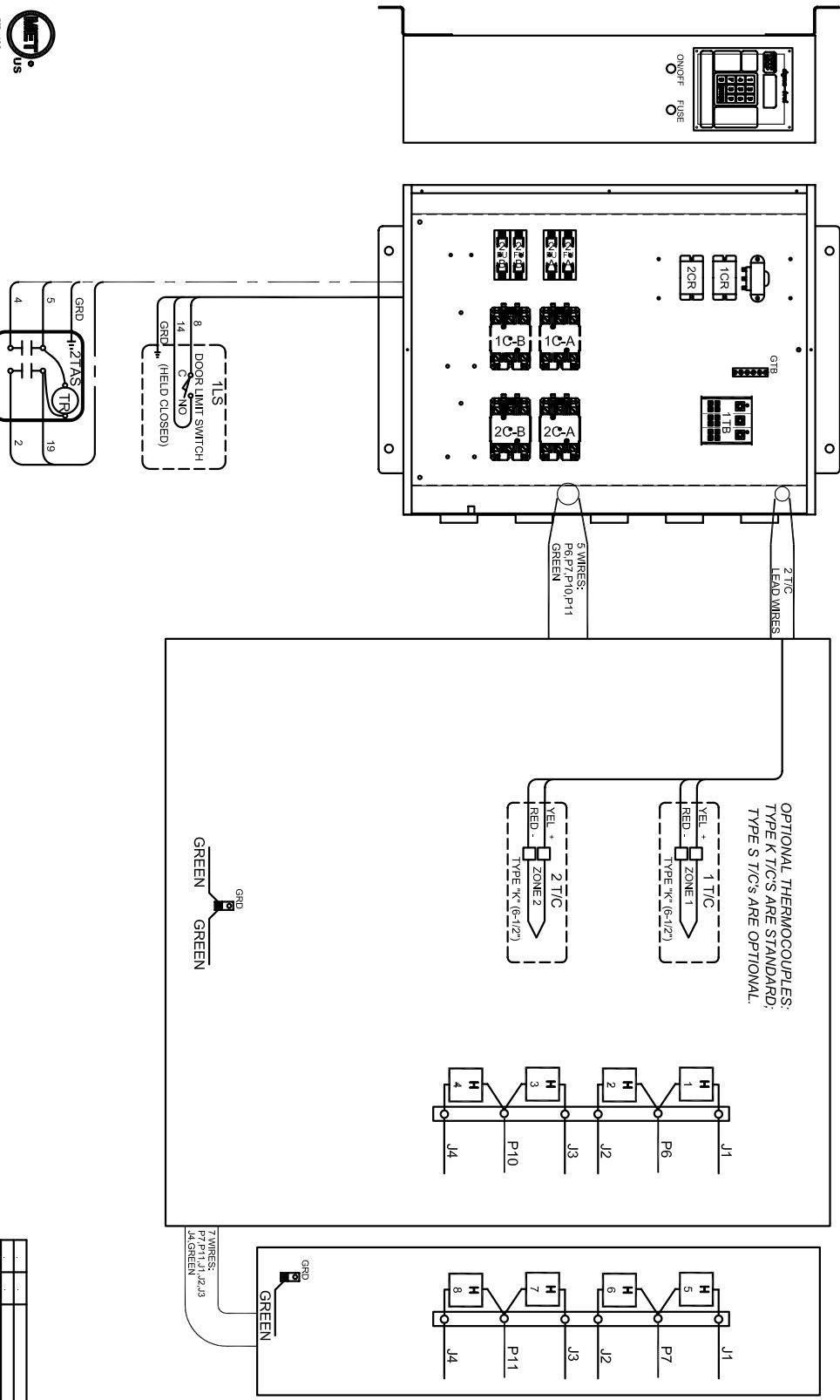
FILE NAME L:\FURN\E2424 350571-41

MADE FROM \350571-21



REV #	DATE	REVISION DESCRIPTION
0		ADDED MET CERTIFICATION
		REVISION DESCRIPTION

- NOTES**
- 1) All electrical feeders & equipment will be supplied & installed by the customer. Meeting requirements set by the local & national electrical code standards. L & L recommends any such installation be approved by a certified electrical inspector.
 - 2) For kilns not equipped with a fused safety disconnect switch, L & L recommends the customer to install such equipment within 6 feet of operating furnace.
 - 3) Industrial & commercial applications may require the installation of a LOCKOUT/TAGOUT device to meet safety & maintenance requirements.
 - 6) Wire gauge and insulation of Power Wires and Control Circuit Wires are as marked.
 - 7) Power Wire Color is Black, and wires are numbered as marked.
 - 8) Control Circuit Wires are numbered as marked, and colors are:
 RED = 1, 3, 6, 8-11.
 BLACK = 2.
 WHITE = 7, 12.
 GREEN = GROUNDING AND BONDING WIRES.



MEET US
UL 499

DRAWING NO. **350571-41** SHEET OF **2/2** REV. **0**

L & L SPECIAL FURNACE CO. INC.

30 YEARS OF SERVICE
1963-2023

TITLE **MODEL EL 2424 WIRING DIAGRAM**
220 Vac/V/60 - DYNA-TROL

SCALE **1 = 10**

DATE **1/17/06**

DRAWN BY **RLC**

FILE NAME **L:\P\EL\EL2424**
350571-41

MADE FROM **\350571-21**

REV.#	DATE	REVISION DESCRIPTION
0	Issued	Added MET CERTIFIED MARK