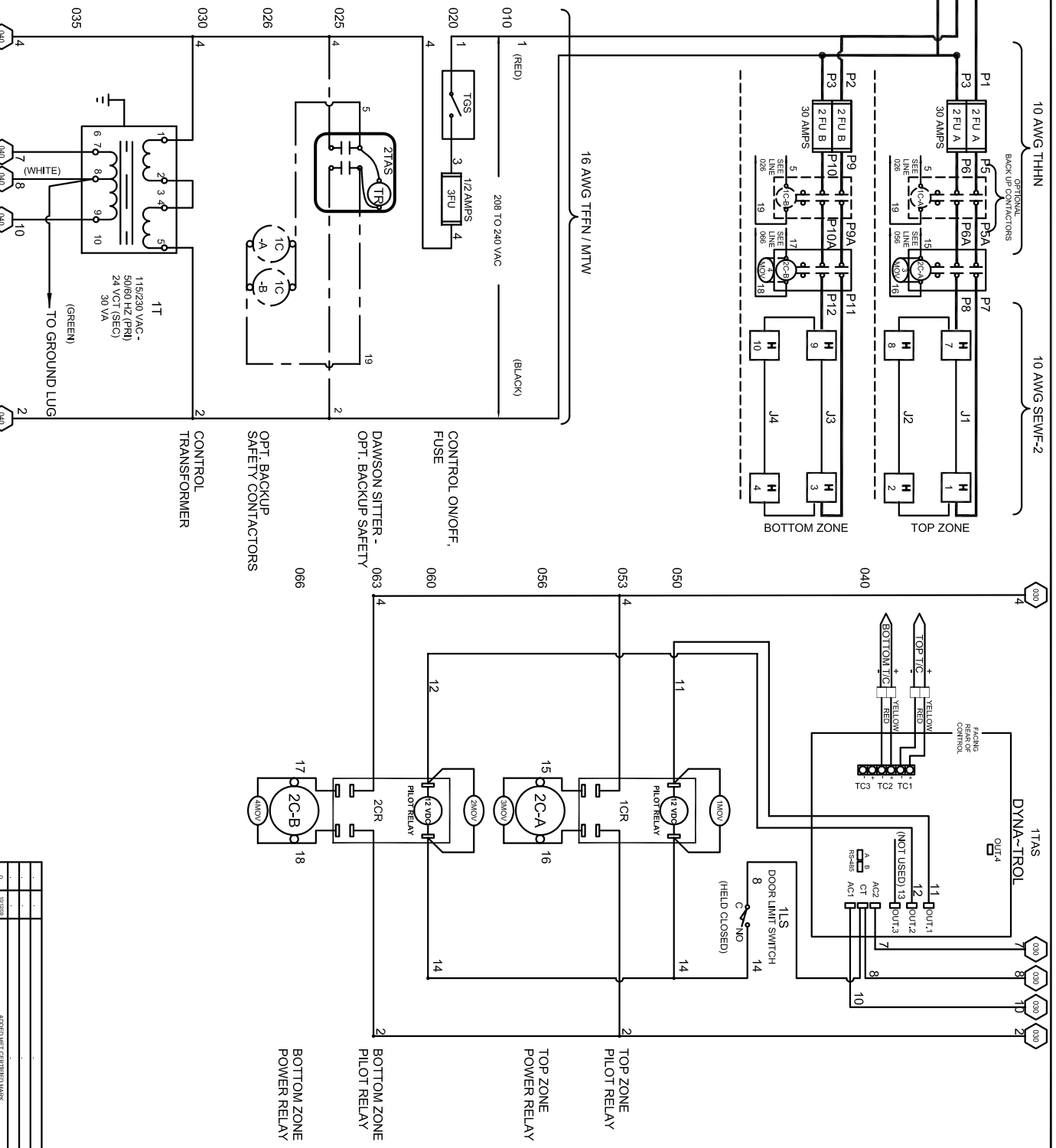


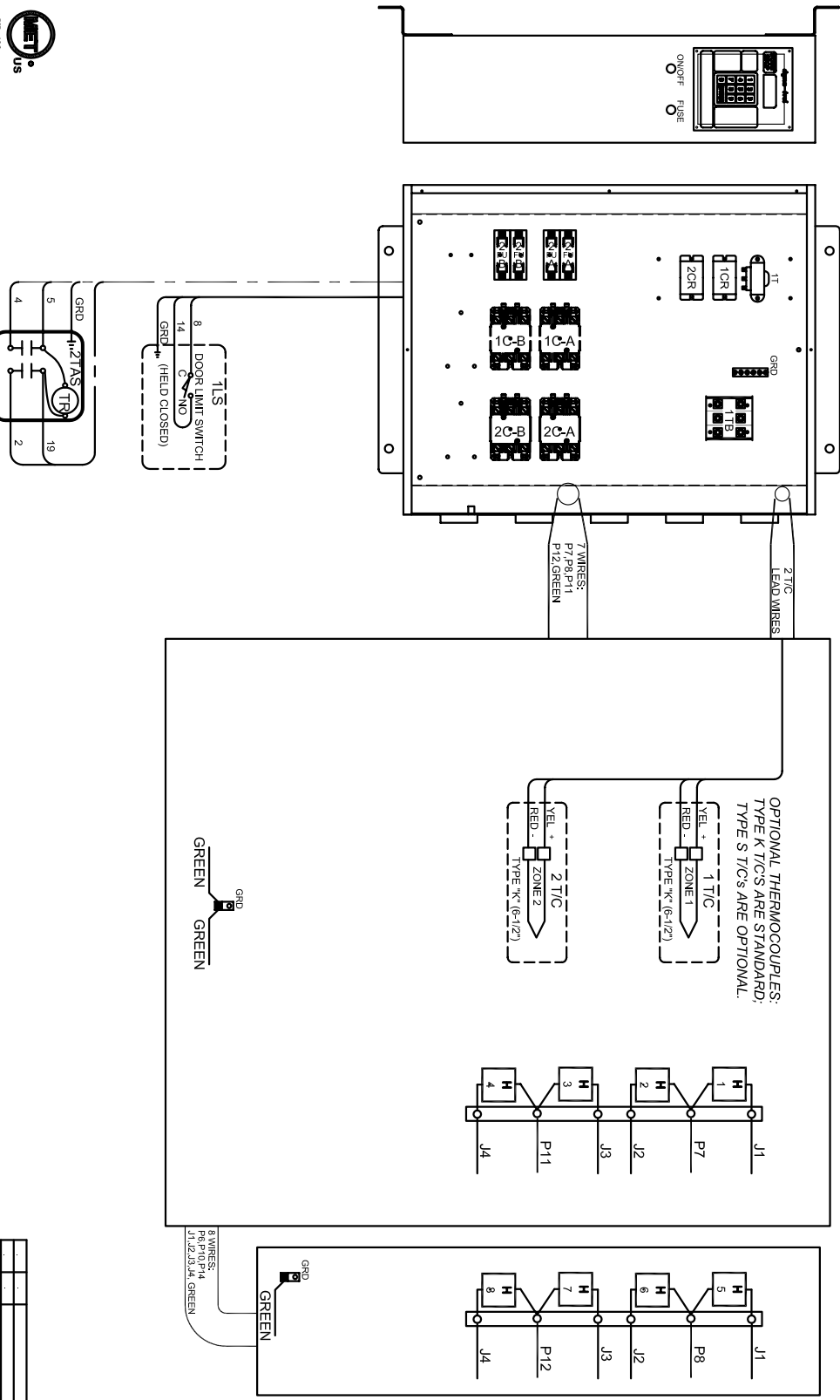
SAFETY SWITCH BY CUSTOMER
 Connect to 380 Volt, 3 Phase
 50 or 60 Cycles.
SEE POWER REQUIREMENT TABLE

POWER REQUIREMENTS		
VOLTAGE	380 / 3 / 60	
KW	10.5	
H.P.	N/A	
FULL LOAD AMPS	L1	L2
	24	24



REV #	DATE	REVISION DESCRIPTION
0		ADDED MET CERTIFICATION

- NOTES**
- 1) All electrical feeders & equipment will be supplied & installed by the customer. Meeting requirements set by the local & national electrical code standards. L & L recommends any such installation be approved by a certified electrical inspector.
 - 2) For Kilns not equipped with a fused safety disconnect switch, L & L recommends the customer to install such equipment within 6 feet of operating furnace.
 - 3) Industrial & commercial applications may require the installation of a LOCKOUT/TAGOUT device to meet safety & maintenance requirements.
 - 6) Wire gauge and insulation of Power Wires and Control Circuit Wires are as marked.
 - 7) Power Wire Color is Black, and wires are numbered as marked.
 - 8) Control Circuit Wires are numbered as marked, and colors are:
 RED = 1, 3, 6, 8, 11, 13, 15, 17.
 BLACK = 2, 14, 16, 18, 19.
 WHITE = 7, 12.
 GREEN = GROUNDING AND BONDING WIRES.



DRAWING NO. **350570-52**

SHEET OF **2/2**

REV. **0**

DATE **1/17/06**

DRAWN BY **DLC**

FILE NAME **L:\P\EL\EL1824\350570-52.dwg**

L & L SPECIAL FURNACE CO., INC.

30 WEST 10TH ST. WYOMING, WY 82001

TITLE **MODEL EL 1824 WIRING DIAGRAM**

SCALE **1 = 10**

DATE **1/17/06**

DRAWN BY **DLC**

MADE FROM **350572-52.dwg**

DAWSON KILN SITTER/TIMER (OPTIONAL)

UL 499

MEET US

REV. #	DATE	ADDITION DESCRIPTION	REVISION DESCRIPTION