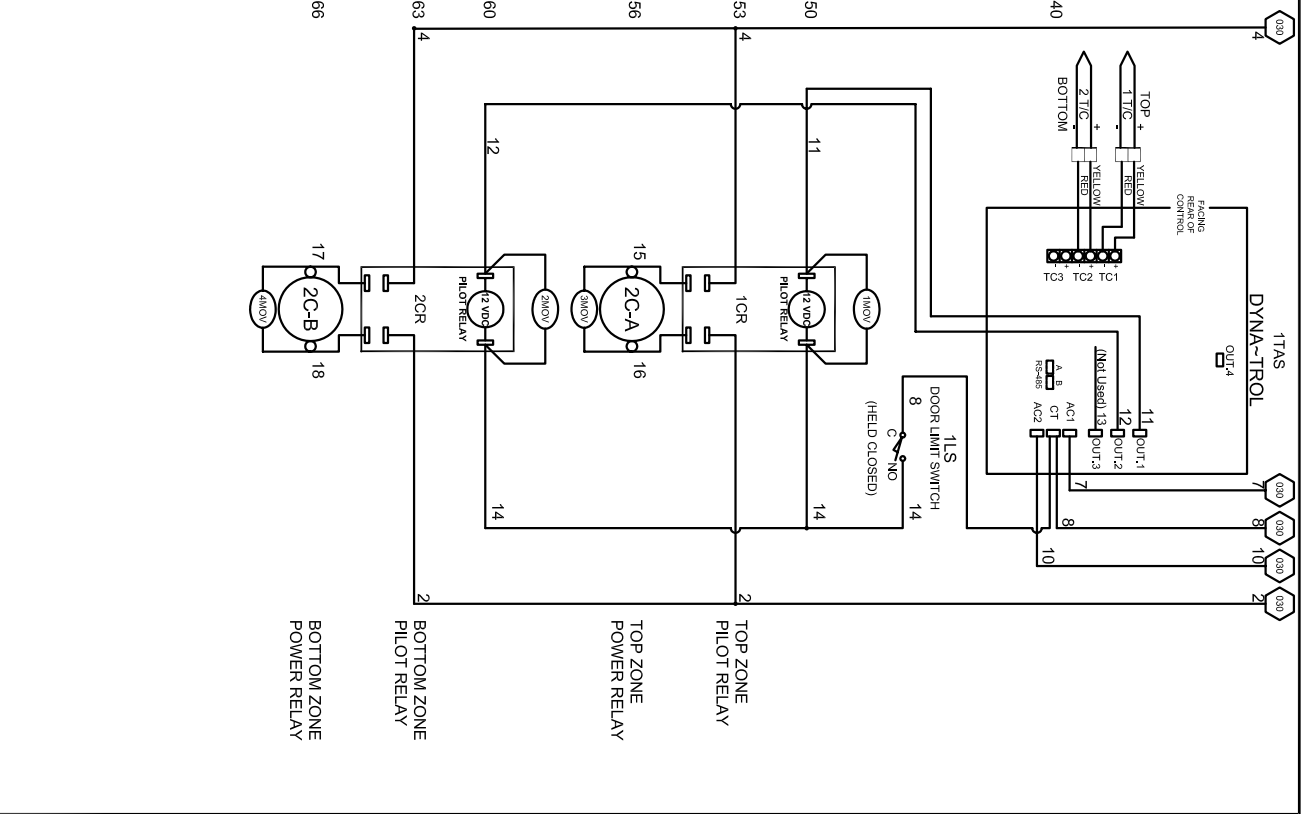
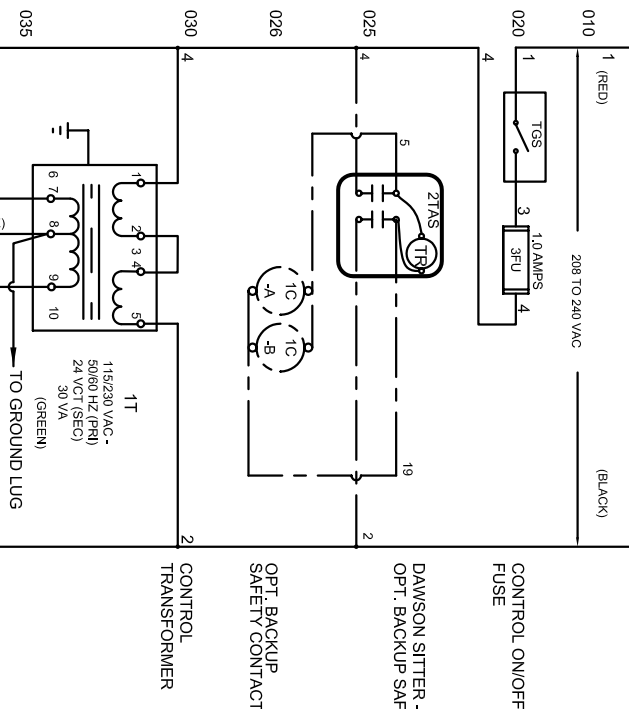
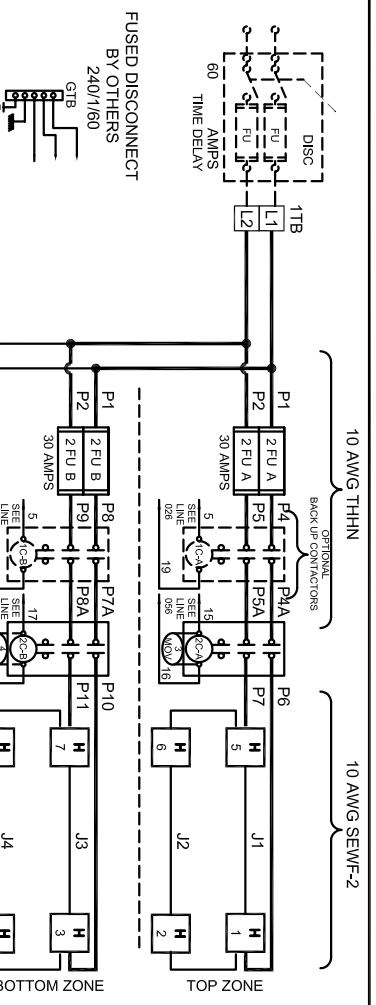


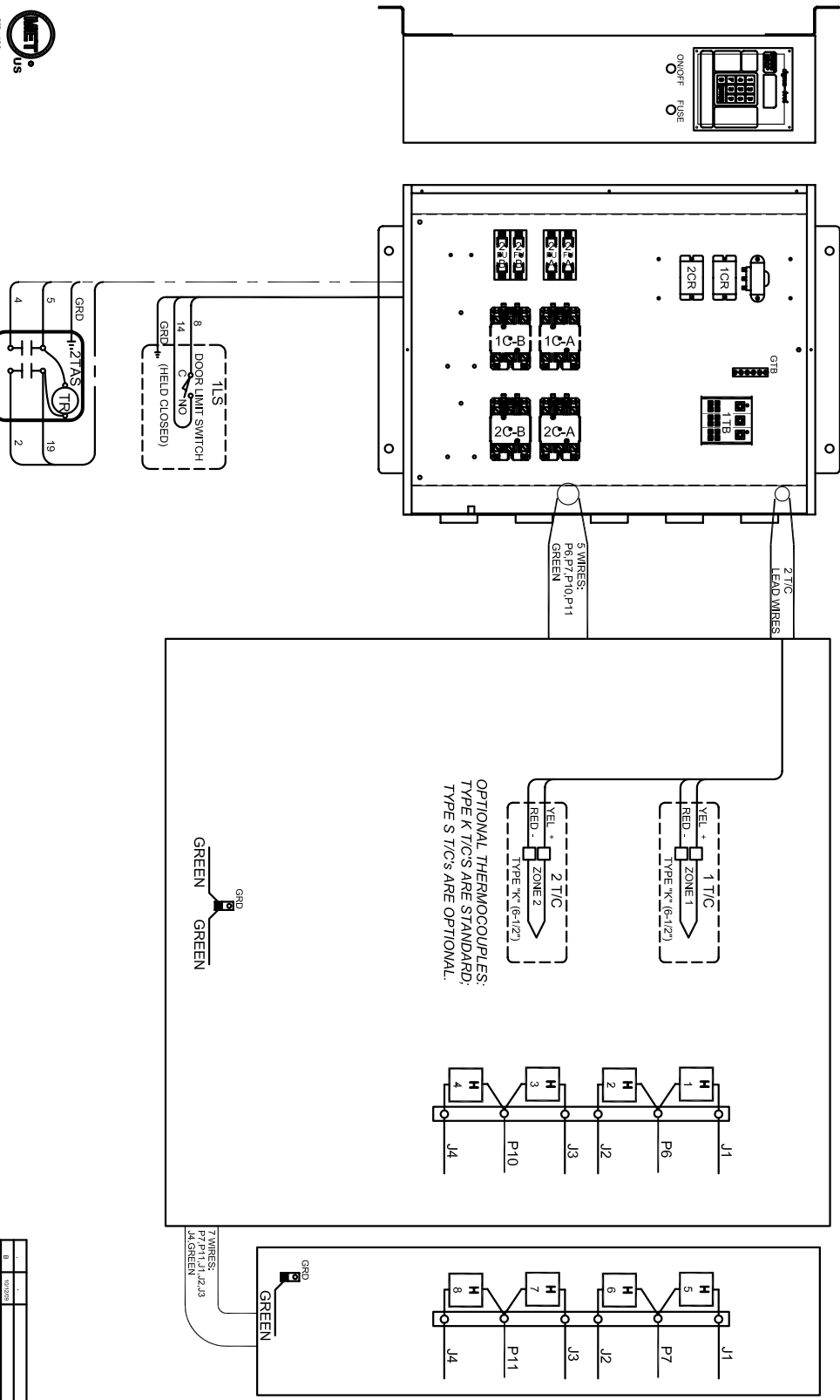
POWER REQUIREMENTS			
VOLTAGE	240 / 1 / 60		
KW	10.5		
H.P.	N/A		
FULL LOAD AMPS	L1	L2	L3
	44	44	1 ~

SAFETY SWITCH BY CUSTOMER
 Connect to 240 Volt, 1 Phase
 50 or 60 Cycles.
 SEE POWER REQUIREMENT TABLE



REV.#	DATE	REVISION DESCRIPTION
1	12/05	ISSUE AS BUILT CHANGES
2	12/05	ISSUE AS BUILT CHANGES
3	12/05	ISSUE AS BUILT CHANGES
4	12/05	ISSUE AS BUILT CHANGES
5	12/05	ISSUE AS BUILT CHANGES
6	12/05	ISSUE AS BUILT CHANGES
7	12/05	ISSUE AS BUILT CHANGES
8	12/05	ISSUE AS BUILT CHANGES
9	12/05	ISSUE AS BUILT CHANGES
10	12/05	ISSUE AS BUILT CHANGES

- NOTES**
- 1) All electrical feeders & equipment will be supplied & installed by the customer. Meeting requirements set by the local & national electrical code standards. L & L recommends any such installation be approved by a certified electrical inspector.
 - 2) For kilns not equipped with a fused safety disconnect switch, L & L recommends the customer to install such equipment within 6 feet of operating furnace.
 - 3) Industrial & commercial applications may require the installation of a LOCKOUT/TAGOUT device to meet safety & maintenance requirements.
 - 6) Wire gauge and insulation of Power Wires and Control Circuit Wires are as marked.
 - 7) Power Wire Color is Black, and wires are numbered as marked.
 - 8) Control Circuit Wires are numbered as marked, and colors are:
 RED = 1, 3, 6, 8-11.
 BLACK = 2,
 WHITE = 7, 12.
 GREEN = GROUNDING AND BONDING WIRES.



DAWSON KILN SITTER/TIMER (OPTIONAL)



UL 499

DRAWING NO.	SHEET OF	REV.	TITLE	SCALE	DATE	DRAWN BY	FILE NAME	MADE FROM
350570-31	2/2	B	L & L SPECIAL FURNACE CO. INC. MODEL EL 1824 WIRING DIAGRAM 240 Vac/1/60 - DYNA-TROL	1 = 10	5/19/05	GDJ	L:\P\EL\EL1824 350570-31	350570-21

REV.#	DATE	REVISION DESCRIPTION
1	7/26/05	WIRE GAUGE CHANGES
2		WIRE GAUGE CHANGES
3		WIRE GAUGE CHANGES
4		WIRE GAUGE CHANGES
5		WIRE GAUGE CHANGES
6		WIRE GAUGE CHANGES
7		WIRE GAUGE CHANGES
8		WIRE GAUGE CHANGES
9		WIRE GAUGE CHANGES
10		WIRE GAUGE CHANGES