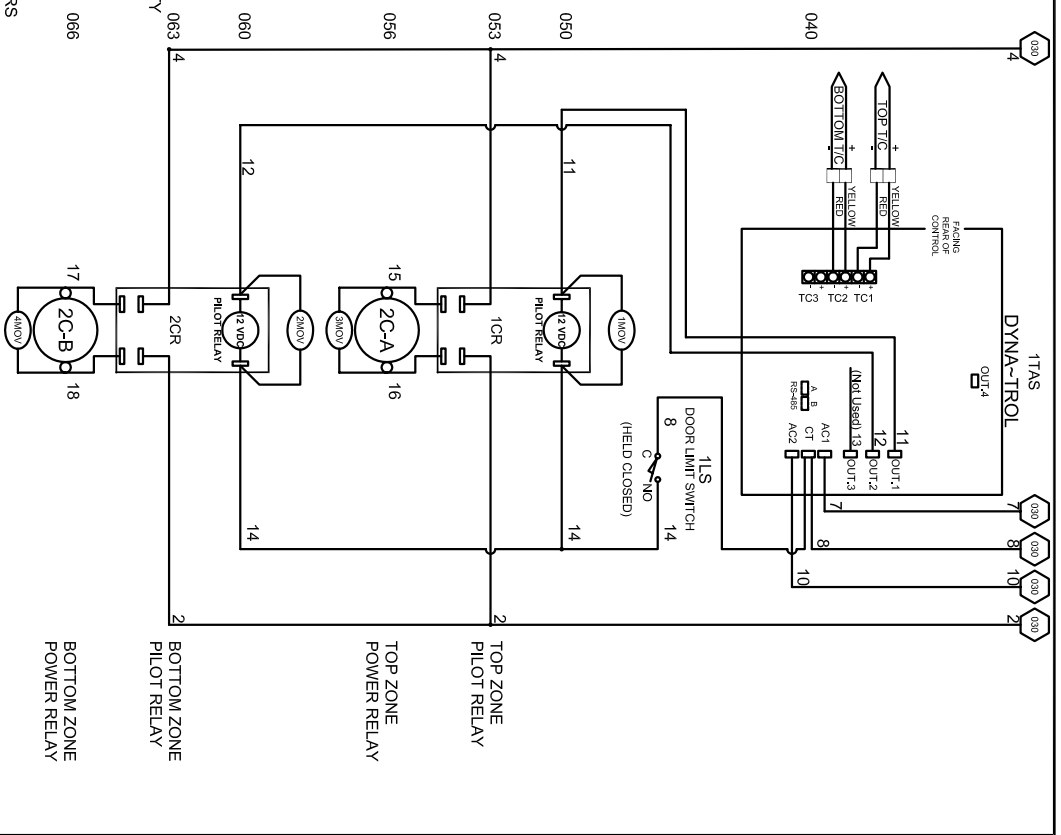
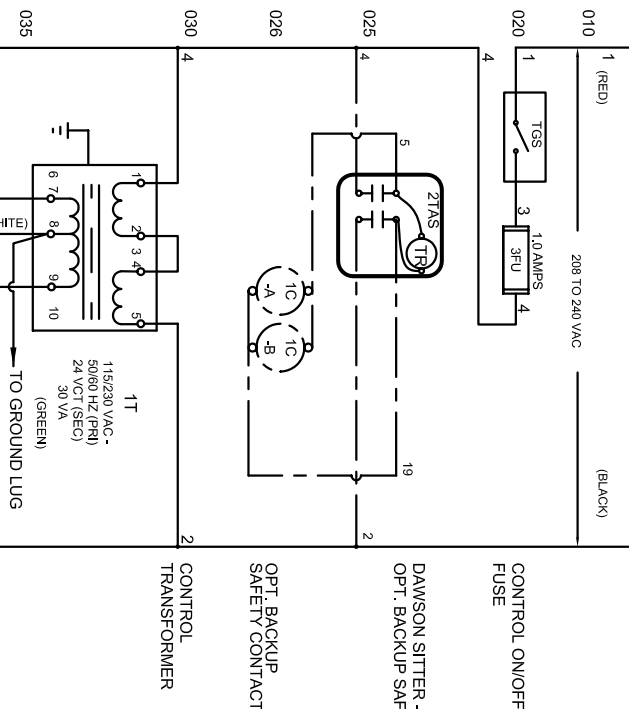
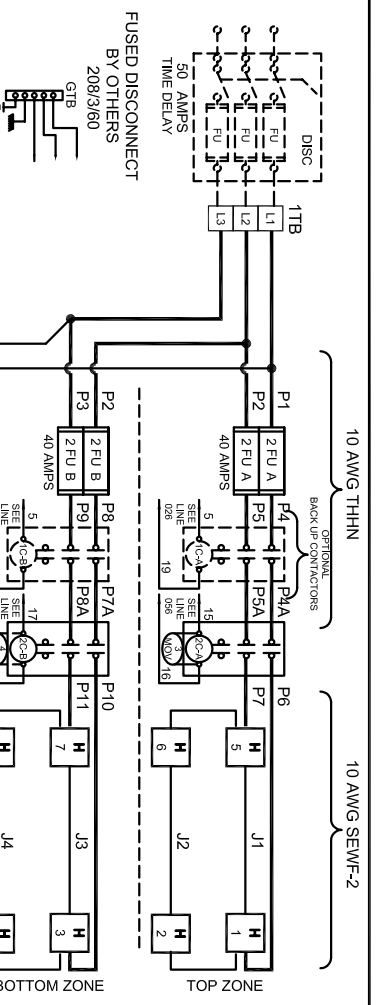


POWER REQUIREMENTS			
VOLTAGE	208 / 3 / 60		
KW	10.5		
H.P.	N/A		
FULL LOAD AMPS	L1	L2	L3
	26	44	26

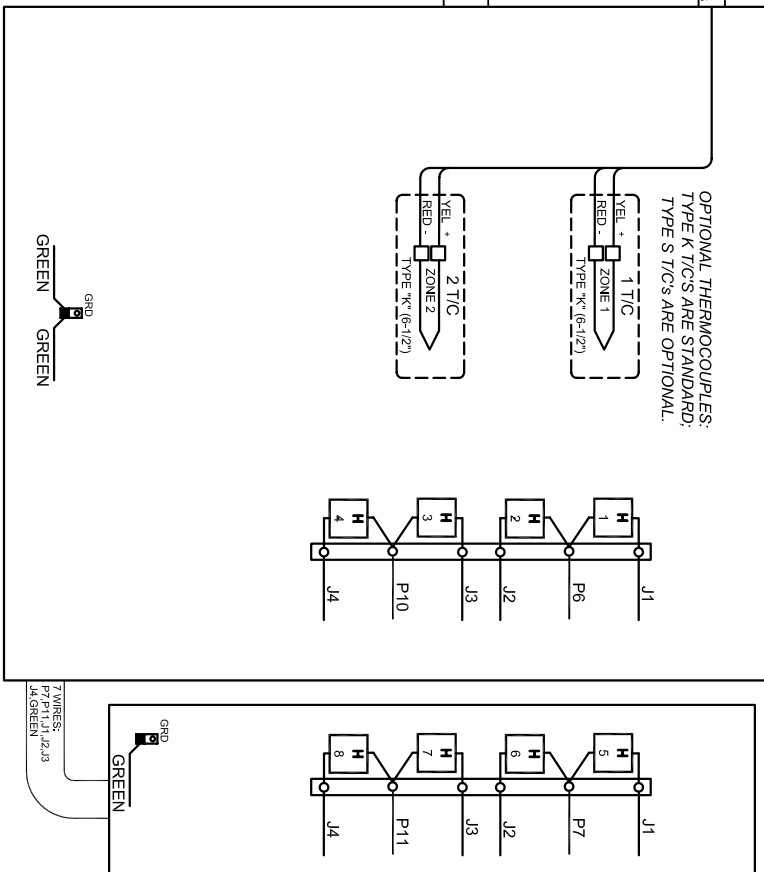
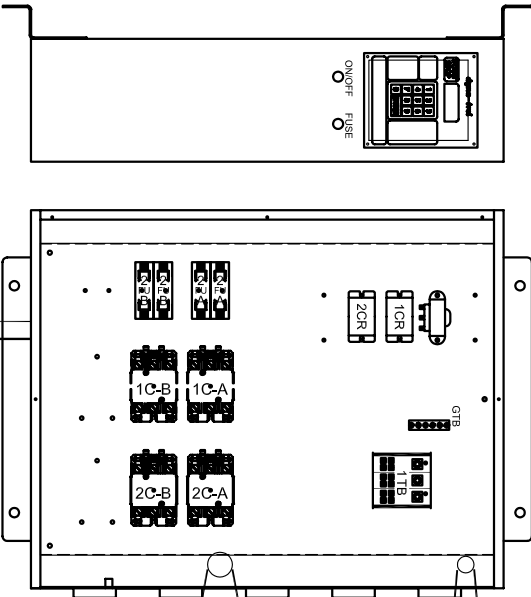
SAFETY SWITCH BY CUSTOMER
 Connect to 208 Volt, 3 Phase
 50 or 60 Cycles.
SEE POWER REQUIREMENT TABLE



REV.#	DATE	REVISION DESCRIPTION
0		ASSEMBLY CHECKED/WORK
1		ISSUED FOR CONSTRUCTION
2		ISSUED FOR CONSTRUCTION
3		ISSUED FOR CONSTRUCTION
4		ISSUED FOR CONSTRUCTION
5		ISSUED FOR CONSTRUCTION
6		ISSUED FOR CONSTRUCTION
7		ISSUED FOR CONSTRUCTION
8		ISSUED FOR CONSTRUCTION
9		ISSUED FOR CONSTRUCTION
10		ISSUED FOR CONSTRUCTION



UL-499



- NOTES**
- 1) All electrical feeders & equipment will be supplied & installed by the customer. Meeting requirements set by the local & national electrical code standards. L & L recommends any such installation be approved by a certified electrical inspector.
 - 2) For kilns not equipped with a fused safety disconnect switch, L & L recommends the customer to install such equipment within 6 feet of operating furnace.
 - 3) Industrial & commercial applications may require the installation of a LOCKOUT/TAGOUT device to meet safety & maintenance requirements.
 - 6) Wire gauge and insulation of Power Wires and Control Circuit Wires are as marked.
 - 7) Power Wire Color is Black, and wires are numbered as marked.
 - 8) Control Circuit Wires are numbered as marked, and colors are:
 RED = 1, 3, 6, 8-11.
 BLACK = 2.
 WHITE = 7, 12.
 GREEN = GROUNDING AND BONDING WIRES.

DRAWING NO.	SHEET OF	REV	TITLE	SCALE	DATE	DRAWN BY	FILE NAME	MADE FROM
350570-22	2/2	B	MODEL EL 1824 WIRING DIAGRAM 208 Vac/3/60 - DYNA-TROL	1 = 10	9/2/04	GDJ	L:\P\EL\1824\350570-22	\350570-32

REV	DATE	REVISION DESCRIPTION
0		ISSUE
1		ISSUE
2		ISSUE
3		ISSUE
4		ISSUE
5		ISSUE
6		ISSUE
7		ISSUE
8		ISSUE
9		ISSUE
10		ISSUE

DAWSON KILN SITTER/TIMER (OPTIONAL)

APPROVED FOR CONSTRUCTION
 MET US
 APPROVED FOR CONSTRUCTION
 MET US