



POTTERS CATALOG





Matt Horne
Crystalline Ceramics
MattHornePottery.co.uk



A Legacy of Craftsmanship Since 1946

Founded in 1946, L&L Kiln Mfg is proud to be the oldest consumer and school kiln manufacturer in the United States. For 80 years, we have focused exclusively on designing the world's most durable and reliable electric kilns. Through innovative engineering, exceptional customer support, and easy-to-maintain designs, we deliver lasting value and consistent performance you can trust for years.



WHAT L&L CUSTOMERS SAY



Karrita Renzelmann

QueenBeePottery.com / ClayStamps.etsy.com

"After researching and comparing many manufacturers to find the best kiln for my studio needs, I'm happy to share that my new L&L Kiln has exceeded all of my expectations!"



Johanie Bernard

atelierbernard.com

"I rely on my L&L kiln every day. Its unmatched reliability and thoughtful design make it an essential tool. Whether I'm testing a new glaze or firing a big production run, it's a kiln I know I can count on to get the job done right. L&L kilns aren't just tools - they're partners in craftsmanship."



Masa Sasaki

MasaSasakiCeramics.com

"Close to 400 firings and the kiln has been exceptionally reliable. With the special element holders, replacing elements are as easy as changing a light bulb. I highly recommend this kiln for any working ceramic artist."



Matt Horne

MattHornePottery.co.uk

"L&L kilns have been a game changer for my crystalline glaze firings. They offer superior control, with the element holders making maintenance so much easier."



Lisa Orr

etsy.com/shop/LisaOrrPottery

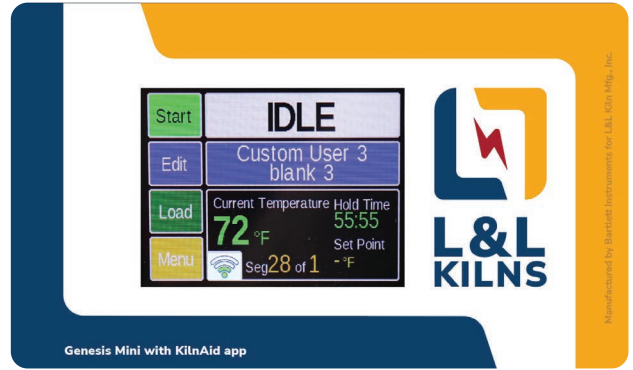
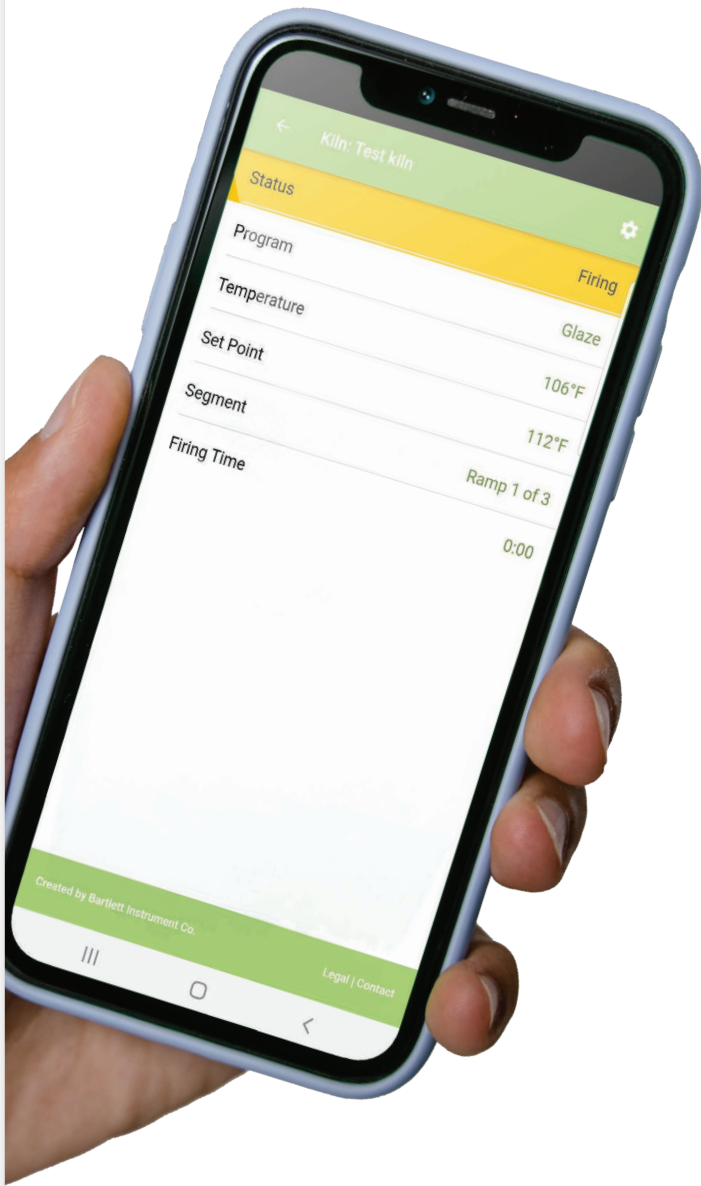
"Zone control allows me to keep loss to a bare minimum, as my bisque and glaze firings each need to reach their precise temperatures throughout the entire kiln to work well. Not only that, but I am able to control the cooling to achieve the glittery aventurine crystalline growth I love in my amber glazes. LOVE the firing accuracy top to bottom that make my clay and glaze combination a success in L&L kilns!"



Johanie Bernard
atelierbernard.com

TOUCH SCREEN INCLUDED ON ALL MODELS

Simply download the Bartlett Kiln Aid app from your Google Play or Apple App Store, add your kiln, and begin monitoring your kiln from anywhere!



GENESIS MINI Touch Screen Control

Genesis Touch Screen Control with Kiln Aid app

NOW INCLUDED ON ALL L&L KILNS

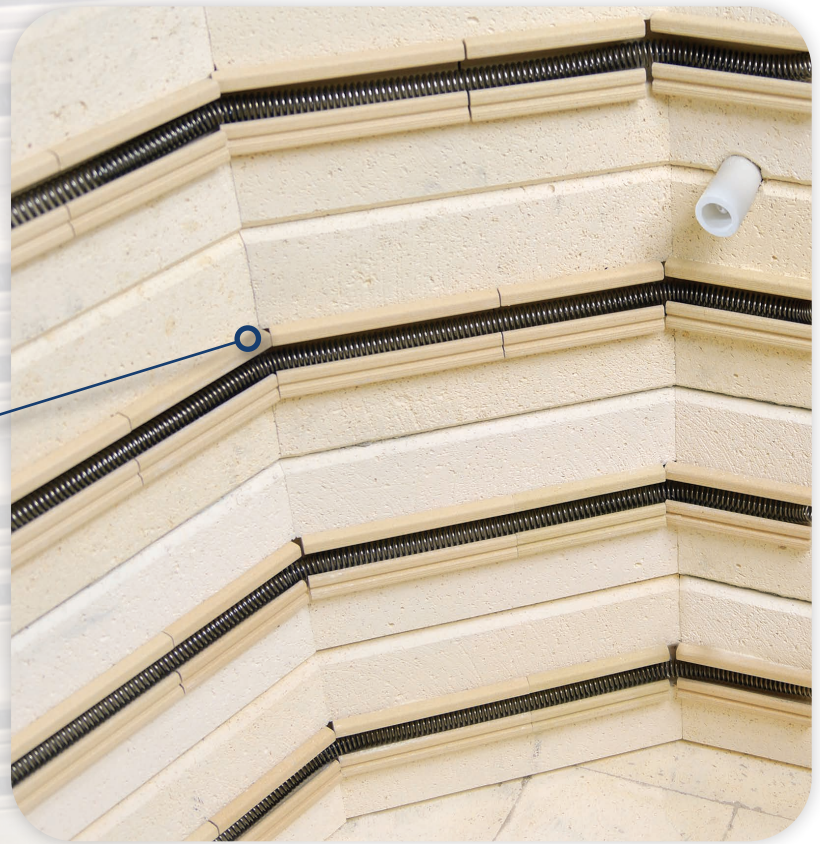


Fastest Element Change In The Industry

Ceramic Element Holders



Protect Your Brick



Enhances Heat Distribution
& Protects Soft Brick

See How Easy!

Video: *Changing Elements*



hotkilns.com/change-elements-ez



Ceramic Element Terminals
No Crimping or Special Tools

Ease of Maintenance

Element Holders Make Replacing Elements Quick & Easy



Easy-Access Control Panel

- Organized with numbered wires
- Designed to run cool



SEE FEATURES AT:

[hotkilns.com
/pottery-kiln-and-
ceramics-top-features](https://hotkilns.com/pottery-kiln-and-ceramics-top-features)



Spend More Time Creating, Less Time Maintaining



EASY-FIRE KILNS



EASY-FIRE KILNS

Pottery Kilns



- **Genesis Touch Screen Control** • with Kiln Aid app
- **Dynamic Zone Control** • for even firing
- **Hard Ceramic Element Holders** • protect your elements and kiln
- **Cone 10** (2350°F • 1290°C) • most models
- **Type K Thermocouples (2-3)** • with protection tubes
- **3"** • K23 Brick
- **Top Loading** • spring assisted lid (23" & 28" models)
- **Solid, Straight View Peephole Plugs**
- **Full-Support Stand** • rolling option available
- **Easy-Access Control Panel** • with Easy-View tilted display
- **Three-Year Limited Warranty**
- **c-ETL-us listed to UL499 Standards**



This is the classic L&L pottery kiln used by most of our customers. They include all the signature L&L features.



FURNITURE KITS



VENT-SURE VENT SYSTEM



ROLLING STAND



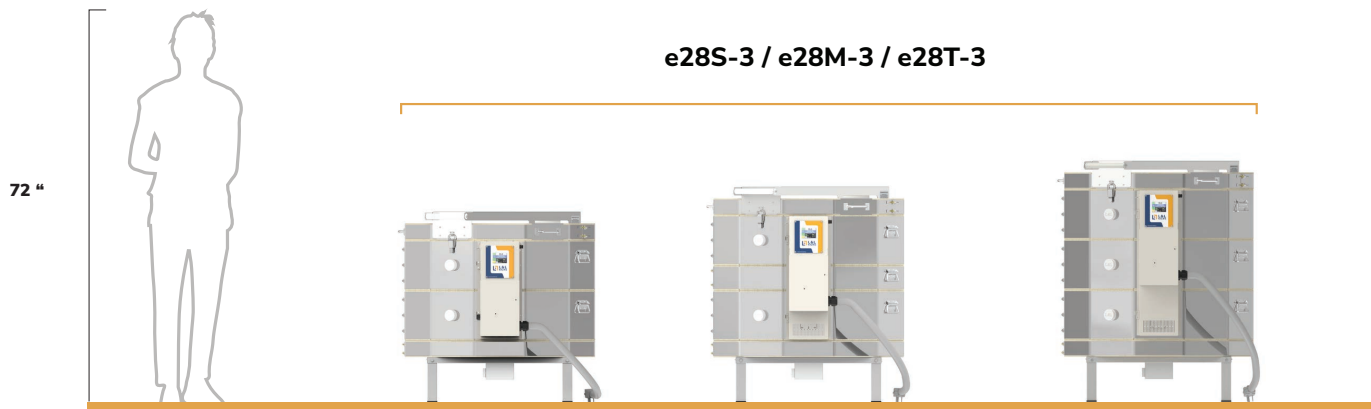
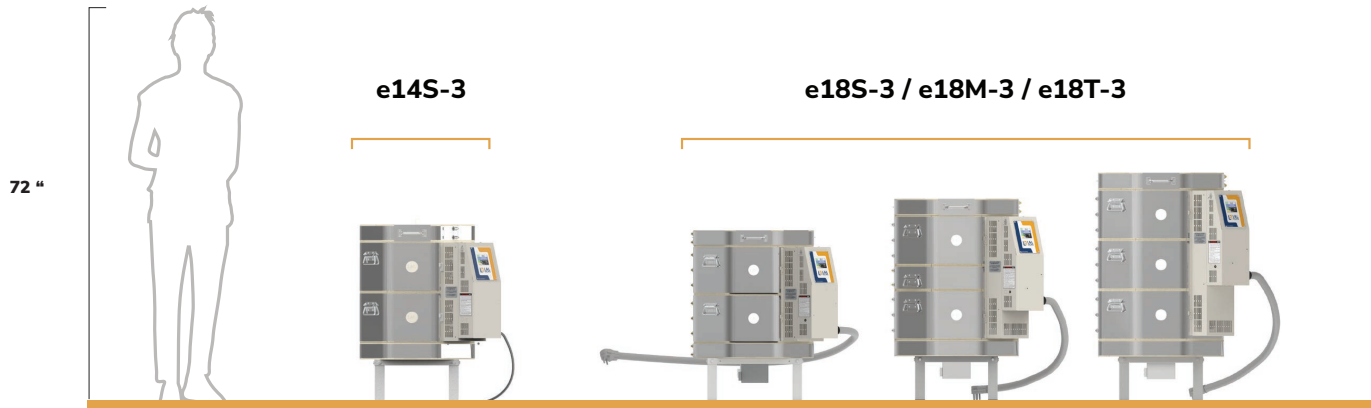
Model No.	Number of Shelves	Inside Diam	Inside Height	Cubic Feet	Exterior Dim (in)	240/1 KW~Amp~Fuse	240/3 KW~Amp~Fuse	208/1 KW~Amp~Fuse	208/3 KW~Amp~Fuse	Lbs Kiln	Lbs w/Kit
e14S-3	12" (3 Full)	13.5"	18"	1.5	23W x 51H x 27D	3.8~16~20	no 3 phase	3.8~18.5~25	no 3 phase	150	175
e18S-3	15" (1F, 4 Half)	16.5"	18"	2.5	28W x 55H x 30D	5.7~23.9~30	5.7~20.7~30	5.0~23.9~30	5.0~20.8~30	235	285
e18M-3	15" (1F, 4 Half)	16.5"	22.5"	3.2	28W x 60H x 30D	8.0~33.3~50	8.0~23.1~30	8.0~38.5~50	8.0~26.6~40	260	310
e18T-3	15" (2F, 4 Half)	16.5"	27"	3.7	28W x 63H x 30D	8.4~35.0~50	8.4~20.2~30	8.4~40.4~60	8.4~23.3~30	280	340
e23S-3	20" (6 Half)	22.3"	18"	4.4	30W x 59H x 40D	9.5~39.4~50	9.5~34.1~50	8.3~40.0~50	8.3~34.6~50	320	395
e23M-3	20" (6 Half)	22.3"	22.5"	5.5	30W x 63H x 40D	11.5~48.0~60	11.5~33.3~50	10.0~48.0~60	11.5~38.4~50	350	425
e23T-3	20" (8 Half)	22.3"	27"	6.7	30W x 68H x 40D	11.5~48.0~60	11.5~27.7~40	10.0~48.0~60	11.0~30.5~40	380	470
e28S-3	25-1/2" (6 Half)	28"	18"	6.8	35W x 65H x 46D	11.5~47.9~60	11.5~41.5~60	10.0~48.0~60	10.0~41.6~60	410	520
e28M-3	25-1/2" (6 Half)	28"	22.5"	8.5	35W x 69H x 46D	11.5~48.0~60	16.6~40.0~50	10.0~48.0~60	14.3~39.8~50	445	555
e28T-3	25-1/2" (8 Half)	28"	27"	10.2	35W x 74H x 46D	11.5~48.0~60	16.6~40.0~50	10.0~48.0~60	14.3~39.8~50	475	610

Cone Rating: All models are rated to Cone 10 except the single phase e28T-3 (rated to Cone 8 at 240V/1 Phase, Cone 5 at 208V/1 Phase, but Cone 10 for any 3 phase kiln) and the e28M-3 (rated at Cone 8 for 208V/1 phase). If planning continuous Cone 6 firings, or above, we recommend the eQuad-Pro eQ2827-3 or the Jupiter JD2927-3 (both have more KW than the e28T-3 in their single phase versions).

Power Hookup: (USA only) 6-50P plug on single phase and 15-50P plug on three phase except for the e14S-3 which has a 6-20P Plug for 240 volt models or a 14-30P Plug for 208 volt models.

UL 499 Listing: c-ETL-us listed to UL499 standards. **CE Listing:** CE Listed models are available.

More: See Easy-Fire Spec Sheets and Dimension Drawings on each kiln page on our website for more details.



Type S Platinum Thermocouples
(T-G-SJUP/UG)

Pyrocil metallic Thermocouples
(T-G-E23M/UG)

Vent-Sure (120 volts)
(M-V-VENT/00)

Vent Doubler
(M-V-VENT/DB)

Vent Control
(M-V-CNTL/00)

Rolling Stand for

7 Sided Kiln (A-J-14RL/00)

8 Sided Kiln (A-J-18RL/00)

10 Sided Kiln ((A-J-23RL/00)

12 Sided Kiln (A-J-29RL/00)

EQUAD-PRO KILNS



EQUAD-PRO KILNS

Super-Duty High Production Kilns



- **Genesis Touch Screen Control** • with Kiln Aid app
- **Dynamic Zone Control** • for even firing
- **Hard Ceramic Element Holders** • protect your elements and kiln
- **Cone 10** (2350°F • 1290°C) • with extra power
- **Type K Thermocouples (3)** • with protection tubes
- **3"** • K23 Brick
- **Top Loading** • spring assisted lid
- **Solid, Straight View Peephole Plugs**
- **Full-Support Stand** • rolling option available
- **Easy-Access Control Panel** • branch fusing included
- **Three-Year Limited Warranty**
- **Quad Element System Comes Standard**
- **c-ETL-us** listed to UL499 Standards



25% Extra power and Quad element system make eQuad-Pro kilns ideal for Production Potters.



FURNITURE KITS



VENT-SURE VENT SYSTEM



ROLLING STAND



Model No.	No. of Shelves All Half Shelves	Inside Diam	Inside Height	Cubic Feet	Exterior Dimensions	240/1 KW-Amp-Fuse	240/3 KW-Amp-Fuse	208/1 KW-Amp-Fuse	208/3 KW-Amp-Fuse	Lbs Kiln	Lbs w/Kit
eQ2327-3	20" (8 Half)	22.3"	27"	6.7	30W x 69H x 40D	13.4~56.0~70	13.4~32.4~50	11.7~56.0~70	11.7~32.4~50	395	485
eQ2827-3	25.5" (8 Half)	28"	27"	10.2	35W x 74H x 49D	15.0~62.3~80	15.0~36.0~50	15.0~71.9~90	15.0~41.5~60	515	650

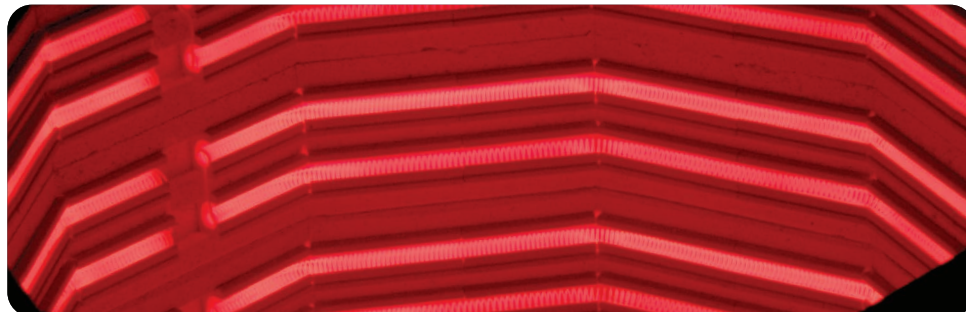
QUAD ELEMENT SYSTEM INCLUDED: Large-diameter, low-watt-density elements mounted in hard ceramic element holders provide increased surface area for more even heat distribution, longer element life, and reliable high-temperature performance.

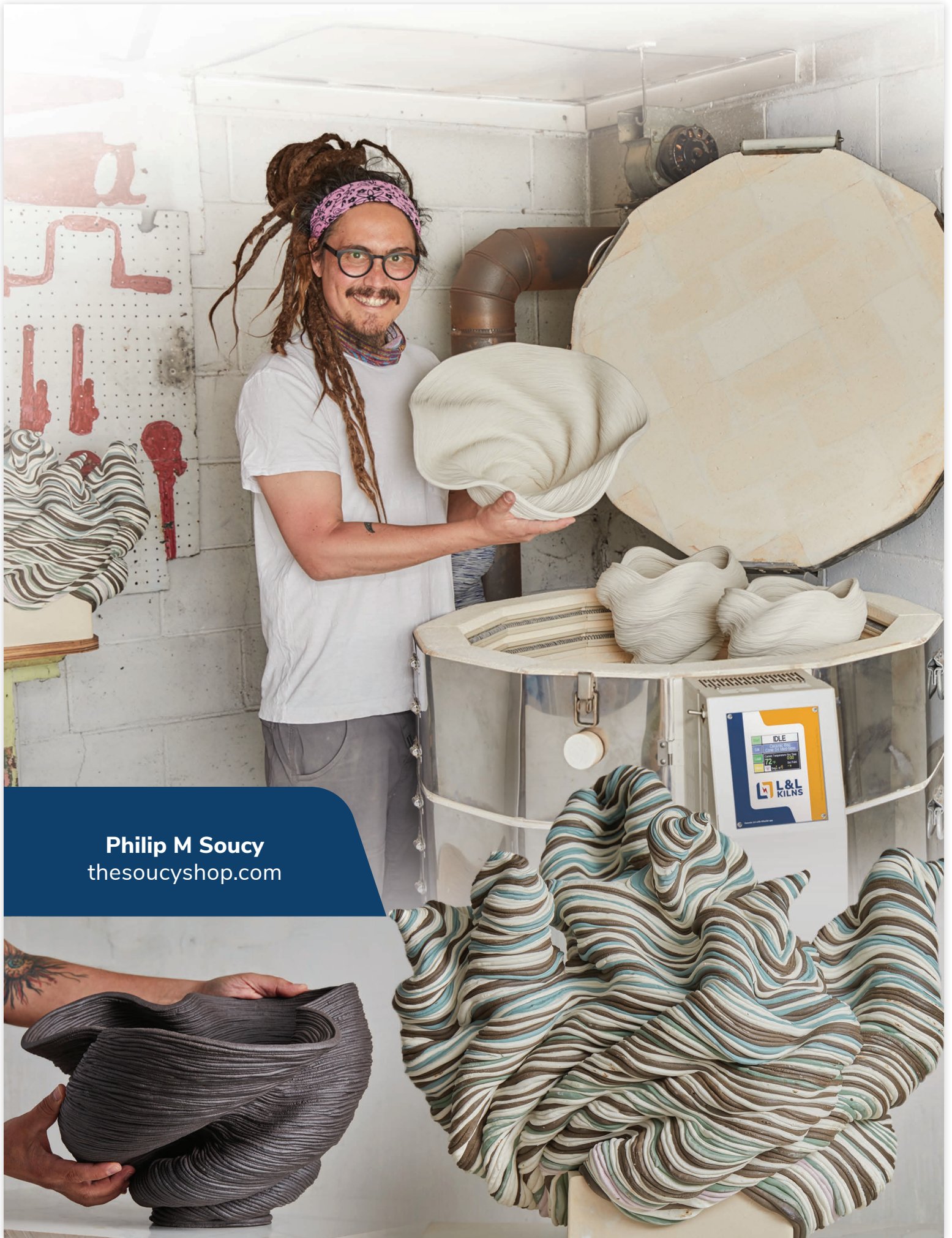
Voltage: Available in 240 or 208 volts, single- or three-phase, as well as select international voltages; no additional charge for voltage options (480 volts not available).

Cone Rating: All models rated for Cone 10 on a production basis due to extra power and Quad elements.

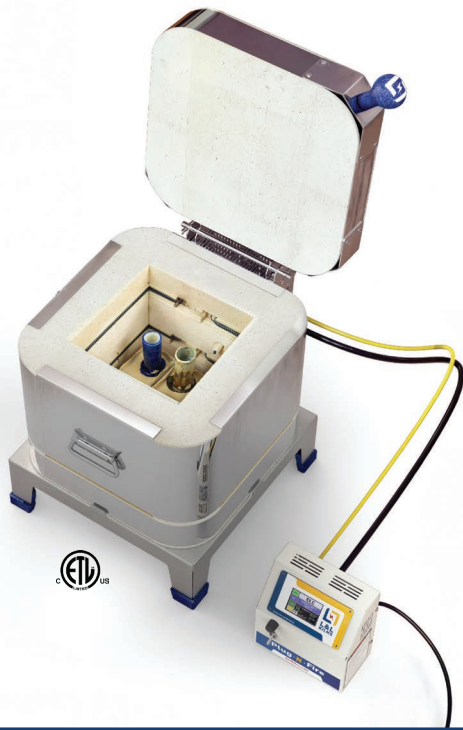
More: See eQuad Spec Sheets and Dimension Drawings on each kiln page on our website for more details. **Power Hookup:** All models are direct wired with no cords.

UL 499 Listing: c-ETL-us listed to UL499 Standards





Philip M Soucy
thesoucyshop.com



PLUG-N-FIRE KILN

Craft/Test Kilns



- **Genesis Mini Touch Screen Control**
 - with Kiln Aid app
- **Hard Ceramic Element Holders**
 - protect your elements and kiln
- **This kiln can fire to Cone 10 on a standard 15-amp circuit, and draws only 12.5 amps**
- **8" Square x 9" High**
 - (0.33 cu ft)
- **Extra-insulated sides with 2-1/2" K23 brick and 1" of backup insulation; Top & Bottom are 3" K23 brickfast heat-up**
- **Kiln plugs into a separate control panel with power and thermocouple wire jack**
- **Door safety switch shuts off power to the elements when the door is opened**
- **c-ETL-us listed to UL499 Standards**

The L&L Plug-n-Fire kiln combines precision and convenience, making it ideal for both professionals and beginners. Compact yet capable of firing to Cone 10 on a standard 120-volt outlet, it's the perfect tool for creative exploration and reliable results.



FURNITURE KITS



VENT-SURE VENT SYSTEM



PLUG-N-FIRE KILNS

Model No.	Cone Rating	Watts	Amps	Volts	Fuse	Plug	Lbs Kiln	Lbs w/Kit
PF8-120	10	1500	12.5	120	15	5-15	77	100
PF8-230-EU	10	1800	7.8	220-230	10	CEE 7/7	77	100
PF8-230-UK	10	1800	7.8	220-230	10	UK 15	77	100

Shipping: Ships in 2 - 50 lb boxes

Listings: Not yet listed to UL499

DOLL KILNS

Model No.	Cone Rating	Watts	Amps	Volts	Fuse	Plug	Lbs Kiln	Lbs w/Kit
DL11-D	5	1800	15	120	20	5-15	145	170
DLH11-D	6	2160	18	120	25	5-20	145	170
DLH11-DX-240	10	2800	11.7	240	15	14-30	145	170
DLH11-DX-208	10	2800	13.5	208	20	14-30	145	170

Cone Rating: Models rated Cone 5 to Cone 10.

Listings: c-ETL-us listed to UL499.



GENESIS MINI
Touch Screen Control



EFL SERIES KILNS

Studio Front-Loading Kilns



FRONT LOADING KILNS

- **Genesis Touch Screen Control** • with Kiln Aid app
- **Dynamic Zone Control** • for even firing
- **Hard Ceramic Element Channels** • protect your elements and kiln
- **Cone 10** (2350°F • 1290°C)
- **Type K Thermocouples (3)** • with protection tubes
- **3" • K23 Brick**
- **Solid, Straight-View Peephole Plug**
- **Engineered Stand for Difficult Installations** • optional casters
- **Easy-Access Control Panel**
- **Three-Year Limited Warranty**
- **c-ETL-us listed to UL499 Standards**

EFL Series Front-Loading kilns for studios and schools. Include arched sides and top for strength, heat-balanced insulation for even firing, adjustable door with plug seal, and door switch.



FURNITURE KITS



VENT-SURE VENT SYSTEM



CASTER OPTIONS



Model Number	Number of Shelves	Cubic Feet	Hearth Height	Inside Dimensions	Exterior Dimensions	240/1 KW-Amp-Fuse	240/3 KW-Amp-Fuse	208/1 KW-Amp-Fuse	208/3 KW-Amp-Fuse	Lbs Kiln	Lbs w/Kit
eFL1626	(3) 14"x 24"	6.6	30"	17W x 26H x 26D	36W x 63H x 39D	11.5-48.0-60	12.5-30.1-40	*11.6-56.0-70	12.5-34.7-50	645	725
eFL2626	(6) 12"x 24"	10.2	30"	26W x 26H x 26D	45W x 63H x 39D	15.4-64.0-80	15.4-37.0-50	15.4-73.9-100	15.4-42.6-60	765	850
eFL2635	(8) 12"x 24"	13.7	30"	26W x 35H x 26D	45W x 72H x 39D	19.2-80.0-100	19.2-52.9-70	19.2-92.3-125	19.2-61.1-80	895	900

All models are rated to Cone 10. *A special model eFL1626-208-X is rated at Cone 5 but has 48.0 amps and a 60 amp fuse. Plugs on US Models only: 6-50P on single phase and 15-50P on three phase for all eFL1626 models except the standard eFL1626-208 1 Phase and 3 phase eFL2626 which needs to be direct wired. All other models are direct wired.

Moving: All models fit through a 31" wide by 75" high door (before re-assembly). All eFL kilns can be moved with a pallet-jack. **High-lift pallet-jack required for assembly and unloading off pallet.**

More: See Easy-Load Spec Sheets and Dimension Drawings on each kiln page on our website for more details.

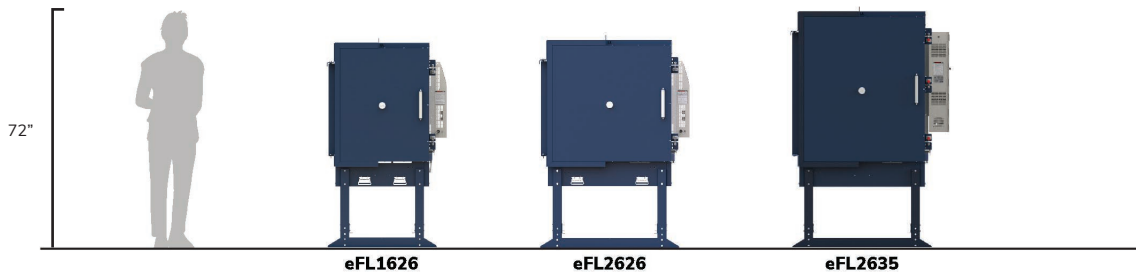
Shipping: Protected with wood crate and foam-in-place packaging for shipment by Common Carrier. Fits on one 48x48" pallet. Ships from factory direct to customer.

Checklist: Fill out installation checklist prior to order: hotkilns.com/eFL-checklist.

Listings: c-ETL-us listed to UL499 Standards



hotkilns.com
/kiln-series
/efl-series-kilns



OPTIONS AND ACCESSORIES

- **TYPE S THERMOCOUPLES**

The best thermocouple for constant high fire applications. There is no thermocouple drift and they will almost never need replacing. Priced per thermocouple. For a single-zone kiln you will need one, for a two-zone kiln two, and for a three-zone kiln three. Note that kilns with four or more sections still only have a three-zone control.

- (hotkilns.com/type-s)
(T-G-SJUP/UG)

- **CUSTOM OPTIONS**

Discuss your custom needs with us. We customize our kilns for industrial applications and special ceramic needs. We can make very tall kilns, very large diameter kilns, add special holes, make ceramic fiber tops, SSRs, and backup insulation. We have many years of industrial and special design experience.

- **SOLID STATE RELAYS** (standard on Easy-Load, DaVinci, Bell-Lift) industrial grade solid state relays are quiet and result in longer element life because the switching time is so fast the elements don't heat and cool as much the way they will with regular mechanical contactors. The whole system includes heat sinks, special fast acting fuses, cooling fan and extra safety relays.

(hotkilns.com/kiln-accessories/solid-state-relays)

- **SSR Power Control for 2 Circuit** (L-X-SSRS/02)
- **SSR Power Control for 5 Circuit** (L-X-SSRS/05)
- **SSR Power Control for 3 Circuit** (L-X-SSRS/03)
- **SSR Power Control for 6 Circuit** (L-X-SSRS/06)
- **SSR Power Control for 4 Circuit** (L-X-SSRS/04)
- **Note:** Panels with 6 circuits need to use the larger NEMA1 panel

APM SINTERED ELEMENTS

For even greater element life we offer APM alloy elements. This is a higher temperature alloy and provides approximately 3 times the life of regular elements - but are very expensive.

(hotkilns.com/apm)

HIGH ALUMINA SHELF MATERIAL

L&L shelves are made of strong, dense, press-molded (not cast) high alumina cordierite body designed for high fire with little warping.



DYNATROL OPTION

Traditional 24-Key pad. May be substituted for Genesis, with no change in price.



NEW ROLLING KILN STAND

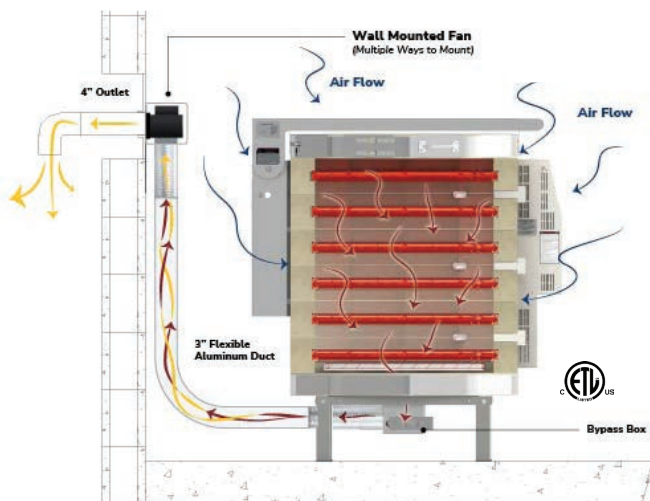
L&L's rolling kiln stand features heavy gauge aluminized steel construction with multiple bends for extra strength, swivel locking casters, integrated vent collection box mounts, and guide posts for the kiln. Each size is fitted to the kiln.

The vent collection box is not included. It is sold with the Vent-Sure System.



KILN VENTS AND ACCESSORIES

Vent-Sure Downdraft Vent System



- Downdraft venting pulls air down to bottom of kiln
- Improves temperature uniformity inside the kiln
- Powerful 130 CFM fan motor, typically mounted on wall, allows fumes to be under vacuum in your studio
- The strong fan motor helps overcome static pressure in long exhaust lines. The duct may be up to 60 feet in length, and include up to four 90° bends
- 120 volts with on/off switch on cord (240 volts available)
- 8 foot long flexible aluminum duct
- Bypass collection box mounted on kiln allows adjustment of venting
- Fan motor, mounted away from the kilns, stays cool and no vibration transmitted to the kiln
- Multi-Mount Bracket comes with the Vent System - allows you to mount vent motor in various positions.
- Three-year Limited Warranty
- c-ETL-us Listed to UL499 standards for use on c-ETL-us listed L&L Kilns (Easy-Fire, School-Master, Jupiter, Davinci, eFL, Easy-Load)

KILN VENTS AND ACCESSORIES



VENT DOUBLER

You can get a vent doubler option which allows you to vent two kilns that are each up to 10 cubic feet. (Note: Consider buying the Multi-Mount Bracket). Includes all parts necessary to vent two kilns - up to 10 cubic feet each with one vent.

hotkilns.com/doubler

(M-V-MVENT/DB)

Vent-Sure for 120 Volts (primarily used in the USA)

(M-V-VENT/00)

Vent-Sure for 220-240 Volts (Usually non-USA)

(M-V-VENT/41)

EXTRA LONG FLEX DUCT -3 ft to 15 ft heavy duty flexible duct

(M-V-DUCT/15)



VENT CONTROL

The Vent Control allows you to automatically control the operation of the Vent-Sure kiln vent with one of the outputs from the DynaTrol (or Genesis). (hotkilns.com/vent-control)

(M-V-CNTL/00)



MULTI-MOUNT BRACKET

Allows for easy installation anywhere; may function as a floor stand or wall-mount. Included with vent kit.

SQUARE & RECTANGULAR KILNS



DAVINCI KILNS

Square & Rectangular Top-Loading Kilns

Large volume square and rectangular kilns with adjustable height. DaVinci kilns are great for production and tiles. Includes arched sides for strength and counterbalanced lid.



Custom Heights Available

JH SERIES KILNS



JH SERIES

Crystalline Glaze Kilns

JH kilns are designed specifically for high-temperature crystalline glaze firing. Extra power, Quad element design, Type S thermocouples, and balanced super high-temperature brick for fast heat-up and fast cool-down make these kilns unique.



Hear from a Pro

Time, Efficiency, Reliability

“After 20 years in the kiln repair business, I can say that L&L kilns last longer than other brands, and the cost of ownership is much lower. General maintenance like replacing elements can be done in half the time of most other brands, and they typically need fewer repairs because they are so durable. **That can add up to a savings of several hundred dollars per kiln per year.**”

-Neil Estrick -
20+ years of kiln repair

Ceramic Element Holders



Protect Your Brick





L&L Kiln Mfg Inc
505 Sharptown Rd
Swedesboro, NJ 08085

Toll Free: 800-750-8350
Phone No: (856) 294-0077
Email: info@hotkilns.com