



Wire Ordering Guidelines

When ordering a replacement wire, please provide your kiln's model number and the following information:

1. Length

Provide the wire length in inches.

2. Wire Gauge

Specify whether the wire is 6, 8, 10, 14, or 16 gauge. If you can't measure the gauge precisely, measure the outer diameter as shown below. 6, 8, 10, and 14 gauge are typically used for various power wires while 16 gauge is typically used for control wires.

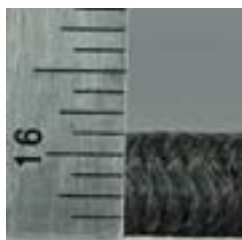
Keep in mind that different insulation types may affect the width of wires, so refer to the provided thickness ranges under each image:

6 AWG



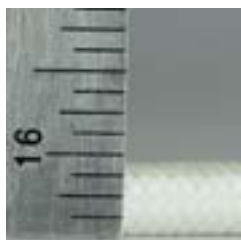
~11/32"

8 AWG



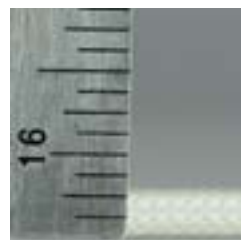
~5/16"

10 AWG



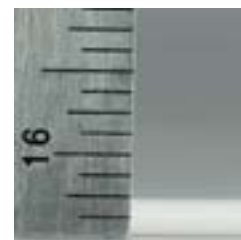
~3/16"-1/4"

14 AWG



~1/8"-5/32"

16 AWG



~1/8"

3. Terminal Type

Determine which terminal connector (if any) is used on either end of the wire:



**10-12 AWG
1/4" Spade**



**14-16 AWG
1/4" Spade**



**14-16 AWG
3/16" Spade**



**14-16 AWG 1/4"
Piggyback Spade**



**18-22 AWG
3/16" Spade**



**10-12 AWG
3/16" Fork**



**14-16 AWG
0.164" Fork**



**6 AWG
1/4" Ring**



**10-12 AWG
3/16" Ring**



**14-16 AWG
3/16" Ring**

