



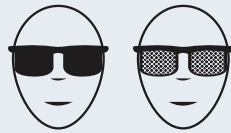
PLUG-N-FIRE

QUICK START GUIDE



hotkilns.com

VIEWING INTO KILN



Use dark glasses (shade number 1.7 to 3.0) to view inside the kiln through the peepholes when firing.

KEEP FLAMMABLES AWAY FROM KILN



Do not put sealed containers or combustible materials such as solvents, paper, rags, in or near kiln. An explosion or fire could result.

TURN OFF POWER WHILE LOADING

Turn off power to the kiln when loading or servicing.



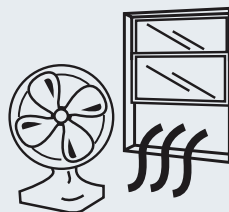
CHILDREN & PETS

Protect any children, animals, and unqualified adults (anyone who is not able to understand these cautions) that may be near the kiln.



VENTILATION IS ESSENTIAL

Kilns generate harmful fumes when firing ceramics. Fumes include carbon monoxide, sulfur oxides, hydrogen fluoride and metal vapors (all of which can be very toxic).



DO NOT STORE ANYTHING ON LID

Do not use the lid as a storage shelf. The lid could crack.



DO NOT FIRE TOXIC, FLAMMABLE, OR UNKNOWN MATERIALS

Flammable or unknown materials can decompose under heat causing the release of highly toxic fumes or rapid uncontrollable combustion.



NO EXTENSION CORDS

Locate the outlet close enough to the kiln to plug directly into it with the kiln's supplied power cord.



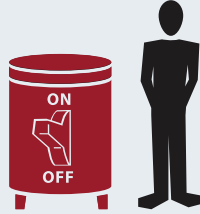
SURFACE IS HOT AND CAN CAUSE BURNS



Kiln surface can be extremely hot: up to 500°F(260°C). You can be severely burned if you touch the hot surface.

ATTEND THE FIRING

We recommend attending the kiln while firing. Be especially careful about attending the kiln when it is scheduled to shut off.



ELECTRICAL SAFETY

Lock out all electrical power before repairing kiln. Have electrical installation performed by a licensed electrician.



FIRE EXTINGUISHER

Keep an adequate fire extinguisher near the kiln and check it on a regular basis.



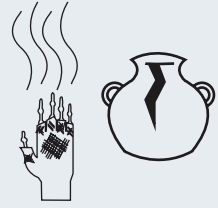
DO NOT OPEN DOOR ABOVE 250°F

Do not open the kiln door until the kiln has cooled down to 250°F (120°C).



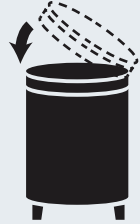
DO NOT UNLOAD KILN WHILE HOT

You may burn yourself or you may harm your work.



KEEP LID CLOSED WHEN KILN IS NOT USED

Keep lid closed when not operating the kiln. Keeping the lid closed will keep out dust and extend the longevity of your kiln.



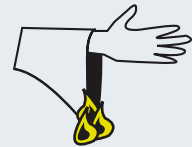
SPRINKLER CAUTIONS

If you have a sprinkler system be careful to check the temperature rating and location of the heads so that you do not inadvertently cause them to activate under normal firing conditions.



AVOID LOOSE/ FLAMMABLE CLOTHING

When working around a hot kiln be careful of the kinds of clothes you are wearing. Some clothes could potentially catch on fire if they touch the hot surface of a kiln.



KEEP KILN DRY

Kiln must be kept dry and protected from moisture. It is best to keep kiln in an enclosed room away from inclement weather and dew formation.

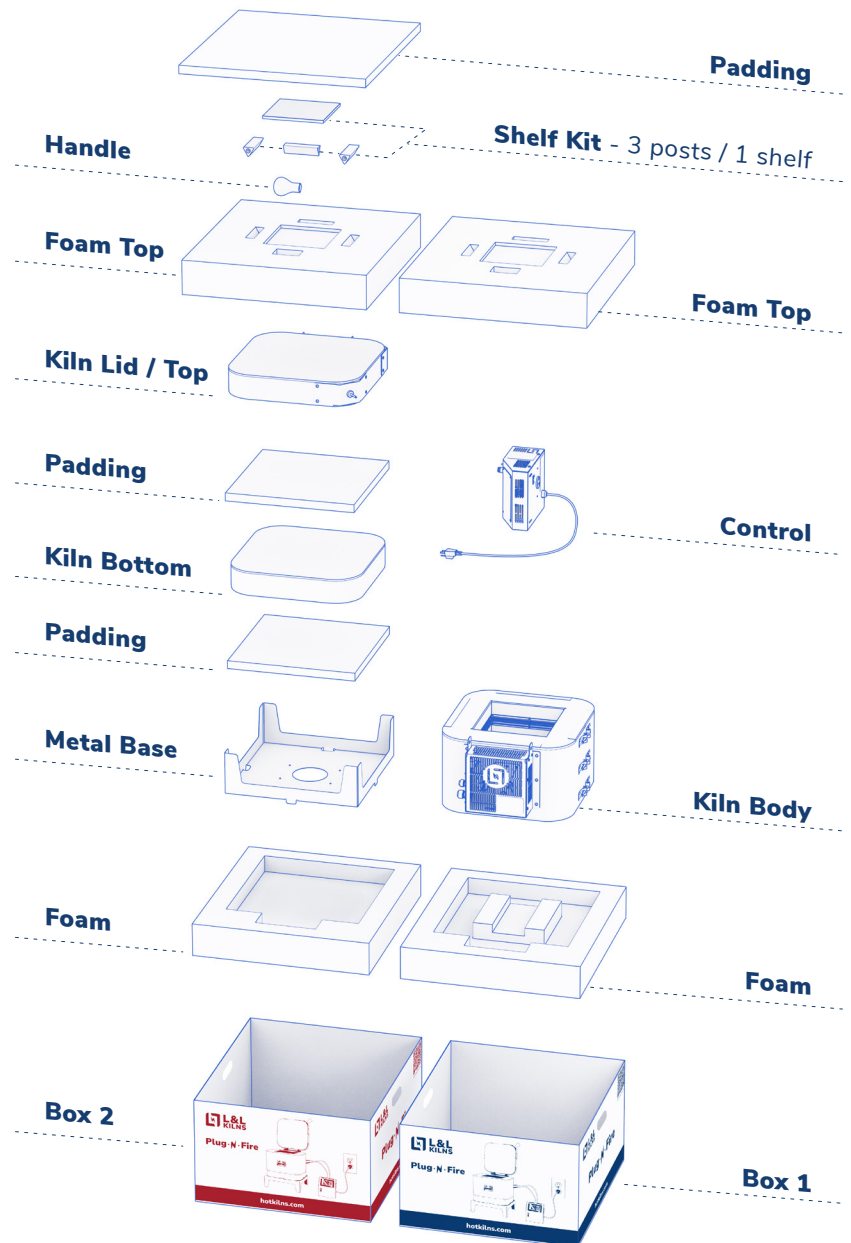


WHAT'S INSIDE Unpacking

Your Plug-N-Fire will arrive in two separate boxes. Box 1 (blue) contains the main ring and the Genesis mini controller, while Box 2 (red) contains the stand, bottom, lid, and furniture kit. Unpack both boxes and keep everything organized.

VENTILATION

- **No Vent Needed:** Compact design eliminates dedicated vent system.
- **Ventilation Tip:** Use in a well-ventilated area for performance, air quality, and safety.



IMPORTANT FIRING TIPS

Get To Know Your Kiln

hotkilns.com/instruct/plug-n-fire

It is essential to calibrate and understand how your kiln fires. Each glaze and clay differs and understanding your kiln's behavior helps in achieving the best results.

When firing below cone 1, we recommend firing 1-2 cones lower than your target cone. When firing above cone 1, we recommend firing 1 cone lower than your target cone.

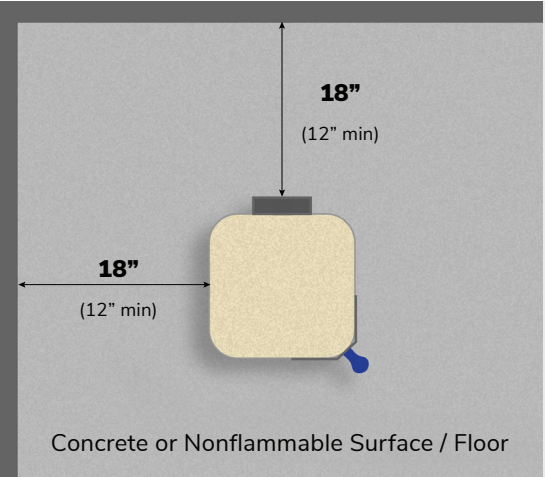
Additionally, incorporating a custom slow cool segment at the end of your firing, which can be beneficial for certain glazes, may increase the heat work. You'll need to compensate for this accordingly. For consistent results, fast firing is not recommended. Always use witness cones to monitor the firing process and make necessary adjustments.

INSTALLATION

Placement

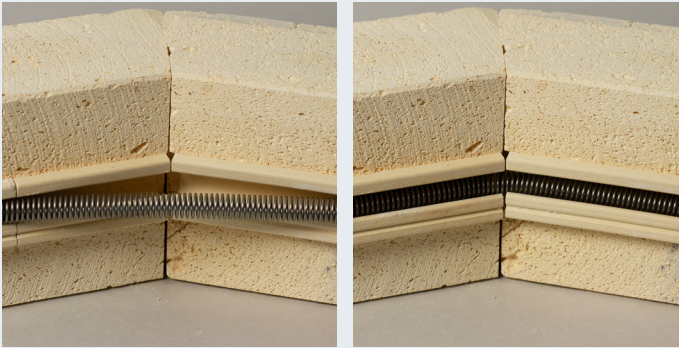
hotkilns.com/instruct/plug-n-fire

- **Floor Surface:** Use non-combustible surfaces (cement, ceramic, stone, slate, cinder blocks, brick).
- **Avoid:** Wood, vinyl, carpet; protect linoleum with a non-combustible covering.
- **Work Table:** May be placed on a non-combustible raised table.
- **Clearance:** Maintain 18" clearance from non-combustible walls, 12" minimum; 3 feet from combustible surfaces.



PRE-ASSEMBLY

Element Check



Make sure the elements rest completely in the channels

REMOVE

Element Clips

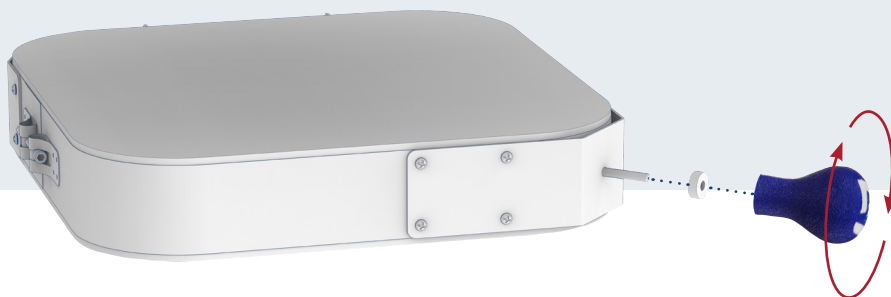


Remove transport clips from element channels located in the kiln body.

PRE-ASSEMBLY

Handle Attachment

Place ceramic washer on handle bolt and twist the handle until firm. Do not over tighten

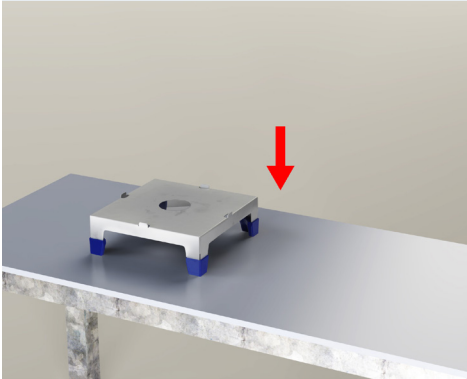


ASSEMBLY

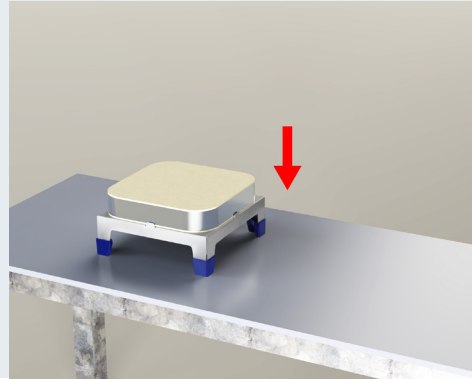
Base Setup

hotkilns.com/instruct/plug-n-fire

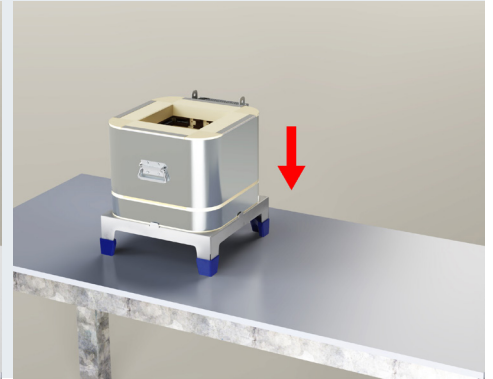
1. Place the metal base



2. Place kiln bottom on stand.



3. Place the kiln body



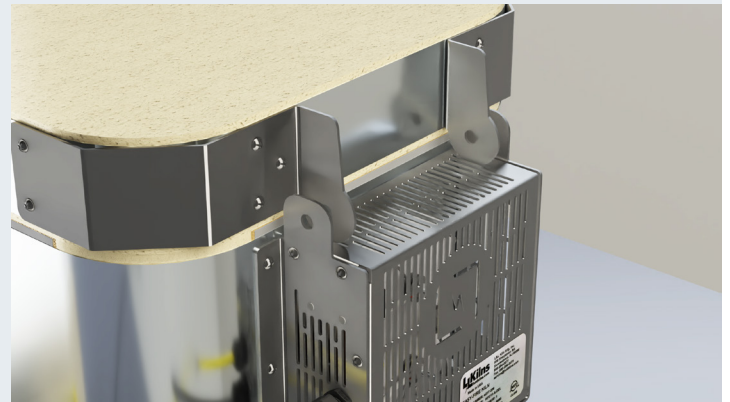
ASSEMBLY

Hinge Assembly

4. Place the lid, align like shown



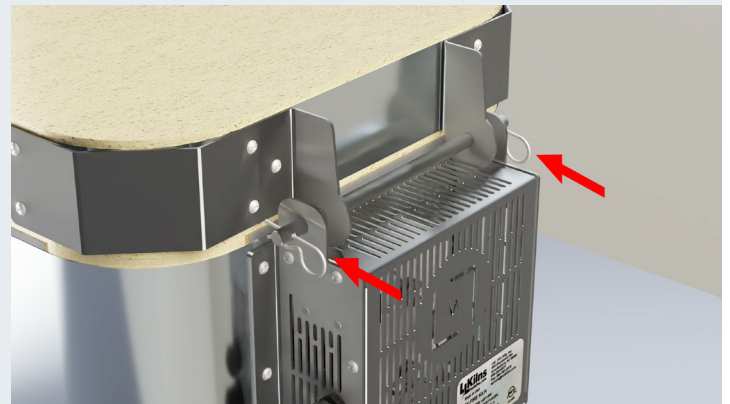
5. Hinge "ears" should sit in outer openings



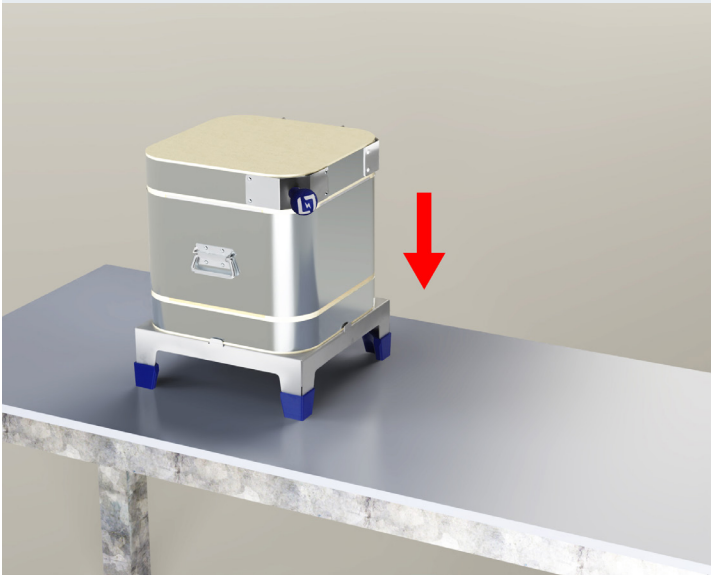
6. Insert hinge bar



7. Use 2 cotter pins to secure bar in place



8. Place the control box in place



9. Connect the power wire and thermocouple wire between controls and element box.



Ready To Fire!
Plug in and move on to your first firing!



View online video
or check the
genesis manual
for first firing

hotkilns.com/genesis/first-firing



Data Nameplate Information

You can find this information on the data nameplate attached to your kiln. Record it here for easy reference.

Model Number: _____

Serial Number: _____

Voltage: _____ Phase: _____

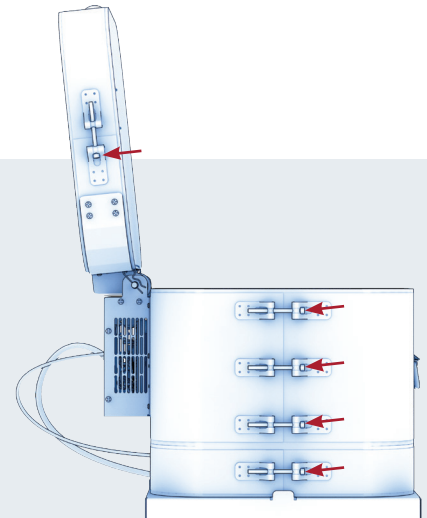
DISTRIBUTOR

Distributor: _____

Distributor Phone Number: _____

Moving Your Kiln

If you need to relocate the Plug-N-Fire kiln, you can easily disassemble and reassemble it at the new location. However, it's crucial to be aware that kilns expand and contract during the firing process, which can cause the steel case to loosen over time. Therefore, if the kiln has been fired, ensure you tighten the steel case before moving it. This precaution helps maintain the kiln's structural integrity and ensures safe transport.



In-Depth Instructions Online

hotkilns.com/instruct/plug-n-fire

GETTING STARTED

1. INSTALLATION
2. ASSEMBLY
3. MOVING
4. IMPORTANT FIRING TIPS
5. CAUTIONS
6. CONTROLS

7. MAINTENANCE & LOGGING

8. CONES, TIPS, CERAMIC PROCESS
9. TROUBLESHOOTING
10. SERVICE
11. RESOURCES

