



POTTERS

CATALOG 2023

Now Includes Free Genesis Touch Screen



Philip M Soucy
thesoucyshop.com



Matt Horne
MattHornePottery.co.uk

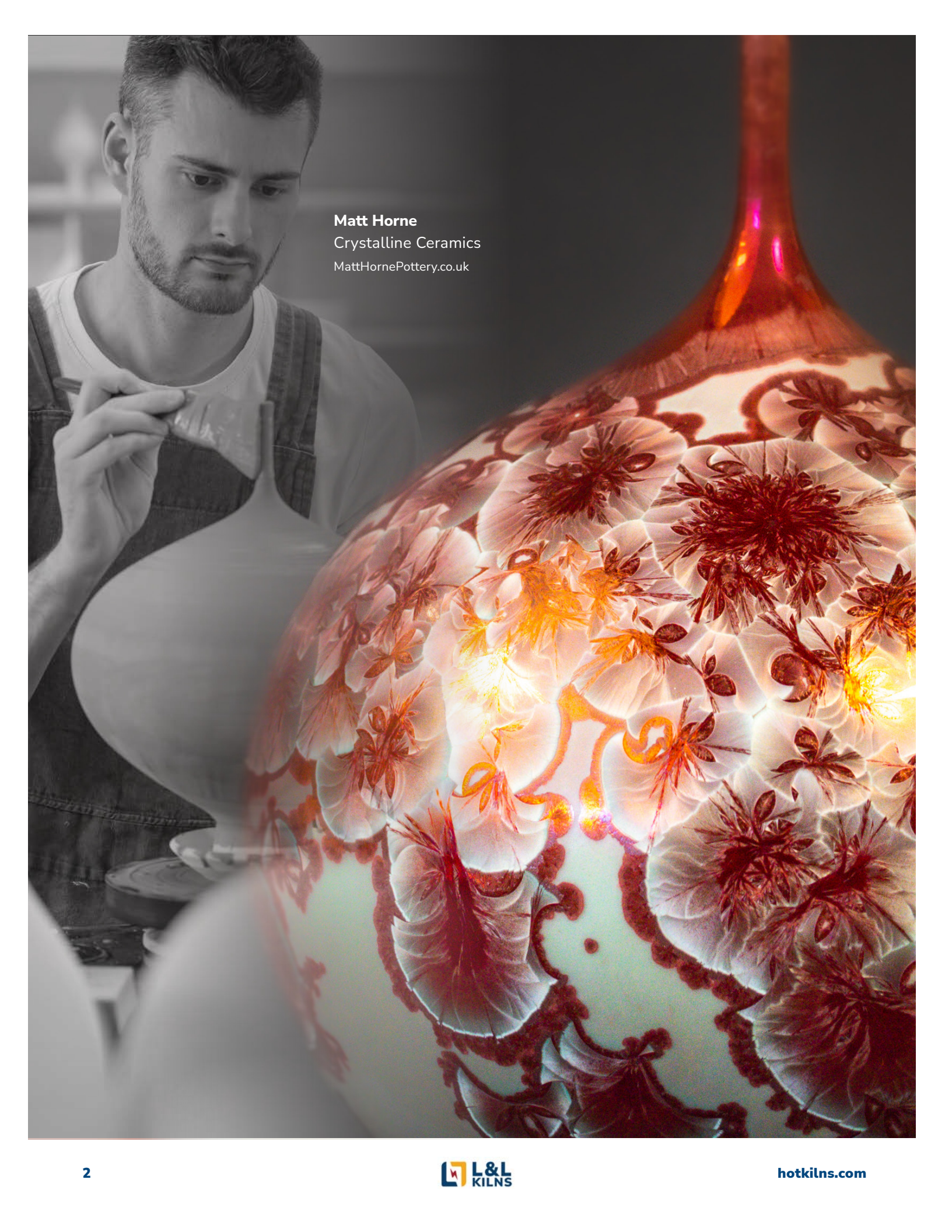


Lyndsay Meiklem Dean
TheVeganPotter.com



L&L Kiln Mfg Inc
505 Sharptown Rd
Swedesboro, NJ 08085

Toll Free: 800-750-8350
Phone No: (856) 294-0077
Email: info@hotkilns.com

The image is a composite. In the background, a man with a beard and short hair, wearing a white t-shirt and dark overalls, is shown in profile, focused on working with a piece of clay on a pottery wheel. In the foreground, a large, translucent ceramic vase is shown, filled with a warm, golden light. The vase is decorated with intricate, raised floral patterns in a reddish-brown color. The lighting creates a strong contrast between the dark background and the glowing vase.

Matt Horne
Crystalline Ceramics
MattHornePottery.co.uk

Embark On Your Artistic Journey With Confidence

L&L Kilns - The Choice of Professionals

For over 75 years, professional potters worldwide have trusted L&L kilns to bring their artistic visions to life. With an emphasis on ease and dependability, our kilns allow you to stay fully engaged in what truly counts.

Why we are a top choice among potters:

Multi-Zone Control

Built to withstand frequent and intense use with advanced zone control features, delivering consistent, repeatable results.

Maximum Protection, Worry-Free Craftsmanship

Hard ceramic element channels ensure maximum protection for your kiln, freeing you from worries and allowing you to focus on your craft.



User-Friendly Touchscreen Controls

Easy navigation and adjustment of settings, empowering you to have full control over the firing process. Quick start with pre-programmed settings or customize your own.

Monitor your kiln

Monitor your results with the Kiln Aid phone app.

Community Feedback

Ask any L&L user what they love about their L&L Kiln and discover why we have some of the most loyal customers in the business.

L&L MAKES KILNS SUSTAINABLE!

L&L Kilns have been manufactured in a fully solar powered facility since 2019.



WHAT L&L CUSTOMERS SAY



Karrita Renzelmann

QueenBeePottery.com / ClayStamps.etsy.com

"After researching and comparing many manufacturers to find the best kiln for my studio needs, I'm happy to share that my new L&L Kiln has exceeded all of my expectations!"



Lyndsay Meiklem Dean

TheVeganPotter.com

"I've been a potter for over 20 years and L&L Kilns have served me well for all those years!"



Masa Sasaki

MasaSasakiCeramics.com

"Close to 400 firings and the kiln has been exceptionally reliable. With the special element channels, replacing elements are as easy as changing a light bulb. I highly recommend this kiln for any working ceramic artist."



Matt Horne

MattHornePottery.co.uk

"L&L kilns have been a game changer for my crystalline glaze firings. They offer superior control, with the element holders making maintenance so much easier."



Philip M Soucy

TheSoucyShop.com

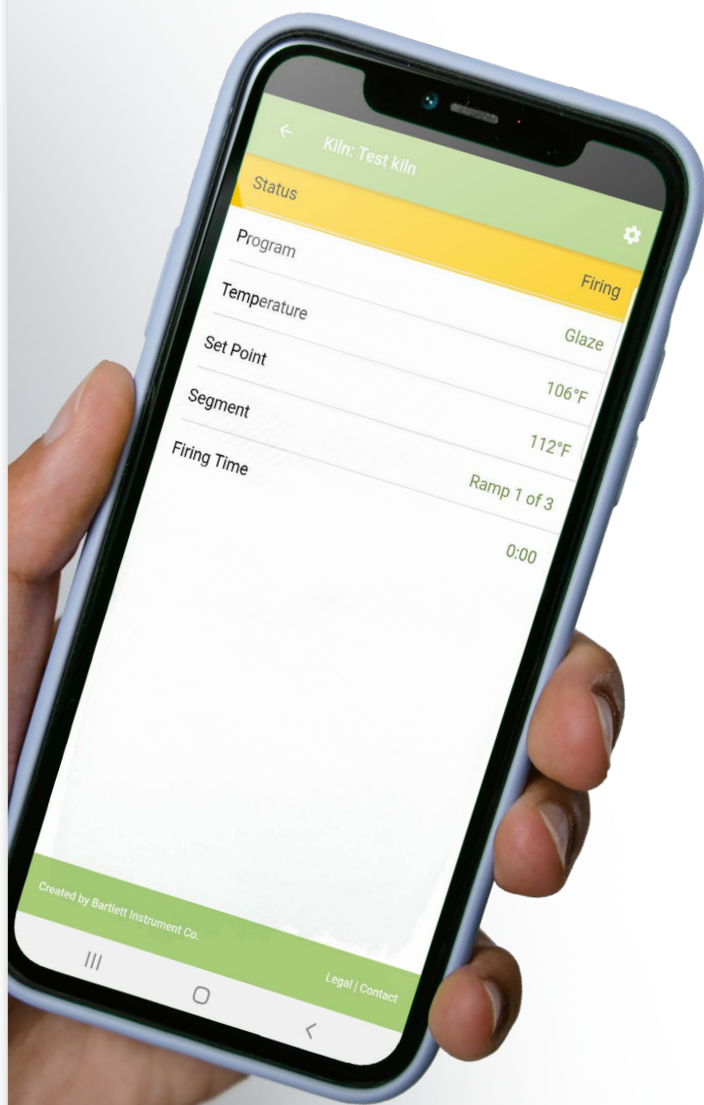
"No gimmicks, it's not unnecessarily flashy or touchy, it's a solid reliable kiln that I trust and now depend on at every push of the 'start' button. I love my L&L and I can't wait to unload it then fill it back up again!"



Lyndsay Meiklem Dean
TheVeganPotter.com

TOUCH SCREEN INCLUDED ON ALL MODELS

Simply download the Bartlett Kiln Aid app from your Google Play or Apple App Store, add your kiln, and begin monitoring your kiln from anywhere!



GENESIS MINI

Touch Screen Control

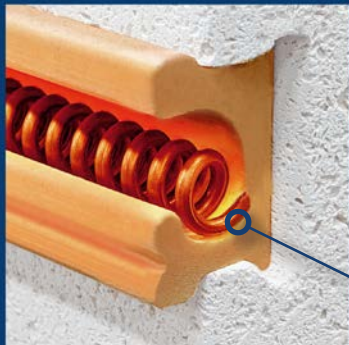
Genesis Touch Screen Control with Kiln Aid app

NOW INCLUDED ON ALL L&L KILNS

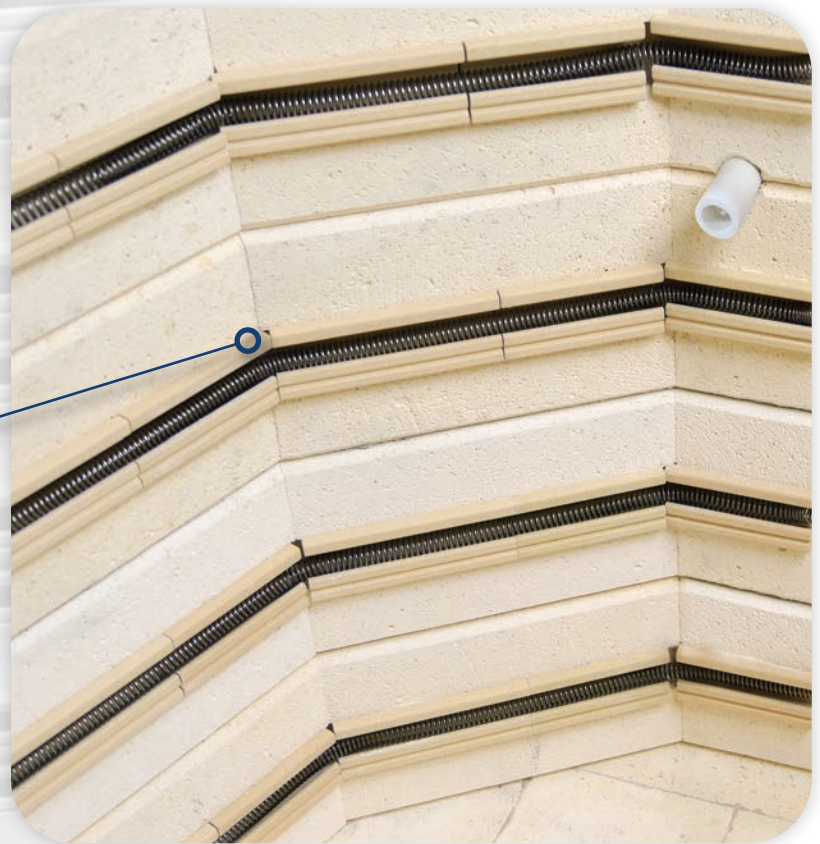


Fastest Element Change In The Industry

Hard Channels



Protect Your Brick



**Enhances Heat Distribution
& Radiant Heat**

See How Easy!

Video: Changing Elements



hotkilns.com/change-elements-ez



Ceramic Element Terminals
No Crimping or Special Tools

Ease of Maintenance

Hard Channels Make Replacing Elements Quick & Easy



Easy-Access Control Panel

- *Organized with numbered wires*
- *Designed to run cool*

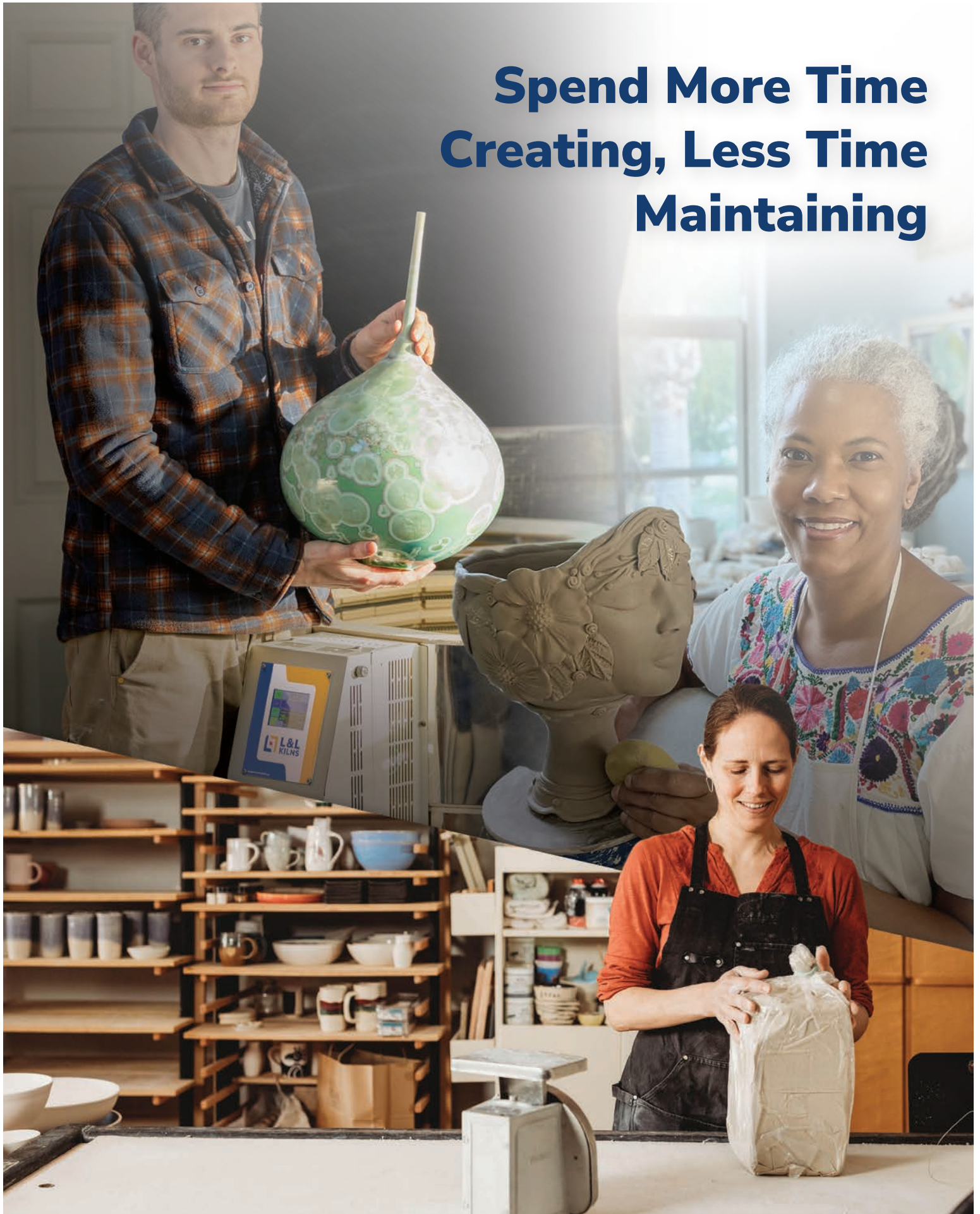


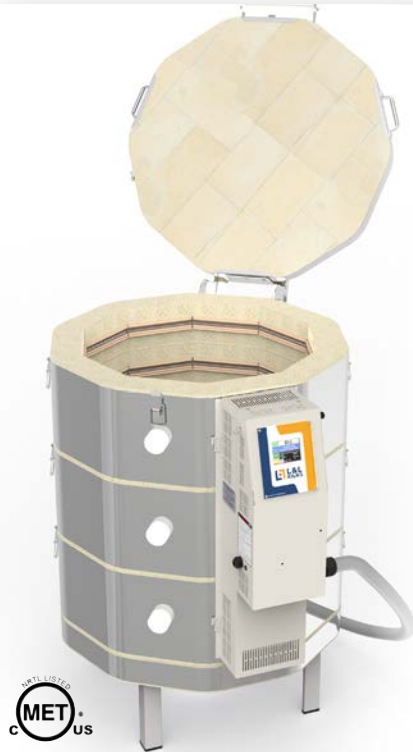
SEE FEATURES AT:

[hotkilns.com
/pottery-kiln-and-
ceramics-top-features](https://hotkilns.com/pottery-kiln-and-ceramics-top-features)



Spend More Time Creating, Less Time Maintaining





EASY-FIRE KILNS

Pottery Kilns



- **Genesis Touch Screen Control** • with Kiln Aid app
- **Dynamic Zone Control** • for even firing
- **Hard Ceramic Element Channels** • protect your elements and kiln
- **Cone 10** (2350°F • 1290°C) • most models
- **Type K Thermocouples (2-3)** • with protection tubes
- **3"** • K23 Brick
- **Top Loading** • spring assisted lid (23" & 28" models)
- **Solid, Straight View Peephole Plugs**
- **Full-Support Stand** • rolling option available
- **Easy-Access Control Panel** • with Easy-View tilted display
- **Three-Year Limited Warranty**
- **c-MET-us** listed to UL499 Standards

This is the classic L&L pottery kiln used by most of our customers. They include all the signature L&L features.



FURNITURE KITS



VENT-SURE VENT SYSTEM



ROLLING STAND



Model No.	Number of Shelves	Inside Diam	Inside Height	Cubic Feet	Exterior Dim (in)	240/1 KW~Amp~Fuse	240/3 KW~Amp~Fuse	208/1 KW~Amp~Fuse	208/3 KW~Amp~Fuse	Lbs Kiln	Lbs w/Kit
e14S-3	12" (3 Full)	13.5"	18"	1.5	23W x 51H x 27D	3.8~16~20	no 3 phase	3.8~18.5~25	no 3 phase	150	175
e18S-3	15" (1F, 4 Half)	16.5"	18"	2.5	28W x 55H x 30D	5.7~23.9~30	5.7~20.7~30	5.0~23.9~30	5.0~20.8~30	235	285
e18M-3	15" (1F, 4 Half)	16.5"	22.5"	3.2	28W x 60H x 30D	8.0~33.3~50	8.0~23.1~30	8.0~38.5~50	8.0~26.6~40	260	310
e18T-3	15" (2F, 4 Half)	16.5"	27"	3.7	28W x 63H x 30D	8.4~35.0~50	8.4~20.2~30	8.4~40.4~60	8.4~23.3~30	280	340
e23S-3	20" (6 Half)	22.5"	18"	4.4	30W x 59H x 40D	9.5~39.4~50	9.5~34.1~50	8.3~40.0~50	8.3~34.6~50	320	395
e23M-3	20" (6 Half)	22.5"	22.5"	5.5	30W x 63H x 40D	11.5~48.0~60	11.5~33.3~50	10.0~48.0~60	11.5~38.4~50	350	425
e23T-3	20" (8 Half)	22.5"	27"	6.7	30W x 68H x 40D	11.5~48.0~60	11.5~27.7~40	10.0~48.0~60	11.0~30.5~40	380	470
e28S-3	25-1/2" (6 Half)	28"	18"	6.8	35W x 65H x 46D	11.5~47.9~60	11.5~41.5~60	10.0~48.0~60	10.0~41.6~60	410	520
e28M-3	25-1/2" (6 Half)	28"	22.5"	8.5	35W x 69H x 46D	11.5~48.0~60	16.6~40.0~50	10.0~48.0~60	14.3~39.8~50	445	555
e28T-3	25-1/2" (8 Half)	28"	27"	10.2	35W x 74H x 46D	11.5~48.0~60	16.6~40.0~50	10.0~48.0~60	14.3~39.8~50	475	610

Cone Rating: All models are rated to Cone 10 except the single phase e28T-3 (rated to Cone 8 at 240V/1 Phase, Cone 5 at 208V/1 Phase, but Cone 10 for any 3 phase kiln) and the e28M-3 (rated at Cone 8 for 208V/1 phase). If planning continuous Cone 6 firings, or above, we recommend the eQuad-Pro eQ2827-3 or the Jupiter JD2927-3 (both have more KW than the e28T-3 in their single phase versions).

Power Hookup: (USA only) 6-50P plug on single phase and 15-50P plug on three phase except for the e14S-3 which has a 6-20P Plug for 240 volt models or a 14-30P Plug for 208 volt models.

UL 499 Listing: c-MET-us listed to UL499 standards. **CE Listing:** CE Listed models are available.

More: See Easy-Fire Spec Sheets and Dimension Drawings on each kiln page on our website for more details.



Type S Platinum Thermocouples
(T-G-SJUP/UG)

Pyrocil metallic Thermocouples
(T-G-E23M/UG)

Vent-Sure (120 volts)
(M-V-VENT/00)

Vent Doubler
(M-V-VENT/DB)

Vent Control
(M-V-CNTL/00)

Rolling Stand for

7 Sided Kiln (A-J-14RL/00)

8 Sided Kiln (A-J-18RL/00)

10 Sided Kiln ((A-J-23RL/00)

12 Sided Kiln (A-J-29RL/00)

EQUAD-PRO KILNS

Super-Duty High Production Kilns



- **Genesis Touch Screen Control** • with Kiln Aid app
- **Dynamic Zone Control** • for even firing
- **Hard Ceramic Element Channels** • protect your elements and kiln
- **Cone 10** (2350°F • 1290°C) • with extra power
- **Type K Thermocouples (3)** • with protection tubes
- **3" • K23 Brick**
- **Top Loading** • spring assisted lid
- **Solid, Straight View Peephole Plugs**
- **Full-Support Stand** • rolling option available
- **Easy-Access Control Panel** • branch fusing included
- **Three-Year Limited Warranty**
- **c-MET-us** listed to UL499 Standards
- **Quad Element System Comes Standard**

25% Extra power and Quad element system make eQuad-Pro kilns ideal for Production Potters.



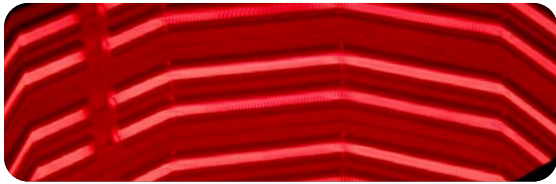
FURNITURE KITS



VENT-SURE VENT SYSTEM



ROLLING STAND



QUAD ELEMENT SYSTEM INCLUDED

Shown is the inside of an eQuad-Pro while firing. Notice how the element channels glow and disperse the radiant heat. The large diameter elements (both of the wire gauge and outside diameter of the element coil), coupled with the unique glowing feature of the hard dense ceramic element channels make these elements last for a very long time. (hotkilns.com/quad-elements)

Optional APM Elements: See hotkilns.com/apm for pricing.

Voltage: Order 240 or 208 volts, single or three phase, or international voltages. KW, amperage, and fuse size for each voltage below. 480 volts is not available. No charge for any voltage options.

Vent-Sure (120 volts)
(M-V-VENT/00)

Vent Doubler
(M-V-VENT/DB)

Vent Control
(M-V-CNTL/00)

SSR Power Control for 3 Circuit
(L-X-SSRS/03)

SSR Power Control for 4 Circuit
(L-X-SSRS/04)

High Limit Back Up Control
(N-G-PKHL/00)

Back up Contactors Three-Section Kilns
(N-G-BCJ3/00)

Back up Contactors Four-Section Kilns
(N-G-BCJ4/00)

Type S Platinum Thermocouples
(T-G-SJUP/UG)

Pyrocil metallic Thermocouples
(T-G-E23M/UG)

Model No.	No. of Shelves All Half Shelves	Inside Diam	Inside Height	Cubic Feet	Exterior Dimensions	240/1 KW~Amp~Fuse	240/3 KW~Amp~Fuse	208/1 KW~Amp~Fuse	208/3 KW~Amp~Fuse	Lbs Kiln	Lbs w/Kit
eQ2327-3	20" (8 Half)	22.5"	27"	6.7	30W x 69H x 40D	13.4~56.0~70	13.4~32.4~50	11.7~56.0~70	11.7~32.4~50	395	485
eQ2827-3	25.5" (8 Half)	28"	27"	10.2	35W x 74H x 49D	15.0~62.3~80	15.0~36.0~50	15.0~71.9~90	15.0~41.5~60	515	650
eQ2836-3	25.5" (10 Half)	28"	36"	13.6	35W x 83H x 49D	19.0~79.2~100	19.0~51.5~70	19.0~91.3~125*	19.0~60.4~80	605	770

***Note:** Special model eQ2836-X-208-1P is available with 16.6 KW, 208 Volt/1 Phase, 80 amps for a 100 amp fuse.

Cone Rating: All models rated for Cone 10 on a production basis due to extra power and Quad elements.

More: See eQuad Spec Sheets and Dimension Drawings on each kiln page on our website for more details. **Power Hookup:** All models are direct wired with no cords.

UL 499 Listing: c-MET-us listed to UL499 standards.



Philip M Soucy
thesoucyshop.com



DOLL / TEST Craft / Test Kilns



- **Genesis Touch Screen Control** • with Kiln Aid app
- **Hard Ceramic Element Channels** • protect your elements and kiln
- **Cone 5 to Cone 10** • depends on voltage and amps
- **Type K Thermocouple (1)** • with protection tube
- **2.5" Sides, 3" Lid/Bottom** • K23 Brick
- **Top Loading**
- **Solid, Straight-View Peephole Plug**
- **Full-Support Stand**
- **Easy-Access Control Panel** • with Easy-View tilted display
- **Three-Year Limited Warranty**
- **c-MET-us listed to UL499 Standards**

Small test and craft kilns that can run on 120 volts or low-amperage 208-240-volt circuits. These are great for beginning potters or for testing glazes.



FURNITURE KITS



VENT-SURE VENT SYSTEM



SPECIFICATIONS

Temperature: (See below)

Cubic Feet:	0.5 cu FT
Inside Dimensions:	11" W x 9" H
Outside Dimensions:	24" W x 21" D x 40" H

NOTE: The 120 volt versions should not be used for high production to their maximum temperature range - the element life will not be acceptable under those conditions. 208 volt and 240 volt versions are rated to Cone 10 for high production.

Model No.	Cone Rating	Watts	Amps	Volts	Fuse	Plug	Lbs Kiln	Lbs w/Kit
DL11-D	5	1800	15	120	20	5-15	145	170
DLH11-D	6	2160	18	120	25	5-20	145	170
DLH11-DX-240	10	2800	11.7	240	15	14-30	145	170
DLH11-DX-208	10	2800	13.5	208	20	14-30	145	170

Cone Rating: Models rated Cone 5 to Cone 10.

Listings: cMET-us listed to UL499.

OPTIONS

Furniture Kit: Includes two 9" diameter full shelves plus Doll Square Ceramic Post Kit (Four each 1/2", 1", 2", 4" square posts).

APM Elements: See hotkilns.com/apm



GENESIS MINI
Touch Screen Control

EFL SERIES KILNS

Studio Front-Loading Kilns



- **Genesis Touch Screen Control** • with Kiln Aid app
- **Dynamic Zone Control** • for even firing
- **Hard Ceramic Element Channels** • protect your elements and kiln
- **Cone 10** (2350°F • 1290°C)
- **Type K Thermocouples (3)** • with protection tubes
- **3" • K23 Brick**
- **Front Loading**
- **Solid, Straight-View Peephole Plug**
- **Engineered Stand for Difficult Installations** • optional casters
- **Easy-Access Control Panel**
- **Three-Year Limited Warranty**
- **c-MET-us listed to UL499 Standards**

EFL Series Front-Loading kilns for studios and schools. Include arched sides and top for strength, heat-balanced insulation for even firing, adjustable door with plug seal, and door switch.

FRONT LOADING KILNS



FURNITURE KITS



VENT-SURE VENT SYSTEM



CASTER OPTIONS

Assembly: Although these kilns are much lighter than an Easy-Load kiln they still take effort to remove from the pallet and assemble. The design allows for easier residential delivery. Please see the details: (hotkilns.com/eFL-shipping-checklist). All models fit through a 31" wide by 75" high door (before re-assembly).

Door Element Safety Switch: Limit switch turns power off to elements when the door is open. Included as standard equipment.

VOLTAGE & POWER OPTIONS

Order 240 or 208 volts, single or three phase, or international voltages. KW, amperage, and fuse size for each voltage below. 480 volts is not available. No Charge for any voltage options.

CRATING OPTIONS

Engineered Pallet.

High Lift Pallet Jack required to unload.

(G-G-PACK/EF)

NO CHARGE

ISPM-15 for export.

Plywood crate for eFL Series Front-Loading Kilns

(Requires forklift to unload)

(G-G-ISPM/EF)

Model Number	Number of Shelves	Cubic Feet	Hearth Height	Inside Dimensions	Exterior Dimensions	240/1 KW~Amp~Fuse	240/3 KW~Amp~Fuse	208/1 KW~Amp~Fuse	208/3 KW~Amp~Fuse	Lbs Kiln	Lbs w/Kit
eFL1626	(3) 14"x 24"	6.6	30"	17W x 26H x 26D	36W x 63H x 39D	11.5~48.0~60	12.5~30.1~40	10.0~48.0~60	*12.5~34.7~50	645	725
eFL2626	(6) 12"x 24"	10.2	30"	26W x 26H x 26D	45W x 63H x 39D	15.4~64.0~80	15.4~37.0~50	15.4~73.9~100	15.4~42.6~60	765	850
eFL2635	(8) 12"x 24"	13.7	30"	26W x 35H x 26D	45W x 72H x 39D	19.2~80.0~100	19.2~52.9~70	19.2~92.3~125	19.2~61.1~80	895	900

All models are rated to Cone 10 except the 208 volt single phase eFL1626 which is rated to Cone 5. * A special model eFL1626-208-X is rated at Cone 10 but has 56.0 amps with a 70 amp fuse and is wired direct. Plugs on US Models only: 6-50P on single phase and 15-50P on three phase for all eFL1626 models except the special eFL1626-208-X and 3 phase eFL2626. All other models are direct wired.

Moving: All models fit through a 31" wide by 75" high door (before re-assembly). All eFL kilns can be moved with a pallet-jack. **High-lift pallet-jack required for assembly and unloading off pallet.**

More: See Easy-Load Spec Sheets and Dimension Drawings on each kiln page on our website for more details.

Shipping: Protected with wood crate and foam-in-place packaging for shipment by Common Carrier. Fits on one 48x48" pallet. Ships from factory direct to customer.

Checklist: Fill out installation checklist prior to order: hotkilns.com/eFL-checklist.

Listings: cMET-us listed to UL499.

OPTIONS AND ACCESSORIES

● TYPE S THERMOCOUPLES

The best thermocouple for constant high fire applications. There is no thermocouple drift and they will almost never need replacing. Priced per thermocouple. For a single-zone kiln you will need one, for a two-zone kiln two, and for a three-zone kiln three. Note that kilns with four or more sections still only have a three-zone control.

● hotkilns.com/type-s
(T-G-SJUP/UG)

● CUSTOM OPTIONS

Discuss your custom needs with us. We customize our kilns for industrial applications and special ceramic needs. We can make very tall kilns, very large diameter kilns, add special holes, make ceramic fiber tops, SSRs, and backup insulation. We have many years of industrial and special design experience.

● SOLID STATE RELAYS

industrial grade solid state relays are quiet and result in longer element life because the switching time is so fast the elements don't heat and cool as much the way they will with regular mechanical contactors. The whole system includes heat sinks, special fast acting fuses, cooling fan and extra safety relays.

(hotkilns.com/kiln-accessories/solid-state-relays)

● **SSR Power Control for 2 Circuit**
(L-X-SSRS/02)

● **SSR Power Control for 5 Circuit**
(L-X-SSRS/05)

● **SSR Power Control for 3 Circuit**
(L-X-SSRS/03)

● **SSR Power Control for 6 Circuit**
(L-X-SSRS/06)

● **SSR Power Control for 4 Circuit**
(L-X-SSRS/04)

● **Note:** Panels with 6 circuits need to use the larger NEMA1 panel



QUAD ELEMENTS

Four rows of elements for each 9" kiln section. For maximum high-fire element life. The combination of 1/2" diameter element coils, doubled surface area of the Quad element design, and superior heat transfer of L&L's patented ceramic element channels, make this the best element system in the world today. Quad elements are available as an option on most L&L kilns. They are standard on eQuad-Pro and JH Series.

(hotkilns.com/quad-elements)

APM SINTERED ELEMENTS

For even greater element life we offer APM alloy elements. This is a higher temperature alloy and provides approximately 3 times the life of regular elements - but are very expensive.

(hotkilns.com/apm)

HIGH ALUMINA SHELF MATERIAL

L&L shelves are made of strong, dense, press-molded (not cast) high alumina cordierite body designed for high fire with little warping.



DYNATROL OPTION

Traditional 24-Key pad. May be substituted for Genesis, with no change in price.



NEW ROLLING KILN STAND

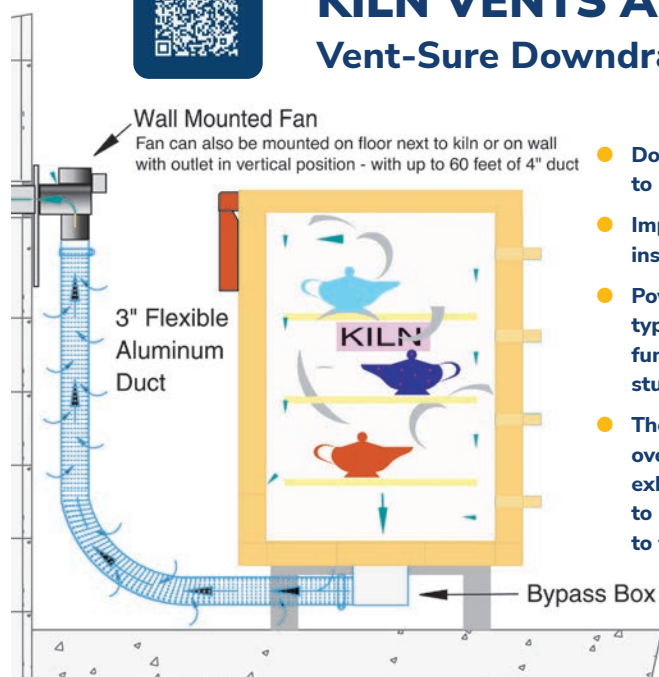
L&L's rolling kiln stand features heavy gauge aluminized steel construction with multiple bends for extra strength, swivel locking casters, integrated vent collection box mounts, and guide posts for the kiln. Each size is fitted to the kiln.

The vent collection box is not included. It is sold with the Vent-Sure System.



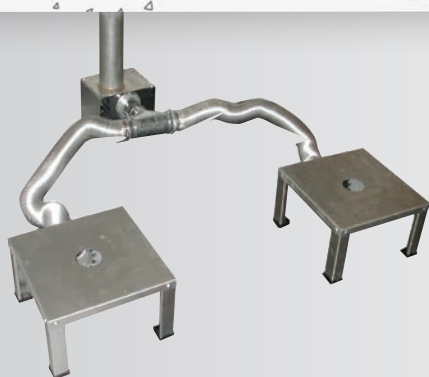
KILN VENTS AND ACCESSORIES

Vent-Sure Downdraft Vent System



- Downdraft venting pulls air down to bottom of kiln
- Improves temperature uniformity inside the kiln
- Powerful 130 CFM fan motor, typically mounted on wall, allows fumes to be under vacuum in your studio
- The strong fan motor helps overcome static pressure in long exhaust lines. The duct may be up to 60 feet in length, and include up to four 90° bends

- 120 volts with on/off switch on cord (240 volts available)
- 8 foot long flexible aluminum duct
- Bypass collection box mounted on kiln allows adjustment of venting
- Fan motor, mounted away from the kilns, stays cool and no vibration transmitted to the kiln
- Multi-Mount Bracket comes with the Vent System - allows you to mount vent motor in various positions.
- Three-year Limited Warranty
- c-MET-us Listed to UL499 standards for use on c-MET-us listed L&L Kilns (Easy-fire, School-Master, Jupiter, Davinci, eFL)



VENT DOUBLER

You can get a vent doubler option which allows you to vent two kilns that are each up to 10 cubic feet. (Note: Consider buying the Multi-Mount Bracket). Includes all parts necessary to vent two kilns - up to 10 cubic feet each with one vent.

(hotkilns.com/doubler)

(M-V-MVENT/DB)



VENT CONTROL

The Vent Control allows you to automatically control the operation of the Vent-Sure kiln vent with one of the outputs from the DynaTrol (or Genesis). (hotkilns.com/vent-control)

(M-V-CNTL/00)

Vent-Sure for 120 Volts (primarily used in the USA)

(M-V-VENT/00)

Vent-Sure for 220-240 Volts (Usually non-USA)

(M-V-VENT/41)

EXTRA LONG FLEX DUCT -3 ft to 15 ft heavy duty flexible duct

(M-V-DUCT/15)



MULTI-MOUNT BRACKET

Allows for easy installation anywhere; may function as a floor stand or wall-mount. Included with vent kit.

SQUARE & RECTANGULAR KILNS



DAVINCI KILNS

Square & Rectangular Top-Loading Kilns

Large volume square and rectangular kilns with adjustable height. DaVinci kilns are great for production and tiles. Includes arched sides for strength and counterbalanced lid.



Custom Heights Available

FRONT LOADING KILNS



EASY-LOAD KILNS

Commercial Front-Loading Kilns

Commercial-grade front-loading kilns for production. Includes adjustable door with plug seal and fiberglass gasket, door elements, heavy-gauge welded case, 3" brick walls and base, 4.5" K25 arched brick top, 2" of backup insulation between firebrick and metal casing, door switch, and industrial panel with branch fusing.



JUPITER KILNS

Modular & Highly Customizable



The unique plug-in control panel and extreme sectional construction make Jupiter kilns ideal for sculptors and ceramic artists who need flexibility.

Custom Heights Available

JUPITER KILNS

JH SERIES

Crystalline Glaze Kilns



JH kilns are designed specifically for high-temperature crystalline glaze firing. Extra power, Quad element design, Type S thermocouples, and balanced super high-temperature brick for fast heat-up and fast cool-down make these kilns unique.

JH SERIES KILNS

More Information & Support at hotkilns.com

Prices are always current on our website. Find complete specifications, support videos, photos, parts, PDF Library, and thousands of pages of knowledgebase information easily, using our sophisticated search engine.



Masa Sasaki
MasaSasakiCeramics.com

TRUST YOUR KILN

505 Sharptown Road • Swedesboro, NJ 08085
Phone: 856.294.0077 • Fax: 856.294.0070
info@hotkilns.com • hotkilns.com



Karrita Renzelmann
QueenBeePottery.com
ClayStamps.etsy.com

POTTERS

CATALOG 2023

