

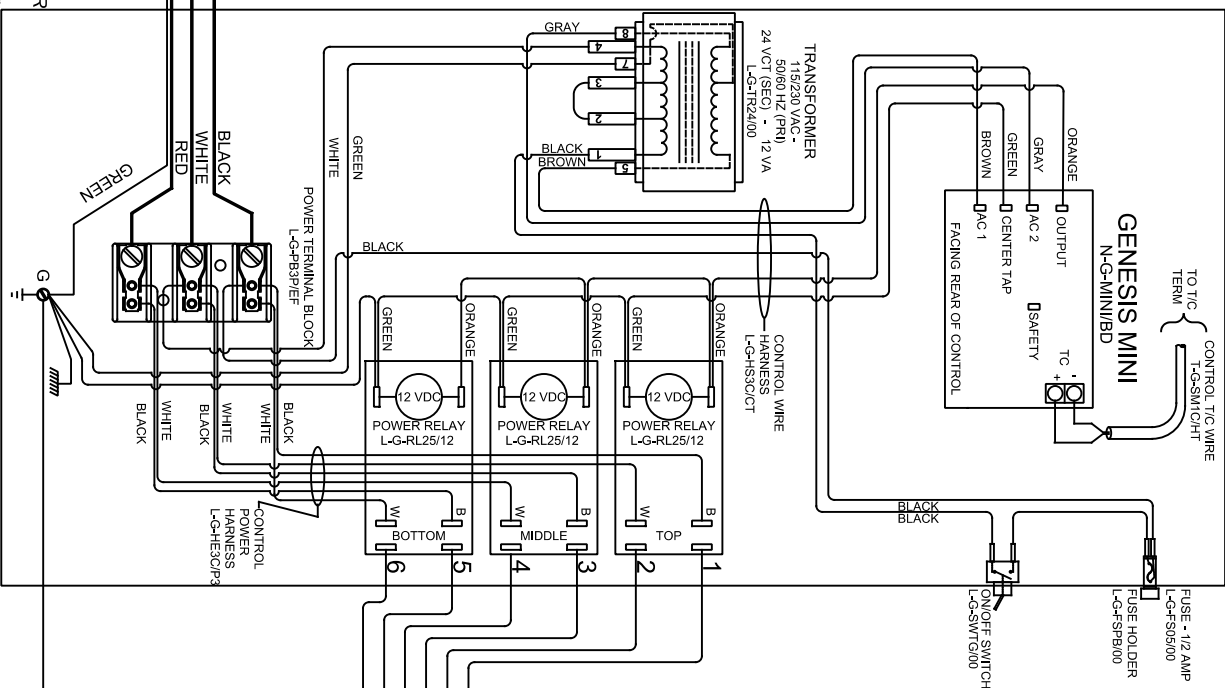
NOTES:

Control Wire:
16 AWG, 105°C
Power Wire:
10 AWG, 150°C

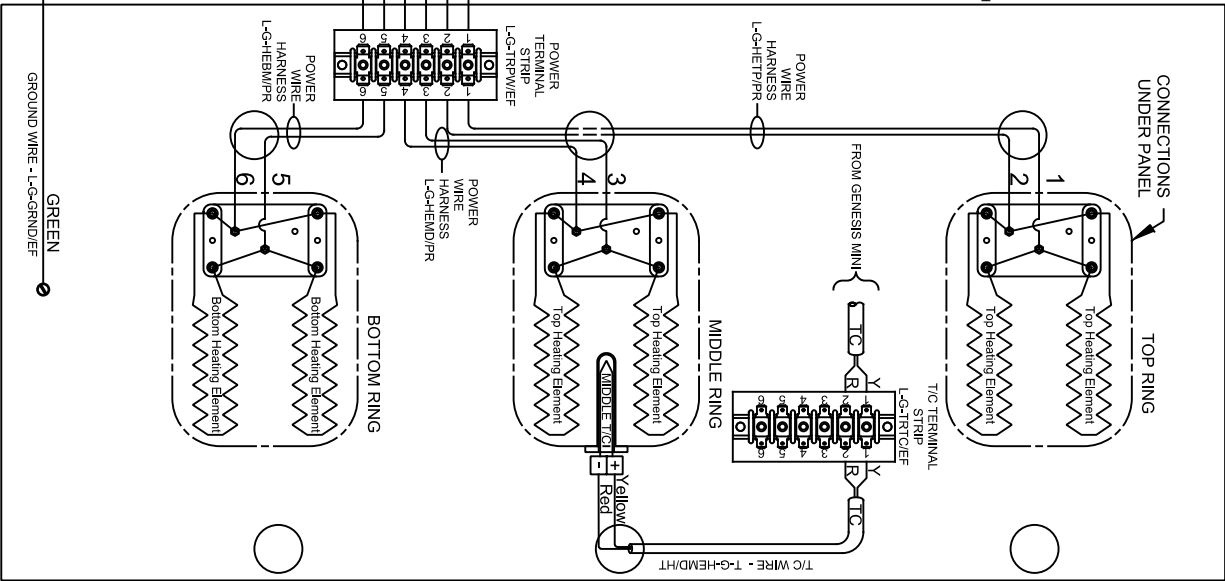
Industrial & commercial installations may require the installation of a LOCKOUT/TAGOUT device to prevent the Kiln from operating during maintenance.

This Kiln is recommended to be wired & connected to an approved U. L. & NEC configured receptacle controlled with a disconnect switch and properly fused according to the KW load on the Kiln Nameplate. L&L Kiln Mfg., Inc., also recommends fuses rather than circuit breakers to prevent nuisance tripping.

LOOKING INSIDE CONTROL PANEL



LOOKING AT OUTSIDE OF ELEMENT COVER PANEL



Model SM23T-A-3P

VOLTAGE	208 / 3 / 50-60		
WATTS	8990		
FULL LOAD AMPS	L1	L2	L3
	27.4	27.9	27.9
POWER SUPPLY	FUSE	WIRE	
	40A	8 AWG	
ELEMENTS	QTY	OHMS	
(E-S-23TT/31)	4	29.3	
(E-S-23TB/31)	2	28.3	

Model SM23T-A-3P

VOLTAGE	220 / 3 / 50-60		
WATTS	10060		
FULL LOAD AMPS	L1	L2	L3
	27.4	27.9	27.9
POWER SUPPLY	FUSE	WIRE	
	40A	8 AWG	
ELEMENTS	QTY	OHMS	
(E-S-23TT/31)	4	29.3	
(E-S-23TB/31)	2	28.3	

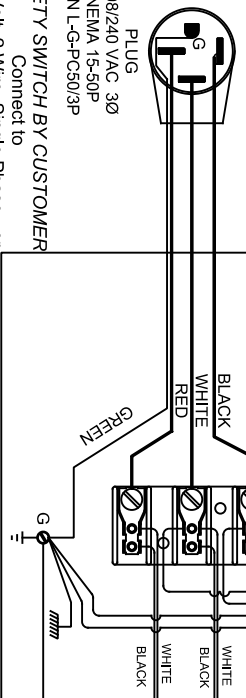
Model SM23T-A-3P

VOLTAGE	240 / 3 / 50-60		
WATTS	11,520		
FULL LOAD AMPS	L1	L2	L3
	27.4	27.8	27.8
POWER SUPPLY	FUSE	WIRE	
	40A	8 AWG	
ELEMENTS	QTY	OHMS	
(E-S-23TT/31)	4	29.3	
(E-S-23TB/31)	2	28.3	

The kiln is made for multiple voltages. The elements are the same for all voltage configurations. To change voltage from single phase to three phase see drawing E326-C which shows different plugs and power wire attachment points.



UL 499



SAFETY SWITCH BY CUSTOMER
Connect to
240 Volt, 2 Wire, Single Phase - or
220 Volt, 2 Wire, Single Phase - or
208 Volt, 2 Wire, Single Phase
50 or 60 Cycles.

DRAWING NO.	SHEET OF	REV	DATE	TITLE	SCALE	DATE	DRAWN BY	FILE NAME
E326-200A	1/1	0		SM23T-A-3P KILN (GENESIS MINI)	1 = 8	03/25/23	S.J.L	

REV #	DATE	DESCRIPTION

898 SHARPTOWN RD.
SWANEBORO, NJ 08885
PHONE: (856) 294-0077
FAX: (856) 294-0070

SM23T-A-3P KILN (GENESIS MINI)
208-220-240V 3 PHASE

MADE FROM
E326-200