



2023 CATALOG

(Feb 1, 2023)

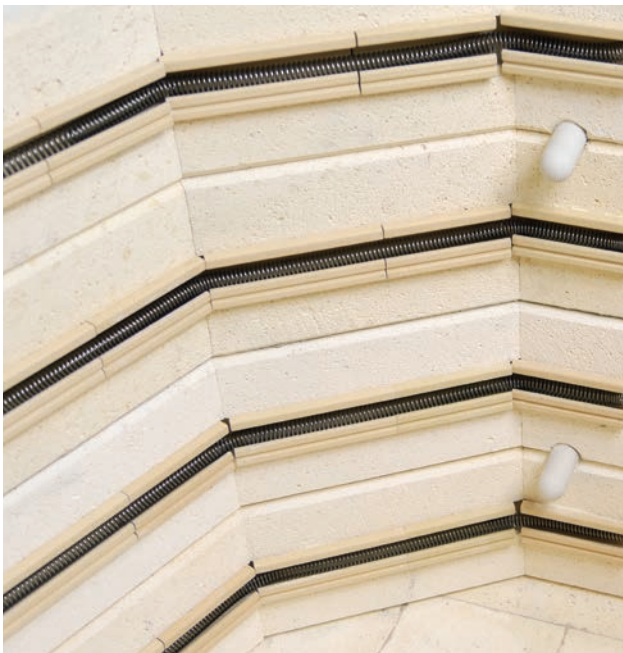


TRUST YOUR KILN

Clean. Precise. Dependable.

**L&L Kiln's patented
hard ceramic element holders
protect your kiln.**

- Fires Clean
- Fires Evenly
- Easy to Program
- Keeps Working



hotkilns.com/easy-fire



**FREE
Zone Control**

*This important feature helps you create
better work with more even firings.*

KILNS BUILT TO LAST



INDEX TO L&L KILNS

POLYGONAL KILNS

Easy-Fire Flagship Kilns	4-5
School-Master School Kilns	8
eQuad-Pro Production Kilns	9
JH Series Crystalline Glaze Kilns	10
DL Series Doll & Test Kilns	11
Jupiter Configurable Sectional Kilns	12-13
Pull-Apart Kilns	13 & 22

SQUARE & RECTANGULAR KILNS

DaVinci Production Kilns	14-15
--------------------------------	-------

FRONT-LOADING KILNS

eFL Series Studio Front-Loading Kilns	16-17
Easy-Load Large Commercial Front-Loading Kilns	18-19

BELL-LIFT KILNS

DaVinci Large Bell Lift Kilns	20
Jumbo 100 Cubic Foot Production / Industrial Kilns	21

INDUSTRIAL KILNS

Large Polygonal Kilns	22
Large Square Kilns	22

OPTIONS

Genesis Control with FREE Phone App	6
Quad & APM Element Upgrades	7
Rolling Stands	7
Vent-Sure Vent and Vent Options	23
Control, Power and Thermocouple Options	24
Kiln Shelves and Posts	25

L&L FEATURES

Signature L&L Features	26-27
------------------------------	-------

LEAD TIMES

All lead times for each model are listed on our website on each model page and are specific for each model. We keep these up-to-date and the website can be relied on for accuracy.

GENERAL DIMENSION DRAWINGS

Each model page on the website has a specific General Dimension Drawing with almost all dimensions and specifications you might need before ordering.



EASY-FIRE KILNS

L&L's Flagship Kilns



This is the classic L&L pottery kiln used by most of our customers. Now with a new angled control panel for easy viewing.



Easy-Fire Kilns include Genesis Touchscreen and Zone Control

- Genesis Touch Screen Control with Dynamic Zone Control is standard (See page 6).
- Hard Ceramic Element Holders
- Cone 10 • 2350°F • 1290°C (except for single phase e28T-3 models)
- 3" Brick
- Full-View Solid Peephole Plugs
- Stainless Spring Hinge - Wide Open for Easy Loading
- Full-Support Heavy-Duty 14 Gauge Aluminized Stand
- Fold Down Angled Panel for Easy Maintenance
- c-MET-us listed to UL499 Standards

Features & Benefits

CONSTRUCTION

Sectional: Made of 9" high sections with a reversible bottom and a spring-hinged top. The case is stainless steel wrapped around 3" of K23 highly insulating firebrick with 3 adjusting screw clamps per section. Easy to move: hotkilns.com/assemble-easy-fire



Brushed stainless steel spring hinge (on 23" & 28" diameter models) makes opening easy while still allowing lid to be supported and providing an unobstructed opening for easy loading. Safety pin prevents lid from closing while loading.



Ceramic element terminals make element changes easy using a simple wrench.

A heavy 14 gauge full support solid stand with multiple bends for strength. Includes molded plastic feet protectors.

Full-view solid ceramic peephole plugs are 1" diameter non-tapered with heat-locked head. There is one for each section.

ELEMENT HOLDER SYSTEM

Patented hard ceramic element holders protect brick and elements from wear and loading damage. All-ceramic element connection block and hard holders makes changing elements easy.

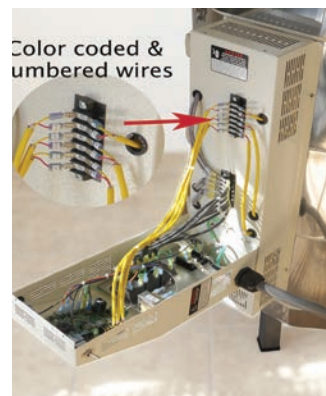
GENESIS TOUCHSCREEN WITH DYNAMIC ZONE CONTROL



The Genesis control includes a touchscreen interface and WIFI connectivity. The intuitive interface is easy to use and understand. A free phone app allows you to monitor your kiln remotely. (See page 6).

PIGGY-BACKED COOL-FIRE CONTROL PANEL

All controls and components are in a separate angled control panel that is piggy-backed on top of the element connection box. Both boxes are hinged and open and remove easily. A layer of insulation plus the separate control box keep the controls and relays cool. Power wires are oversized to run cool. On/off switch and control fuse included.



INSTRUCTIONS AND SUPPORT

Complete visual instructions with control reference, process information, assembly, troubleshooting, and parts list. Web videos show how to use the control. (hotkilns.com/videos)

Limited 3 year warranty. (hotkilns.com/warranty)

View all features of L&L Kilns at hotkilns.com/features

Options

FURNITURE KIT

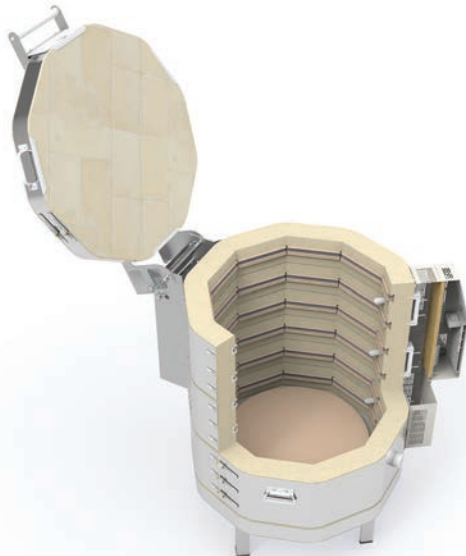
Includes Cone 11 full shelves and half shelves as listed below. e14S-3, e18S-3, and e18M-3 models get the Small Square Post Kit and all others get the Large Square Post Kit (See page 25) plus heat-resistant gloves. Prices below.



VENT-SURE DOWNDRAFT KILN VENT (PAGE 23)

Vent-Sure 130 CFM downdraft vent pulls air down to bottom of kiln to improve temperature uniformity and vent corrosive fumes. Bypass collection box mounted on kiln allows adjustment of venting. Fan motor, mounted away from the kilns, stays cool and no vibration transmitted to the kiln.

Vent-Sure (120 volts) (M-V-VENT/00)\$725
Vent Doubler (M-V-VENT/DB)\$220
Vent Control (M-V-CNTL/00)\$190



VOLTAGE OPTIONS (PAGE 24)

Order 240 or 208 volts, single or three phase, or international voltages. KW, amperage, and fuse size for each voltage below. 480 volts is not available. No Charge for any voltage options.

ROLLING KILN STAND (PAGE 7)



L&L's rolling kiln stand features heavy gauge (14 ga) galvanized steel construction with multiple bends for extra strength, steel swivel locking casters, integrated vent collection box support, and guide rails for the kiln. Each size is fitted to the kiln.

Rolling Stand for 8 Sided Kiln (A-J-18RL/00)\$325
Rolling Stand for 10 Sided Kiln (A-J-23RL/00).....\$325
Rolling Stand for 12 Sided Kiln (A-J-28RL/00).....\$325

CONTROL OPTIONS (PAGE 6 & 24)

Type S Platinum Thermocouples (T-G-SJUP/UG)\$335 each
Pyrocl metallic Thermocouples (T-G-E23M/UG).....\$58 each

Note: SSRs and high limit controls are available by special order.

ELEMENT OPTIONS (PAGE 7)

Quad Element Option: Four rows of elements for each 9" kiln section (two rows in the 4.5" middle section on the M Series kilns). Maximum element life for constant high-firing. Prices below. S/O means special order.

APM Elements See hotkilns.com/apm

Model No.	Kiln Price	Furn Kit	Quad Elem	No. Shelves F=full, H=half	Inside Diam	Inside Height	Cubic Feet	Exterior Dim (in)	240/1 KW-Amp-Fuse	240/3 KW-Amp-Fuse	208/1 KW-Amp-Fuse	208/3 KW-Amp-Fuse	Lbs Kiln	Lbs w/Kit
e14S-3	\$2500	\$240	S/O	12" (3F)	13.5"	18"	1.5	23W x 51H x 27D	3.8-16-20	no 3 phase	3.8-18.5-25	no 3 phase	150	175
e18S-3	\$2875	\$360	S/O	15" (1F, 4H)	16.5"	18"	2.5	28W x 55H x 30D	5.7-23.9-30	5.7-20.7-30	5.0-23.9-30	5.0-20.8-30	235	285
e18M-3	\$3125	\$360	S/O	15" (1F, 4H)	16.5"	22.5"	3.2	28W x 60H x 30D	8.0-33.3-50	8.0-23.1-30	8.0-38.5-50	8.0-26.6-40	260	310
e18T-3	\$3800	\$515	S/O	15" (2F, 4H)	16.5"	27"	3.7	28W x 63H x 30D	8.4-35.0-50	8.4-20.2-30	8.4-40.4-60	8.4-23.3-30	280	340
e23S-3	\$3975	\$540	\$335	20" (6H)	22.5"	18"	4.4	30W x 59H x 40D	9.5-39.4-50	9.5-34.1-50	8.3-40.0-50	8.3-34.6-50	320	395
e23M-3	\$4475	\$540	\$410	20" (6H)	22.5"	22.5"	5.5	30W x 63H x 40D	11.5-48.0-60	11.5-33.3-50	10.0-48.0-60	11.5-38.4-50	350	425
e23T-3	\$4800	\$650	\$490	20" (8H)	22.5"	27"	6.7	30W x 68H x 40D	11.5-48.0-60	11.5-27.7-40	10.0-48.0-60	11.0-30.5-40	380	470
e28S-3	\$4750	\$725	\$440	25-1/2" (6H)	28"	18"	6.8	35W x 65H x 46D	11.5-47.9-60	11.5-41.5-60	10.0-48.0-60	10.0-41.6-60	410	520
e28M-3	\$5100	\$725	\$550	25-1/2" (6H)	28"	22.5"	8.5	35W x 69H x 46D	11.5-48.0-60	16.6-40.0-50	10.0-48.0-60	14.3-39.8-50	445	555
e28T-3	\$5575	\$875	\$650	25-1/2" (8H)	28"	27"	10.2	35W x 74H x 46D	11.5-48.0-60	16.6-40.0-50	10.0-48.0-60	14.3-39.8-50	475	610

S/O means Special Order: Contact factory for availability, price and lead time.

Cone Rating: All models are rated to Cone 10 except the single phase e28T-3 (rated to Cone 8 at 240V/1 Phase, Cone 5 at 208V/1 Phase, but Cone 10 for any 3 phase kiln) and the e28M-3 (rated at Cone 8 for 208V/1 phase). If planning continuous Cone 6 firings on a 10 cubic foot single phase kiln we recommend the eQuad-Pro eQ2827-3 (page 9) or the Jupiter JD2927-3 (page 12) (both have more KW than the e28T-3 in their single phase versions).

Plugs on US Models only: 6-50 on single phase and 15-50 on three phase except for the e14S-3 which has a 6-20P Plug for 240 volt models or a 14-30P Plug for 208 volt models.

UL Listing: c-MET-us listed to UL499 standards. **CE Listing:** CE Listed models are available.

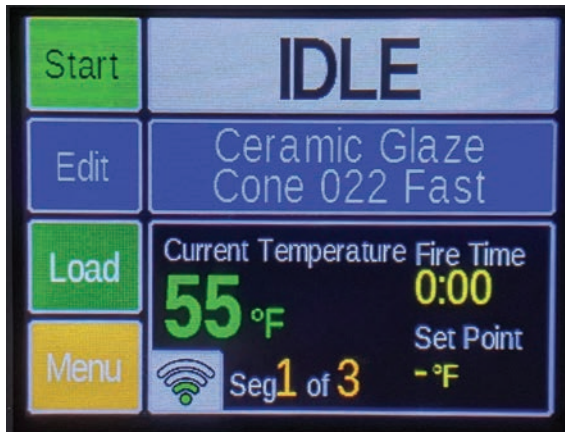
More: See Easy-Fire Brochure and General Dimensions on each kiln page on our website for more details.

FOR THE ULTIMATE IN KILN CONTROL

Genesis Touch Screen Control Includes a FREE Phone Kiln Aid App NOW STANDARD ON ALL L&L KILNS (except School-Master)

GENESIS TOUCH SCREEN CONTROL

The Genesis control includes a touchscreen interface and WIFI connectivity. The intuitive interface is easy to use and understand. A free phone app allows you to monitor your kiln remotely. (hotkilns.com/genesis)

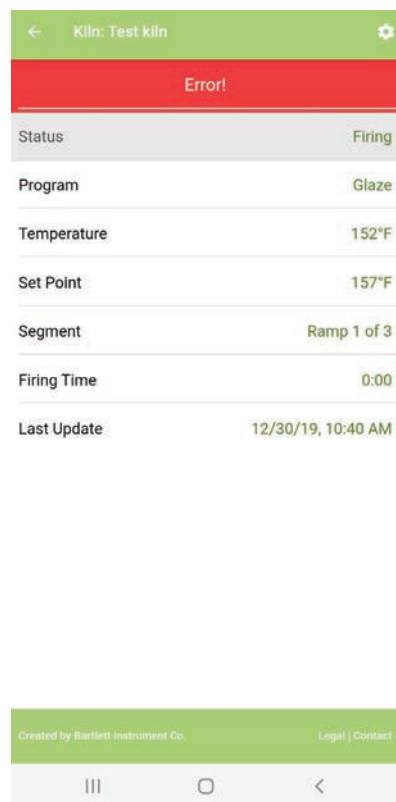


GENESIS FEATURES

- Touch-screen intuitive technology for easy user interface.
- Easy-to-follow screen descriptions.
- Different user-interface levels, which can be set to match the user's firing knowledge.
- Graphical display of the firing process right at the controller. This means you can graph the firing in real time and compare the program with actual results.
- Glass programs included.
- Store up to 30 custom user programs.
- Up to 32 segments per program.
- Ability to make adjustments during a firing such as add segments, add temperature, and skip segments.
- Built in diagnostics testing
- Alarm
- Error Codes
- WiFi enabled for easy software updating.
- Included Phone App allows you to monitor kiln operation remotely (with no subscription fee).



See a graph of your firing before you fire, while you fire and after you fire.



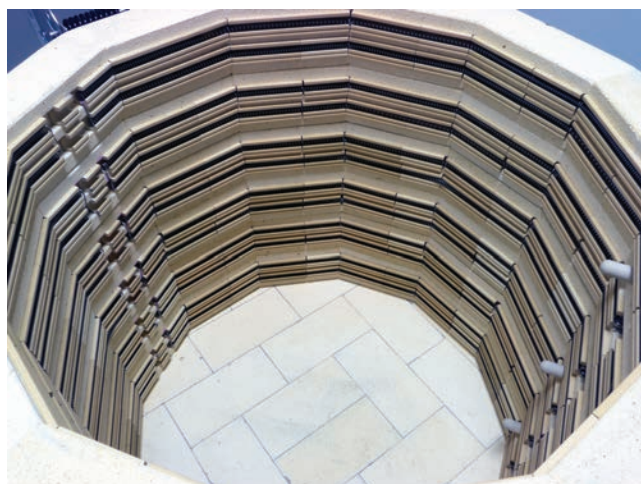
This shows the view you get on your phone with the Kiln Aid Phone app. Simply download the Kiln Aid phone app from your Google Play Store or Apple App Store, add your kiln, and begin monitoring as your kiln progresses through a firing. See temperatures, where you are in a program cycle, what program you are firing and error notifications.

QUAD ELEMENTS SUPERCHARGE YOUR KILN



- Four rows of elements for each 9" kiln section.
- For maximum high-fire element life.
- More even firing
- The combination of 1/2" diameter element coils, the doubled surface area of the Quad element design, and superior heat transfer of L&L's patented ceramic element holders, make this the best element system in the world today.

Quad elements are available as a standard option on most L&L kilns that are 23" and larger. They are standard on eQuad-Pro and JH Series. (hotkilns.com/quad-elements)



APM SINTERED ELEMENTS

For even greater element life we offer APM alloy elements. This is a higher temperature alloy and provides approximately 3 times the life of regular elements - but are very expensive. (hotkilns.com/apm)

ROLLING STANDS SAVE SPACE IN YOUR STUDIO

ROLLING STAND UPGRADE

ROLLING KILN STAND

L&L's rolling kiln stand features heavy gauge (14 ga) galvanized steel construction with multiple bends for extra strength, steel swivel locking casters, integrated vent collection box support, and guide rails for the kiln. Each size is fitted to the kiln.

Important special caution plates are riveted to three sides of the stand. The vent collection box is not included but, when you order a Vent-Sure vent system the longer duct is included with the system.

Rolling Stand for 8 Sided Kiln (A-J-18RL/00)\$325
Rolling Stand for 10 Sided Kiln (A-J-23RL/00).....\$325
Rolling Stand for 12 Sided Kiln (A-J-28RL/00).....\$325



SCHOOL-MASTER

Made For Schools

For busy
school
teachers who
want a simple
control.



SCHOOL-MASTER KILNS ARE WARRANTED FOR FIVE YEARS!

School-Master Kilns are super-durable and include all of the easy-maintenance features of the Easy-Fire kilns. For simplicity, however, School-Master kilns feature the intuitive Genesis Mini kiln control that has a standard Bisque and Glaze program tuned to the needs of most K-12 programs. Temperature, heating and cooling rate, delay time and soak time can all be easily modified. In addition, for more advanced users, there are many custom programs. The control is single zone and the kilns have graded elements. Because there are only two sizes the element resistance is well-tuned for good performance. The School-Master kilns are limited to low-fire operation.

Model No.	Kiln Price	Furn Kit	No. of Shelves All Half Shelves	Inside Diam	Inside Height	Cubic Feet	Exterior Dimensions	240/1 KW-Amp-Fuse	240/3 KW-Amp-Fuse	208/1 KW-Amp-Fuse	208/3 KW-Amp-Fuse	Lbs Kiln	Lbs w/Kit
SM23T-3	\$4800	\$650	20" (8H)	22.5"	27"	6.7	30W x 68H x 40D	11.5-48.0-60	11.5-27.7-40	10.0-48.0-60	11.0-30.5-40	380	470
SM28T-3	\$5575	\$875	25.5" (8H)	28"	27"	10.2	35W x 74H x 46D	11.5-48.0-60	16.6-40.0-50	10.0-48.0-60	14.3-39.8-50	480	615

Cone Rating: All models rated for Cone 6 except for the single phase 208 volt SM28T-3, which is rated for Cone 5. If planning continuous Cone 6 firings on a 10 cubic foot single phase kiln we recommend the eQuad-Pro eQ2827-3 (page 9) or the Jupiter JD2927-3 (page 12-13) because they have more power. **Plugs on US Models only:** 6-50 on single phase and 15-50 on three phase. **UL Listing:** c-MET-us listed to UL499 standards. **CE Listing:** CE Listed models are available. **More:** See School-Master Brochure and General Dimensions on each kiln page on our website for more details.

Features & Benefits

SPECIAL FIVE-YEAR LIMITED WARRANTY

(hotkilns.com/five-year-warranty)

● GENESIS MINI KILN CONTROL

Touchscreen for ease of operation. Free app for monitoring with WiFi. Single zone.



● Cone 6 • 2230°F • 1220°C (except for 208 volt single phase SM28T-3 model)

● Single zone with graded elements

● 3" Brick

● Includes all other features of the Easy-Fire Kiln Series

Options

FURNITURE KIT

Includes Cone 11 full shelves and half shelves as listed below plus a square post kit which includes six each 1/2", 1", 2", 4", 6" and 8" high 1-1/2" square cordierite posts plus heat-resistant gloves. Prices below.

VENT-SURE DOWNDRAFT KILN VENT (PAGE 23)

Vent-Sure (120 volts) (M-V-VENT/00).....\$725

Vent Doubler (M-V-VENT/DB).....\$220

(NOTE: The vent control is not available on this kiln)

VOLTAGE & CONTROL OPTIONS

Voltage: Order 240 or 208 volts, single or three phase, or international voltages. KW, amperage, and fuse size for each voltage below. 480 volts is not available. No Charge for any voltage options.

ROLLING STANDS (See page 7)

eQUAD-PRO KILNS

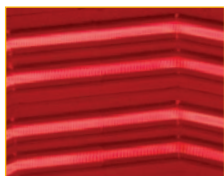
Super-Duty High Production Kilns

The eQuad-Pro sets a new standard in production kilns.



QUAD ELEMENT SYSTEM INCLUDED

Shown is the inside of an eQuad-Pro while firing. Notice how the element holders glow and disperse the radiant heat. The large diameter elements (both of the wire gauge and outside diameter of the element coil), coupled with the unique



glowing feature of the hard dense ceramic element holders make these elements last for a very long time.

(hotkilns.com/quad-elements)

Optional APM Elements: See hotkilns.com/apm for pricing.

Features & Benefits

- Cone 10 • 2350°F • 1290°C - with extra power with branch fusing for high production and dense loads
- Quad element system (four rows of super heavy-gauge elements per 9" high section)
- 3" K23 brick
- Genesis Touch Screen Control with Dynamic Zone Control is standard (See page 6).
- Piggy-back cool-fire control panel like Easy-Fire
- Hard ceramic element holders
- Type K 8 GA thermocouples with ceramic protection tubes
- Full support 14 gauge aluminized steel stand
- Solid peephole plugs with full 1" view
- "Easy-Lift, Easy-Load" stainless steel spring hinge system with full-support when door is up and tilted back (there are no support bars to get in the way of loading)
- Three-year Limited Warranty

Options

FURNITURE KIT

Cone 11 full shelves and half shelves as listed below plus a square post kit plus heat-resistant gloves. Prices below.

VENT-SURE DOWNDRAFT KILN VENT (PAGE 23)

Vent-Sure (120 volts) (M-V-VENT/00)\$725
Vent Doubler (M-V-VENT/DB)\$220
Vent Control (M-V-CNTL/00)\$190

VOLTAGE & CONTROL OPTIONS (PAGE 6 & 24)

Voltage: Order 240 or 208 volts, single or three phase, or international voltages. KW, amperage, and fuse size for each voltage below. 480 volts is not available. No Charge for any voltage options.

SSR Power Control for eQ2327-3 & eQ2827-3\$1950
SSR Power Control for eQ2836-3\$2350
High Limit Back Up Control (N-G-PKHL/00)\$875
Back up Contactors Three-Section Kilns (N-G-BCJ3/00).....\$305
Back up Contactors Four-Section Kilns (N-G-BCJ4/00).....\$390
Type S Platinum Thermocouples (T-G-SJUP/UG) \$340 each
Pyrocl metallic Thermocouples (T-G-E23M/UG)..... \$58 each

Model No.	Kiln Price	Furn Kit	No. of Shelves All Half Shelves	Inside Diam	Inside Height	Cubic Feet	Exterior Dimensions	240/1 KW-Amp-Fuse	240/3 KW-Amp-Fuse	208/1 KW-Amp-Fuse	208/3 KW-Amp-Fuse	Lbs Kiln	Lbs w/Kit
eQ2327-3	\$5875	\$650	20" (8H)	22.5"	27"	6.7	30W x 69H x 40D	13.4-56.0-70	13.4-32.4-50	11.7-56.0-70	11.7-32.4-50	395	485
eQ2827-3	\$6450	\$875	25.5" (8H)	28"	27"	10.2	35W x 74H x 49D	15.0-62.3-80	15.0-36.0-50	15.0-71.9-90	15.0-41.5-60	515	650
eQ2836-3	\$7550	\$1050	25.5" (10H)	28"	36"	13.6	35W x 83H x 49D	19.0-79.2-100	19.0-51.5-70	19.0-91.3-125*	19.0-60.4-80	605	770

*Note: Special model eQ2836-X-208-1P is available with 16.6 KW, 208 Volt/1 Phase, 80 amps for a 100 amp fuse.

More: See eQuad Brochure and General Dimensions on each kiln page on our website for more details. All models are direct wired with no cords. For controls see hotkilns.com/dynatrol and hotkilns.com/zone. Listings: cMET-us listed to UL499.

JH SERIES

Crystalline Glaze Kilns

This is the "Thoroughbred" of kilns. Designed specifically for Crystalline Glaze firing - high, fast, responsive and precise.



Not
UL499
Listed

Features & Benefits

- Designed specifically for firing crystalline glaze with fast heat up, fast cool down to freeze crystals and the ability to soak without prematurely aging elements
- Cone 12 • 2400°F • 1315°C
- Includes 2-1/2" of K25 2500°F firebrick on sides and bottom with a 3" thick top
- Approximately 25% more power than base models
- Quad element holder system with super heavy-duty elements
- Type S platinum thermocouples included as standard
- Genesis Touch Screen Control with Dynamic Zone Control is standard (See page 6).
- Includes other features that are standard on the base models
- Three-year Limited Warranty

Options

FURNITURE KIT

Includes Cone 11 full shelves and half shelves as listed below. JD18-JH model gets the Small Square Post Kit and all others get the Large Square Post Kit (See page 25) plus heat-resistant gloves. Prices below.

VENT-SURE DOWNDRAFT KILN VENT (PAGE 23)

Vent-Sure (120 volts) (M-V-VENT/00)\$725
Vent Doubler (M-V-VENT/DB)\$220
Vent Control (M-V-CNTL/00)\$190

VOLTAGE, CONTROL & ELEMENT OPTIONS (PAGE 6 & 24)

Voltage: Order 240 or 208 volts, single or three phase, or international voltages. KW, amperage, and fuse size for each voltage below. 480 volts is not available. No Charge for any voltage options.

SSR Power Control for 2 Circuit Models.....\$1375
SSR Power Control for 3 Circuit Models.....\$1950
High Limit Back Up Control (N-G-PKHL/00)\$875
Back up Contactors Two-Section Kilns (N-G-BCJ2/00)\$210
Back up Contactors Three-Section Kilns (N-G-BCJ3/00).....\$305
APM ElementsPrices below

JH Kilns include *FREE* Zone Control!

A SPECIAL KILN DESIGNED JUST FOR CRYSTALLINE GLAZE FIRING

The JH kilns feature special higher temperature K25 firebrick for extra high cone 12 firing (and faster cool-down), extra power for fast heat up, "Quad" element configuration for extra element area, super heavy-duty thick elements to hold up to the special rigors of crystalline firing, minimal insulation to allow for fast cool down, and type S thermocouples for long life. Custom variations on the basic design such as more insulation, APM elements, more power and special sizes are available by special quote.

Note that the JD2927-JH uses a floor standing large DaVinci control panel and also includes a lid brace because of the 2.5" brick insulation.

Model No.	Kiln Price	APM Elements	Furn Kit	No. of Shelves F=full, H=half	Inside Diam	Inside Height	Cubic Feet	240/1 KW-Amp-Fuse	240/3 KW-Amp-Fuse	208/1 KW-Amp-Fuse	208/3 KW-Amp-Fuse	Lbs Kiln	Lbs w/Kit
JD18-JH	\$4350	\$775	\$360	15" (1F, 4H)	17.5"	18"	2.6	8.8-36.7-60	8.8-31.7-50	8.8-42.3-60	8.8-36.8-50	255	305
e23S-JH	\$5250	\$850	\$540	20" full (6H)	23.5"	18"	4.7	10.5-47.9-60	10.5-41.5-50	10.0-48.0-60	10.0-41.6-50	335	415
JD230-JH	\$8075	\$1225	\$650	20" full (8H)	23.5"	27"	7.0	13.7-57.0-80	13.7-32.9-50	12.5-60.0-80	12.5-34.7-50	410	510
JD2927-JH	\$10200	\$1375	\$875	25.5" (8H)	29"	27"	10.3	18.0-75.2-100	18.0-43.5-60	18.0-86.7-125	18.0-50.1-70	510	645

More: See JH Series Brochure and General Dimensions on each kiln page on our website for more details. Plugs vary with model, voltage and phase. See Specification sheet.

Listings: JH Series kilns are not UL499 Listed. They may be unsuitable for commercial spaces where Nationally Recognized Listing is required.

DL SERIES

11"D x 9"H Test Kilns



Features & Benefits

The **DL Series** is a small test kiln available in 120, 208 or 240 volts. Genesis Mini Touch Screen Control is standard (See page 6). It has the full range of premium L&L features such as hard ceramic element holders, Type K 8 gauge thermocouple with ceramic protection tube, full support 14 gauge aluminized steel stand, solid peephole plug with full 1" view, and three-year limited warranty. Features 3" Top & bottom.

Specifications

Temperature: (See below) **Cubic Feet:** 0.5

Inside Diameter: 11" **Inside Height:** 9"

Outside Dimensions: 24" W x 21" D x 40" H

More: See hotkilns.com/spec-doll for additional information like shipping dimensions, electrical ratings, fuse sizes and wire connection sizes.

NOTE: The 120 volt versions should not be used for high production (more than once a week) to their maximum temperature range - the element life will not be acceptable under those conditions. 208 volt and 240 volt versions are rated to Cone 10 under high production conditions.

Options

Furniture Kit: Includes two 9" diameter full shelves plus Doll Square Ceramic Post Kit (Four each 1/2", 1", 2", 4" square posts).

APM Elements: See hotkilns.com/apm

Model No.	Kiln Price	Furn Kit	Cone Rating	Watts	Amps	Volts	Fuse	Plug	Lbs Kiln	Lbs w/Kit
DL11-D	\$1875	\$180	5	1800	15	120	20	5-15	145	170
DLH11-D	\$1875	\$180	6	2160	18	120	25	5-20	145	170
DLH11-DX-240	\$1875	\$180	10	2800	11.7	240	15	14-30	145	170
DLH11-DX-208	\$1875	\$180	10	2800	13.5	208	20	14-30	145	170

Listings: Listings: cMET-us listed to UL499.

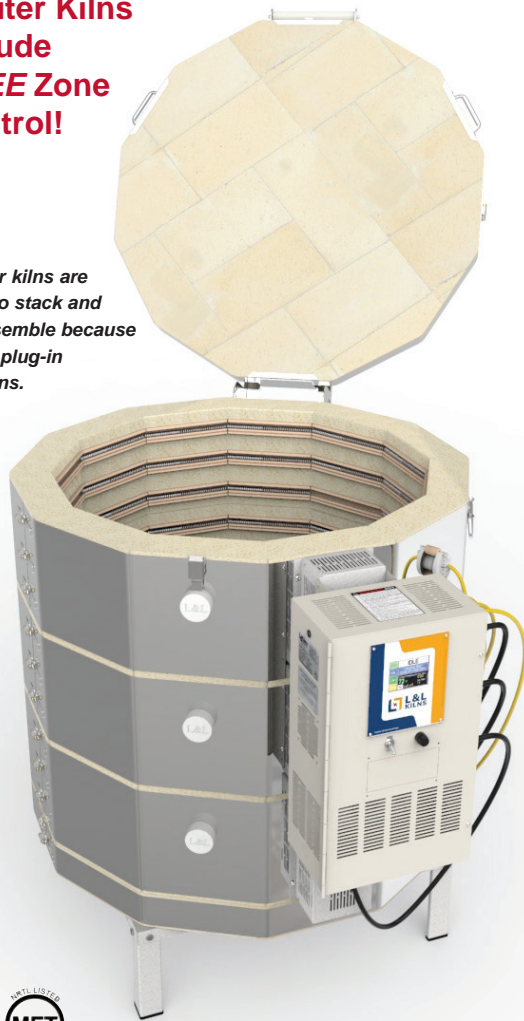
More: See Doll/Test Brochure and General Dimensions on each kiln page on our website for more details.

JUPITER KILNS

Easy To Take Apart & Highly Customizable

Jupiter Kilns include FREE Zone Control!

Jupiter kilns are easy-to stack and disassemble because of the plug-in sections.



- Sections can be added later or removed for smaller loads
- Genesis Touch Screen Control with Dynamic Zone Control is standard (See page 6). (2 zones in 18" high models, 3 zone in all other models)
- Hard Ceramic Element Holders
- Most Models are Cone 10 • 2350°F • 1290°C (See grid)
- 3" Brick
- Full-View Solid Peephole Plugs
- Stainless "Easy-Lift, Easy-Load" Spring Hinge
- Wide Open Easy Loading
- Heavy-Duty 14 Gauge Aluminized Stand
- Removable Panel for Easy Maintenance
- c-MET-us listed to UL499 Standards

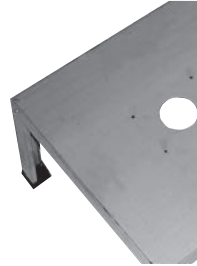
Features and Benefits

CONSTRUCTION

Sectional: Made of 9" high sections with a reversible bottom and a spring-hinged top (23" & 28" models). The case is stainless steel wrapped around 3" of K23 highly insulating firebrick with 3 adjusting screw clamps per section.



Brushed stainless steel spring hinge (on 23" & 28" diameter models) makes opening easy while still allowing lid to be supported while providing an unobstructed opening for easy loading. Safety pin prevents lid from closing while loading.



Ceramic element terminals make element changes easy using a wrench.

A heavy 14 gauge full support solid stand with multiple bends for strength. Includes molded plastic feet protectors.

Full-view solid ceramic peephole plugs are 1" diameter non-tapered with heat-locked head (3/4" on JD2900 models). There is one for each section.

ELEMENT HOLDER SYSTEM

Patented hard ceramic element holders protect brick and elements from wear and loading damage. All-ceramic element connection block and hard holders makes changing elements easy.

GENESIS TOUCHSCREEN WITH DYNAMIC ZONE CONTROL

The Genesis control includes a touchscreen interface and WIFI connectivity. The intuitive interface is easy to use and understand. A free phone app allows you to monitor your kiln remotely. (See page 6).

SEPARATE PLUG-IN CONTROL PANEL

The Jupiter control panel is separate from the kiln. Keeps



controls and relays cool. All sections plug into it. Hinged and removable for easy maintenance. On/off switch and control fuse included.

INSTRUCTIONS AND SUPPORT

Complete visual instructions with control reference, process information, assembly, troubleshooting, and parts list. Web videos show how to use the control. (hotkilns.com/videos)

Limited 3 year warranty. (hotkilns.com/warranty)

You can view all features of L&L Kilns at hotkilns.com/features

Options

FURNITURE KIT

Includes Cone 11 full shelves and half shelves as listed below. JD18-3 models get the Small Square Post Kit and all others get the Large Square Post Kit (See page 25) plus heat-resistant gloves. Prices below.



VENT-SURE DOWNDRAFT KILN VENT (PAGE 23)

Vent-Sure 130 CFM downdraft vent pulls air down to bottom of kiln to improve temperature uniformity and vent corrosive fumes. Bypass collection box mounted on kiln allows adjustment of venting. Fan motor, mounted away from the kilns, stays cool and no vibration transmitted to the kiln.

Vent-Sure (120 volts) (M-V-VENT/00)\$725
Vent Doubler (M-V-VENT/DB)\$220
Vent Control (M-V-CNTL/00)\$190

VOLTAGE OPTIONS (PAGE 24)

240 or 208 volts, single or three phase, or international voltages. KW, amperage, and fuse size for each voltage below. No Charge except for 480 volts.

480 volts/3 phase (available only on JD2900 Series)\$1050
NEMA 1 Panel (recommended for 480 volts).....\$1050

Power bottoms are available by special order for 23" and 28" diameter kilns.



ROLLING KILN STAND (PAGE 7)

L&L's rolling kiln stand features heavy gauge (14 ga) galvanized steel construction with multiple bends for extra strength, steel swivel locking casters, integrated vent collection box support, and guide rails for

the kiln. Each size is fitted to the kiln.

Rolling Stand for 8 Sided Kiln (A-J-18RL/00)\$325
Rolling Stand for 10 Sided Kiln (A-J-23RL/00).....\$325
Rolling Stand for 12 Sided Kiln (A-J-28RL/00).....\$325

CONTROL OPTIONS (PAGE 6 & 24)

SSR Power Control for 2 Circuit Models.....\$1375
SSR Power Control for 3 Circuit Models.....\$1950
SSR Power Control for 4 Circuit Models.....\$2350
SSR Power Control for 5 Circuit Models.....\$2775
SSR Power Control for 6 Circuit Models.....\$3150
Type S Platinum Thermocouples (T-G-SJUP/UG) \$340 each
Pyroclil metallic Thermocouples (T-G-E23M/UG)..... \$58 each
High Limit Back Up Control (N-G-PKHL/00)\$875
Back up Contactors Two-Section Kilns (N-G-BCJ2/00)\$220
Back up Contactors Three-Section Kilns (N-G-BCJ3/00).....\$305
Back up Contactors Four-Section Kilns (N-G-BCJ4/00).....\$390
Back up Contactors Five-Section Kilns (N-G-BCJ5/00).....\$465

ELEMENT OPTIONS (PAGE 7)

Quad Element Option: Four rows of elements for each 9" kiln section. Maximum element life for constant high-firing. Prices below. S/O means special order only.

APM ElementsSee hotkilns.com/apm

SEE PAGES 22-25 FOR THESE AND MORE OPTIONS

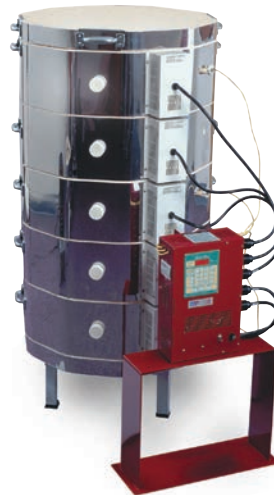
PULL-APART OPTION FOR SCULPTURE

Any Jupiter or DaVinci kiln can be made with the Pull-Apart Option.

Includes floor mount stand for control panel, lift off lid with extra handles but no hinge.

This option allows the entire kiln to be dismantled to make it easy to load large sculptural pieces. The kiln sections are unplugged and then taken off one at a time.

There is no charge for this option. However, If you want the "Easy-Lift, Easy-Load" spring hinge on the Jupiter Series there is a \$400 extra charge (S-G-HNGE/OP).



More at hotkilns.com/pull-apart-kilns

Model No.	Kiln Price	Furn Kit	Quad No. of Elem	F=full, H=half	Inside Diam	Inside Height	Cubic Feet	Cone Rating	240/1 KW-Amp-Fuse	240/3 KW-Amp-Fuse	208/1 KW-Amp-Fuse	208/3 KW-Amp-Fuse	Lbs Kiln	Lbs w/Kit
JD18-3	\$2950	\$360	S/O	15" (1F, 4H)	16.5"	18"	2.5	10	5.5-23.0-30	5.5-19.9-30	5.5-26.5-30	5.5-23.0-30	230	280
JD18X-3	\$4125	\$515	S/O	15" (2F, 4H)	16.5"	27"	3.7	10	8.3-34.5-50	8.3-19.9-30	8.3-39.8-50	8.3-23.0-30	270	320
JD23V-3	\$3950	\$540	\$340	20" (6H)	22.5"	18"	4.5	5	7.0-29.3-40	7.0-25.4-40	6.1-29.3-40	6.1-25.4-40	315	340
JD230V-3	\$4900	\$650	\$500	20" (8H)	22.5"	27"	6.7	10	10.6-44.0-60	10.6-25.4-40	9.1-44.0-60	9.1-25.4-40	385	470
JD236V-3	\$6025	\$750	\$650	20" (10H)	22.5"	36"	8.9	10	14.1-58.6-80	14.1-38.1-50	12.2-58.6-80	12.2-38.1-50	460	545
JD245V-3	\$7100	\$850	\$825	20" (12H)	22.5"	45"	11.1	10	17.6-73.3-100	17.6-50.8-70	15.2-73.3-100	15.2-50.8-70	540	650
JD2918-3	\$5475	\$725	\$420	25.5" (6H)	28"	18"	6.8	5	9.1-38.0-50	9.1-32.9-50	8.3-40.0-50	8.3-34.6-50	380	480
JD2927-3	\$6825	\$875	\$625	25.5" (8H)	28"	27"	10.2	10	13.7-57.0-80	13.7-32.9-50	12.5-60.0-80	12.5-34.6-50	450	575
JD2936-3	\$8850	\$1050	\$850	25.5" (10H)	28"	36"	13.6	10	18.2-76.0-100	18.2-49.3-70	16.6-80.0-100	16.6-52.0-70	565	715
JD2945-3	\$10475	\$1200	\$1050	25.5" (12H)	28"	45"	17.0	10	22.8-95.0-125	22.8-65.8-90	20.8-100.0-125	20.8-69.3-90	645	820

Note About EZ Models: All the J2300 series are available with higher watts "EZ" elements (the same elements used in the e23T kilns) at no extra charge. See web and specification sheet for details.

Cone Rating: See above chart. **More:** See Jupiter Brochure and General Dimensions on each kiln page on our website for more details.

Power Hookup: Plugs on kilns that have less than 48 amps, otherwise direct wired.

DAVINCI KILNS

Square & Rectangular Top-Loading Kilns

This is L&L's classic production kiln. Also great for Universities and high volume High School programs.

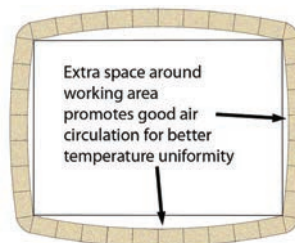


DaVinci Kilns include *FREE* Zone Control!

- Genesis Touch Screen Control with Dynamic Zone Control is standard (See page 6). (2 zones in 18" high models, 3 zone in all other models)
- Cone 10 • 2350°F • 1290°C (All models)
- Counterbalanced Lid with springs inside of tubes
- Safety Latches for Lid
- Welded angle-iron powder-coated stand and hinge
- 3" brick with all brick construction (including lid)
- Strong arched sides with extra space added to interior dimensions for good air circulation
- Three elements per 9" section
- Ceramic Element Terminals
- Hard ceramic element holders
- Plug in kiln sections (except 480 volt models)
- Floor mounted control panel (except for X2300 series)
- c-MET-us listed to UL499 Standards

Features & Benefits

CONSTRUCTION



Sectional: Made of 9" high sections with a reversible bottom. The case is stainless steel wrapped around 3" of K23 highly insulating firebrick with 3 adjusting screw clamps per section.

Strong arched sides with extra space added to interior dimensions for good air circulation.

Spring-hinged counterbalanced top. Safety latch prevents lid from closing while loading. Design allows extra sections to be added and adjusted.

Full-view solid ceramic peephole plugs are 3/4" diameter non-tapered with heat-locked head. There is one for each section.



ELEMENT HOLDER SYSTEM

Patented hard ceramic element holders protect brick and elements from wear and loading damage. All-ceramic element connection block and hard holders makes changing elements easy.

DYNAMIC ZONE CONTROL

The Genesis control with Zone Control includes a touch screen interface and WIFI connectivity added to the proven software of the DynaTrol. More programming options and memory. Free App available to monitor kiln via WiFi. (See page 6).

FLOOR STANDING PANEL

All controls and components are mounted in a separate control box mounted on the floor away from the kiln. Branch fused and neatly laid out circuits. On/off switch and control fuse included.

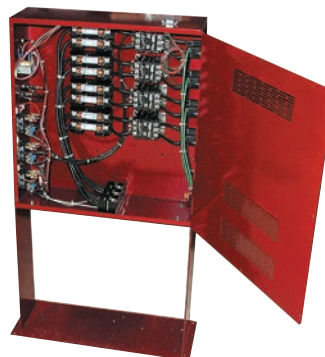
INSTRUCTIONS AND SUPPORT

Complete visual instructions with control reference,

process information, assembly, troubleshooting, and parts list. Web videos show how to use the control. (hotkilns.com/videos)

Limited 3 year warranty. (hotkilns.com/warranty)

You can view all features of L&L Kilns at hotkilns.com/features



Options

FURNITURE KIT

Includes Cone 11 shelves as listed below plus one to three post kits which includes six each 1/2", 1", 2", 4", 6" and 8" high 1-1/2" square cordierite posts plus heat-resistant gloves. Prices below.



CONTROL OPTIONS (PAGE 6 & 24)

SSR Power Control for 2 Circuit Models.....\$1375
 SSR Power Control for 3 Circuit Models.....\$1950
 SSR Power Control for 4 Circuit Models.....\$2350
 SSR Power Control for 5 Circuit Models.....\$2775
 SSR Power Control for 6 Circuit Models.....\$3150
 Type S Platinum Thermocouples (T-G-SJUP/UG) \$340 each
 Pyrocil metallic Thermocouples (T-G-E23M/UG) \$58 each
 High Limit Back Up Control (N-G-PKHL/00)\$875
 Back up Contactors Two-Section Kilns (N-G-BCX2/00).....\$525
 Back up Contactors Three-Section Kilns (N-G-BCX3/00)....\$625
 Back up Contactors Four-Section Kilns (N-G-BCX4/00).....\$725
 Back up Contactors Five-Section Kilns (N-G-BCX5/00).....\$875

VENT-SURE DOWNDRAFT KILN VENT (PAGE 23)

Vent-Sure (120 volts) (M-V-VENT/00).\$725 each
 Vent Doubler (M-V-VENT/DB)\$220
 Vent Control (M-V-CNTL/00)\$190

CRATING OPTIONS

See hotkilns.com/kiln-accessories/packing-options-davinci-kilns

VOLTAGE & POWER OPTIONS (PAGE 24)

XB and TB elements, which have a higher KW rating, are available on the 27", 36" and 45" high DaVinci kilns.

High Power Option NO CHARGE (N/C)

240 or 208 volts, single or three phase, or international voltages. KW, amperage, and fuse size for each voltage below. No Charge except for 480 volts. See page 24 for 480 volt description.

480 volts/3 phase\$1050
 NEMA 1 Panel (recommended for 480 volts).....\$1050

Model No.	Kiln Price	Power Botm	High Power	Furn Kit	Quad Elem	Shelves in Furn Kit	Post Kits	Inside W x D	Inside Height	Cubic Feet	External Dimensions	Stand KW	High KW	240/1 Fuse	240/3 Fuse	208/1 Fuse	208/3 Fuse	Lbs Kiln	Lbs w/Kit
XB2818-D	\$8,125	N/A	N/A	\$625	\$510	(4) 23" x 11.5"	(1)	26.5" Square	18"	7.3	59W x 74H x 46D	11.6	N/A	60	60	70	60	800	915
X2827-D	\$9,775	N/A	N/C	\$800	\$750	(6) 23" x 11.5"	(1)	26.5" Square	27"	11.0	59W x 84H x 46D	14.9	17.4	80	50	90	60	825	930
X2836-D	\$11,175	N/A	N/C	\$1250	\$1025	(8) 23" x 11.5"	(2)	26.5" Square	36"	14.6	59W x 93H x 46D	19.9	23.2	100	70	125	80	910	1045
X2845-D	\$12,300	N/A	N/C	\$1450	\$1250	(10) 23" x 11.5"	(2)	26.5" Square	45"	18.3	59W x 102H x 46D	24.9	29.0	125	90	150	100	1045	1205
XB3218-D	\$9,325	\$1275	N/A	\$775	\$525	(4) 28" x 14"	(1)	30.5" Square	18"	9.7	63W x 74H x 51D	14.2	N/A	80	70	90	80	800	915
X3227-D	\$10,900	\$1275	N/C	\$1000	\$800	(6) 28" x 14"	(1)	30.5" Square	27"	14.5	63W x 84H x 51D	18.0	21.3	100	60	125	70	1020	1170
X3236-D	\$12,625	\$1275	N/C	\$1475	\$1075	(8) 28" x 14"	(2)	30.5" Square	36"	19.4	63W x 93H x 51D	24.4	28.4	125	80	150	100	1120	1310
X3245-D	\$13,975	\$1275	N/C	\$1700	\$1350	(10) 28" x 14"	(2)	30.5" Square	45"	24.2	63W x 102H x 51D	30.5	35.5	175	125	200	125	1265	1495
TB2318-D	\$9,200	\$1525	N/A	\$775	\$575	(6) 22" x 11"	(1)	26.5" x 34.75"	18"	9.6	68W x 72H x 47D	15.3	N/A	80	70	100	80	905	1005
T2327-D	\$10,725	\$1525	N/C	\$1050	\$850	(9) 22" x 11"	(1)	26.5" x 34.75"	27"	14.4	68W x 84H x 47D	19.5	23.0	100	60	125	70	1035	1170
T2336-D	\$12,350	\$1525	N/C	\$1550	\$1125	(12) 22" x 11"	(2)	26.5" x 34.75"	36"	19.2	68W x 93H x 47D	26.0	30.7	125	90	150	100	1135	1315
T2345-D	\$13,700	\$1525	N/C	\$1825	\$1425	(15) 22" x 11"	(2)	26.5" x 34.75"	45"	24.0	68W x 102H x 47D	32.5	38.4	175	125	200	125	1285	1500
TB3418-D	\$9,700	\$1725	N/A	\$1200	\$650	(6) 28" x 14"	(2)	30.5" x 43.5"	18"	13.8	76W x 72H x 53D	19.9	N/A	100	90	125	100	1065	1215
T3427-D	\$11,625	\$1725	N/C	\$1600	\$1000	(9) 28" x 14"	(2)	30.5" x 43.5"	27"	20.7	76W x 84H x 53D	24.9	36.5	125	80	150	90	1215	1420
T3436-D	\$13,650	\$1725	N/C	\$1925	\$1350	(12) 28" x 14"	(2)	30.5" x 43.5"	36"	27.6	76W x 93H x 53D	33.3	39.9	175	125	200	125	1340	1615
T3445-D	\$16,050	\$1725	N/C	\$2675	\$1650	(15) 28" x 14"	(3)	30.5" x 43.5"	45"	34.6	76W x 102H x 53D	41.6	49.8	200	150	225	175	1505	1840

More: See DaVinci Brochure and General Dimensions on each kiln page on our website for more details. **Power Hookup:** Direct wired - no plugs. For controls see hotkilns.com/dynatrol and hotkilns.com/zone. **UL499:** Listed by MET to UL499 Standards. (N/A = Not available, N/C = No Charge)

Shipping: Protected with foam-in-place packaging for shipment by Common Carrier. Depending on the model there are either two or three cartons. Some smaller models can ship in skidded cartons. Ships from factory direct to customer.

Crating Options: See hotkilns.com/crating for crating charges.

eFL SERIES KILNS

Front-Loading Kilns



**eFL Series
Kilns include
FREE Zone
Control!**



- **Front-Loading**
- **Genesis Touch Screen Control with Dynamic Zone Control**
- **Arched Sides and Top**
- **Heat-balanced Insulation**
- **Hard Ceramic Element Holders**
- **Cone 10 • 2350°F • 1290°C**
- **Full-View Solid Peephole Plug**
- **Fold Down Panel for Easy Maintenance**
- **Door Switch**
- **Optional Casters for all models except the eFL2635**
- **c-MET-us listed**

Features & Benefits

CONSTRUCTION

Door: Horizontal swing door. Heavy-gauge metal case with easily changed brick section. Hinge is adjustable in two planes. Includes extra insulation, and easy-to-use toggle clamps. The entire door is removable.

Stand: Stand is included.

Construction: Stainless steel wrapped around brick clamped with adjustable screw clamps. Sides and top are arched for super-strength.

Assembly: Although these kilns are much lighter than a Hercules or an Easy-Load kiln they still take some effort to remove from the pallet and do some assembly work. The design allows for easier residential delivery. Please see the details: (hotkilns.com/eFL-shipping-checklist)

Door is easily removable. All models fit through a 31" wide by 75" high door. Stand is removable.

Insulation: 3" K23 firebrick. Extra 1" of microporus super backup insulation on door to balance heat distribution. K25 on back.

Door Element Safety Switch: Honeywell limit switch turns power off to elements when the door is open. Included as standard equipment.

Peephole Plug: One solid ceramic plug with heat-locked head. 1" diameter full-view non-tapered. Located in door center.

Safety Floor Mounts: Large metal brackets help stabilize kiln.

ELEMENT HOLDER SYSTEM

Element Holder: Patented hard ceramic element holders protect brick and elements from wear and loading damage.

Element Design: Quad heavy-duty elements on sides and back. Low watt density for long life.

Element Connections: Proprietary all-ceramic element connection block makes changing elements easy.

GENESIS ZONE CONTROL IN PIGGY-BACKED COOL-FIRE CONTROL PANEL

Uses the Easy-Fire Control or eQuad-Pro angled branch-fused panel.

INSTRUCTIONS AND SUPPORT

Complete visual instructions. Web videos show how to use the control. (hotkilns.com/videos). See hotkilns.com/efl-videos and the checklist at hotkilns.com/eFL-checklist for unpacking and assembly instructions

Limited 3 year warranty. (hotkilns.com/warranty)

Options

Furniture/Shelves Kit: Shelves are cone 11 high alumina shelves. Each post kit includes six each 1/2", 1", 2" 4", 6" and 8" high 1-1/2" square cordierite posts. All furniture kits include heat-resistant gloves. See below for pricing.

VENT-SURE DOWNDRAFT KILN VENT (PAGE 23)

Vent-Sure (120 volts) (M-V-VENT/00).....\$725
Vent Doubler (M-V-VENT/DB).....\$220
Vent Control (M-V-CNTL/00).....\$190

VOLTAGE & POWER OPTIONS (PAGE 24)

Order 240 or 208 volts, single or three phase, or international voltages. KW, amperage, and fuse size for each voltage below. 480 volts is not available. No Charge for any voltage options.

OPTIONAL ROLLING CASTER SYSTEM

Locking Swivel Casters (S-C-CAST/KT).....\$325
(Not available on the eFL2635)

CONTROL OPTIONS (PAGE 6 & 24)

SSR Power Control for 3 Circuit Models.....\$1950
SSR Power Control for 4 Circuit Models.....\$2350
High Limit Back Up Control (N-G-PKHL/00).....\$875
Back up Contactors Two-Section Kilns (N-G-BCJ2/00).....\$220
Back up Contactors Three-Section Kilns (N-G-BCJ3/00).....\$305
Back up Contactors Four-Section Kilns (N-G-BCJ4/00).....\$390
Type S Platinum Thermocouples (T-G-SJUP/UG).....\$340 each
Pyroclil metallic Thermocouples (T-G-E23M/UG).....\$58 each

CRATING OPTIONS

Engineered Pallet. High Lift Pallet Jack required to unload.
G-G-PACK/EF..... No charge
ISPM-15 for export. Plywood crate for eFL Series Front-Loading Kilns (Requires forklift to unload) G-G-ISPM/EF.....\$400.00



Model Number	Kiln Price	Furn Kit	Number of Shelves	Cubic Feet	Hearth Height	Inside Dimensions	Exterior Dimensions	240/1 KW-Amp-Fuse	240/3 KW-Amp-Fuse	208/1 KW-Amp-Fuse	208/3 KW-Amp-Fuse	Lbs Kiln	Lbs w/Kit
eFL1626	\$8,225	\$650	(3) 14"x 24"	6.6	40"	17W x 26H x 26D	36W x 63H x 39D	11.5-48.0-60	12.5-30.1-40	10.0-48.0-60*	12.5-34.7-50	645	725
eFL2026	\$9,050	\$800	(6) 10"x 24"	8.6	40"	22W x 26H x 26D	41W x 63H x 39D	13.3-55.4-70	13.3-32.0-40	13.3-64.0-80	13.3-36.9-50	700	800
eFL2626	\$10,125	\$925	(6) 12"x 24"	10.2	40"	26W x 26H x 26D	45W x 63H x 39D	15.4-64.0-80	15.4-37.0-50	15.4-73.9-100	15.4-42.6-60	765	885
eFL2635	\$11,900	\$1125	(8) 12"x 24"	13.7	32"	26W x 35H x 26D	45W x 72H x 39D	19.2-80.0-100	19.2-52.9-70	19.2-92.3-125	19.2-61.1-80	895	865

All models are rated to Cone 10 except the 208 volt single phase eFL1626 which is rated to Cone 5. * A special model eFL1626-208-X is rated at Cone 10 but has 56.0 amps with a 70 amp fuse and is wired direct. **Plugs on US Models only:** 6-50 on single phase and 15-50 on three phase for all eFL1626 models except the special eFL1626-208-X, 3 phase eFL2026, and 3 phase eFL2626. All other models are direct wired. **More:** See eFL Series Brochure and General Dimensions on each kiln page on our website for more details.. **Listings:** cMET-us listed to UL499. Add 14 lbs for vent option. Add 35 lbs for caster option.

Shipping & Moving: All the kilns 34-1/2" wide by 75" high door. All eFL kilns can be moved with a pallet-jack.

Crating Options: See hotkilns.com/crating for crating charges. Crating is included in price for continental USA.

Checklist: Fill out installation checklist prior to order: hotkilns.com/eFL-checklist.

EASY-LOAD KILNS

Professional Front-Loading Kilns



Easy-Load Kilns include FREE Zone Control!



This medium-sized front-loading kiln has elements in the door, gasketed door with plug heat lock, 4-1/2" arched brick roof, door shut-off switch, removable stand, separated cool-firing control panel, powder-coated heavy fabricated case and more.

Features & Benefits for Easy-Load

- Adjustable door with plug seal and fiberglass tadpole gasket for tight seal
- Heavy 12 and 10 gauge welded powder-coated case with stand and leveling pads
- Extra-tough High Temperature 2500°F 4-1/2" firebrick arch. Other insulation is 3" of K23 brick with 2" of mineral wool backup insulation
- Elements on door, sides and back for even firing
- Door power safety shut-off switch
- Hard ceramic element holders
- Genesis Touch Screen Control with Dynamic Zone Control (See page 6). (2 zones for EL2424-H, 3 zones for all others).
- Type K 8 gauge thermocouples with ceramic protection tubes
- Control panel mounted with air space between it and the case
- Branch fusing in control panel
- Solid peephole plugs with full 1" view in the door (2 for EL2424H, 3 for all others)
- MET-us listed to UL499 standards

MANUAL VENTILATION AND COOLING SYSTEM

There is a 2-3/4" by 1-7/8" brick plug on the top of the kiln and a sliding damper on the bottom to allow you to introduce cool air into the kiln without opening the door. (Note: this is not meant to replace the recommended Vent-Sure downdraft vent system).



Woven tadpole fiberglass door gasket for superior door seal



4-1/2" thick K25 Full Arch for extra strength



Door Elements for Even Heating



Thick Powder-Coated Steel Case



Welded Stand (can be removed on Hercules kilns). Move by pallet jack from all four sides.



Safety Door Switch shuts off power when door is opened.

Model No.	Price	Furn Kit	Inside Dimensions	Cubic Feet	Hearth Size	Shelves in Furn Kit	Hearth Height	KW	240/1 Amp-Fuse	240/3 Amp-Fuse	208/1 Amp-Fuse	208/3 Amp-Fuse	480/3 Amp-Fuse	Lbs Kiln	Lbs w/Kit
EL2424	\$14,375	\$575	25W x 25D x 24H	8.0	22" x 22"	(4) 11" x 22"	30"	15.0	63.0-80	55.0-70	73.0-100	63.0-80	28.0-40	1075	1250
EL2427	\$15,750	\$750	25W x 25D x 27H	9.0	22" x 22"	(6) 11" x 22"	30"	15.0	68.8-90	39.6-50	79.3-100	45.7-60	19.8-25	1200	1450

Furniture Kit: Includes the Cone 11 shelves listed above plus the Large Square Post Kit and insulated gloves for unloading. **More:** See Easy-Load Brochure and General Dimensions on each kiln page on our website for more details. **Power Hookup:** Direct wired. For controls see hotkilns.com/dynatrol and hotkilns.com/zone. **UL499:** Listed by MET to UL499 Standards.

EASY-LOAD KILNS

Commercial Front-Loading Kilns

CONTACT SALES@HOTKILNS.COM FOR A QUOTE
ON EASY-LOAD KILNS



Big, strong, well-built - if you need a large front-loading kiln we have it. L&L has been building front-loading kilns for over 70 years.



These are excellent kilns for large studios, universities, and advanced high schools as well as for industrial applications. This is a fully loaded EL2436.

Options for Easy-Load Kilns

FURNITURE KIT

Includes Cone 11 full shelves and half shelves as listed below plus a post kit which includes six each 1/2", 1", 2", 4", 6" and 8" high 1-1/2" square cordierite posts plus heat-resistant gloves. Prices below.

VENT-SURE DOWNDRAFT KILN VENT (PAGE 23)

Vent-Sure (120 volts) (M-V-VENT/00)\$725
Vent Doubler (M-V-VENT/DB)\$220
Vent Control (M-V-CNTL/00)\$190

CONTROL OPTIONS (PAGE 6 & 24)

SSR Power Control for 2 Circuit Models.....\$1375
SSR Power Control for 3 Circuit Models.....\$1950
Type S Platinum Thermocouples (T-G-SJUP/UG) \$340 each
Pyrocil metallic Thermocouples (T-G-E23M/UG) \$58 each
High Limit Back Up Control (N-G-PKHL/00)\$875
Back up Contactors EL2424 (N-G-BCE2/00).....\$500
Back up Contactors (All other models) (N-G-BCE3/00)\$600

SPECIAL HINGE MOUNTING

Hinge mounted on right. Note: Control panel stays on the right-hand side. (4 weeks extra production) (S-G-RHNG/EL). ...\$1575

POWERED BOTTOM

Powered Bottom for any model (P-B-UPGD/00).....\$1900

VOLTAGE & POWER OPTIONS (PAGE 24)

240 or 208 volts, single or three phase, or international voltages. KW, amperage, and fuse size for each voltage below. No Charge except for 480 volts.

480 volts/3 phase\$1050
NEMA 1 Panel (required for MET-us Listing)\$1050

CRATING

Standard Plywood Crate with air-ride engineered cushions and export-ready ISPM-15 construction (YOU MUST HAVE A FORKLIFT TO UNLOAD)

Model No.	Price	Furn Kit	Inside Dimensions	Cubic Feet	Hearth Size	Shelves in Furn Kit	Hearth Height	KW	240/1 Amp-Fuse	240/3 Amp-Fuse	208/1 Amp-Fuse	208/3 Amp-Fuse	480/3 Amp-Fuse	Lbs Kiln	Lbs w/Kit
EL2436	\$22,925	\$1150	25W x 25D x 36H	12.0	22" x 22"	(8) 11" x 22"	29"	19.0	80.0-100	46.0-60	92.0-125	53.0-70	24.0-30	1350	1500
EL2448	\$27,800	\$1325	25W x 25D x 48H	16.0	22" x 22"	(10) 11" x 22"	18"	24.2	101.0-125	59.0-80	117.0-150	68.0-90	30.0-40	1500	1750
EL2848	\$29,825	\$1750	31W x 25D x 48H	20.0	28" x 24"	(12) 14" x 24"	18"	27.0	113.0-150	66.0-90	130.0-175	75.0-100	33.0-50	1750	2000
EL3048	\$34,400	\$1825	31W x 31D x 48H	25.0	28" x 28"	(12) 14" x 28"	18"	31.5	132.0-175	76.0-100	152.0-200	88.0-125	39.0-50	2000	2300

Furniture Kit: Includes Cone 11 shelves listed above plus 2 Large Square Post Kits and insulated gloves for unloading. **More:** See Easy-Load Brochure and General Dimensions on each kiln page on our website for more details. **Power Hookup:** Direct wired. For controls see hotkilns.com/dynatrol and hotkilns.com/zone. **UL499:** Listed by MET to UL499 Standards.

Shipping & Moving: All the kilns except the EL3048 will go through a 34-1/2" wide by 75" high door. The EL3048 needs a minimum door size of 40-1/2" wide by 76" high. All Easy-Load kilns can be moved with a pallet-jack from any side. Shipping by air-ride truck.

Crating Options: Crating options include for USA for unloading with a forklift, unloading with a pallet jack (not available on the EL3048), or either for export. Crated with interior support and air-cushion skids. See hotkilns.com/crating for crating charges.

Checklist: Fill out installation checklist prior to order: hotkilns.com/front-load-checklist.

DAVINCI BELL-LIFT KILNS



Features & Benefits

Availability: DaVinci X3200-D & T3400-D Kiln Series. Also a special version exists for much larger kilns (TB644754-D See page 21).

Application: A common complaint concerning top loading kilns, the larger ones in particular, is that it is difficult to load them. This is especially true for larger pieces, and in a production environment this labor intensive job can become very expensive over time. Moreover, some people simply aren't capable of doing this strenuous and heavy lifting. Front loading kilns are often desired because they seem to be easier to load, however, it is still a strain to put a heavy piece into the back of a front-loading kiln and these kilns are generally more expensive and difficult to move. Shuttle kilns or envelope kilns work well for loading but they are also very expensive. Bell-lift kilns are one good solution for this problem.

How it Works: The Bell-Lift accessory lifts the whole kiln up as a unit exposing the bottom of the kiln for loading from all four sides. The kiln sections and top are held together as one unit with a metal support frame. This unit is lifted up with a ratcheted hand winch mounted on the external frame. (Electric winches are available as an upgrade.) There are manual safety pins that lock the kiln in place when the kiln is fully raised.

Construction: This whole support frame is made from powder-coated heavy duty welded parts that are easily assembled on site so that the system can be easily broken down for inexpensive common carrier shipping. (It is a two to three person job to assemble the kiln. Only simple tools, like wrenches are required).

Electric Hoist: Included in price.

Three Zone Control: Included for free.

Dimensions

Height: A 18", 27" or 36" high kiln (interior) will be 105" high, and a 45" high kiln will be 123" high.

More: See Bell-Lift Brochure and General Dimensions on each kiln page on our website for more details.

CONTACT INDUSTRY@HOTKILNS.COM FOR A QUOTE ON BELL-LIFT KILNS

Model No.	Kiln Price	Power Bottom	Furn Kit	Shelves in Furn Kit	Post Kits	Inside W x D	Inside Height	Cubic Feet	External Dimensions	Stand KW	High KW	240/1 Fuse	240/3 Fuse	208/1 Fuse	208/3 Fuse	Lbs Kiln	Lbs w/Kit
X3227-BL	\$29,000	\$1275	\$1000	(6) 28" x 14"	(1)	30.5" Square	27"	14.5	77W x 105H x 67D	18.0	21.3	100	60	125	70	1750	1900
X3236-BL	\$30,600	\$1275	\$1475	(8) 28" x 14"	(2)	30.5" Square	36"	19.4	77W x 105H x 67D	24.4	28.4	125	80	150	100	1885	2090
X3245-BL	\$34,225	\$1275	\$1700	(10) 28" x 14"	(2)	30.5" Square	45"	24.2	77W x 123H x 67D	30.5	35.5	175	125	200	125	2075	2325
X3254-BL	\$36,325	\$1275	\$1700	(10) 28" x 14"	(2)	30.5" Square	54"	29.1	77W x 147H x 67D	36.0	42.6	200	150	225	176	2140	2350
T3427-BL	\$31,575	\$1725	\$1600	(9) 28" x 14"	(2)	30.5" x 43.5"	27"	20.7	89W x 105H x 70D	24.9	36.5	125	80	150	90	1975	2205
T3436-BL	\$32,500	\$1725	\$1925	(12) 28" x 14"	(2)	30.5" x 43.5"	36"	27.6	89W x 105H x 70D	33.3	39.9	175	125	200	125	2225	2525
T3445-BL	\$34,225	\$1725	\$2675	(15) 28" x 14"	(3)	30.5" x 43.5"	45"	34.6	89W x 123H x 70D	41.6	49.8	200	150	225	175	2475	2850
T3454-BL	\$36,325	N/A	\$2675	(15) 28" x 14"	(3)	30.5" x 43.5"	54"	41.5	89W x 147H x 70D	49.8	59.8	250	200	300	225	2445	2860

Listings: cMET-us listed to UL499 with the exception of models X3254-BL and T3454-BL.

More: See various DaVinci specification sheets at hotkilns.com/spec-davinci for additional information like shipping dimensions, electrical ratings, fuse sizes and wire connection sizes. **Power Hookup:** Direct wired - no plugs. For controls see hotkilns.com/dynatrol and hotkilns.com/zone. You have a choice of standard or high power KW for no change in price.

Crating: Protected with wood crate and foam-in-place packaging for shipment by Common Carrier. Depending on the model there are either two or three crates. Some smaller models can ship in skidded cartons. See hotkilns.com/crating for crating charges.

JUMBO BELL-LIFT KILNS

100 Cubic Foot Industrial Kiln

Model TB644754



MORE INFORMATION

See hotkilns.com/kilns/tb644754-industrial-kiln for more Brochure and General Dimension Drawing and all technical details.

Pricing (480/3 phase version).....\$74,450

See hotkilns.com/crating for crating charges.

Features & Benefits

Temperature Rating: Cone 10, 2350°F, 1290°C

Loading: The kiln lifts up with an electric winch. Safety latches hold the kiln in place while kiln is loaded.

Assembly: 9" high sections stack on top of each other. Frame easily bolts together. A forklift or overhead crane should be used in the assembly.

Kiln Construction: Unique shallow side arches create super-strong sides and allow for plenty of space for air circulation.

Insulation: 3" K23 firebrick on sides and top. 4" ceramic fiber module top (RCF or Non-RCF depending on maximum temperature required).

Element Holders: Ceramic holders protect brick.

Elements: Heavy-duty. 3 elements per 9" high section.

Control Panel: Floor mounted NEMA 1 panel separate from kiln. Kiln sections attached to panel with cords. Mechanical contactors with control relays. Branch fusing. An On/Off switch and control fuse are included. Direct electrical hook-up to terminal block.

Control: DynaTrol with 4 Easy-Fire programs, 6 Vary-Fire programs, PreHeat, Delay, Program & Segment Review, and Diagnostics. (Others available - see Control options on page 24).

Zone Control: Three zone.

Peephole Plugs: Non-fragile solid ceramic with heat-locked head. 1" diameter full-view non-tapered. One per section.

Thermocouples: Type K 8 gauge with ceramic protection tubes.

Relays: Mercury free relays.

Instructions: Complete instructions with control reference, troubleshooting, and parts list. Web videos show how use the control.

Specifications

Voltage: 480/3P **KW:** 87.8

Note: Other voltages are available

Amps: 106 **Fuse:** 150 amps **Wire Size:** 2/0

Inside Dimensions: 66" W x 47" D x 54" H

Outside Dimensions: 96" W x 74" D x 160" H

Minimum Space Requirements: 120" wide by 98" deep by 165" high.

Ship Weight: 4000 lbs. Ships on a dedicated truck.

CONTACT INDUSTRY@HOTKILNS.COM FOR A QUOTE ON BELL-LIFT KILNS

CUSTOM, INDUSTRIAL & COMMERCIAL KILNS

Years of Custom Design Experience



L&L kilns are used in many industries including advanced industrial ceramics, abrasives, aerospace, piezo ceramics, optical glass, heating processes, melting, preheating for welding, annealing, stress-relieving, solution hardening, calcining, and steel heat treating.

The wide range of standard designs and built-in heavy-duty durability features allow L&L to quickly and economically configure many designs for rigorous production use.

Special industrial controls are available from Eurotherm, Honeywell, Watlow and others.

Our sister company, L&L Special Furnace Co., Inc., makes aerospace grade heat treating furnaces.

Call L&L to discuss your needs. We have years of experience to share. (hotkilns.com/industry)

LARGE SQUARE & RECTANGULAR KILNS

hotkilns.com/kiln-types/extra-large-square

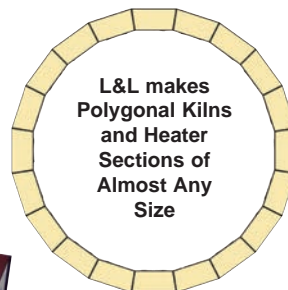


L&L designs and builds custom square and rectangular DaVinci kilns. Sizes are very flexible. The top is typically made of 4" thick ceramic fiber modules.

Industrial kilns are all by special quote and are only sold direct by the factory. Send an email with your requirements. Be sure to include process, size and temperature requirements. Send email to industry@hotkilns.com

CUSTOM LARGE POLYGONAL KILNS

hotkilns.com/kiln-types/large-polygonal



L&L makes Polygonal Kilns and Heater Sections of Almost Any Size

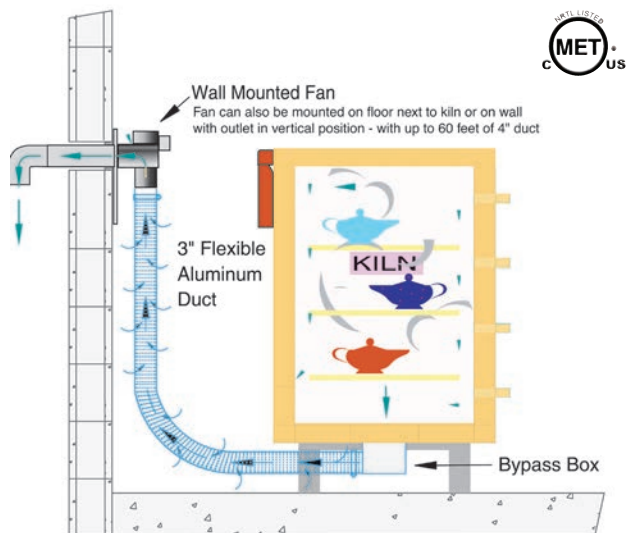


Custom polygonal kilns with 4-1/2" of firebrick are available by special quote. L&L can make almost any diameter and any height in multiples of 9" high sections. There are three elements per 9" high section. The base is made of welded angle-iron with leveling bolts. The bottom is typically 4-1/2" of K23 brick. These are typically cemented in sections and then held together with a stainless steel band. The top is typically made of 4" thick folded and formed ceramic fiber modules. Temperatures are limited to 2350°F (1285°C).

KILN VENTS AND ACCESSORIES

VENT-SURE DOWNDRAFT KILN VENT SYSTEM

The L&L Vent-Sure has the strongest fan motor in the industry - great for schools and other difficult installations.



MORE INFORMATION: hotkilns.com/vent-sure

Features

- Downdraft venting pulls air down to bottom of kiln
- Improves temperature uniformity inside the kiln
- Powerful 130 CFM fan motor, typically mounted on wall, allows fumes to be under vacuum in your studio
- The strong fan motor helps overcome static pressure in long exhaust lines. The duct may be up to 60 feet in length, and include up to four 90° bends
- 120 volts with on/off switch on cord (240 volts available)
- 8 foot long flexible aluminum duct
- Bypass collection box mounted on kiln allows adjustment of venting.
- Fan motor, mounted away from the kilns, stays cool and no vibration transmitted to the kiln
- Multi-Mount Bracket comes with the Vent System - allows you to mount vent motor in various positions.
- Three-year Limited Warranty
- c-MET-us Listed to UL499 standards for use on c-MET-us L&L Kilns (Easy-fire, School-Master, Jupiter, Davinci, Ergo-Lift). MET-us Listed to UL499 standards on Hercules, and Easy-Load kilns).



PRICES FOR VENT SYSTEMS

Vent-Sure for 120 Volts (primarily used in the USA)

M-V-VENT/00\$725

Same as above but with heavy-duty 15 foot flexible duct

M-V-VENT/15\$700

Vent-Sure for 220-240 Volts (Usually non-USA)

M-V-VENT/41\$750

Same as above but with heavy-duty 15 foot flexible duct

M-V-VENT/45\$775

VENT OPTIONS

EXTRA LONG FLEX DUCT

A 3 foot to 15 foot heavy duty flexible duct is available.

M-V-DUCT/15.....\$40

VENT DOUBLER

You can get a vent doubler option which allows you to vent two kilns that are each up to 10 cubic feet. (Note: Consider buying the Multi-Mount Bracket). Includes all parts necessary to vent two kilns - up to 10 cubic feet each with one vent.

(hotkilns.com/doubler)

M-V-MVENT/DB\$220



VENT CONTROL

The Vent Control allows you to automatically control the operation of the Vent-Sure kiln vent with one of the outputs from the DynaTrol (or Genesis). (hotkilns.com/vent-control)

M-V-CNTL/00\$190



OPTIONS AND ACCESSORIES

CONTROL & POWER OPTIONS

TRADITIONAL KEYPAD DYNATROL CONTROL

DynaTrol with 4 Easy-Fire programs (Slow Bisque, Fast Bisque, Slow Glaze, Fast Glaze), 6 Vary-Fire custom programs, PreHeat, Delay, Program & Segment Review, and Diagnostics. Zone control with 2 or 3 zones. Separate Type K 8 gauge thermocouples with ceramic protection tubes.

N-G-DYNA/OPNo Charge

HIGH LIMIT BACK UP CONTROL

Bartlett High Limit Control with latching relay acts as a back up to the main control. If the main control fails for any reason then this acts as a "back stop" and shuts the kiln down. Available on Jupiter, DaVinci, Hercules and Easy-Load kilns only.

(hotkilns.com/high-limit)

N-G-PKHL/00\$875

BACK UP CONTACTORS

Actuated by the High Limit Back Up Digital Control, back up contactors are completely redundant power contactors so that if one or more contactors fail in a closed position then the kiln still cannot climb above the High Limit set point. Needs a large box. Available on Jupiter, DaVinci, Hercules and Easy-Load kilns only.

(hotkilns.com/high-limit)

Jupiter Two-Section Kilns (N-G-BCJ2/00).....\$220

Jupiter Three-Section Kilns (N-G-BCJ3/00).....\$305

Jupiter Four-Section Kilns (N-G-BCJ4/00).....\$390

Jupiter Five-Section Kilns (N-G-BCJ5/00)\$465

DaVinci Two-Section Kilns (N-G-BCX2/00).....\$500

DaVinci Three-Section Kilns (N-G-BCX3/00).....\$600

DaVinci Four-Section Kilns (N-G-BCX4/00).....\$700

DaVinci Five-Section Kilns (N-G-BCX5/00)\$825

EL2424 (N-G-BCE2/00)\$500

EL2427 & All Easy-Load Kilns (N-G-BCE3/00)\$600

120 VOLT POWER SUPPLY

If there are problems with short power outages, voltage spikes, voltage drops, or excessive environmental line noise, this can cause unpredictable behaviour in the electronic control. With this option the control is powered by a separate 120 volt line (with a standard 6 foot long cord) and that voltage is filtered through an EMI (Electrical Magnetic Interference) noise filter. Available on all kilns. (hotkilns.com/noise) L-G-EMIF/00\$295

SOLID STATE RELAYS

Industrial Grade Solid State Relays are quiet and result in longer element life because the switching time is so fast the elements don't heat and cool as much the way they will with regular mechanical contactors. The whole system includes heat sinks, special fast acting fuses, cooling fan and extra safety relays.

SSR Power Control for 2 Circuit Models (L-X-SSRS/02) ...\$1375

SSR Power Control for 3 Circuit Models (L-X-SSRS/03) ...\$1950

SSR Power Control for 4 Circuit Models (L-X-SSRS/04) ...\$2350

SSR Power Control for 5 Circuit Models (L-X-SSRS/05) ...\$2775

SSR Power Control for 6 Circuit Models (L-X-SSRS/06) ...\$3150

Note: Panels with 6 circuit need to use the larger NEMA1 panel for an extra \$1050.

INDUSTRIAL CONTROLS

Various industrial controls are available on DaVinci, Jupiter and Easy-Load kilns only. Call factory to discuss.

480 VOLTS/3 PHASE



Available for Jupiter 28" diameter kilns, DaVinci kilns, Hercules, and Easy-Load kilns. Kiln sections are hard wired to power box with flexible cords.

(hotkilns.com/480)\$1050

NEMA 1 CONTROL BOX:

480 volts on Easy-Load kilns becomes MET-us listed with this extra option.

Recommended for other 480 volt kilns or for industrial applications.\$1050

THERMOCOUPLE OPTIONS

TYPE S THERMOCOUPLES

The best thermocouple for constant high fire applications.

There is no thermocouple drift and they will almost never need replacing. Priced per thermocouple. For a single-zone kiln you will need one, for a two-zone kiln two, and for a three-zone kiln three. Note that kilns with four or more sections still only have a three-zone control. (hotkilns.com/type-s)

T-G-SJUP/UG (Price per thermocouple).....\$340

PYROCIL SHEATHED THERMOCOUPLES

For greater sensitivity to temperature change. Use below 2200°F for sensitivity (glass is a good example). See above note about quantity required for Type S thermocouples. (hotkilns.com/pyrocil-tc) T-G-E23M/UG (Price per thermocouple)\$58

CUSTOM OPTIONS

Discuss your custom needs with us. We customize our kilns for industrial applications and special ceramic needs. We can make very tall kilns, very large diameter kilns, add special holes, make ceramic fiber tops, use mercury relays and SSRs, add insulation. We have many years of industrial and special design experience.

SUPERIOR KILN FURNITURE



SQUARE POSTS ARE CUT SQUARE

L&L sells the highest grade ceramic extruded posts. They are very straight (even in lengths up to 12" long), precision cut for squareness (which makes shelves stable), and are strong without being excessively thick.

Posts & Post Kits

POST KITS

Large Square Post Kit

(Six each 1/2", 1", 2", 4", 6" & 8" square posts) (C-G-SPKT/LG) \$180

Small Square Post Kit

(Four each 1/2", 1", 2", 4", 6" square posts) (C-G-SPKT/SM) \$125

Doll Square Post Kit

(Four each 1/2", 1", 2", 4" square posts) (C-G-SPKT/DL) \$100

SQUARE POSTS (1-1/2" SQUARE)

1/2" Square Post (C-G-S005/00) \$2.35
1" Square Post (C-G-S010/00) \$2.90
2" Square Post (C-G-S020/00) \$3.40
4" Square Post (C-G-S040/00) \$5.25
6" Square Post (C-G-S060/00) \$6.25
8" Square Post (C-G-S080/00) \$8.50

TRIANGULAR POSTS

NOTE: Single triangular posts are available on the web.

FREIGHT FOR SHELVES AND FURNITURE KITS

Depending on the quantity and size of shelves, posts and furniture kit(s) ordered, the order may have to ship by common carrier freight. Skid/carton charge \$75

Round & Polygonal Shelves

11" DIAMETER KILNS

For Doll/Test Kilns

Full Round 9" diameter shelf (3/8" thick) (H-D-9000/00) \$42

14" DIAMETER KILNS

For Fuego & e14S-3 Kilns (with 3" brick)

Full Round 12" diameter (1/2" thick) (H-J-1200/00) \$50

16-1/2" DIAMETER KILNS

For e18S-3 & e18T-3, and J1800-3 kilns with 3" brick

Full Round 15" diameter (5/8" thick) (H-J-150A/00) \$72

Half Round 15" diameter (5/8" thick) (H-J-155A/00) \$47

22" DIAMETER KILNS

For e23S-3, e23T-3, SM23T-3, & J2300-3 kilns with 3" brick

Full Round 20" diameter (3/4" thick) (H-J-2000/00) \$120

Half Round 20" diameter (3/4" thick) (H-J-2050/00) \$61

28" & 29" DIAMETER KILNS

For e28S, e28T, SM28T, J2900 Series with 2-1/2" or 3" brick

Half Round 25-1/2" diameter (3/4" thick) (H-J-2650/00) \$100



HIGH ALUMINA SHELF MATERIAL CONE 11 RATING

All shelves are made of a press-molded (not cast) high alumina cordierite body that holds up to Cone 11 firing with little warping.

Rectangular Shelves

X2800 SERIES, E2818XT, E2827XT

11-1/2" x 23" rectangular (3/4" thick) (H-X-2311/00) \$95

T2300 SERIES, EL2424-H, EL2427-H, EL2436 & EL2448

11" x 22" rectangular (3/4" thick) (H-X-2211/00) \$95

EFL2026

10" x 24" rectangular (3/4" thick) (H-X-2410/00) \$95

EFL2626, EFL2635

12" x 24" rectangular (3/4" thick) (H-X-2412/00) \$95

EL2848, EFL1616, EFL1626

14" x 24" rectangular (3/4" thick) (H-X-2414/00) \$110

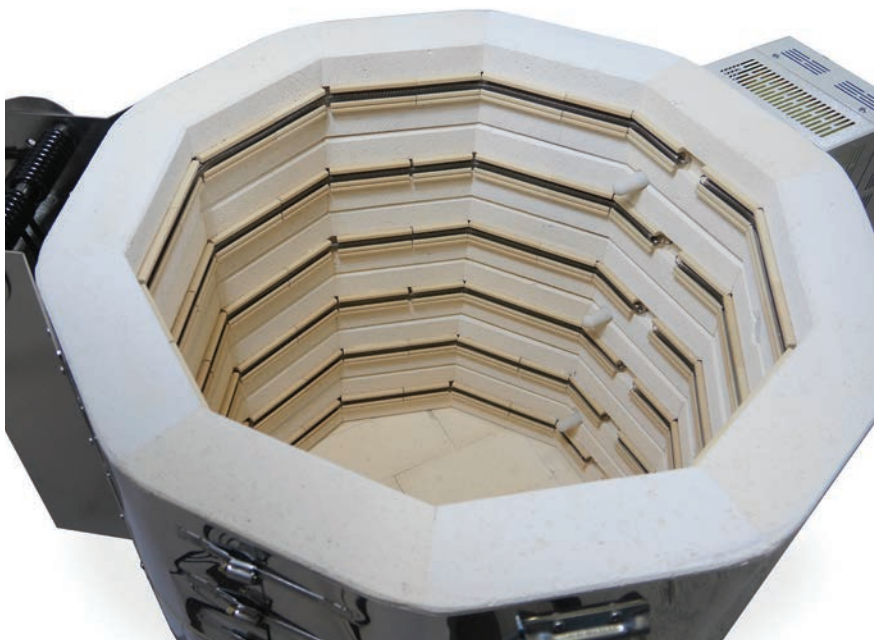
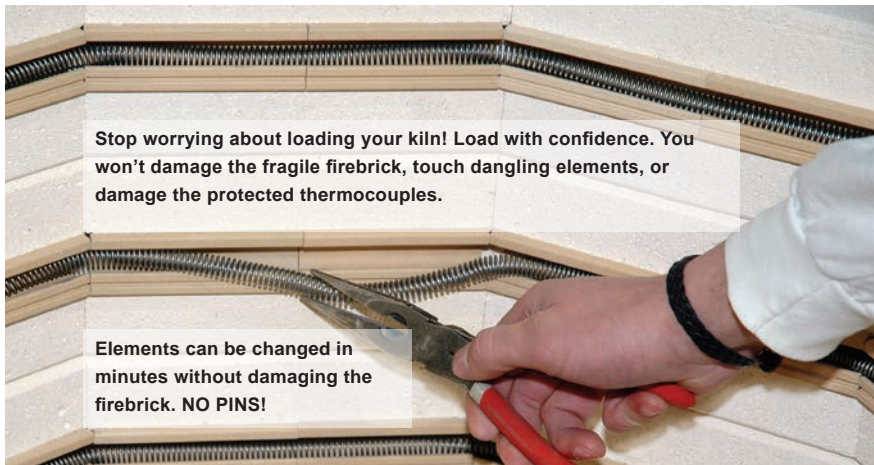
X3200 SERIES, T3400 SERIES & EL3048

28" x 14" rectangular (3/4" thick) (H-X-2814/00) \$120

SIGNATURE L&L FEATURES

HARD CERAMIC ELEMENT HOLDERS - KEY TO L&L'S DURABILITY

The smooth, hard surface of the inside ceramic channel allows the elements to expand and contract freely. No pins! This prevents catastrophic element failure. Elements do not droop out of broken firebrick channels. The dense ceramic DynaGlow holders extend element life because they do not insulate the hot elements from the kiln interior.



OTHER DURABILITY FEATURES

PROTECTED THERMOCOUPLES

L&L thermocouples are shielded from damage by a ceramic protection tube. We use the finest "special limit" aerospace-grade heavy-gauge thermocouple wire. (hotkilns.com/tc-protection)



CERAMIC ELEMENT TERMINALS

Ceramic element terminals make element changes easy. (hotkilns.com/ceramic-terminal)



SOLID PEEP PLUGS

Solid straight ceramic peephole plugs are strong and will not slip out like tapered, fragile, slip-cast plugs. (hotkilns.com/peephole-plugs)

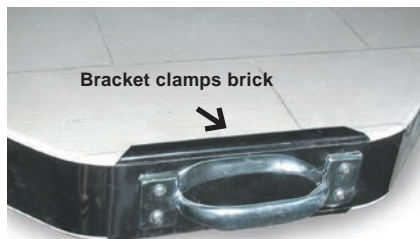


CORROSION RESISTANCE

Stainless steel, aluminized, and galvanealed steel are used where needed. All other metal is powder-coated which also resists corrosion. (hotkilns.com/case)

LID BRICK IS SECURED WITH CLIPS

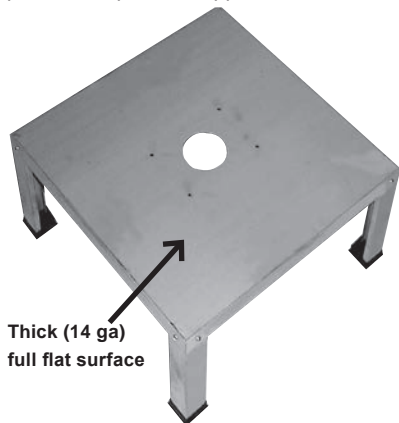
Stainless "U" brackets secure lids - not



friction. (hotkilns.com/lid-clips)

FULL-SUPPORT STANDS

On all polygonal kilns we use a Full-support 14 gauge aluminized steel stand is stronger than hollow frame stands and provides important support in the center of



the bottom. (hotkilns.com/full-stand)

PERFORMANCE

GENESIS TOUCH SCREEN CONTROL



See Genesis Touch Screen Control with free phone app (Page 6).

DYNAMIC ZONE CONTROL IS STANDARD ON MOST L&L KILNS

The Genesis separately measures temperatures in the bottom, middle and top of the kiln and automatically adjusts the heat output of three zones during the entire firing. Kiln temperatures are automatically evened out to within 1/2 cone or better top to bottom. Zone control automatically compensates for many loading issues and element changes over time. Even on kilns where we use graded elements, L&L kilns are fundamentally uniform because the element holders radiate the heat more evenly. *This is often an expensive option on competing kilns but is free on L&L kilns.* (hotkilns.com/zone)

"EASY-OPEN, EASY-LOAD" LID

The whole kiln supports the lid (not just one section). Our positive safety pin secures the lid safely. No support bars (like other kilns) get in the way of loading when the lid is fully tilted back. (hotkilns.com/spring-hinge)



SAFETY

UL499 LISTING

Most L&L kilns are c-MET-us listed to UL499 standards. See each kiln series for details. (hotkilns.com/ul499)



SAFE MATERIALS

No asbestos, mercury, lead, or other hazardous materials are used in L&L kilns.

SAFETY LATCHES ON LIDS

All lids and lifting devices include a safety latching system. On/Off & safety switches.

MAINTAINABILITY

L&L KILNS ARE EASY TO TROUBLESHOOT

Open up any L&L kiln control panel and see how easy it is to check amps, element resistance, and voltage. No other kiln can be serviced as quickly, easily, or inexpensively as an L&L kiln.

SECTIONAL CONSTRUCTION MAKES REPAIR WORK EASY

All top-loading L&L kilns are sectional. Even the large 35 cubic foot standard DaVinci kiln is easy to move, set up, and repair.

THREE-YEAR WARRANTY

See hotkilns.com/warranty. Free email, web and phone support.

IN-DEPTH SUPPORT

One customer said: "I am truly impressed with your website, it is more than informative and your products are well designed. The fact that all the information, including repair manuals, are listed, speaks well of your dedication to customer service." Our website has thousands of pages of technical help - all easily searchable - plus we provide expert free support with phone and email.

VISUAL INSTRUCTIONS

No one has a better or more complete instruction manual. Our visual instructions address the needs of the artist, the



installer, and the repair person. You get a fully illustrated operation and service manual. Various

instructional videos are available.

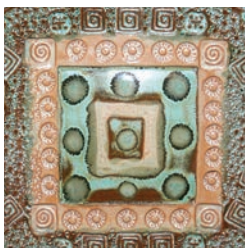
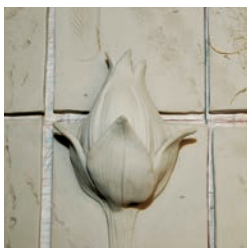
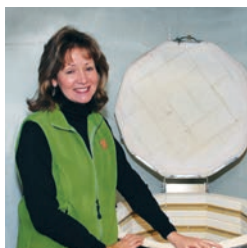
(hotkilns.com/videos)

WHAT L&L CUSTOMERS SAY



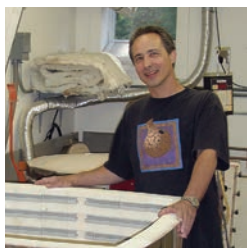
BILL CAMPBELL

"I make a living out of my five L&L kilns. I really beat them up, firing them at least three times a week to Cone 10. They take a real beating and keep on going."



DIANE EMERSON

"I switched to L&L because of the deterioration of the element channels in my last kiln. I load larger tiles and I need the extra durability on the face of the firebrick."



FRANK GIORGINI

"My original L&L (J2927) has provided outstanding service and reliability through the firing of countless pots, tiles, udu drums, sculptures and two New York City MTA Subway projects. It's still in service right next to my DaVinci kiln."



More Information & Support at hotkilns.com

Prices in this catalog are subject to change without notice. Prices are always current on our web site. Find complete specifications, support videos, photos, parts, PDF Library, and thousands of pages of knowledgebase information easily, using our sophisticated search engine.



505 Sharptown Road • Swedesboro, NJ 08085
Phone: 856.294.0077 • Fax: 856.294.0070
sales@hotkilns.com • hotkilns.com

TRUST YOUR KILN

Prices Effective Feb 1, 2023 Bulletin No: CAT-0223