

**NOTES:**

Control Wire:  
16 AWG, 105°C  
Power Wire:  
10 AWG, 150°C

Industrial & commercial applications may require the installation of a LOCKOUT/TAGOUT device to prevent the Kiln from operating during maintenance.

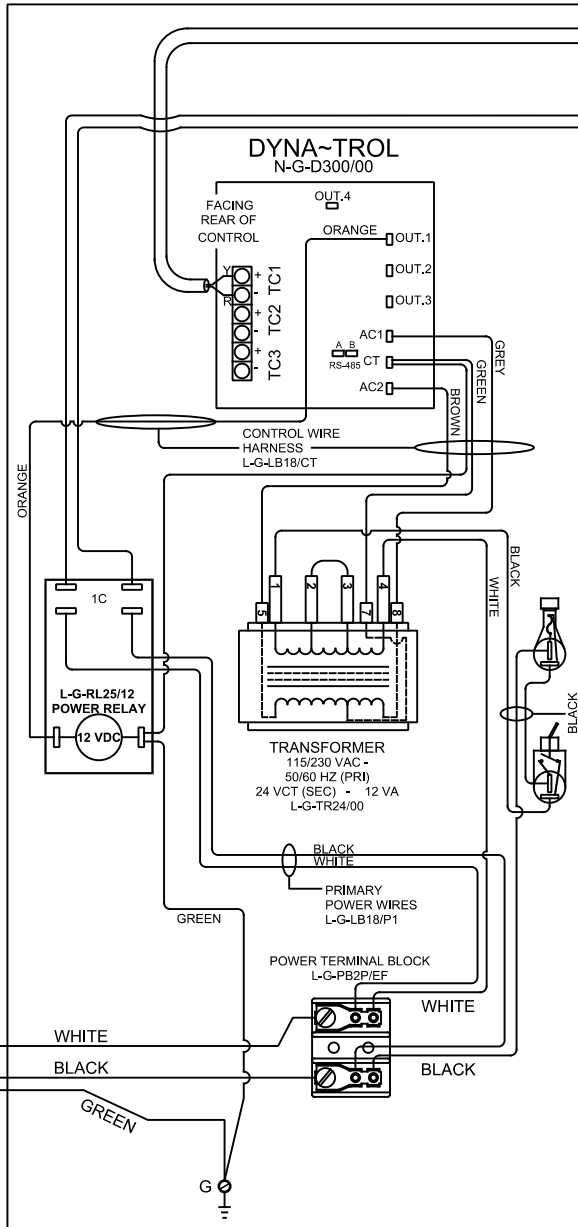
This Kiln is recommended to be wired & connected to an approved U. L. & NEC configured receptacle controlled with a disconnect switch and properly fused according to the KW load load specification listed on the Kiln Nameplate. L&L Kiln Mfg., Inc., also recommends fuses rather than circuit breakers to prevent nuisance tripping.



PLUG  
5-20P NEMA (120V)  
P/N L-G-PC20/00

**SAFETY SWITCH BY CUSTOMER**  
Connect to  
120 Volt, 25 Amp Circuit  
50 or 60 Cycles.

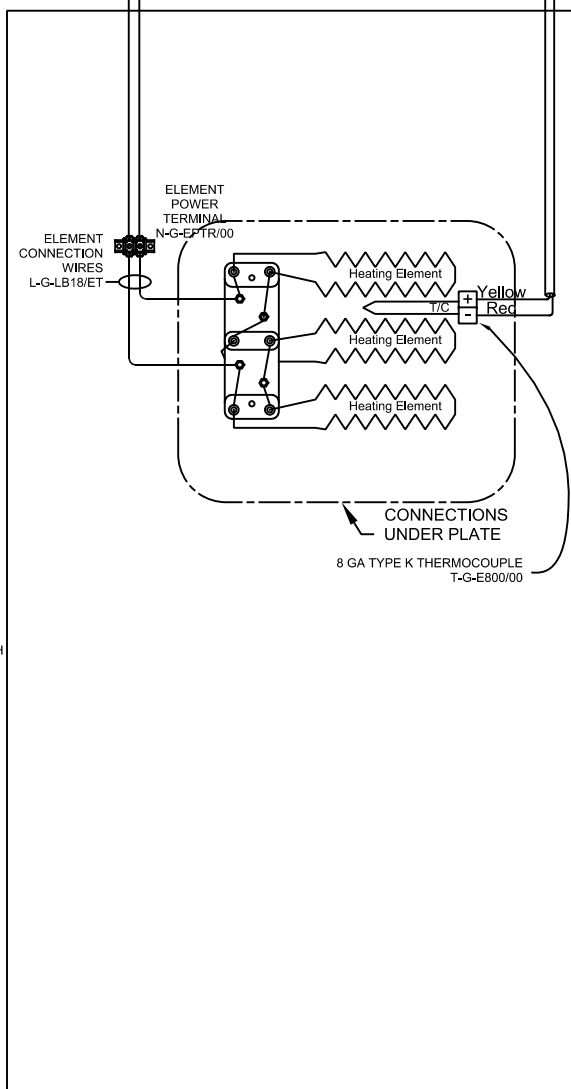
LOOKING INSIDE CONTROL PANEL



T/C WIRE - T-G-LB18/HT

SECONDARY POWER WIRES  
L-G-LB18/P2

LOOKING AT OUTSIDE OF INSULATING PLATE



**Model DLH11-D  
120 Volts**

VOLTAGE	120 / 1 / 50-60		
WATTS	2160		
FULL LOAD AMPS	L1	L2	L3
	18.0	18.0	X
POWER SUPPLY	FUSE	WIRE	
	25A	14 AWG	
ELEMENTS K-D-DLHD/10	QTY	OHMS	
	3	2.14	

REV. #	DATE	REVISION DESCRIPTION