

School-Master

Top-Loading Kilns made for K-12 Schools

The School-Master Kiln Series was designed with the One-Touch™ Intuitive Kiln Control specifically with busy school teachers in mind. One touch and you are ready to fire the bisque and glaze programs most often used in K-12 schools. No programming is necessary. Simple adjustments are easy (like cone level, heating and cooling speed, hold time and delay time), yet sophisticated programming is also possible.



Unique Features

- Ceramic Element Holders
- Simple Control
- Easy-Service Panel
- Protected Thermocouple
- Spring Hinge
- Super-Strong Stand
- Extended Warranty

**FIVE YEAR
WARRANTY**



505 Sharptown Road • Swedesboro, NJ 08085
Phone: 856.294.0077 • Fax: 856.294.0070
sales@hotkilns.com • hotkilns.com

KILNS BUILT TO LAST

Bulletin No: SM-0821

Unique Features - Lasting Benefits

CONE 6 TEMPERATURE RATING

Cone 6, 2230°F, 1220°C (cone 5 on SM28T-3, 208 volts, single phase)

CHOICE OF INSULATION

Choice of 2.5" or 3" K23 firebrick. (3" only on SM28-3 Model).

PATENTED CERAMIC ELEMENT HOLDERS

Protect brick from loading damage, keep elements from falling out of grooves, make changing elements easy, and optimize heat transfer to load. Kiln lasts longer! No pins. (hotkilns.com/ceramic-holders)



BRICK COATING FOR DURABILITY

Proprietary reflective brick coating. This helps firebrick stay strong on the surface, helps prevent dusting on your work, and keeps the kiln clean inside. (hotkilns.com/reflective-coating)

HEAVY-DUTY LARGE ELEMENTS

Six heavy-duty elements. Elements are graded for uniformity.

EXTRA CASE CLAMPS

Stainless worm gear case clamps keep case together and allow for adjustment over time. Three per 9" ring, Two on the top and bottom. (hotkilns.com/case-clamps)

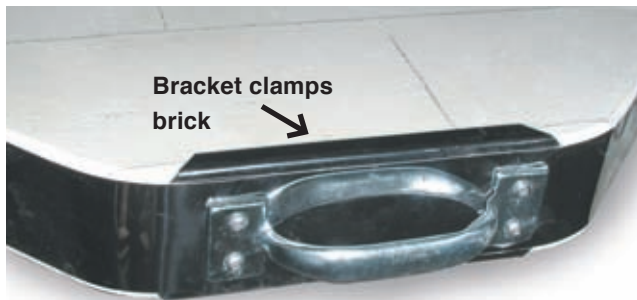
"EASY-OPEN, EASY-LOAD" SPRING-LOADED LID OPENS WIDE FOR LOADING

The whole kiln supports the lid (not just one section). Our positive safety pin secures the lid safely. No support bars get in the way of loading when the lid is fully tilted back. (hotkilns.com/spring-hinge)



LID BRICK IS SECURED WITH CLIPS

Stainless Steel clips secure lids - not friction.
(hotkilns.com/lid-clips)



EASY ASSEMBLY WITH SECTIONAL CONSTRUCTION

Three 9" sections stack on top of each other. Easy to assemble or disassemble for moving. Bottom is reversible. (hotkilns.com/sectional-easy-fire)

CORROSION RESISTANT CONSTRUCTION

Stainless steel wrapped around brick. All stainless screws on case. Stand is galvanized. Vent parts are stainless steel. Hinge is stainless steel. Control box is powder coated steel. (hotkilns.com/case)

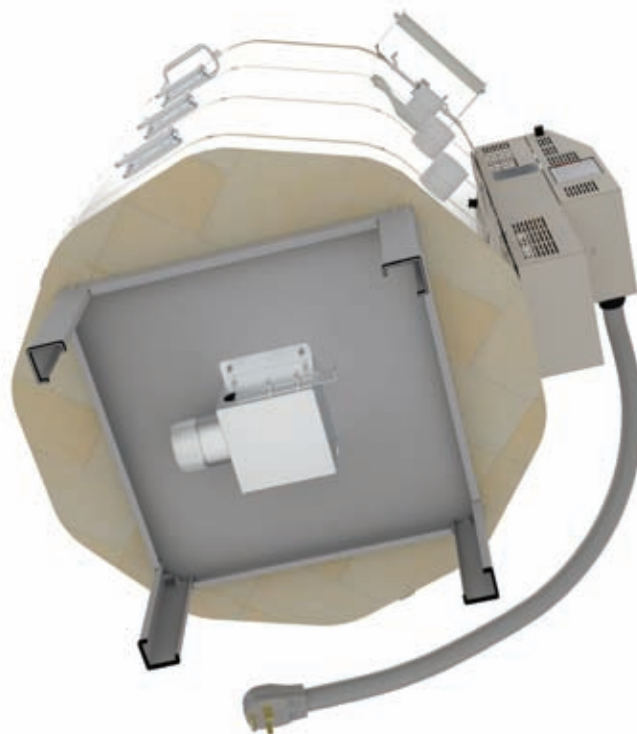
SOLID PEEPHOLE PLUGS

Non-fragile solid ceramic with heat-locked head. 1" diameter full-view non-tapered.
(hotkilns.com/peephole-plugs)



HEAVY-DUTY FULL-SUPPORT STAND

Heavy-duty 14 gauge solid stand with multiple bends for strength. Bolt on legs. Feet protectors included. Optional Vent Bypass Collection Box bolts onto bottom of stand with included studs. (hotkilns.com/full-stand)



ONE-TOUCH PROGRAM CONTROL

Control: One-Touch™ Intuitive Kiln Control easily fires the bisque and glaze programs typically used in schools. It is also easy to adjust simple parameters like cone, delay, hold, heat-up and cool-down rates. Also four custom ramp/hold programs with 8 segments each. (hotkilns.com/one-touch)



HEAVY-GAUGE TYPE K THERMOCOUPLE

Type K 8 gauge thermocouple is protected by a open ceramic protection tube. This allows the thermocouple to accurately read the kiln temperature but protects the delicate tip of the thermocouple from damage while loading. Also any metallic flakes from the thermocouple will tend to drop inside the tube where they can be vacuumed out during normal maintenance. (hotkilns.com/protected-thermocouples)



POWER CORD & PLUG INCLUDED



50 Amp NEMA 6-50 six foot cord included for one phase.



50 Amp NEMA 15-50 six foot cord included for three phase. (All Non-USA kilns are direct wired).

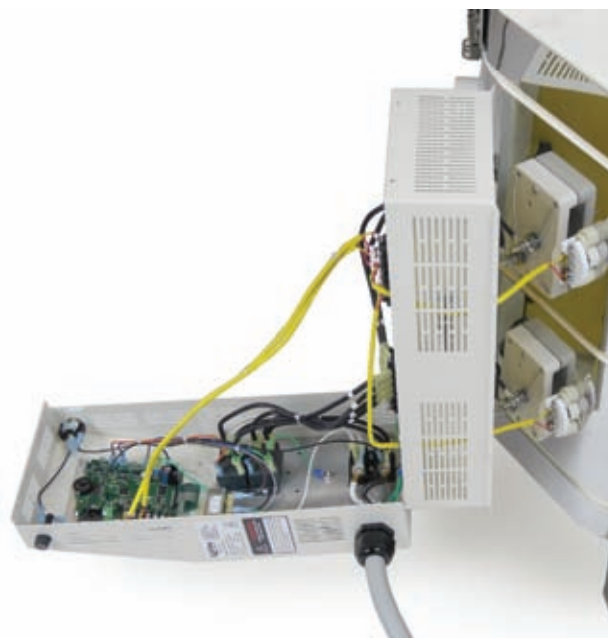
Same price for all voltages and phases.

SEPARATED COOL-FIRING CONTROL PANEL

All controls and components are mounted in a separate control panel that is piggy-backed to the element connection box. In addition a layer of insulation keeps the controls cool - which is critical for long term health of the electronics.

The control panel and element box are hinged for easy access and maintenance. The control box can be easily removed for servicing. On/off switch and control fuse are included.

(hotkilns.com/easy-fire-panel)



CERAMIC ELEMENT CONNECTIONS

Proprietary all-ceramic element connection block makes changing elements easy.

(hotkilns.com/ceramic-terminal)



MERCURY FREE RELAYS

Mercury free relays are standard.

COMPLETE VISUAL INSTRUCTIONS

No one has a better or more complete instruction manual. Our visual instructions address the needs of the artist, the installer, and the repair person. You get a fully illustrated operation and service manual. Various instructional videos are available. (hotkilns.com/videos)

L&L KILNS ARE EASY TO TROUBLESHOOT

Open up any L&L kiln control panel and see how easy it is to check amps, element resistance, and voltage. No other kiln can be serviced as quickly, easily, or inexpensively as an L&L kiln.

IN-DEPTH SUPPORT

One customer said: "I am truly impressed with your website, it is more than informative and your products are well designed. The fact that all the information, including repair manuals, are listed, speaks well of your dedication to customer service." Our website has thousands of pages of technical help - all easily searchable - plus we provide expert support with phone and email.

SPECIAL FIVE-YEAR WARRANTY

See hotkilns.com/warranty. Email, web and phone support.

SUSTAINABLE MANUFACTURING

We use solar energy as our primary energy source.

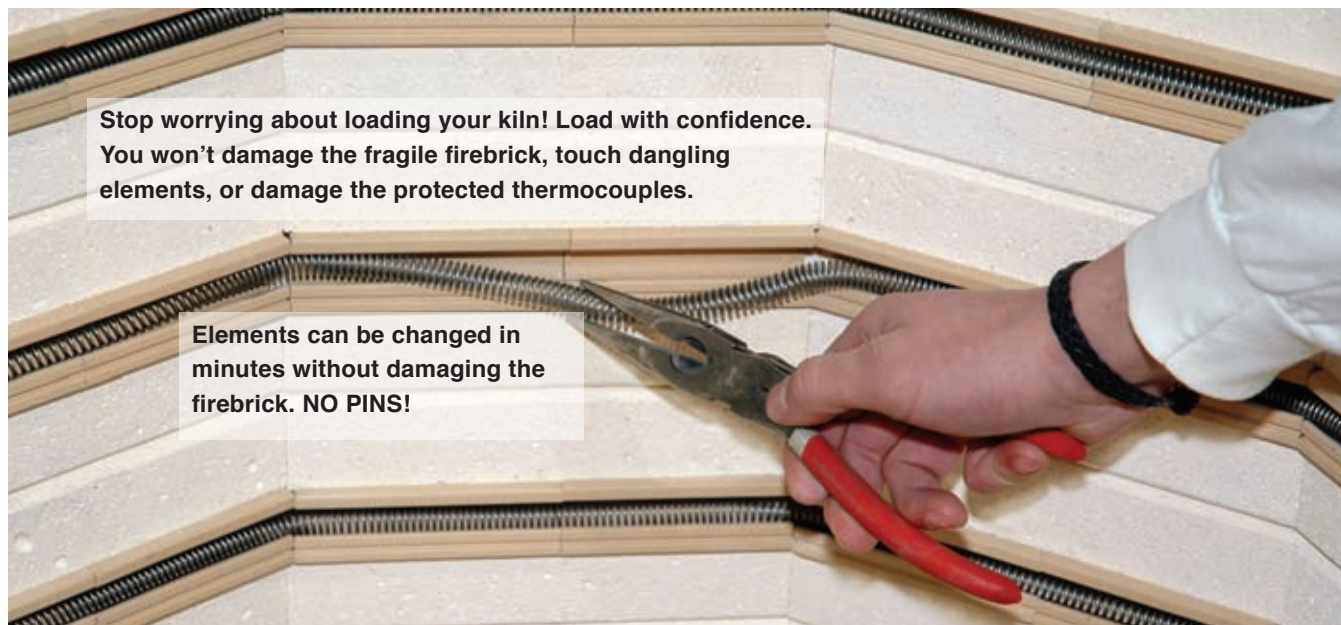
SUPERIOR PACKAGING

Kilns are securely packed with tubes of foam molded to the kiln. Kilns are shipped in skidded cartons.

MET UL499 LISTING



c-MET-us listed to UL499 standards assures highest safety standards. (hotkilns.com/met)



Kiln Furniture, Electrical & Stand Options

HIGH ALUMINA FURNITURE KITS



Shelves are high alumina cone 11 shelves. Each post kit includes six each 1/2", 1", 2", 4", 6" and 8" high 1.5" square cordierite posts. All furniture kits include one pair heat-resistant gloves.

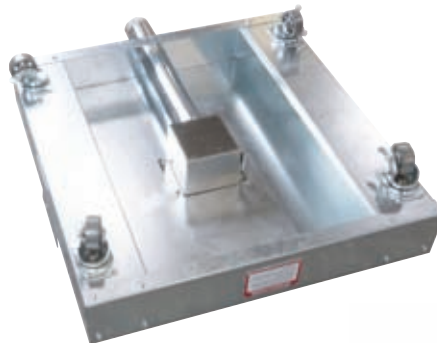
(hotkilns.com/kiln-furniture)

OPTIONAL CORDS

All single phase models can get a 12 foot NEMA 6-50 cord. (hotkilns.com/cord-options)

ROLLING STAND WITH LOCKING CASTERS

Allows kiln to be moved out of the way while not firing. L&L's rolling kiln stand features heavy gauge (14 ga) galvanized steel construction with multiple bends for extra strength, steel swivel locking casters, integrated vent collection box support, and guide rails for the kiln. (hotkilns.com/rolling-stands)



SEISMIC BRACE

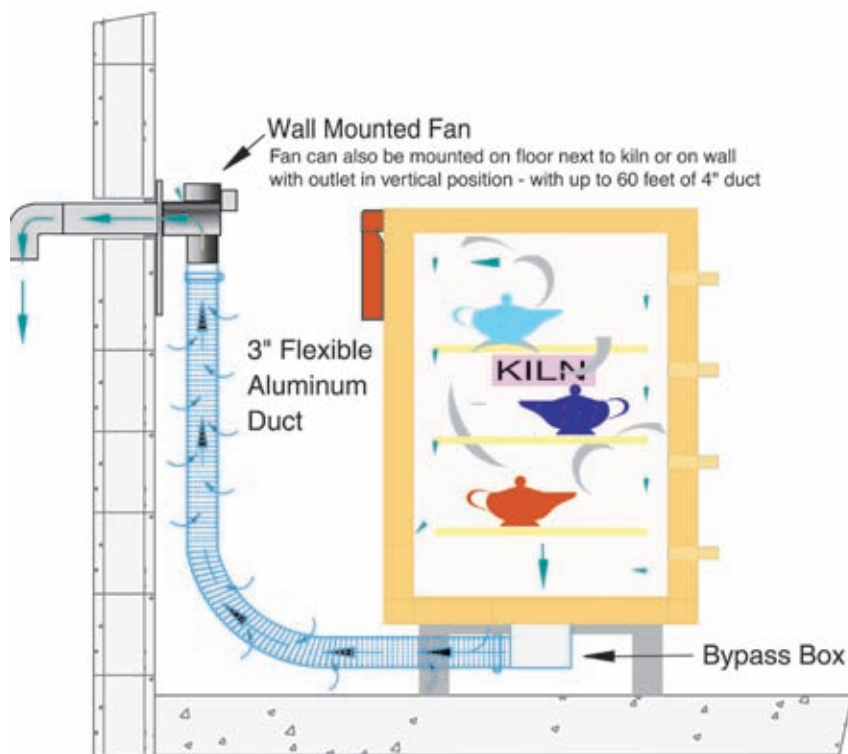
This special stand is designed to prevent a top-loading sectional kiln from falling over during an earthquake. (hotkilns.com/seismic-brace)



Ventilation Options & Accessories

DOWNDRAFT VENT SYSTEM

Vent-Sure downdraft vent vents fumes from kiln out of room and away from kiln. (hotkilns.com/vent)



VENT-SURE FEATURES

- Downdraft venting pulls air down to bottom of kiln
- Improves temperature uniformity inside the kiln
- Powerful 130 CFM fan motor, typically mounted on wall, allows fumes to be under vacuum in your studio
- The strong fan motor helps overcome static pressure in long exhaust lines. The duct may be up to 60 feet in length, and include up to four 90° bends
- 120 volts with on/off switch on cord (240 volts available)
- 15 foot long flexible aluminum duct
- Bypass collection box mounted on kiln allows adjustment of venting.
- Fan motor, mounted away from the kiln, stays cool and no vibration is transmitted to the kiln
- The included Multi-Mounting Bracket allows you to mount the vent on the floor or, alternately, to mount the vent on a wall so that the output of the vent is pointing up.
- Three-year Limited Warranty
- c-MET-us Listed to UL499 standards for use on c-MET-us L&L Kilns



VENT DOUBLER

This accessory allows you to connect two kilns to a Vent-Sure vent system. It can be added to an existing vent system or can be ordered with a new vent. In some cases you may be able to fire two kilns at once. The Vent-Sure has enough force to vent at least 25 cubic feet of kiln. That means, for instance, that two SM28T-3 kilns could be vented while firing at the same time. (hotkilns.com/doubler)



Electrical Specifications

| Model Numbers | Part Number | Voltage/Phase | Cone Limit | Watts | Amps | Wire Size | Fuse Size | Power Connection |
|-----------------------|-------------|---------------|------------|--------|------|-----------|-----------|------------------|
| SM23T-240 | K-S-23T2/31 | 240/1P | 6 | 11,500 | 48.0 | 6 ga | 60 Amps | 6-50 Cordset |
| SM23T-240-3P | K-S-23T2/32 | 240/3P | 6 | 11,500 | 27.8 | 8 ga | 40 Amps | 15-50 Cordset |
| SM23T-208 | K-S-23T2/21 | 208/1P | 6 | 9,980 | 48.0 | 6 ga | 60 Amps | 6-50 Cordset |
| SM23T-208-3P | K-S-23T2/22 | 208/3P | 6 | 11,000 | 30.7 | 8 ga | 40 Amps | 15-50 Cordset |
| SM23T-3-240 | K-S-23T3/31 | 240/1P | 6 | 11,500 | 48.0 | 6 ga | 60 Amps | 6-50 Cordset |
| SM23T-3-240-3P | K-S-23T3/32 | 240/3P | 6 | 11,500 | 27.8 | 8 ga | 40 Amps | 15-50 Cordset |
| SM23T-3-208 | K-S-23T3/21 | 208/1P | 6 | 9,980 | 48.0 | 6 ga | 60 Amps | 6-50 Cordset |
| SM23T-3-208-3P | K-S-23T3/22 | 208/3P | 6 | 11,000 | 30.7 | 8 ga | 40 Amps | 15-50 Cordset |
| SM28T-3-240 | K-S-28T3/31 | 240/1P | 6 | 11,500 | 48.0 | 6 ga | 60 Amps | 6-50 Cordset |
| SM28T-3-240-3P | K-S-28T3/32 | 240/3P | 6 | 16,620 | 40.2 | 6 ga | 60 Amps | 15-50 Cordset |
| SM28T-3-208 | K-S-28T3/21 | 208/1P | 5 | 9,980 | 48.0 | 6 ga | 60 Amps | 6-50 Cordset |
| SM28T-3-208-3P | K-S-28T3/22 | 208/3P | 6 | 14,340 | 40.0 | 6 ga | 50 Amps | 15-50 Cordset |
| WORLD VOLTAGES | | | | | | | | |
| SM23T-220 | K-S-23T2/41 | 220/1P | 6 | 10,560 | 48.0 | 6 ga | 60 Amps | Direct Wire |
| SM23T-380-3PY | K-S-23T2/42 | 380/3PY | 6 | 11,400 | 17.7 | 12 ga | 25 Amps | Direct Wire |
| SM23T-3-220 | K-S-23T3/41 | 220/1P | 6 | 10,560 | 48.0 | 6 ga | 60 Amps | Direct Wire |
| SM23T-3-380-3PY | K-S-23T3/42 | 380/3PY | 6 | 11,400 | 17.7 | 12 ga | 25 Amps | Direct Wire |
| SM28T-3-220 | K-S-28T3/41 | 220/1P | 6 | 10,560 | 48.0 | 6 ga | 60 Amps | Direct Wire |
| SM28T-3-380-3PY | K-S-28T3/42 | 380/3PY | 6 | 15,058 | 24.2 | 8 ga | 40 Amps | Direct Wire |

MET UL499 Listing: All models are c-MET-us listed to UL499 standard. .

Power connection: A six foot cord with a 50 amp NEMA 6-50 for single phase units or a 15-50 plug for 3 phase units is included. (No neutral is necessary). World voltage kilns do not include a cord - they are direct wired. All kilns may be direct wired.

Wiring Diagrams: See hotkilns.com/wiring-diagrams for wiring diagrams.

Other voltages for any country in the world are available. Examples are 200V/3 Phase Delta, 220V/3 Phase Delta, 415V/3 Phase Wye and 400V/3 Phase Wye. CE Listing available in some countries. See 380 Volt diagrams for electrical specifications for 400V/3 Phase Wye and 415V/3 Phase Wye.

Dimension & Weight Specifications

| Model Number | Inside Dimensions | Cubic Feet | Brick Thick | Furniture Kit | Furn Kit Part No. | Outside Dimensions | Shipping Dimensions (w Kit) | Ship Wght Kiln Only | Ship Wght Kiln + Kit |
|--|-------------------|------------|-------------|----------------------------|-------------------|-----------------------|-----------------------------|---------------------|----------------------|
| SM23T | 23.3"D x 27"H | 7.0 | 2.5" | (2) 21" full, (4) half | H-E-K23T/00 | 30" W x 68" H x 40" D | 48" W x 60" H x 40" D | 360 lbs | 460 lbs |
| SM23T-3 | 22.3"D x 27"H | 6.7 | 3" | (2) 20" full, (4) half | H-E-K23T/30 | 30" W x 68" H x 40" D | 48" W x 61" H x 40" D | 380 lbs | 470 lbs |
| SM28T-3 | 28"D x 27"H | 10.2 | 3" | (8) 25.5" half | H-E-K28T/00 | 35" W x 74" H x 46" D | 48" W x 61" H x 40" D | 480 lbs | 615 lbs |
| METRIC DIMENSIONS (CM, LITERS & KG) | | | | | | | | | |
| SM23T | 59.2 D x 68.6 H | 199 | 6.35 | (2) 53.3cm full, (4) half | H-E-K23T/00 | 76 W x 173 H x 102 D | 122 W x 153 H x 102 D | 163 KG | 209 KG |
| SM23T-3 | 56.6 D x 68.6 H | 190 | 7.62 | (2) 50.8 cm full, (4) half | H-E-K23T/30 | 76 W x 173 H x 102 D | 122 W x 155 H x 102 D | 172 KG | 213 KG |
| SM28T-3 | 71.1 D x 68.6 H | 289 | 7.62 | (2) 50.6cm full, (4) half | H-E-K28T/00 | 89 W x 188 H x 117 D | 122 W x 155 H x 102 D | 218 KG | 279 KG |

MORE: See each model page on hotkilns.com to download PDF General Dimension Drawings for more outside and inside dimensions, minimum space requirements, BTU ventilation requirements, and kiln weight. See the Shipping Tab on the model page for complete shipping dimension and shipping weight information.

Moving and installation: The kiln comes assembled but can be quickly disassembled and reassembled to move through any door or up stairs. It comes packed in a skidded carton with secure foam-in-place packaging.



SM23T

Temperature Rating: Cone 6

Volume: 7 Cubic Feet

Brick Thickness: 2.5" Brick

Inside: 23.3" Diam x 27" High

Outside Dimensions: 30" W x 68" H x 40" D

Shipping Dim with Vent & Furn Kit: 48" W x 60" H x 40" D

Ship Weight (Kiln): 360 LBS

Ship Weight (Kiln, Vent & Furn Kit): 460 LBS



FURNITURE KIT FOR SM23T

Part Number: H-E-K23T/00

Includes: Two 21" (53.3 cm) full shelf and four half shelves, One post kit with 6 each 1/2", 1", 2", 4", 6", and 8" square posts, and one pair heat resistant gloves.



SM23T-3

Temperature Rating: Cone 6

Volume: 6.7 Cubic Feet

Brick Thickness: 3" Brick

Inside: 22.3" Diam x 27" High

Outside Dimensions: 30" W x 68" H x 40" D

Shipping Dim with Vent & Furn Kit: 48" W x 61" H x 40" D

Ship Weight (Kiln): 380 LBS

Ship Weight (Kiln, Vent & Furn Kit): 470 LBS



FURNITURE KIT FOR SM23T-3

Part Number: H-E-K23T/30

Includes: Two 20" (50.8 cm) full shelf and four half shelves, One post kit with 6 each 1/2", 1", 2", 4", 6", and 8" square posts, and one pair heat resistant gloves.



SM28T-3

Temperature Rating: Cone 6 (except for 208 volt, single phase)

Volume: 10.2 Cubic Feet

Brick Thickness: 2.5" Brick

Inside: 28" Diam x 27" High

Outside Dimensions: 35" W x 74" H x 46" D

Shipping Dim with Vent & Furn Kit: 48" W x 61" H x 40" D

Ship Weight (Kiln): 480 LBS

Ship Weight (Kiln, Vent & Furn Kit): 615 LBS



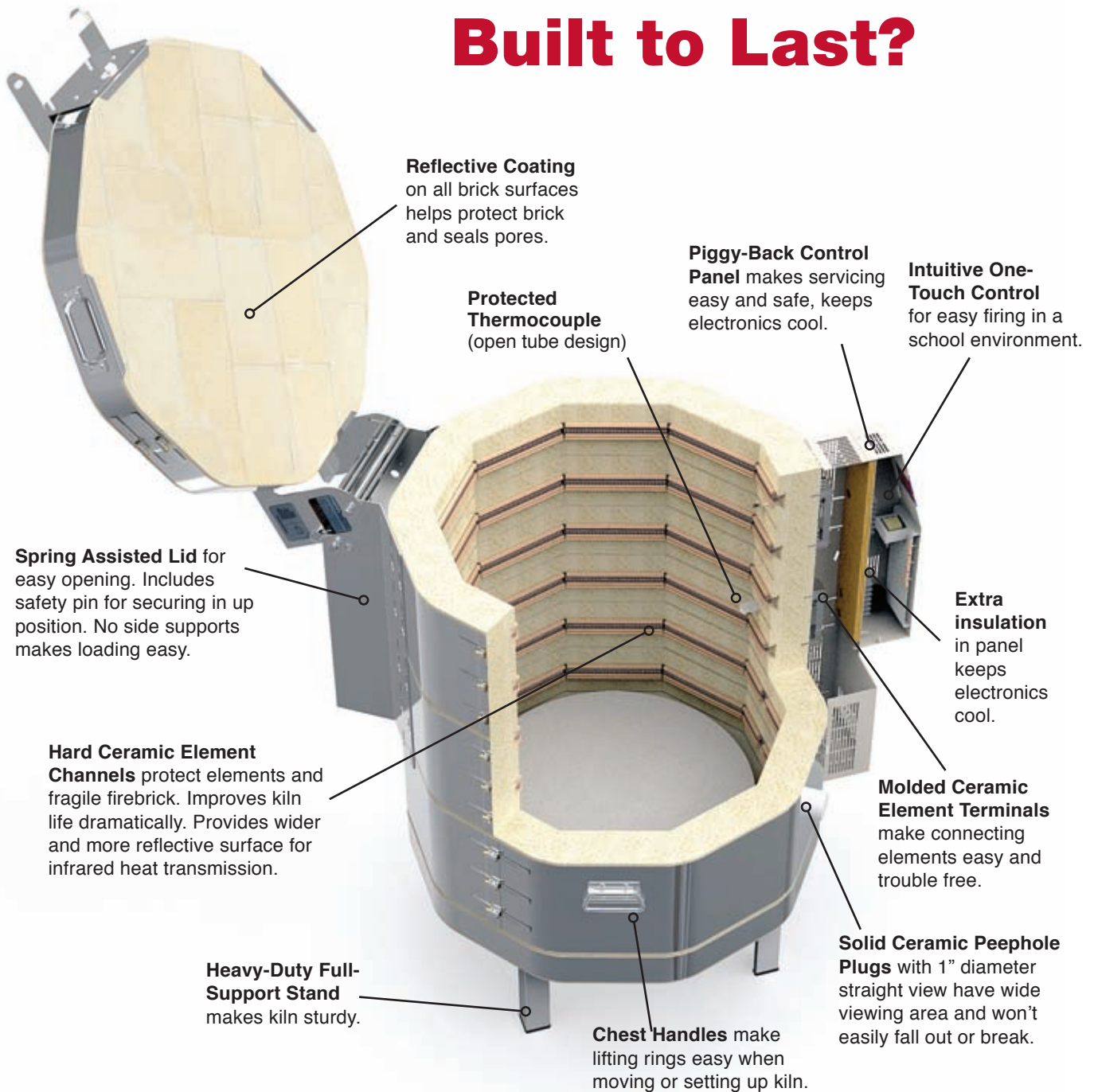
FURNITURE KIT FOR SM28T-3

Part Number: H-E-K28T/00

Includes: Eight 25.5" (25.5 cm) half shelves, One post kit with 6 each 1/2", 1", 2", 4", 6", and 8" square posts, and one pair heat resistant gloves.



What Makes School-Master Kilns Built to Last?



School-Master Kilns come with a FIVE-YEAR Warranty



505 Sharptown Road • Swedesboro, NJ 08085
Phone: 856.294.0077 • Fax: 856.294.0070
sales@hotkilns.com • hotkilns.com

KILNS BUILT TO LAST

Bulletin No: SM-0821