

Jupiter

Top-Loading Sectional Kilns

Highly customizable Jupiter kilns have a long pedigree back to the mid 1970s and have been continuously updated since then. They feature plug in kiln sections and completely separate control panels - unique in the kiln industry.

- **Plug-in Sectional Construction** makes Jupiter kilns very flexible. They can be easily taken apart
- **Hard Ceramic Element Holders** protect brick and make element changes fast and easy
- **Dynamic Zone Control** keeps temperatures uniform throughout kiln
- **Remote Panel** protects electronics and makes servicing easy
- **Protected Thermocouples**
- **Spring-Assist Hinge** on larger models does not need side support bars - makes loading easy from all sides
- **Super-Strong Aluminized Steel Stand** securely supports vent system
- **Customize to meet your exact needs.**



505 Sharptown Road • Swedesboro, NJ 08085
Phone: 856.294.0077 • Fax: 856.294.0070
sales@hotkilns.com • hotkilns.com

KILNS BUILT TO LAST

Bulletin No: JD-0821

Unique L&L Features with Lasting Benefits

CONE 10 RATING (FOR MOST MODELS)

Cone 10, 2350°F, 1290°C (see specification pages)

3" OF K23 FIREBRICK

3" K23 firebrick. JD1800 and JD2300 kilns can be special ordered with 2.5" of firebrick.

PATENTED CERAMIC ELEMENT HOLDERS

Protect brick from loading damage, keep elements from falling out of grooves, makes changing elements easy, and optimises heat transfer to load. Kiln lasts longer! (hotkilns.com/ceramic-holders)



BRICK COATING FOR DURABILITY

Proprietary reflective brick coating. This helps firebrick stay strong on the surface, helps prevent dusting on your work, and keeps the kiln clean inside. (hotkilns.com/reflective-coating)

HEAVY-DUTY LARGE ELEMENTS

Heavy-duty. 2 elements per section on JD1800 and JD2300 Series. Three elements per section on JD2900 Series. *Quad elements, which increase the element wire by having four rows of elements per section, are optional on all models. See Page 6.*

EXTRA CASE CLAMPS

Stainless worm gear case clamps keep case together and allow for adjustment over time. Three per 9" section, Two on the top and bottom. (hotkilns.com/case-clamps)

"EASY-OPEN, EASY-LOAD" SPRING-LOADED LID OPENS WIDE FOR LOADING

On JD2300 and JD2900 models, the whole kiln supports the lid (not just one section). Our positive safety pin secures the lid safely. No side support bars get in the way of loading when the lid is fully tilted back. (hotkilns.com/spring-hinge)

Note the backward angle with no side support bars for easy unobstructed loading.



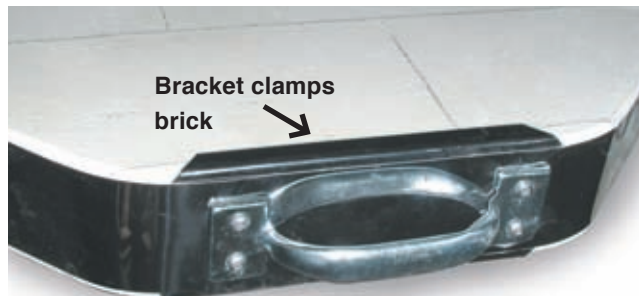
STAINLESS HINGE ON JD1800 MODELS

Chains secure the lid in place when open. (hotkilns.com/simple-hinge)



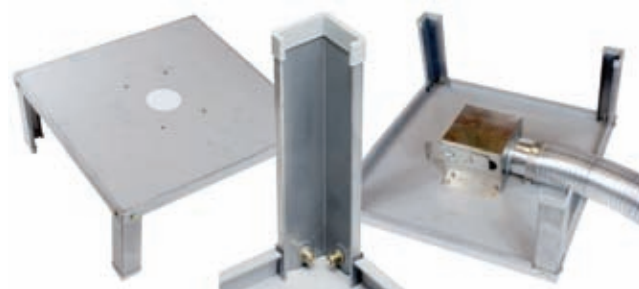
LID BRICK IS SECURED WITH CLIPS

Stainless Steel clips secure lids - not friction.
(hotkilns.com/lid-clips)



HEAVY-DUTY FULL-SUPPORT STAND

Heavy-duty 14 gauge solid stand with multiple bends for strength. Bolt on legs. Feet protectors included. Optional Vent Bypass Collection Box bolts onto underneath of stand with included studs. *Rolling stand is optional. See page 6.*
(hotkilns.com/full-stand)



THE ULTIMATE SECTIONAL KILN

Sectional kiln construction makes Jupiter kilns easy to move, set up and disassemble for maintenance or for loading. Sections are completely separate from the control panel. Each section has its own plug that plugs into a special receptacle in the control panel. Bottom is reversible. See page 11.
(hotkilns.com/sectional-jupiter)

CORROSION RESISTANT CONSTRUCTION

Stainless steel wrapped around brick. All stainless screws on case. Stand is galvanized. Vent parts are stainless steel or aluminum. Hinge is stainless steel. Control box is powder coated steel. (hotkilns.com/case)

SOLID PEEPHOLE PLUGS



Solid (non-fragile) ceramic plug with heat-locked mushroom head. 1" diameter full-view non-tapered (3/4" on JD2900 models).
(hotkilns.com/peephole-plugs)

EASY MULTI-PROGRAM DYNATROL

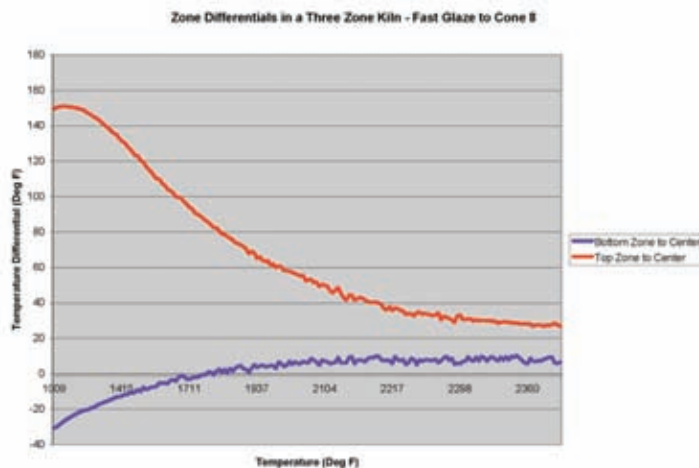


The time-tested DynaTrol with 4 Easy-Fire programs, 6 Vary-Fire programs, PreHeat, Delay, Program & Segment Review, and Diagnostics. Control is mounted on an angled panel for easy viewing.

Optional Genesis control (see page 8) features touch screen and free Wifi App for monitoring kiln. (hotkilns.com/dynatrol)

DYNAMIC ZONE CONTROL

This is a *standard* feature with either a DynaTrol or touch-screen Genesis control. The control separately measures temperatures in the bottom, middle, and top of the kiln and automatically adjusts the heat of two or three zones during the firing. Kiln temperatures are automatically equalized to within 1/2 cone or better. Zone control automatically compensates for many loading issues and element resistance changes. Additionally, L&L kilns are fundamentally uniform because the element holders radiate the heat more evenly. (hotkilns.com/zone-control)



SEPARATE COOL-FIRING CONTROL PANEL

All controls and components are mounted in a separate control panel that is mounted to either the element connection box or is floor mounted. Cords from the kiln sections plug into the panel. There is an air space between the panel and the kiln which keeps the controls cool - which is critical for long term health of the electronics.



HEAVY-GAUGE TYPE K THERMOCOUPLES

Type K 8 gauge thermocouple is protected by a open ceramic protection tube. This allows the thermocouple to accurately read the kiln temperature but protects the delicate tip of the thermocouple from damage while loading. Also any metallic flakes from the thermocouple will tend to drop inside the tube where they can be vacuumed out during normal maintenance. (hotkilns.com/protected-thermocouples)



CERAMIC ELEMENT CONNECTIONS

Proprietary all-ceramic element connection block makes changing elements easy. Terminal hardware allows you to get good contact with the element with minimal effort.

(hotkilns.com/ceramic-terminal)



MERCURY FREE RELAYS

Mercury free relays are standard. *See Page 9 for optional electronic SSRs for extra long element life and quiet operation.*

TWO CHEST HANDLES KILN SECTIONS

Chest Handles make the sections easy to lift.





Jupiter Top Loading Sectional Kilns

POWER CORD & PLUG ON MODELS UNDER 48 AMPS



50 Amp NEMA 6-50 six foot cord included for one phase.



50 Amp NEMA 15-50 six foot cord included for three phase. (All Non USA kilns are direct wired).

See Electrical Specifications pages. Same price for all voltages and phases.

COMPLETE VISUAL INSTRUCTIONS

No one has a better or more complete instruction manual. Our visual instructions address the needs of the artist, the installer, and the repair person. You get a fully illustrated operation and service manual. Many instructional videos are available. (hotkilns.com/videos)

L&L KILNS ARE EASY TO TROUBLESHOOT

Open up any L&L kiln control panel and see how easy it is to check amps, element resistance, and voltage. No other kiln can be serviced as quickly, easily, or inexpensively as an L&L kiln.

THREE-YEAR WARRANTY

See hotkilns.com/warranty. Email, web and phone support.

IN-DEPTH SUPPORT

One customer said: "I am truly impressed with your website, it is more than informative and your products are well designed. The fact that all the information, including repair manuals, are listed, speaks well of your dedication to customer service." Our website has thousands of pages of technical help - all easily searchable - plus we provide expert support with phone and email.

SUSTAINABLE MANUFACTURING

We use solar energy as our primary energy source.

SUPERIOR PACKAGING

Kilns are securely packed with tubes of foam molded to the kiln. Kilns are shipped in skidded cartons.

MET UL499 LISTING



c-MET-us listed to UL499 standards assures highest safety standards. (hotkilns.com/met)



Optional Kiln Furniture, Element Options, Rolling Stands

CONE 11 FURNITURE KITS

Shelves are high alumina cone 11 shelves. Each post kit includes six each 1/2", 1", 2", 4", 6" and 8" high square (1.5" x 1.5") cordierite posts. All furniture kits include one pair heat-resistant gloves. (hotkilns.com/kiln-furniture)



QUAD ELEMENT DESIGN

The combination of 1/2" diameter element coils, the doubled surface area of the Quad element design, and superior heat transfer of L&L's patented ceramic element holders, make this the best element system in the world today. (hotkilns.com/quad-option)



APM ELEMENTS

Special sintered alloy provides the ultimate in element life. The special sintered alloy inhibits grain growth and resistance change in the elements. (hotkilns.com/apm)

OPTIONAL CORDS

Single Phase JD18 and JD18-3 models can have a 12 foot 30 amp cord in various types. All other single phase models that are not direct wired can get a 12 foot NEMA 6-50 cord. (hotkilns.com/cord-options)

ROLLING STAND WITH LOCKING CASTERS

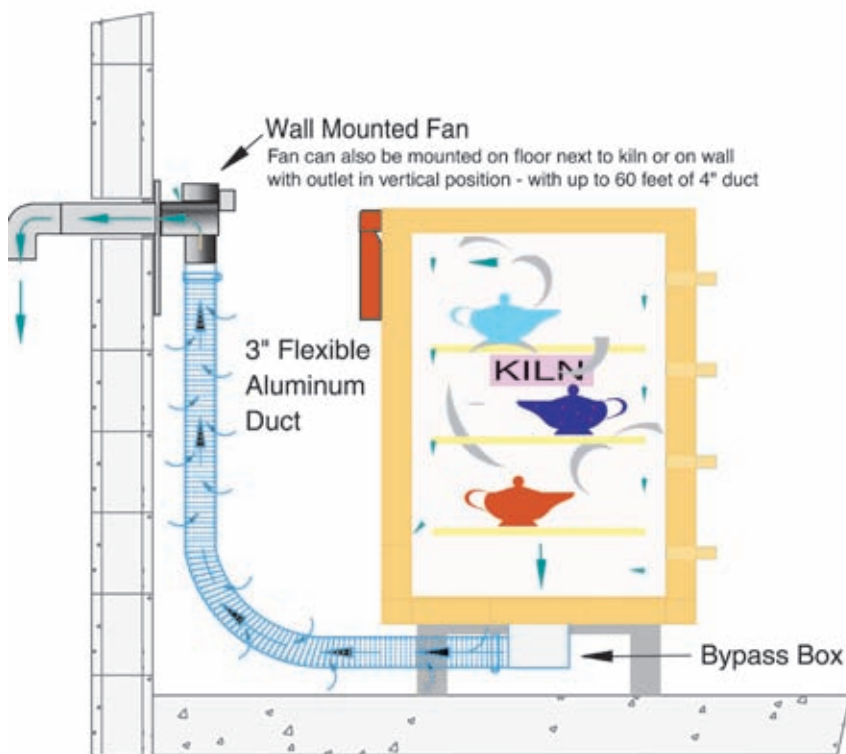
Allows kiln to be moved out of the way while not firing. L&L's rolling kiln stand features heavy gauge (14 ga) galvanized steel construction with multiple bends for extra strength, steel swivel locking casters, integrated vent collection box support, and guide rails for the kiln. Not recommended for 45" high kilns. (hotkilns.com/rolling-stands)



Ventilation Options & Accessories

DOWNDRAFT VENT SYSTEM

Vent-Sure downdraft vent vents fumes from kiln out of room and away from kiln. (hotkilns.com/vent)



VENT-SURE FEATURES

- Downdraft venting pulls air down to bottom of kiln
- Improves temperature uniformity inside the kiln
- Powerful 130 CFM fan motor, typically mounted on wall, allows fumes to be under vacuum in your studio
- The strong fan motor helps overcome static pressure in long exhaust lines. The duct may be up to 60 feet in length, and include up to four 90° bends
- 120 volts with on/off switch on cord (240 volts available)
- 15 foot long flexible aluminum duct
- Bypass collection box mounted on kiln allows adjustment of venting.
- Fan motor, mounted away from the kiln, stays cool and no vibration is transmitted to the kiln
- The included Multi-Mounting Bracket allows you to mount the vent on the floor or, alternately, to mount the vent on a wall so that the output of the vent is pointing up.
- Three-year Limited Warranty
- c-MET-us Listed to UL499 standards for use on c-MET-us L&L Kilns



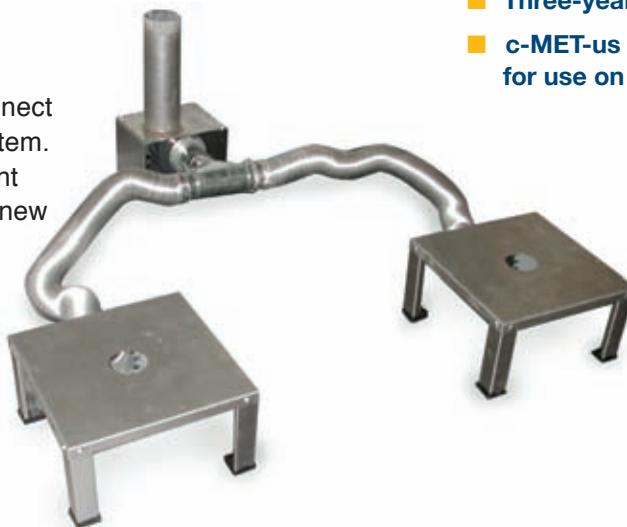
VENT CONTROL

Allows vent to be controlled with an event switch in the DynaTrol or Genesis. (For use with one kiln.) (hotkilns.com/vent-control)



VENT DOUBLER

This accessory allows you to connect two kilns to a Vent-Sure vent system. It can be added to an existing vent system or can be ordered with a new vent. In some cases you may be able to fire two kilns at once. The Vent-Sure has enough force to vent at least 25 cubic feet of kiln. That means, for instance, that two JD2927-3 kilns could be vented while firing at the same time. (hotkilns.com/doubler)



Genesis Touch Screen Control with App

GENESIS TOUCH SCREEN CONTROL

The Genesis control includes a touch screen interface and WIFI connectivity added to the proven software of the DynaTrol. More programming options and memory. Free App available to monitor kiln via WiFi. (hotkilns.com/genesis)



GENESIS FEATURES

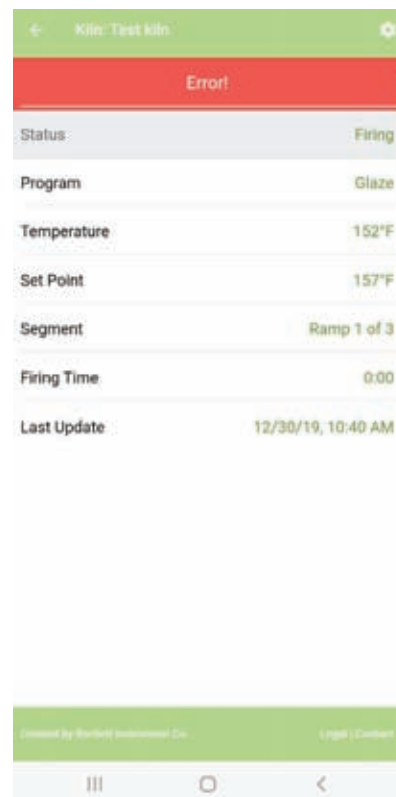
- Touch-screen intuitive technology for easy user interface.
- Easy-to-follow screen descriptions.
- Different user-interface levels, which can be set to match the user's firing knowledge.
- Graphical display of the firing process right at the controller. This means you can graph the firing in real time and compare the program with actual results.
- Glass programs included.
- Store up to 30 custom user programs.
- Up to 32 segments per program.
- Ability to make adjustments during a firing such as add segments, add temperature, and skip segments.
- Built in diagnostics testing
- Alarm
- Error Codes
- WiFi enabled for easy software updating.
- Included Phone App allows you to monitor kiln operation remotely (with no subscription fee).



The Genesis control fits right into the control box to replace the DynaTrol. That means you can upgrade anytime!



See a graph of your firing before you fire, while you fire and after you fire.



This shows the view you get on your phone with the Kiln Aid Phone app. Simply download the Kiln Aid phone app from your Google Play Store or Apple App Store, add your kiln, and begin monitoring as your kiln progresses through a firing. See temperatures, where you are in a program cycle, what program you are firing and error notifications.

More Control & Power Options

TYPE S THERMOCOUPLES

The best thermocouple for constant high fire applications. No thermocouple drift. Priced per thermocouple. Note that kilns with four or more sections still only have a three zone control.

(hotkilns.com/type-s)

PYROCIL SHEATHED THERMOCOUPLES

For greater sensitivity to temperature change. Use below 2200°F for sensitivity (glass is a good example). Priced per thermocouple. These are useful for sensitive industrial applications.

(hotkilns.com/pyrocil-tc)

SOLID STATE RELAYS

Industrial Grade Solid State Relays are quiet and result in longer element life because the switching time is so fast the elements don't expand and contract as much. The whole system includes extra large heat sinks, special fast acting fuses, cooling fan and extra safety relays. (hotkilns.com/ssr)



Kiln shown with the special control panel that houses the SSRs and/or High Limit Control

HIGH LIMIT BACK UP CONTROL

Bartlett High Limit Control with latching relay acts as a back up to the main control. If the main control fails for any reason then this acts as a "back stop" and shuts the kiln down.

(hotkilns.com/high-limit)

BACK UP CONTACTORS

Actuated by the High Limit Back Up Digital Control, back up contactors are completely redundant power contactors so that if one or more contactors fail in a closed position, then the kiln still cannot climb above the High Limit set point. (hotkilns.com/high-limit)

120 VOLT POWER SUPPLY

If there are problems with short power outages, voltage spikes, voltage drops, or excessive environmental line noise, this can cause unpredictable behavior in the electronic control. With this option the control is powered by a separate 120 volt line (with a standard 6 foot long cord) and that voltage is filtered through an EMI (Electrical Magnetic Interference) noise filter. (hotkilns.com/noise)

NEMA1 CONTROL PANEL

These are typically used for 480 volt models. They include integrated panel stand legs.

480 VOLT OPTION

Available on J2900 Series kilns only.



Pull-Apart Option

“PULL-APART” OPTION FOR SCULPTURE

Includes floor mount stand for control panel, lift off lid with extra handles but no hinge. This option allows the entire kiln to be dismantled to make it easy to load large sculptural pieces. The kiln sections are unplugged and then taken off one at a time. You can order a hinge as well but the hinge makes the kiln harder to take apart.



The Ultimate Sectional Kiln

WHAT IS GOOD ABOUT SECTIONAL CONSTRUCTION?

Sectional kiln construction make Jupiter kilns easy to move, set up and disassemble for maintenance or for loading.

TOTALLY SEPARATE

- Sections are completely separate from the control panel.
- Each section has its own plug that plugs into a special receptacle in the control panel.
- This makes it easy to disconnect the control panel and send it to the factory for expert service if ever necessary.

EXPANDING AND CONTRACTING THE SIZE

Because of the unusual ease of assembling and disassembling Jupiter kilns, some people have used this feature to expand or contract firing capacity as needed. This can be useful for firing small loads while still maintaining a larger firing capacity. It can also be useful for loading the kiln.

The 22.3", 23.3", and 28" diameter Jupiter kilns (10-sided and 12-sided) all come with the standard spring loaded counterbalance system for the lid. This attaches to either three rings or two rings and the kiln bottom.

If you do want to adjust the size of the kiln you will need to remove the hinge (not too difficult).

PULL-APART OPTION

To get around the above issues we offer a variation in our Jupiter line, which is meant just for those people who definitely want to assemble and disassemble their kilns often.

This option consists of not putting a hinge on the kiln at all, having four handles on the top, and mounting the control panel on a floor stand like we do on the DaVinci control panels. The sections are not tied together. We provide 45" long cords on all the sections.

CONTROL CONSIDERATIONS

The DynaTrol is easily programmable to allow for one, two, or three zone operation. If you had a three section kiln and wanted to fire the kiln with just two sections, you would simply plug the two sections into two of the receptacles on the panel and program the DynaTrol for two-zone operation.

If you anticipate making the kiln larger, you should special order a larger control panel (with the proper number of zones).

You can see the price differential between a panel with different numbers of circuits in our parts list. The differential between the two panels is added to the price of the new kiln. For instance, if you are buying a JD230 three circuit panel with a JD245 five circuit panel you would subtract the price of the Jupiter three circuit panel from the price of the Jupiter five circuit panel and add this difference to the price of the kiln.

If you are anticipating changing a JD230 to a JD236 or JD245 you will need to order a larger panel up front.

This gets a bit more complicated if you are getting or planning to get a powered bottom with an automatic kiln. This is because the wiring for the powered bottom is slightly different on automatic kilns (i.e. where it gets its control output from) and you would not plug a regular section into the powered bottom circuit or vice-versa. Consult factory if you have specific questions.

Electrical Specifications for JD1800 SERIES

| Model Numbers | Part Number for 2.5" Brick | Part Number for 3" Brick | Volt/ Phase | Watts | Amps | Wire Size | Fuse Size | Power Connection |
|-------------------------------|----------------------------|--------------------------|-------------|-------|------|-----------|-----------|------------------|
| JD18-240 / JD18-3-240 | K-A-180H/31 | K-A-180D/31 | 240/1P | 5,520 | 23.0 | 10 ga | 30 Amps | 6-50 Cordset |
| JD18-240-3P / JD18-3-240-3P | K-A-180H/32 | K-A-180D/32 | 240/3P | 5,520 | 19.9 | 12 ga | 25 Amps | 15-50 Cordset |
| JD18-208 / JD18-3-208 | K-A-180H/21 | K-A-180D/21 | 208/1P | 5,520 | 26.5 | 8 ga | 40 Amps | 6-50 Cordset |
| JD18-208-3P / JD18-3-208-3P | K-A-180H/22 | K-A-180D/22 | 208/3P | 5,520 | 23.0 | 10 ga | 30 Amps | 15-50 Cordset |
| JD18X-240 / JD18X-3-240 | K-A-18XH/31 | K-A-18XD/31 | 240/1P | 8,280 | 34.5 | 6 ga | 50 Amp | 6-50 Cordset |
| JD18X-240-3P / JD18X-3-240-3P | K-A-18XH/32 | K-A-18XD/32 | 240/3P | 8,280 | 19.9 | 12 ga | 25 Amp | 15-50 Cordset |
| JD18X-208 / JD18X-3-208 | K-A-18XH/21 | K-A-18XD/21 | 208/1P | 8,280 | 39.8 | 6 ga | 50 Amp | 6-50 Cordset |
| JD18X-208-3P / JD18X-3-208-3P | K-A-18XH/22 | K-A-18XD/22 | 208/3P | 8,280 | 23.0 | 10 ga | 30 Amp | 15-50 Cordset |
| WORLD VOLTAGES | | | | | | | | |
| JD18-220 / JD18-3-220 | K-A-180H/41 | K-A-180D/41 | 220/1P | 5,520 | 25.1 | 8 ga | 40 Amp | Direct Wire |
| JD18-380-3P / JD18-3-380-3PY | K-A-180H/52 | K-A-180D/52 | 380/3PY | 5,520 | 12.5 | 14 ga | 20 Amp | Direct Wire |
| JD18X-220 / JD18X-3-220 | K-A-18XH/41 | K-A-18XD/41 | 220/1P | 8,280 | 37.6 | 6 ga | 50 Amp | Direct Wire |
| JD18X-380-3P/ JD18X-3-380-3PY | K-A-18XH/52 | K-A-18XD/52 | 380/3PY | 8,280 | 12.5 | 14 ga | 20 Amp | Direct Wire |

MET UL499 Listing: All models are c-MET-us listed to UL499 standard.

Cone Rating: All JD18 models are rated to Cone 10.

Wiring Diagrams: See the **Electrical Tab** for each kiln model to get the wiring diagram for each voltage.

Power connection: A six foot cord with a 50 amp NEMA 6-50 for single phase units or a 15-50 plug for 3 phase units is included. (No neutral is necessary). World voltage kilns do not include a cord - they are direct wired. All kilns may be direct wired.

Optional 30 Amp Cord for Single Phase JD18 and JD18-3: The standard NEMA 6-50 amp plug can be changed to a NEMA 14-30 or NEMA 6-30 at no charge. A NEMA 10-30 is available for a small charge.

Elements: All elements are of equal resistance value. JD1800 kilns have two elements per kiln section. All Jupiter kilns with the Quad option feature two elements in four rows.

Other voltages for any country in the world are available. Examples are 200V/3 Phase Delta, 220V/3 Phase Delta, 415V/3 Phase Wye and 400V/3 Phase Wye. CE Listing available in some countries. See 380 Volt diagrams for electrical specifications for 400V/3 Phase Wye and 415V/3 Phase Wye.

Moving and installation: The kiln comes assembled but can be quickly disassembled and reassembled to move through any door or up stairs. It comes packed in a skidded carton with secure foam-in-place packaging.

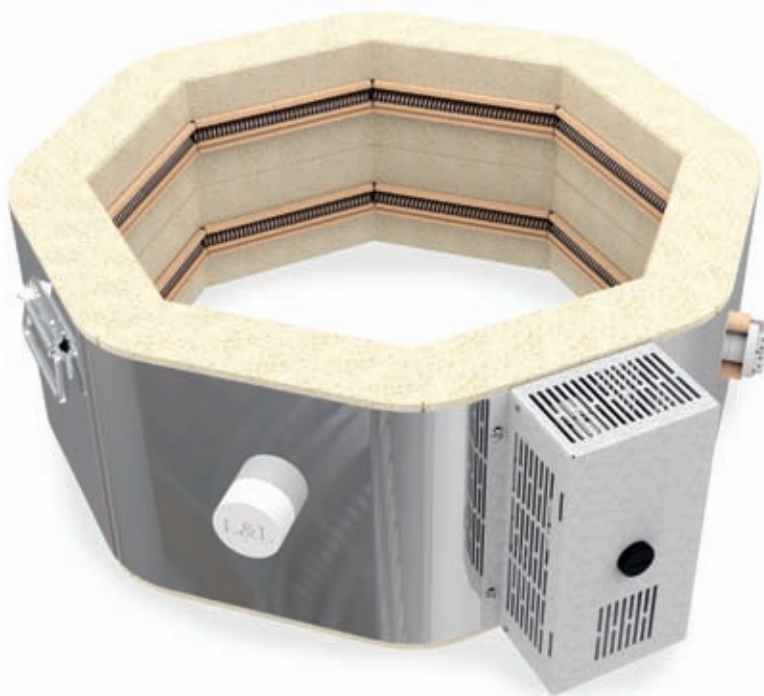
Note about 2.5" models: Kilns may be made by special order with 2.5" of firebrick. The electrical ratings do not change.

Dimension & Weight Specifications for JD1800 SERIES

| Model Number | Inside Dimensions | Cubic Feet | Brick Thick | Furniture Kit | Furn Kit Part No. | Outside Dimensions | Shipping Dimensions (w Kit and Vent) | Ship Weight Kiln Only | Ship Wght Kiln/Kit/Vent |
|--|-------------------|------------|-------------|--------------------------|-------------------|-----------------------|--------------------------------------|-----------------------|-------------------------|
| JD18 | 17.5"D x 18"H | 2.6 | 2.5" | (1) 15.5" full, (4) half | H-J-K180/00 | 31" W x 55" H x 33" D | 48" W x 51" H x 40" D | 215 LBS | 265 LBS |
| JD18-3 | 16.5"D x 18"H | 2.5 | 3" | (1) 15" full, (4) half | H-J-K180/30 | 31" W x 55" H x 33" D | 48" W x 52" H x 40" D | 240 LBS | 290 LBS |
| JD18X | 17.5"D x 27"H | 3.9 | 2.5" | (2) 15.5" full, (4) half | H-J-K18X/00 | 31" W x 64" H x 33" D | 48" W x 60" H x 40" D | 265 LBS | 325 LBS |
| JD18X-3 | 16.5"D x 27"H | 3.7 | 3" | (2) 15" full, (4) half | H-J-K18X/30 | 31" W x 64" H x 33" D | 48" W x 61" H x 40" D | 290 LBS | 350 LBS |
| METRIC DIMENSIONS (CM, LITERS & KG) | | | | | | | | | |
| JD18 | 44.5 D x 45.7 H | 74 | 6.35 | (1) 39.4 full, (4) half | H-J-K180/00 | 79 W x 139 H x 84 D | 122 W x 130 H x 102 D | 98 KG | 121 KG |
| JD18-3 | 41.9 D x 45.7 H | 71 | 7.62 | (1) 38.1 full, (4) half | H-J-K180/30 | 79 W x 139 H x 84 D | 122 W x 133 H x 102 D | 109 KG | 132 KG |
| JD18X | 44.5 D x 68.6 H | 111 | 6.35 | (2) 39.4 full, (4) half | H-J-K18X/00 | 79 W x 150 H x 84 D | 122 W x 153 H x 102 D | 121 KG | 148 KG |
| JD18X-3 | 41.9 D x 68.6 H | 105 | 7.62 | (2) 38.1 full, (4) half | H-J-K18X/30 | 79 W x 150 H x 84 D | 122 W x 155 H x 102 D | 132 KG | 159 KG |

MORE: See each model page on hotkilns.com to download PDF General Dimension Drawings for more outside and inside dimensions, minimum space requirements, BTU ventilation requirements, and kiln weight. See the Shipping Tab on the model page for complete shipping dimension and shipping weight information.

Note about 2.5" models: Kilns may be made by special order with 2.5" of firebrick. Specifications are shown above.



JD18-3

Temperature Rating: Cone 10

Volume: 2.5 Cubic Feet

Brick Thickness: 3" Brick

Inside: 16.5" Diam x 18" High

Outside Dimensions: 31" W x 55" H x 33" D

Shipping Dim with Vent & Furn Kit: 48" W x 52" H x 40" D

Ship Weight (Kiln): 240 LBS

Ship Weight (Kiln, Vent & Furn Kit): 290 LBS



FURNITURE KIT FOR JD18-3

Part Number: H-J-K180/30

Includes: One 15" Full Round Shelf and Four 15" Half Round Shelves (5/8" thick), One small post kit with 4 each 1/2", 1", 2", 4", and 6" square posts, and one pair heat resistant gloves.



JD18X-3

Temperature Rating: Cone 10

Volume: 3.7 Cubic Feet

Brick Thickness: 3" Brick

Inside: 16.5" Diam x 27" High

Outside Dimensions: 31" W x 64" H x 33" D

Shipping Dim with Vent & Furn Kit: 48" W x 61" H x 40" D

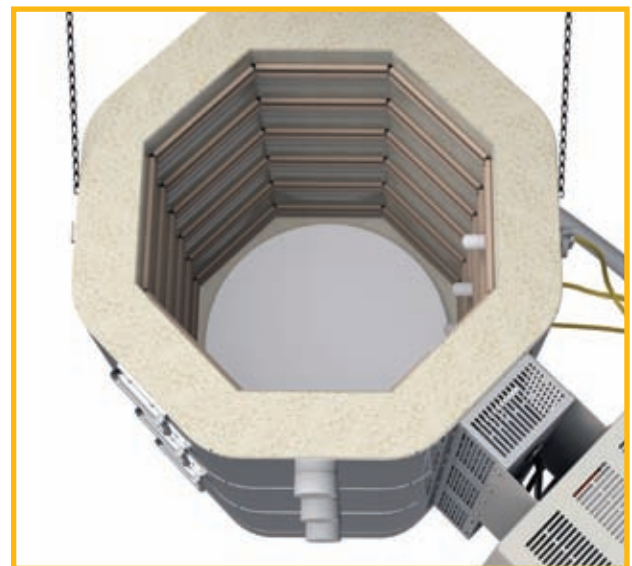
Ship Weight (Kiln): 290 LBS

Ship Weight (Kiln, Vent & Furn Kit): 350 LBS

FURNITURE KIT FOR JD18X-3

Part Number: H-J-K18X/30

Includes: Two 15" Full Round Shelves and Four 15" Half Round Shelves (5/8" thick), One post kit with 6 each 1/2", 1", 2", 4", 6", and 8" square posts, and one pair heat resistant gloves.



Electrical Specifications for JD2300 SERIES (USA)

| Model Number | Power Bottom | Part Number for 2.5" Brick | Part Number for 3" Brick | Volt/Phase | Watts | Amps | Wire Size | Fuse Size | Power Connection |
|---------------------------------------|--------------|----------------------------|--------------------------|------------|--------|------|-----------|-----------|------------------|
| JD23V-240 / JD23V-3-240 | No | K-A-230H/31 | K-A-230D/31 | 240/1P | 7,030 | 29.3 | 8 ga | 40 | 6-50 Cordset |
| JD23V-240-3P / JD23V-3-240-3P | No | K-A-230H/32 | K-A-230D/32 | 240/3P | 7,030 | 25.4 | 8 ga | 40 | 15-50 Cordset |
| JD23V-208 / JD23V-3-208 | No | K-A-230H/21 | K-A-230D/21 | 208/1P | 6,096 | 29.3 | 8 ga | 40 | 6-50 Cordset |
| JD23V-208-3P / JD23V-3-208-3P | No | K-A-230H/22 | K-A-230D/22 | 208/3P | 6,096 | 25.4 | 8 ga | 40 | 15-50 Cordset |
| JD23V-PB-240 / JD23V-3-PB-240 | Yes | K-A-230P/31 | K-A-230B/31 | 240/1P | 8,800 | 36.6 | 6 ga | 50 | 6-50 Cordset |
| JD23V-PB-240-3P / JD23V-3-PB-240-3P | Yes | K-A-230P/32 | K-A-230B/32 | 240/3P | 8,800 | 25.4 | 8 ga | 40 | 15-50 Cordset |
| JD23V-PB-208 / JD23V-3-PB-208 | Yes | K-A-230P/21 | K-A-230B/21 | 208/1P | 7,620 | 36.6 | 6 ga | 50 | 6-50 Cordset |
| JD23V-PB-208-3P / JD23V-3-PB-208-3P | Yes | K-A-230P/22 | K-A-230B/22 | 208/3P | 7,620 | 25.4 | 8 ga | 40 | 15-50 Cordset |
| JD230V-240 / JD230V-3-240 | No | K-A-231H/31 | K-A-231D/31 | 240/1P | 10,554 | 43.9 | 6 ga | 60 | 6-50 Cordset |
| JD230V-240-3P / JD230V-3-240-3P | No | K-A-231H/32 | K-A-231D/32 | 240/3P | 10,554 | 25.4 | 8 ga | 40 | 15-50 Cordset |
| JD230V-208 / JD230V-3-208 | No | K-A-231H/21 | K-A-231D/21 | 208/1P | 9,144 | 44.0 | 6 ga | 60 | 6-50 Cordset |
| JD230V-208-3P / JD230V-3-208-3P | No | K-A-231H/22 | K-A-231D/22 | 208/3P | 9,144 | 25.4 | 8 ga | 40 | 15-50 Cordset |
| JD230V-PB-240 / JD230V-3-PB-240 | Yes | K-A-231P/31 | K-A-231B/31 | 240/1P | 12,303 | 51.3 | 4 ga | 70 | Direct Wire |
| JD230V-PB-240-3P / JD230V-3-PB-240-3P | Yes | K-A-231P/32 | K-A-231B/32 | 240/3P | 12,303 | 31.9 | 8 ga | 40 | 15-50 Cordset |
| JD230V-PB-208 / JD230V-3-PB-208 | Yes | K-A-231P/21 | K-A-231B/21 | 208/1P | 10,668 | 51.3 | 4 ga | 70 | Direct Wire |
| JD230V-PB-208-3P / JD230V-3-PB-208-3P | Yes | K-A-231P/22 | K-A-231B/22 | 208/3P | 10,668 | 31.9 | 8 ga | 40 | 15-50 Cordset |
| JD236V-240 / JD236V-3-240 | No | K-A-236H/31 | K-A-236D/31 | 240/1P | 14,060 | 58.6 | 3 ga | 80 | Direct Wire |
| JD236V-240-3P / JD236V-3-240-3P | No | K-A-236H/32 | K-A-236D/32 | 240/3P | 14,060 | 38.8 | 6 ga | 50 | 15-50 Cordset |
| JD236V-208 / JD236V-3-208 | No | K-A-236H/21 | K-A-236D/21 | 208/1P | 12,192 | 58.6 | 3 ga | 80 | Direct Wire |
| JD236V-208-3P / JD236V-3-208-3P | No | K-A-236H/22 | K-A-236D/22 | 208/3P | 12,192 | 38.8 | 6 ga | 50 | 15-50 Cordset |
| JD236V-PB-240 / JD236V-3-PB-240 | Yes | K-A-236P/31 | K-A-236B/31 | 240/1P | 15,817 | 65.9 | 2 ga | 90 | Direct Wire |
| JD236V-PB-240-3P / JD236V-3-PB-240-3P | Yes | K-A-236P/32 | K-A-236B/32 | 240/3P | 15,817 | 44.6 | 6 ga | 60 | 15-50 Cordset |
| JD236V-PB-208 / JD236V-3-PB-208 | Yes | K-A-236P/21 | K-A-236B/21 | 208/1P | 13,716 | 65.9 | 2 ga | 90 | Direct Wire |
| JD236V-PB-208-3P / JD236V-3-PB-208-3P | Yes | K-A-236P/22 | K-A-236B/22 | 208/3P | 13,716 | 44.6 | 6 ga | 60 | Direct Wire |
| JD245V-240 / JD245V-3-240 | No | K-A-245H/31 | K-A-245D/31 | 240/1P | 17,575 | 73.2 | 1 ga | 100 | Direct Wire |
| JD245V-240-3P / JD245V-3-240-3P | No | K-A-245H/32 | K-A-245D/32 | 240/3P | 17,575 | 50.7 | 4 ga | 70 | Direct Wire |
| JD245V-208 / JD245V-3-208 | No | K-A-245H/21 | K-A-245D/21 | 208/1P | 15,240 | 73.3 | 1 ga | 100 | Direct Wire |
| JD245V-208-3P / JD245V-3-208-3P | No | K-A-245H/22 | K-A-245D/22 | 208/3P | 15,240 | 50.8 | 4 ga | 70 | Direct Wire |
| JD245V-PB-240 / JD245V-3-PB-240 | Yes | K-A-245P/31 | K-A-245B/31 | 240/1P | 19,333 | 80.6 | 1 ga | 110 | Direct Wire |
| JD245V-PB-240-3P / JD245V-3-PB-240-3P | Yes | K-A-245P/32 | K-A-245B/32 | 240/3P | 19,333 | 50.7 | 4 ga | 70 | Direct Wire |
| JD245V-PB-208 / JD245V-3-PB-208 | Yes | K-A-245P/21 | K-A-245B/21 | 208/1P | 16,764 | 80.6 | 1 ga | 110 | Direct Wire |
| JD245V-PB-208-3P / JD245V-3-PB-208-3P | Yes | K-A-245P/22 | K-A-245B/22 | 208/3P | 16,764 | 50.8 | 4 ga | 70 | Direct Wire |

MET UL499 Listing: All models are c-MET-us listed to UL499 standard.

Wiring Diagrams: See the **Electrical Tab** for each kiln model to get the wiring diagram for each voltage.

Power connection: A six foot cord with a 50 amp NEMA 6-50 for single phase units or a 15-50 plug for 3 phase units is included. (No neutral is necessary). All kilns may be direct wired.

Elements: All elements are of equal resistance value. JD2300 kilns have two elements per kiln section. Powered Bottom adds one element. All Jupiter kilns with the Quad option feature two elements in four rows.

Note about 2.5" models: Kilns may be made by special order with 2.5" of firebrick. The electrical ratings do not change.

Power Bottoms: Power bottoms are special order only. Electrical specifications are shown above.

Electrical Specifications for JD2300 SERIES (World)

| Model Number | Power Bottom | Part Number for 2.5" Brick | Part Number for 3" Brick | Volt/ Phase | Watts | Amps | Wire Size | Fuse Size | Power Connection |
|---|--------------|----------------------------|--------------------------|-------------|--------|------|-----------|-----------|------------------|
| JD23V-220 / JD23V-3-220 | No | K-A-230H/41 | K-A-230D/41 | 220V/1P | 6,450 | 29.3 | 8 ga | 40 | Direct Wire |
| JD23V-380-3PY / JD23V-3-380-3PY | No | K-A-230H/52 | K-A-230D/52 | 380/3PY | 6,450 | 14.7 | 14 ga | 20 | Direct Wire |
| JD23V-PB-220 / JD23V-3-PB-220 | Yes | K-A-230P/41 | K-A-230B/41 | 220V/1P | 8,063 | 36.7 | 6 ga | 50 | Direct Wire |
| JD23V-PB-380-3PY / JD23V-3-PB-380-3PY | Yes | K-A-230P/52 | K-A-230B/52 | 380/3PY | 8,063 | 14.7 | 14 ga | 20 | Direct Wire |
| JD230V-220 / JD230V-3-220 | No | K-A-231H/41 | K-A-231D/41 | 220V/1P | 9,675 | 44.0 | 6 ga | 60 | Direct Wire |
| JD230V-380-3PY / JD230V-3-380-3PY | No | K-A-231H/52 | K-A-231D/52 | 380/3PY | 9,675 | 14.7 | 14 ga | 20 | Direct Wire |
| JD230V-PB-220 / JD230V-3-PB-220 | Yes | K-A-231P/41 | K-A-231B/41 | 220V/1P | 11,288 | 51.3 | 4 ga | 70 | Direct Wire |
| JD230V-PB-380-3PY / JD230V-3-PB-380-3PY | Yes | K-A-231P/52 | K-A-231B/52 | 380/3PY | 11,288 | 22.0 | 10 ga | 30 | Direct Wire |
| JD236V-220 / JD236V-3-220 | No | K-A-236H/41 | K-A-236D/41 | 220V/1P | 12,900 | 58.6 | 3 ga | 80 | Direct Wire |
| JD236V-380-3PY / JD236V-3-380-3PY | No | K-A-236H/52 | K-A-236D/52 | 380/3PY | 12,900 | 29.3 | 8 ga | 40 | Direct Wire |
| JD236V-PB-220 / JD236V-3-PB-220 | Yes | K-A-236P/41 | K-A-236B/41 | 220V/1P | 14,512 | 66.0 | 2 ga | 90 | Direct Wire |
| JD236V-PB-380-3PY / JD236V-3-PB-380-3PY | Yes | K-A-236P/52 | K-A-236B/52 | 380/3PY | 14,512 | 29.3 | 8 ga | 40 | Direct Wire |
| JD245V-220 / JD245V-3-220 | No | K-A-245H/41 | K-A-245D/41 | 220V/1P | 16,125 | 73.3 | 1 ga | 100 | Direct Wire |
| JD245V-380-3PY / JD245V-3-380-3PY | No | K-A-245H/52 | K-A-245D/52 | 380/3PY | 16,125 | 29.3 | 8 ga | 40 | Direct Wire |
| JD245V-PB-220 / JD245V-3-PB-220 | Yes | K-A-245P/41 | K-A-245B/41 | 220V/1P | 17,738 | 80.6 | 1 ga | 110 | Direct Wire |
| JD245V-PB-380-3PY / JD245V-3-PB-380-3PY | Yes | K-A-245P/52 | K-A-245B/52 | 380/3PY | 17,738 | 29.3 | 8 ga | 40 | Direct Wire |

MET UL499 Listing: All models are c-MET-us listed to UL499 standard.

Wiring Diagrams: See the **Electrical Tab** for each kiln model to get the wiring diagram for each voltage.

Power connection: World voltage kilns do not include a cord - they are direct wired.

Elements: All elements are of equal resistance value. JD2300 kilns have two elements per kiln section. Powered Bottom adds one element. All Jupiter kilns with the Quad option feature two elements in four rows.

Other voltages for any country in the world are available. Examples are 200V/3 Phase Delta, 220V/3 Phase Delta, 415V/3 Phase Wye and 400V/3 Phase Wye. CE Listing available in some countries. See 380 Volt diagrams for electrical specifications for 400V/3 Phase Wye and 415V/3 Phase Wye.

Note about 2.5" models: Kilns may be made by special order with 2.5" of firebrick. The electrical ratings do not change.

Power Bottoms: Power bottoms are special order only. Electrical specifications are shown above.

Dimension & Weight Specifications for JD2300 SERIES

| Model Number | Inside Dimensions | Cubic Feet | Brick Thick | Furniture Kit | Furn Kit Part No. | Outside Dimensions | Shipping Dimensions (w Kit and Vent) | Ship Weight Kiln Only | Ship Wght Kiln/Kit/Vent |
|--|-------------------|------------|-------------|-------------------------|-------------------|-----------------------|--------------------------------------|-----------------------|-------------------------|
| JD23V | 23-3/8"D x 18"H | 4.7 | 2-1/2" | (1) 21" full, (4) half | H-J-K230/00 | 30" W x 59" H x 43" D | 48" W x 51" H x 40" D | 315 LBS | 395 LBS |
| JD23V-3 | 22-3/8"D x 18"H | 4.5 | 3" | (1) 20" full, (4) half | H-J-K230/30 | 30" W x 59" H x 43" D | 48" W x 52" H x 40" D | 330 LBS | 405 LBS |
| JD230V | 23-3/8"D x 27"H | 7.0 | 2-1/2" | (2) 21" full, (4) half | H-J-K23X/00 | 30" W x 68" H x 43" D | 48" W x 60" H x 40" D | 365 LBS | 465 LBS |
| JD230V-3 | 22-3/8"D x 27"H | 6.7 | 3" | (2) 20" full, (4) half | H-J-K23X/30 | 30" W x 68" H x 43" D | 48" W x 61" H x 40" D | 385 LBS | 475 LBS |
| JD236V | 23-3/8"D x 36"H | 9.4 | 2-1/2" | (3) 21" full, (4) half | H-J-K236/00 | 30" W x 74" H x 43" D | 48" W x 60" H x 40" D | 425 LBS | 540 LBS |
| JD236V-3 | 22-3/8"D x 36"H | 8.9 | 3" | (3) 20" full, (4) half | H-J-K236/30 | 30" W x 74" H x 43" D | 48" W x 61" H x 40" D | 445 LBS | 550 LBS |
| JD245V | 23-3/8"D x 45"H | 11.8 | 2-1/2" | (4) 21" full, (4) half | H-J-K245/00 | 30" W x 86" H x 43" D | 48" W x xx" H x 40" D | 490 LBS | 625 LBS |
| JD245V-3 | 22-3/8"D x 45"H | 11.1 | 3" | (4) 20" full, (4) half | H-J-K245/30 | 30" W x 86" H x 43" D | 48" W x xx" H x 40" D | 520 LBS | 645 LBS |
| METRIC DIMENSIONS (CM, LITERS & KG) | | | | | | | | | |
| JD23V | 59.2 D x 45.7 H | 134 | 6.35 | (1) 53.3 full, (4) half | H-J-K230/00 | 76 W x 150 H x 109 D | 122 W x 130 H x 102 D | 143 KG | 180 KG |
| JD23V-3 | 56.6 D x 45.7 H | 128 | 7.62 | (1) 50.8 full, (4) half | H-J-K230/00 | 76 W x 150 H x 109 D | 122 W x 133 H x 102 D | 150 KG | 184 KG |
| JD230V | 59.2 D x 68.6 H | 199 | 6.35 | (2) 53.3 full, (4) half | H-J-K23X/00 | 76 W x 173 H x 109 D | 122 W x 153 H x 102 D | 166 KG | 211 KG |
| JD230V-3 | 56.6 D x 68.6 H | 190 | 7.62 | (2) 50.8 full, (4) half | H-J-K23X/30 | 76 W x 173 H x 109 D | 122 W x 155 H x 102 D | 175 KG | 216 KG |
| JD236V | 59.2 D x 91.4 H | 267 | 6.35 | (3) 53.3 full, (4) half | H-J-K236/00 | 76 W x 188 H x 109 D | 122 W x 153 H x 102 D | 193 KG | 209 KG |
| JD236V-3 | 56.6 D x 91.4 H | 253 | 7.62 | (3) 50.6 full, (4) half | H-J-K236/30 | 76 W x 188 H x 109 D | 122 W x 155 H x 102 D | 202 KG | 220 KG |
| JD245V | 59.2 D x 114.3 H | 335 | 6.35 | (4) 53.3 full, (4) half | H-J-K245/00 | 76 W x 218 H x 109 D | 122 W x 216 H x 102 D | 222 KG | 284 KG |
| JD245V-3 | 56.8 D x 114.3 H | 315 | 7.62 | (4) 50.8 full, (4) half | H-J-K245/30 | 76 W x 218 H x 109 D | 122 W x 216 H x 102 D | 236 KG | 293 KG |

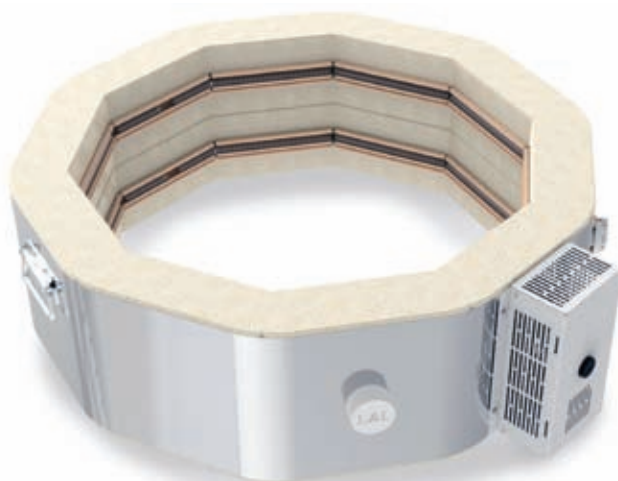
MORE: See each model page on hotkilns.com to download PDF General Dimension Drawings for more outside and inside dimensions, minimum space requirements, BTU ventilation requirements, and kiln weight. See the Shipping Tab on the model page for complete shipping dimension and shipping weight information.

General Dimension Drawings: See each model page on hotkilns.com to download PDF drawings.

Moving and installation: The kiln comes assembled but can be quickly disassembled and reassembled to move through any door or up stairs. It comes packed in a skidded carton with secure foam-in-place packaging.

Shipping Dimensions: See website for shipping dimensions with various combinations of options.

Note about 2.5" models: Kilns may be made by special order with 2.5" of firebrick. Specifications are shown above.



JD23-3

Temperature Rating: Cone 10

Volume: 4.5 Cubic Feet

Brick Thickness: 3" Brick

Inside: 22-3/8" Diam x 18" High

Outside Dimensions: 30" W x 59" H x 43" D

Shipping Dim with Vent & Furn Kit: 48" W x 52" H x 40" D

Ship Weight (Kiln): 330 LBS

Ship Weight (Kiln, Vent & Furn Kit): 405 LBS



FURNITURE KIT FOR JD23-3

Part Number: H-J-K230/30

Includes: One 20" Full Round Shelf and Four 20" Half Round Shelves (3/4" thick), One post kit with 6 each 1/2", 1", 2", 4", 6", and 8" square posts, and one pair heat resistant gloves.



JD230-3

Temperature Rating: Cone 10

Volume: 6.7 Cubic Feet

Brick Thickness: 3" Brick

Inside: 22-3/8" Diam x 27" High

Outside Dimensions: 30" W x 68" H x 43" D

Shipping Dim with Vent & Furn Kit: 48" W x 61" H x 40" D

Ship Weight (Kiln): 385 LBS

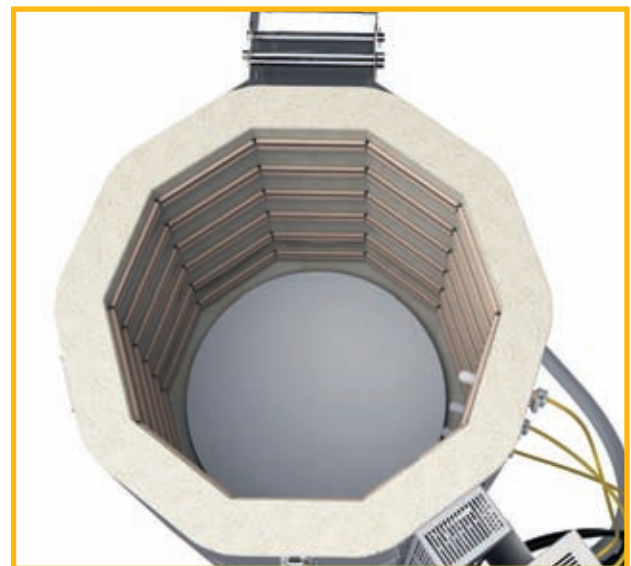
Ship Weight (Kiln, Vent & Furn Kit): 475 LBS



FURNITURE KIT FOR JD230-3

Part Number: H-J-K23X/30

Includes: Two 20" Full Round Shelves and Four 20" Half Round Shelves (3/4" thick), One post kit with 6 each 1/2", 1", 2", 4", 6", and 8" square posts, and one pair heat resistant gloves.



JD236-3

Temperature Rating: Cone 10

Volume: 8.9 Cubic Feet

Brick Thickness: 3" Brick

Inside: 22-3/8" Diam x 36" High

Outside Dimensions: 30" W x 74" H x 43" D

Shipping Dim with Vent & Furn Kit: 48" W x 70" H x 40" D

Ship Weight (Kiln): 445 LBS

Ship Weight (Kiln, Vent & Furn Kit): 550 LBS



FURNITURE KIT FOR JD236-3

Part Number: H-J-K236/30

Includes: Three 20" Full Round Shelves and Four 20" Half Round Shelves (3/4" thick), One post kit with 6 each 1/2", 1", 2", 4", 6", and 8" square posts, and one pair heat resistant gloves.



JD245-3

Temperature Rating: Cone 10

Volume: 11.1 Cubic Feet

Brick Thickness: 3" Brick

Inside: 22-3/8" Diam x 45" High

Outside Dimensions: 30" W x 86" H x 43" D

Shipping Dim with Vent & Furn Kit: 48" W x 85" H x 40" D

Ship Weight (Kiln): 490 LBS

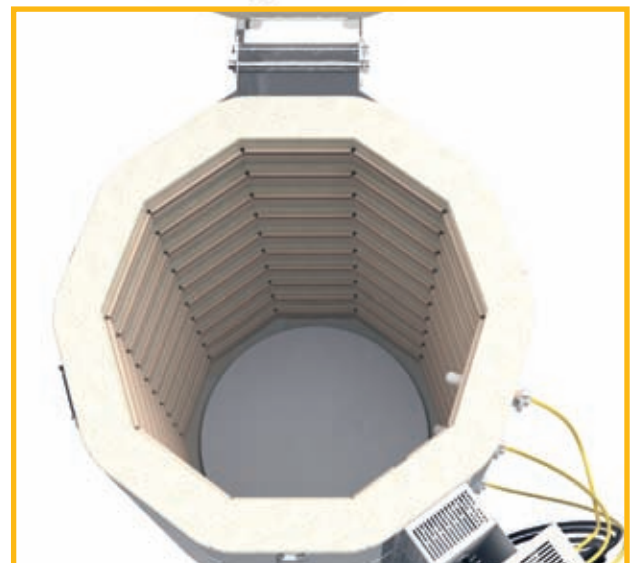
Ship Weight (Kiln, Vent & Furn Kit): 645 LBS



FURNITURE KIT FOR JD245-3

Part Number: H-J-K245/30

Includes: Four 20" Full Round Shelves and Four 20" Half Round Shelves (3/4" thick), One post kit with 6 each 1/2", 1", 2", 4", 6", and 8" square posts, and one pair heat resistant gloves.



Electrical Specifications for JD2900 SERIES

| Standard Models | | | | | | | Powered Bottom Models | | | | | |
|-----------------------|-------------|------------|--------|-------|-----------|-----------|-----------------------|-------------|--------|-------|-----------|-----------|
| Model Number | Part Number | Volt/Phase | Watts | Amps | Wire Size | Fuse Size | Model Number | Part Number | Watts | Amps | Wire Size | Fuse Size |
| JD2918-3-240 | K-A-291D/31 | 240/1P | 9,120 | 38.0 | 6 ga | 50 | JD2918-3-PB-240 | K-A-291B/31 | 12,162 | 50.7 | 4 ga | 70 |
| JD2918-3-240-3P | K-A-291D/32 | 240/3P | 9,120 | 32.9 | 6 ga | 50 | JD2918-3-PB-240-3P | K-A-291B/32 | 12,162 | 32.9 | 6 ga | 50 |
| JD2918-3-208 | K-A-291D/21 | 208/1P | 8,320 | 40.0 | 6 ga | 50 | JD2918-3-PB-208 | K-A-291B/21 | 11,095 | 53.3 | 4 ga | 70 |
| JD2918-3-208-3P | K-A-291D/22 | 208/3P | 8,320 | 34.6 | 6 ga | 50 | JD2918-3-PB-208-3P | K-A-291B/22 | 11,095 | 34.7 | 6 ga | 50 |
| JD2927-3-240 | K-A-292D/31 | 240/1P | 13,680 | 57.0 | 3 ga | 80 | JD2927-3-PB-240 | K-A-292B/31 | 16,720 | 69.7 | 2 ga | 90 |
| JD2927-3-240-3P | K-A-292D/32 | 240/3P | 13,680 | 32.9 | 6 ga | 50 | JD2927-3-PB-240-3P | K-A-292B/32 | 16,720 | 44.3 | 6 ga | 60 |
| JD2927-3-208 | K-A-292D/21 | 208/1P | 12,480 | 60.0 | 3 ga | 80 | JD2927-3-PB-208 | K-A-292B/21 | 15,253 | 73.3 | 1 ga | 100 |
| JD2927-3-208-3P | K-A-292D/22 | 208/3P | 12,480 | 34.6 | 6 ga | 50 | JD2927-3-PB-208-3P | K-A-292B/22 | 15,253 | 46.7 | 6 ga | 60 |
| JD2936-3-240 | K-A-293D/31 | 240/1P | 18,240 | 76.0 | 1 ga | 100 | JD2936-3-PB-240 | K-A-293B/31 | 21,282 | 88.7 | 1/0 | 125 |
| JD2936-3-240-3P | K-A-293D/32 | 240/3P | 18,240 | 50.3 | 4 ga | 70 | JD2936-3-PB-240-3P | K-A-293B/32 | 21,282 | 60.4 | 3 ga | 80 |
| JD2936-3-208 | K-A-293D/21 | 208/1P | 16,640 | 80.0 | 1 ga | 100 | JD2936-3-PB-208 | K-A-293B/21 | 19,415 | 93.3 | 1/0 | 125 |
| JD2936-3-208-3P | K-A-293D/22 | 208/3P | 16,640 | 52.9 | 4 ga | 70 | JD2936-3-PB-208-3P | K-A-293B/22 | 19,415 | 63.6 | 3 ga | 80 |
| JD2945-3-240 | K-A-294D/31 | 240/1P | 22,800 | 95.0 | 1/0 | 125 | JD2945-3-PB-240 | K-A-294B/31 | 25,842 | 107.7 | 3/0 | 150 |
| JD2945-3-240-3P | K-A-294D/32 | 240/3P | 22,800 | 65.8 | 2 ga | 90 | JD2945-3-PB-240-3P | K-A-294B/32 | 25,842 | 65.8 | 2 ga | 90 |
| JD2945-3-208 | K-A-294D/21 | 208/1P | 20,800 | 100.0 | 1/0 | 125 | JD2945-3-PB-208 | K-A-294B/21 | 23,575 | 113.3 | 3/0 | 150 |
| JD2945-3-208-3P | K-A-294D/22 | 208/3P | 20,800 | 69.3 | 2 ga | 90 | JD2945-3-PB-208-3P | K-A-294B/22 | 23,575 | 69.3 | 2 ga | 90 |
| WORLD VOLTAGES | | | | | | | | | | | | |
| JD2918-3-220 | K-A-291D/41 | 220/1P | 8,360 | 38.0 | 6 ga | 50 | JD2918-3-PB-220 | K-A-291B/41 | 11,148 | 50.7 | 4 ga | 70 |
| JD2918-3-380-3PY | K-A-291D/52 | 380/3Y | 8,360 | 19.0 | 12 ga | 25 | JD2918-3-PB-380-3Y | K-A-291B/52 | 11,148 | 19.0 | 12 ga | 25 |
| JD2927-3-220 | K-A-292D/41 | 220/1P | 12,540 | 57.0 | 3 ga | 80 | JD2927-3-PB-220 | K-A-292B/41 | 15,327 | 69.7 | 2 ga | 90 |
| JD2927-3-380-3PY | K-A-292D/52 | 380/3Y | 12,540 | 19.0 | 12 ga | 25 | JD2927-3-PB-380-3Y | K-A-292B/52 | 15,327 | 31.7 | 8 ga | 40 |
| JD2936-3-220 | K-A-293D/41 | 220/1P | 16,720 | 76.0 | 1 ga | 100 | JD2936-3-PB-220 | K-A-293B/41 | 19,508 | 88.7 | 1/0 | 125 |
| JD2936-3-380-3PY | K-A-293D/52 | 380/3Y | 16,720 | 38.0 | 6 ga | 50 | JD2936-3-PB-380-3Y | K-A-293B/52 | 19,508 | 38.0 | 6 ga | 50 |
| JD2945-3-220 | K-A-294D/41 | 220/1P | 20,900 | 95.0 | 1/0 | 125 | JD2945-3-PB-220 | K-A-294B/41 | 23,688 | 107.7 | 3/0 | 150 |
| JD2945-3-380-3PY | K-A-294D/52 | 380/3Y | 20,900 | 38.0 | 6 ga | 50 | JD2945-3-PB-380-3Y | K-A-294B/52 | 23,688 | 38.0 | 6 ga | 50 |

Cone/Temperature Rating: Cone 10, 2350°F, 1290°C (except JD2918-3 is rated for Cone 5, 2165°F, 1185°C)

MET UL499 Listing: All models are c-MET-us listed to UL499 standard.

Power connection: A six foot cord with a 50 amp NEMA 6-50 for single phase units or a 15-50 plug for 3 phase units is included. (No neutral is necessary). World voltage kilns do not include a cord - they are direct wired. All kilns may be direct wired.

Wiring Diagrams: See the **Electrical Tab** for each kiln model to get the wiring diagram for each voltage.

Elements: All elements are of equal resistance value. JD2900 kilns have three elements per kiln section. All Jupiter kilns with the Quad option feature two elements in four rows. Powered Bottom adds two elements.

Other voltages for any country in the world are available. Examples are 200V/3 Phase Delta, 220V/3 Phase Delta, 415V/3 Phase Wye and 400V/3 Phase Wye. CE Listing available in some countries. See 380 Volt diagrams for electrical specifications for 400V/3 Phase Wye and 415V/3 Phase Wye.

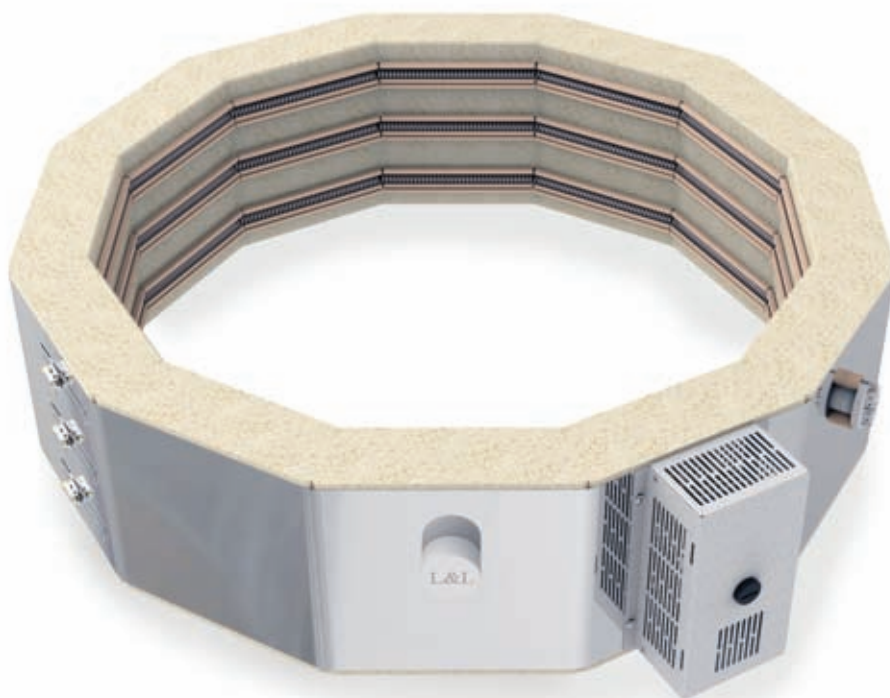
Power Bottoms: Power bottoms are special order only. Electrical specifications are shown above.

Dimension & Weight Specifications for JD2900 SERIES

| Model Number | Inside Height | Cubic Feet | Furniture Kit | Furniture Kit Part No. | Outside Dimensions | Shipping Dimensions (with Kit) | Ship Weight Kiln Only | Ship Weight Kiln + Kit |
|--|---------------|------------|-----------------|------------------------|-----------------------|--|-----------------------|------------------------|
| JD2918-3 | 18" | 6.8 | (6) 25.5" half | H-J-K290/00 | 36" W x 65" H x 49" D | 48" W x 61" H x 40" D | 425 LBS | 535 LBS |
| JD2927-3 | 27" | 10.2 | (8) 25.5" half | H-J-K292/00 | 36" W x 74" H x 49" D | 48" W x 67" H x 40" D | 495 LBS | 630 LBS |
| JD2936-3 | 36" | 13.6 | (10) 25.5" half | H-J-K293/00 | 36" W x 83" H x 49" D | 48" W x 76" H x 40" D | 585 LBS | 750 LBS |
| JD2945-3 | 45" | 17 | (12) 25.5" half | H-J-K294/00 | 36" W x 92" H x 49" D | 48" W x 74" H x 40" D and 48" W x 56" H x 40" D | 670 LBS | 860 LBS |
| METRIC DIMENSIONS (CM, LITERS & KG) | | | | | | | | |
| JD2918-3 | 45.7 | 193 | (6) 64.8 half | H-J-K290/00 | 91 W x 165 H x 124 D | 122 W x 155 H x 102 D | 193 KG | 243 KG |
| JD2927-3 | 68.6 | 289 | (8) 64.8 half | H-J-K292/00 | 91 W x 188 H x 124 D | 122 W x 171 H x 102 D | 225 KG | 286 KG |
| JD2936-3 | 91.4 | 386 | (10) 64.8 half | H-J-K293/00 | 91 W x 211 H x 124 D | 122 W x 194 H x 102 D | 266 KG | 341 KG |
| JD2945-3 | 114.3 | 482 | (12) 64.8 half | H-J-K294/00 | 91 W x 234 H x 124 D | 122 W x 188 H x 102 D and 122 W x 143 H x 102 D | 304 KG | 391 KG |

MORE: See each model page on hotkilns.com to download PDF General Dimension Drawings for more outside and inside dimensions, minimum space requirements, BTU ventilation requirements, and kiln weight. See the Shipping Tab on the model page for complete shipping dimension and shipping weight information.

General Dimension Drawings: See each model page on hotkilns.com to download PDF drawings.



JD2918-3

Temperature Rating: Cone 10

Volume: 6.8 Cubic Feet

Brick Thickness: 3" Brick

Inside: 28" Diam x 18" High

Outside Dimensions: 36" W x 65" H x 49" D

Shipping Dim with Vent & Furn Kit: 48" W x 61" H x 40" D

Ship Weight (Kiln): 425 LBS

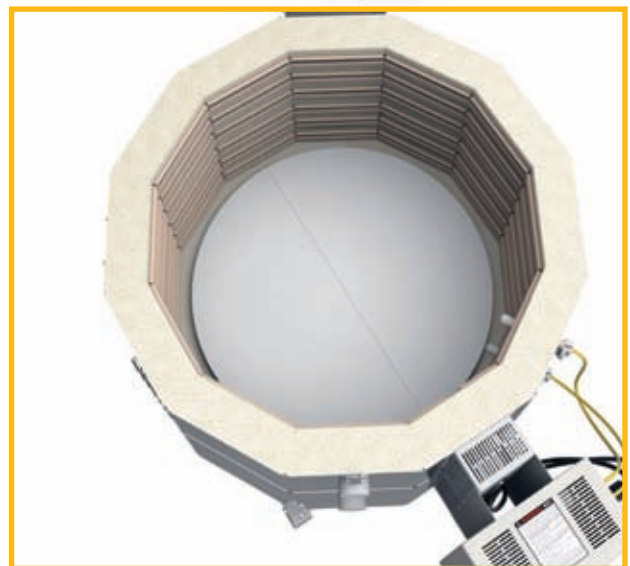
Ship Weight (Kiln, Vent & Furn Kit): 535 LBS



FURNITURE KIT FOR JD2918-3

Part Number: H-J-K290/00

Includes: Six 25.5" (64.8 cm) half shelves, One post kit with 6 each 1/2", 1", 2", 4", 6", and 8" square posts, and one pair heat resistant gloves.



JD2927-3

Temperature Rating: Cone 10

Volume: 10.2 Cubic Feet

Brick Thickness: 3" Brick

Inside: 28" Diam x 27" High

Outside Dimensions: 36" W x 74" H x 49" D

Shipping Dim with Vent & Furn Kit: 48" W x 67" H x 40" D

Ship Weight (Kiln): 435 LBS

Ship Weight (Kiln, Vent & Furn Kit): 630 LBS



FURNITURE KIT FOR JD2927-3

Part Number: H-J-K290/00

Includes: Eight 25.5" (64.8 cm) half shelves, One post kit with 6 each 1/2", 1", 2", 4", 6", and 8" square posts, and one pair heat resistant gloves.



JD2936-3

Temperature Rating: Cone 10

Volume: 13.6 Cubic Feet

Brick Thickness: 3" Brick

Inside: 28" Diam x 36" High

Outside Dimensions: 36" W x 83" H x 49" D

Shipping Dim with Vent & Furn Kit: 48" W x 76" H x 40" D & 36" W x 20" H x 36" D

Ship Weight (Kiln): 585 LBS

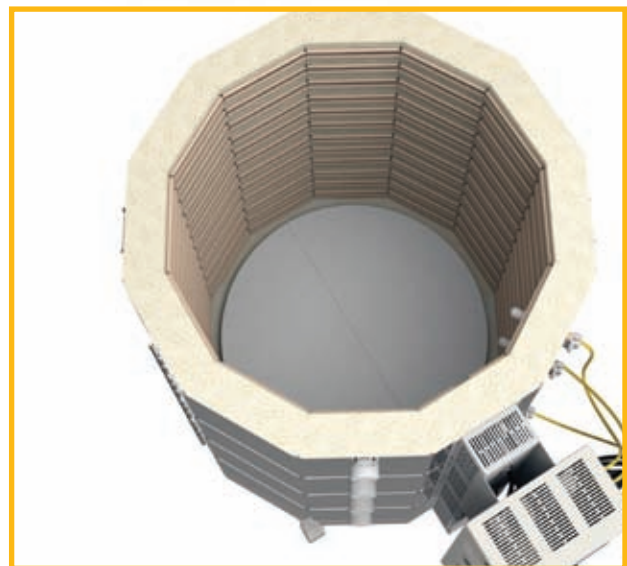
Ship Weight (Kiln, Vent & Furn Kit): 750 LBS



FURNITURE KIT FOR JD2936-3

Part Number: H-J-K290/00

Includes: Ten 25.5" (64.8 cm) half shelves, One post kit with 6 each 1/2", 1", 2", 4", 6", and 8" square posts, and one pair heat resistant gloves.



JD2945-3

Temperature Rating: Cone 10

Volume: 17 Cubic Feet

Brick Thickness: 3" Brick

Inside: 28" Diam x 45" High

Outside Dimensions: 36" W x 92" H x 49" D

Shipping Dim with Vent & Furn Kit: 48" W x 85" H x 40" D &
48" W x 38" H x 44" D

Ship Weight (Kiln): 670 LBS

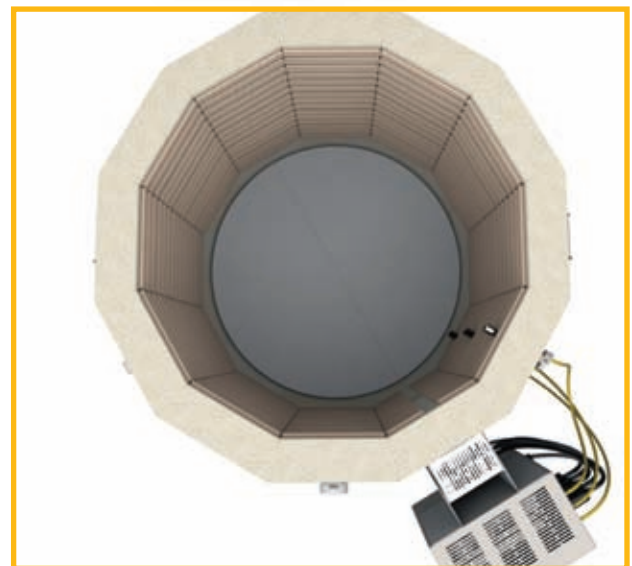
Ship Weight (Kiln, Vent & Furn Kit): 860 LBS



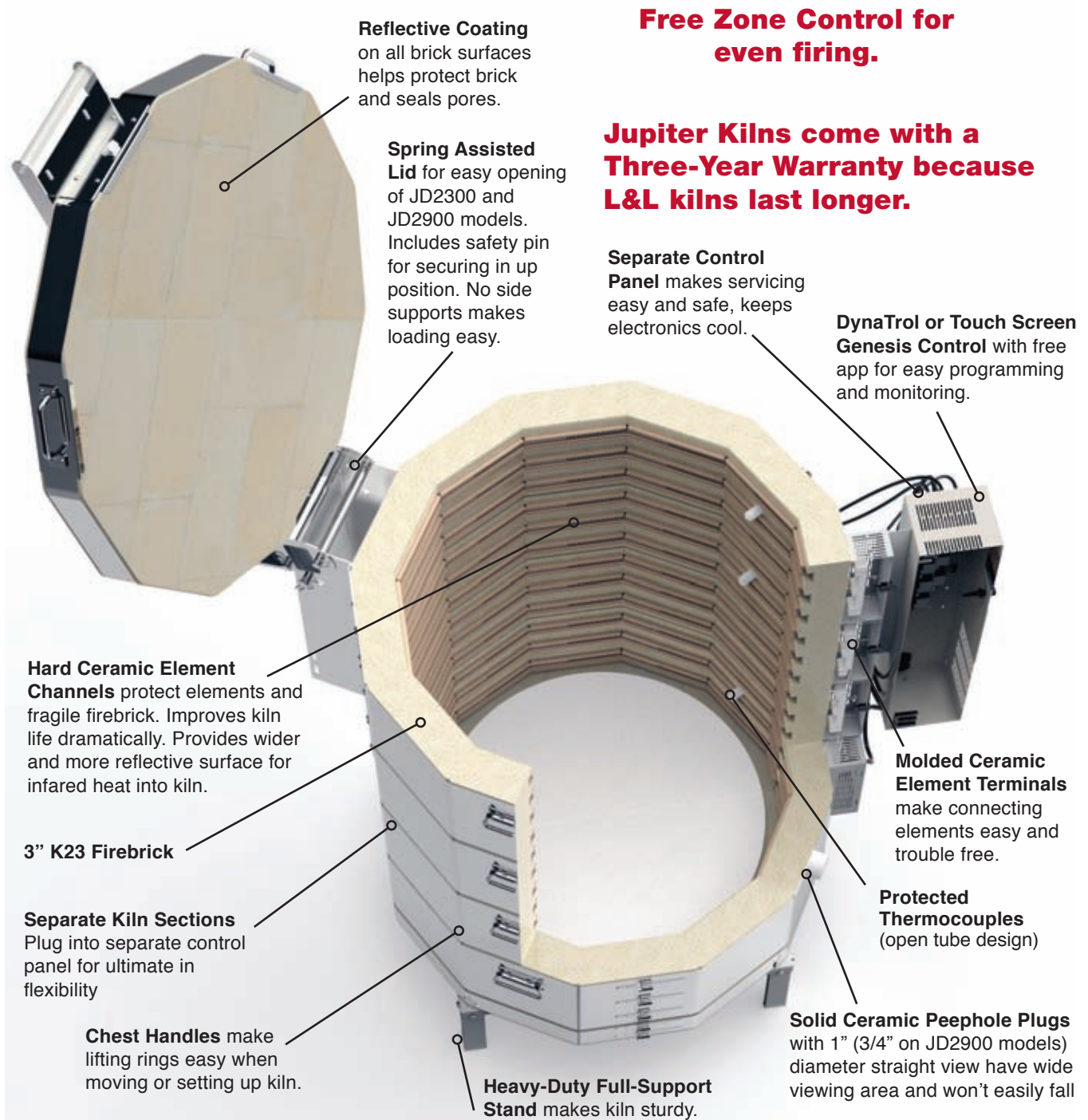
FURNITURE KIT FOR JD2945-3

Part Number: H-J-K294/00

Includes: Twelve 25.5" (64.8 cm) half shelves, One post kit with 6 each 1/2", 1", 2", 4", 6", and 8" square posts, and one pair heat resistant gloves.



What Makes Jupiter Kilns Built to Last?



505 Sharptown Road • Swedesboro, NJ 08085
Phone: 856.294.0077 • Fax: 856.294.0070
sales@hotkilns.com • hotkilns.com

KILNS BUILT TO LAST

Bulletin No: JD-0821