

Easy-Fire **Top-Loading Kilns**

The Best Kiln Made for Performance and Durability.

- **Hard Ceramic Element Holders** protect brick and make element changes fast and easy
- **Dynamic Zone Control** keeps temperatures uniform throughout kiln
- **Drop-Down Piggy-Back Panel** protects electronics and makes servicing easy
- **Protected Thermocouples**
- **Spring-Assist Hinge** on larger models does not need side support bars - makes loading easy from all sides
- **Super-Strong Aluminized Steel Stand** securely supports vent system
- **For Potters, Teachers, Institutions, Camps, Hobbyists, and Industry** - anyone who needs a carefully engineered kiln that will last longer and save money in maintenance costs
- **Customize to meet your exact needs.**
Every kiln is built to order



505 Sharptown Road • Swedesboro, NJ 08085
Phone: 856.294.0077 • Fax: 856.294.0070
sales@hotkilns.com • hotkilns.com

KILNS BUILT TO LAST

Bulletin No: EZ-0121

Unique L&L Features with Lasting Benefits

CONE 10 TEMPERATURE RATING

Cone 10, 2350°F, 1290°C (Except for single phase e28T-3 models - see specification pages for details).

CHOICE OF INSULATION

Choice of 2.5" or 3" K23 firebrick. (3" only on e28 Series). (3" brick recommended for high fire applications (over cone 1 - 2000F). (See hotkilns.com/choosing-insulation)

PATENTED CERAMIC ELEMENT HOLDERS

Protect brick from loading damage, keep elements from falling out of grooves, make changing elements easy, and optimize heat transfer to load. Kiln lasts longer! No pins. (hotkilns.com/ceramic-holders)



BRICK COATING FOR DURABILITY

Proprietary reflective brick coating. This helps firebrick stay strong on the surface, helps prevent dusting on your work, and keeps the kiln clean inside. (hotkilns.com/reflective-coating)

HEAVY-DUTY LARGE ELEMENTS

Heavy-duty. 2 elements per 9" section. 1 element on 4.5" high section. *Quad elements, which double the element wire, are optional on all models. See Page 6.*

EXTRA CASE CLAMPS

Stainless worm gear case clamps keep case together and allow for adjustment over time. Three per 9" section, Two per 4.5" section and two on the top and bottom. (hotkilns.com/case-clamps)

"EASY-OPEN, EASY-LOAD" SPRING-LOADED LID OPENS WIDE FOR LOADING

On e23 and e28 models the whole kiln supports the lid (not just one section). Our positive safety pin secures the lid safely. No side support bars get in the way of loading when the lid is fully tilted back. (hotkilns.com/spring-hinge)



Note the backward angle with no side support bars for easy unobstructed loading.

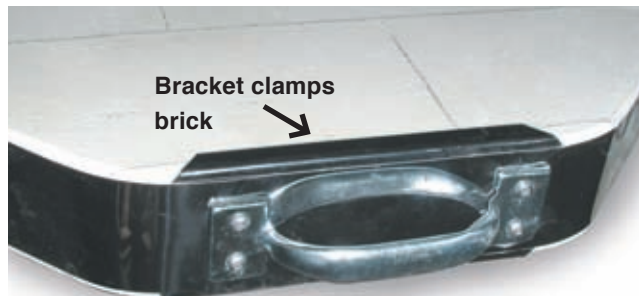
STAINLESS STEEL HINGE ON E18 MODELS

Chains secure the lid in place when open. (hotkilns.com/simple-hinge)



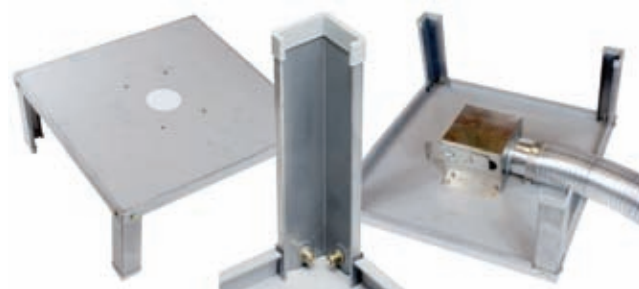
LID BRICK IS SECURED WITH CLIPS

Stainless Steel clips secure lids - not friction.
(hotkilns.com/lid-clips)



HEAVY-DUTY FULL-SUPPORT STAND

Heavy-duty 14 gauge solid stand with multiple bends for strength. Bolt on legs. Feet protectors included. Optional Vent Bypass Collection Box bolts onto bottom of stand with included studs. *Rolling stand is optional. See page 6.*
(hotkilns.com/full-stand)



EASY ASSEMBLY WITH SECTIONAL CONSTRUCTION

Two 9" sections for the S models, two 9" and one 4.5" middle section for the M models, and three 9" sections for the T models. Sections stack on top of each other. Easy to assemble or disassemble for moving. Bottom is reversible.
(hotkilns.com/sectional-easy-fire)

CORROSION RESISTANT CONSTRUCTION

Stainless steel wrapped around brick. All stainless screws on case. Stand is galvanized. Vent parts are stainless steel or aluminum. Hinge is stainless steel. Control box is powder coated steel. (hotkilns.com/case)

SOLID PEEPHOLE PLUGS



Solid (non-fragile) ceramic plug with heat-locked mushroom head. 1" diameter full-view non-tapered.
(hotkilns.com/peephole-plugs)

EASY MULTI-PROGRAM DYNATROL

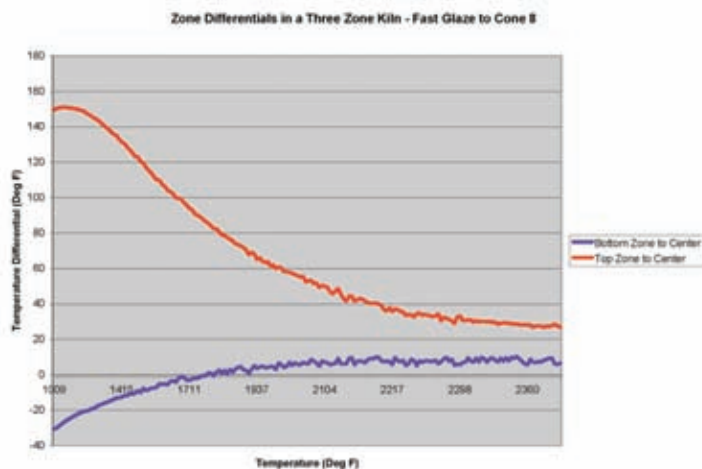


The time-tested DynaTrol with 4 Easy-Fire programs, 6 Vary-Fire programs, PreHeat, Delay, Program & Segment Review, and Diagnostics. Control is mounted on an angled panel for easy viewing. *Optional Genesis*

control (see page 8) features touch screen and free Wifi App for monitoring kiln. (hotkilns.com/dynatrol)

DYNAMIC ZONE CONTROL

This is a **standard** feature with either a DynaTrol or touch-screen Genesis control. The control separately measures temperatures in the bottom, middle, and top of the kiln and automatically adjusts the heat of two or three zones during the firing.

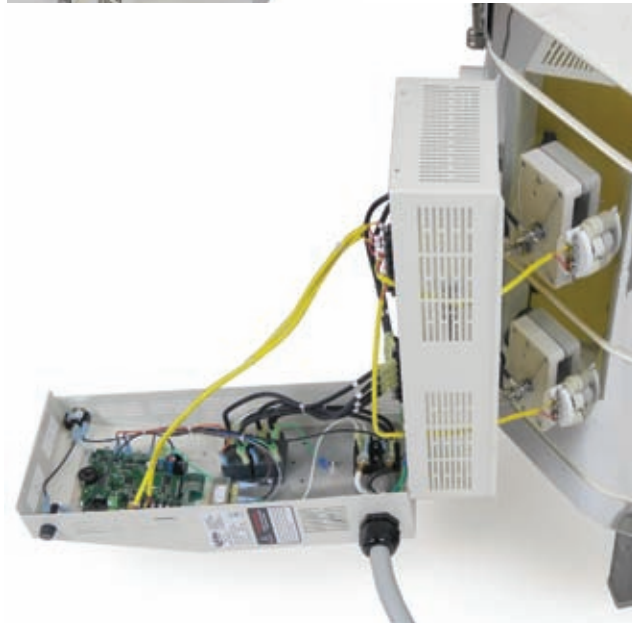


Kiln temperatures are automatically equalized to within 1/2 cone or better. Zone control automatically compensates for many loading issues and element resistance changes. Additionally, L&L kilns are fundamentally uniform because the element holders radiate the heat more evenly. (hotkilns.com/zone-control)

SEPARATED COOL-FIRING CONTROL PANEL



All controls and components are mounted in a separate control panel that is piggy-backed to the element connection box. In addition a layer of insulation keeps the controls cool - which is critical for long term health of the electronics.



The control panel and element box are hinged for easy access and maintenance. The control box can be easily removed for servicing. On/off switch and control fuse are included. (hotkilns.com/easy-fire-panel)

MERCURY FREE RELAYS

Mercury free relays are standard. *See Page 9 for optional electronic SSRs for extra long element life and quiet operation.*

CERAMIC ELEMENT CONNECTIONS

Proprietary all-ceramic element connection block makes changing elements easy. (hotkilns.com/ceramic-terminal)



HEAVY-GAUGE TYPE K THERMOCOUPLES

Type K 8 gauge thermocouple is protected by a open ceramic protection tube. This allows the thermocouple to accurately read the kiln temperature but protects the delicate tip of the thermocouple from damage while loading. Also any metallic flakes from the thermocouple will tend to drop inside the tube where they can be vacuumed out during normal maintenance. (hotkilns.com/protected-thermocouples)



POWER CORD & PLUG INCLUDED



50 Amp NEMA 6-50 six foot cord included for one phase.

50 Amp NEMA 15-50 six foot cord included for three phase. (All Non-USA kilns are direct wired).

Same price for all voltages and phases.

COMPLETE VISUAL INSTRUCTIONS

No one has a better or more complete instruction manual. Our visual instructions address the needs of the artist, the installer, and the repair person. You get a fully illustrated operation and service manual. Many instructional videos are available. (hotkilns.com/support/videos)

L&L KILNS ARE EASY TO TROUBLESHOOT

Open up any L&L kiln control panel and see how easy it is to check amps, element resistance, and voltage. No other kiln can be serviced as quickly, easily, or inexpensively as an L&L kiln.

THREE-YEAR LIMITED WARRANTY

See hotkilns.com/warranty. Email, web and phone support.

IN-DEPTH SUPPORT

One customer said: "I am truly impressed with your website, it is more than informative and your products are well designed. The fact that all the information, including repair manuals, are listed, speaks well of your dedication to customer service." Our website has thousands of pages of technical help - all easily searchable - plus we provide expert support with phone and email.

SUSTAINABLE MANUFACTURING

We use solar energy as our primary energy source.

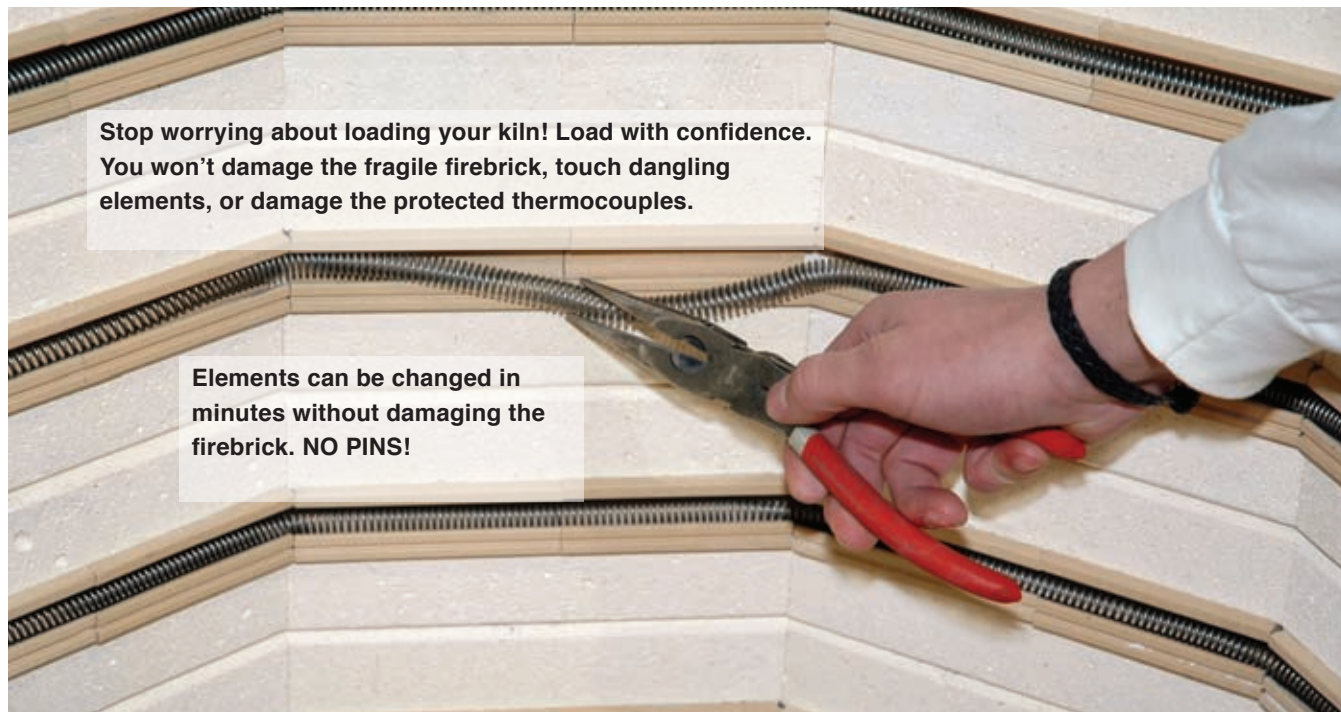
SUPERIOR PACKAGING

Kilns are securely packed with tubes of foam molded to the kiln. Kilns are shipped in skidded cartons.

MET UL499 LISTING



c-MET-us listed to UL499 standards assures highest safety standards. (hotkilns.com/met)



Optional Kiln Furniture, Rolling Stands, & Quad & APM Element Options

CONE 11 FURNITURE KITS



Shelves are high alumina cone 11 shelves. Each post kit includes six each 1/2", 1", 2", 4", 6" and 8" high 1.5" square cordierite posts. All furniture kits include one pair heat-resistant gloves.

(hotkilns.com/kiln-furniture)

QUAD ELEMENT DESIGN

The combination of 1/2" diameter element coils, the doubled surface area of the Quad element design, and superior heat transfer of L&L's patented ceramic element holders, make this the best element system in the world today. (hotkilns.com/quad-option)



APM ELEMENTS

Special sintered alloy provides the ultimate in element life. The special sintered alloy inhibits grain growth and resistance change in the elements. (hotkilns.com/apm)

ROLLING STAND WITH LOCKING CASTERS

Allows kiln to be moved out of the way while not firing. L&L's rolling kiln stand features heavy gauge (14 ga) galvanized steel construction with multiple bends for extra strength, steel swivel locking casters, integrated vent collection box support, and guide rails for the kiln. (hotkilns.com/rolling-stands)



SEISMIC BRACE

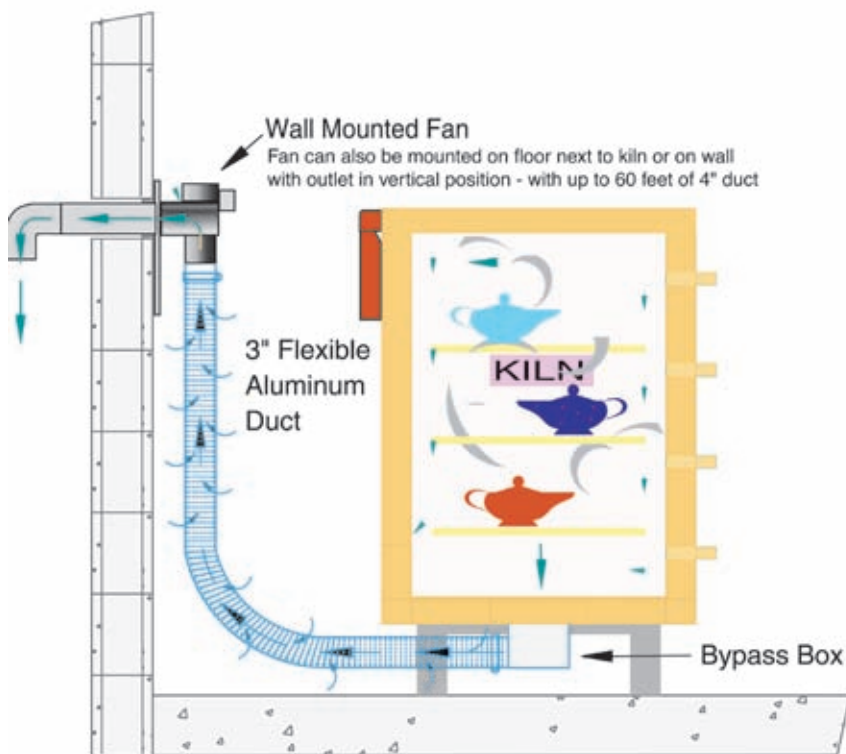
This special stand is designed to prevent a top-loading sectional kiln from falling over during an earthquake. (hotkilns.com/seismic-brace)



Ventilation Options & Accessories

DOWNDRAFT VENT SYSTEM

Vent-Sure downdraft vent vents fumes from kiln out of room and away from kiln. (hotkilns.com/vent)



VENT-SURE FEATURES

- Downdraft venting pulls air down to bottom of kiln
- Improves temperature uniformity inside the kiln
- Powerful 130 CFM fan motor, typically mounted on wall, allows fumes to be under vacuum in your studio
- The strong fan motor helps overcome static pressure in long exhaust lines. The duct may be up to 60 feet in length, and include up to four 90° bends
- 120 volts with on/off switch on cord (240 volts available)
- 15 foot long flexible aluminum duct
- Bypass collection box mounted on kiln allows adjustment of venting.
- Fan motor, mounted away from the kiln, stays cool and no vibration is transmitted to the kiln
- The included Multi-Mounting Bracket allows you to mount the vent on the floor or, alternately, to mount the vent on a wall so that the output of the vent is pointing up.
- Three-year Limited Warranty
- c-MET-us Listed to UL499 standards for use on c-MET-us L&L Kilns



VENT CONTROL

Allows vent to be controlled with an event switch in the DynaTrol or Genesis. (For use with one kiln.) (hotkilns.com/vent-control)



VENT DOUBLER

This accessory allows you to connect two kilns to a Vent-Sure vent system. It can be added to an existing vent system or can be ordered with a new vent. In some cases you may be able to fire two kilns at once. The Vent-Sure has enough force to vent at least 25 cubic feet of kiln. That means, for instance, that two e28T-3 kilns could be vented while firing at the same time. (hotkilns.com/doubler)



Genesis Touch Screen Control with App

GENESIS TOUCH SCREEN CONTROL

The Genesis control includes a touch screen interface and WIFI connectivity added to the proven software of the DynaTrol. More programming options and memory. Free App available to monitor kiln via WiFi. (hotkilns.com/genesis)



GENESIS FEATURES

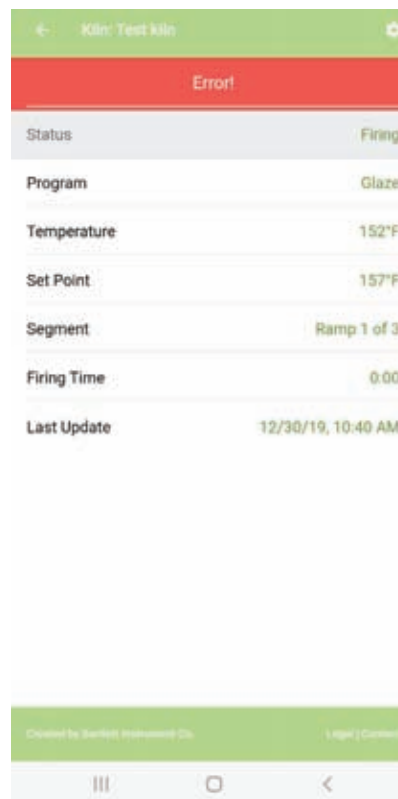
- Touch-screen intuitive technology for easy user interface.
- Easy-to-follow screen descriptions.
- Different user-interface levels, which can be set to match the user's firing knowledge.
- Graphical display of the firing process right at the controller. This means you can graph the firing in real time and compare the program with actual results.
- Glass programs included.
- Store up to 30 custom user programs.
- Up to 32 segments per program.
- Ability to make adjustments during a firing such as add segments, add temperature, and skip segments.
- Built in diagnostics testing
- Alarm
- Error Codes
- WiFi enabled for easy software updating.
- Included Phone App allows you to monitor kiln operation remotely (with no subscription fee).



The Genesis control fits right into the control box to replace the DynaTrol. That means you can upgrade anytime!



See a graph of your firing before you fire, while you fire and after you fire.



This shows the view you get on your phone with the Kiln Aid Phone app. Simply download the Kiln Aid phone app from your Google Play Store or Apple App Store, add your kiln, and begin monitoring as your kiln progresses through a firing. See temperatures, where you are in a program cycle, what program you are firing and error notifications.

More Control & Power Options

TYPE S THERMOCOUPLES

The best thermocouple for constant high fire applications. No thermocouple drift. Priced per thermocouple. Note that kilns with four or more sections still only have a three zone control.

(hotkilns.com/type-s)

PYROCIL SHEATHED THERMOCOUPLES

For greater sensitivity to temperature change. Use below 2200°F for sensitivity (glass is a good example). Priced per thermocouple. These are useful for sensitive industrial applications.

(hotkilns.com/pyrocil-tc)

KISS SOFTWARE

Kiss (kiln interface software system) connects up to 50 DynaTrol controllers to a personal computer running Windows. Monitor and control kiln remotely. For the DynaTrol only. (hotkilns.com/kiss)

SOLID STATE RELAYS

Industrial Grade Solid State Relays are quiet and result in longer element life because the switching



time is so fast the elements don't expand and contract as much. The whole system includes extra large heat sinks, special fast acting fuses, cooling fan and extra safety relays. c-MET-us listed option. (hotkilns.com/ssr)

e23T shown with the special control panel that houses the SSRs and/or High Limit Control

OPTIONAL CORDS

Single Phase e18S and e18S-3 models can have a 12 foot 30 amp cord in various types. All other single phase models can get a 12 foot NEMA 6-50 cord.

(hotkilns.com/cord-options)

HIGH LIMIT BACK UP CONTROL

Bartlett High Limit Control with latching relay acts as a back up to the main control. If the main control fails for any reason then this acts as a "back stop" and shuts the kiln down.

(hotkilns.com/high-limit)

BACK UP CONTACTORS

Actuated by the High Limit Back Up Digital Control, back up contactors are completely redundant power contactors so that if one or more contactors fail in a closed position, then the kiln still cannot climb above the High Limit set point. (hotkilns.com/high-limit)

120 VOLT POWER SUPPLY

If there are problems with short power outages, voltage spikes, voltage drops, or excessive environmental line noise, this can cause unpredictable behavior in the electronic control. With this option the control is powered by a separate 120 volt line (with a standard 6 foot long cord) and that voltage is filtered through an EMI (Electrical Magnetic Interference) noise filter. (hotkilns.com/noise)

THE POSITIVE DOOR INTERLOCK SWITCH

Features a strong mechanical latch that must be turned before the door can be opened. The turning of this latch breaks all power to the kiln as if you had used an external power disconnect switch or pulled the power cord from its socket.

(hotkilns.com/door-interlock)



e14S-3

Temperature Rating: Cone 10

Volume: 1.5 Cubic Feet

Brick Thickness: 3" Brick

Inside: 13.5" Diam x 18" High

Outside Dimensions: 23" W x 27" D x 51" H

Shipping Dim with Vent & Furn Kit: 36" W x 51" H x 36" D

Ship Weight (Kiln): 200 LBS

Ship Weight (Kiln, Vent & Furn Kit): 235 LBS

**New
Model**



FURNITURE KIT FOR e14S-3

Part Number: H-E-K18S/00

Includes: Three 12" Full Round Shelves (1/2" thick), One small post kit with 4 each 1/2", 1", 2", 4", and 6" square posts, and one pair heat resistant gloves.



Electrical Specifications for e14S & e18 SERIES

Model Numbers	Part Number for 2.5" Brick	Part Number for 3" Brick	Volt/ Phase	Watts	Amps	Wire Size	Fuse Size	Power Connection
e14S-3-240	none	K-E-14S3/31	240/1P	3,840	16	14 ga	20 Amps	5-20 Cordset
e14S-3-240	none	K-E-14S3/21	208/1P	3,840	18.5	12 ga	25 Amps	14-30 Cordset
e18S-240 / e18S-3-240	K-E-18SX/31	K-E-18S3/31	240/1P	5,740	23.9	10 ga	30 Amps	6-50 Cordset
e18S-240-3P / e18S-3-240-3P	K-E-18SX/32	K-E-18S3/32	240/3P	5,740	20.7	10 ga	30 Amps	15-50 Cordset
e18S-208 / e18S-3-208	K-E-18SX/21	K-E-18S3/21	208/1P	4,980	23.9	10 ga	30 Amps	6-50 Cordset
e18S-208-3P / e18S-3-208-3P	K-E-18SX/22	K-E-18S3/22	208/3P	4,980	20.7	10 ga	30 Amps	15-50 Cordset
e18M-240 / e18M-3-240	K-E-18MX/31	K-E-18M3/31	240/1P	8,000	33.3	6 ga	50 Amp	6-50 Cordset
e18M-240-3P / e18M-3-240-3P	K-E-18MX/32	K-E-18M3/32	240/3P	8,000	23.1	10ga	30 Amp	15-50 Cordset
e18M-208 / e18M-3-208	K-E-18MX/21	K-E-18M3/21	208/1P	8,000	38.5	6 ga	50 Amp	6-50 Cordset
e18M-208-3P / e18M-3-208-3P	K-E-18MX/22	K-E-18M3/22	208/3P	8,000	26.6	8 ga	40 Amp	15-50 Cordset
e18T-240 / e18T-3-240	K-E-18TX/31	K-E-18T3/31	240/1P	8,400	35.0	6 ga	50 Amps	6-50 Cordset
e18T-240-3P / e18T-3-240-3P	K-E-18TX/32	K-E-18T3/32	240/3P	8,400	20.2	10 ga	30 Amps	15-50 Cordset
e18T-208 / e18T-3-208	K-E-18TX/21	K-E-18T3/21	208/1P	8,400	40.4	6 ga	60 Amps	6-50 Cordset
e18T-208-3P / e18T-3-208-3P	K-E-18TX/22	K-E-18T3/22	208/3P	8,400	23.3	10 ga	30 Amps	15-50 Cordset
WORLD VOLTAGES								
e18S-220 / e18S-3-220	K-E-18SX/41	K-E-18S3/41	220/1P	5,268	23.9	10 ga	30 Amp	Direct Wire
e18S-380-3P / e18S-3-380-3PY	K-E-18SX/52	K-E-18S3/52	380/3PY	5,268	12.0	14 ga	15 Amp	Direct Wire
e18M-220 / e18M-3-220	K-E-18MX/41	K-E-18M3/41	220/1P	8,000	36.4	6 ga	50 Amp	Direct Wire
e18M-380-3P / e18M-3-380-3PY	K-E-18MX/52	K-E-18M3/52	380/3PY	8,000	14.5	14 ga	20 Amp	Direct Wire
e18T-220 / e18T-3-220	K-E-18TX/41	K-E-18T3/41	220/1P	8,400	38.2	6 ga	50 Amp	Direct Wire
e18T-380-3P / e18T-3-380-3PY	K-E-18TX/52	K-E-18T3/52	380/3PY	8,400	12.7	14 ga	20 Amp	Direct Wire

MET UL499 Listing: All models are c-MET-us listed to UL499 standard.

Cone Rating: All e14S and e18 models are rated to Cone 10.

Wiring Diagrams: See the **Electrical Tab** for each kiln model to get the wiring diagram for each voltage.

Power connection: A six foot cord with a 50 amp NEMA 6-50 for single phase units or a 15-50 plug for 3 phase units is included. (No neutral is necessary). World voltage kilns do not include a cord - they are direct wired. All kilns may be direct wired. Exception: The e14S-3 240 volt kiln has a 5-20 Cordset and the 208 volt version has a 14-30 Cordset.

Elements: All elements are of equal resistance value. S models have four elements. M models have five elements. T models have six elements. Quad elements are the same resistance but longer and thicker.

Other voltages for any country in the world are available. Examples are 200V/3 Phase Delta, 220V/3 Phase Delta, 415V/3 Phase Wye and 400V/3 Phase Wye. CE Listing available in some countries. See 380 Volt diagrams for electrical specifications for 400V/3 Phase Wye and 415V/3 Phase Wye.

Moving and installation: The kiln comes assembled but can be quickly disassembled and reassembled to move through any door or up stairs. It comes packed in a skidded carton with secure foam-in-place packaging.

Shipping Dimensions: See website for shipping dimensions with various combinations of options.

Dimension & Weight Specifications for e18 SERIES

Model Number	Inside Dimensions	Cubic Feet	Brick Thick	Furniture Kit	Furn Kit Part No.	Outside Dimensions	Shipping Dimensions (w Kit and Vent)	Ship Weight Kiln Only	Ship Wght Kiln/Kit/ Vent
e18S	17.5"D x 18"H	2.6	2.5"	(1) 15.5" full, (4) half	H-E-K18S/00	28" W x 55" H x 30" D	48" W x 51" H x 40" D	215 LBS	265 LBS
e18S-3	16.5"D x 18"H	2.5	3"	(1) 15" full, (4) half	H-E-K18S/30	28" W x 55" H x 30" D	48" W x 52" H x 40" D	235 LBS	285 LBS
e18M	17.5"D x 22.5"H	3.3	2.5"	(1) 15.5" full, (4) half	H-E-K18S/00	28" W x 60" H x 30" D	48" W x 56" H x 40" D	235 LBS	285 LBS
e18M-3	16.5"D x 22.5"H	3.2	3"	(1) 15" full, (4) half	H-E-K18S/30	28" W x 60" H x 30" D	48" W x 57" H x 40" D	260 LBS	310 LBS
e18T	17.5"D x 27"H	3.9	2.5"	(2) 15.5" full, (4) half	H-E-K18T/00	28" W x 63" H x 30" D	48" W x 60" H x 40" D	255 LBS	315 LBS
e18T-3	16.5"D x 27"H	3.7	3"	(2) 15" full, (4) half	H-E-K18T/30	28" W x 63" H x 30" D	48" W x 61" H x 40" D	280 LBS	340 LBS
METRIC DIMENSIONS (CM, LITERS & KG)									
e18S	44.5 D x 45.7 H	74	6.35	(1) 39.4 full, (4) half	H-E-K18S/00	71 W x 140 H x 76 D	122 W x 130 H x 102 D	98 KG	121 KG
e18S-3	41.9 D x 45.7 H	71	7.62	(1) 38.1 full, (4) half	H-E-K18S/30	71 W x 140 H x 76 D	122 W x 133 H x 102 D	107 KG	130 KG
e18M	44.5 D x 57.2 H	94	6.35	(1) 39.4 full, (4) half	H-E-K18S/00	71 W x 152 H x 76 D	122 W x 143 H x 102 D	107 KG	130 KG
e18M-3	41.9 D x 57.2 H	91	7.62	(1) 38.1 full, (4) half	H-E-K18S/30	71 W x 152 H x 76 D	122 W x 145 H x 102 D	118 KG	141 KG
e18T	44.5 D x 68.6 H	111	6.35	(2) 39.4 full, (4) half	H-E-K18T/00	71 W x 160 H x 76 D	122 W x 153 H x 102 D	116 KG	143 KG
e18T-3	41.9 D x 68.6 H	105	7.62	(2) 38.1 full, (4) half	H-E-K18T/30	71 W x 160 H x 76 D	122 W x 155 H x 102 D	128 KG	155 KG

MORE: See each model page on hotkilns.com to download PDF General Dimension Drawings for more outside and inside dimensions, minimum space requirements, BTU ventilation requirements, and kiln weight. See the Shipping Tab on the model page for complete shipping dimension and shipping weight information.



e18S-3



e18M-3



e18T-3

e18S

Temperature Rating: Cone 10

Volume: 2.6 Cubic Feet

Brick Thickness: 2.5" Brick

Inside: 17.5" Diam x 18" High

Outside Dimensions: 28" W x 55" H x 30" D

Shipping Dim with Vent & Furn Kit: 48" W x 51" H x 40" D

Ship Weight (Kiln): 215 LBS

Ship Weight (Kiln, Vent & Furn Kit): 265 LBS



FURNITURE KIT FOR e18S

Part Number: H-E-K18S/00

Includes: One 15.5" (39.4 cm) full shelf and four half shelves, One small post kit with 4 each 1/2", 1", 2", 4", and 6" square posts, and one pair heat resistant gloves.



e18S-3

Temperature Rating: Cone 10

Volume: 2.5 Cubic Feet

Brick Thickness: 3" Brick

Inside: 16.5" Diam x 18" High

Outside Dimensions: 28" W x 55" H x 30" D

Shipping Dim with Vent & Furn Kit: 48" W x 52" H x 40" D

Ship Weight (Kiln): 235 LBS

Ship Weight (Kiln, Vent & Furn Kit): 285 LBS

FURNITURE KIT FOR e18S-3

Part Number: H-E-K18S/30

Includes: One 15" (38.1 cm) full shelf and four half shelves, One small post kit with 4 each 1/2", 1", 2", 4", and 6" square posts, and one pair heat resistant gloves.



e18M

Temperature Rating: Cone 10

Volume: 3.3 Cubic Feet

Brick Thickness: 2.5" Brick

Inside: 17.5" Diam x 22.5" High

Outside Dimensions: 28" W x 60" H x 30" D

Shipping Dim with Vent & Furn Kit: 48" W x 56" H x 40" D

Ship Weight (Kiln): 235 LBS

Ship Weight (Kiln, Vent & Furn Kit): 285 LBS

**New
Model**

FURNITURE KIT FOR e18M

Part Number: H-E-K18S/00

Includes: One 15.5" (39.4 cm) full shelf and four half shelves, One small post kit with 4 each 1/2", 1", 2", 4", and 6" square posts, and one pair heat resistant gloves.



e18M-3

Temperature Rating: Cone 10

Volume: 3.2 Cubic Feet

Brick Thickness: 3" Brick

Inside: 16.5" Diam x 18" High

Outside Dimensions: 28" W x 60" H x 30" D

Shipping Dim with Vent & Furn Kit: 48" W x 57" H x 40" D

Ship Weight (Kiln): 260 LBS

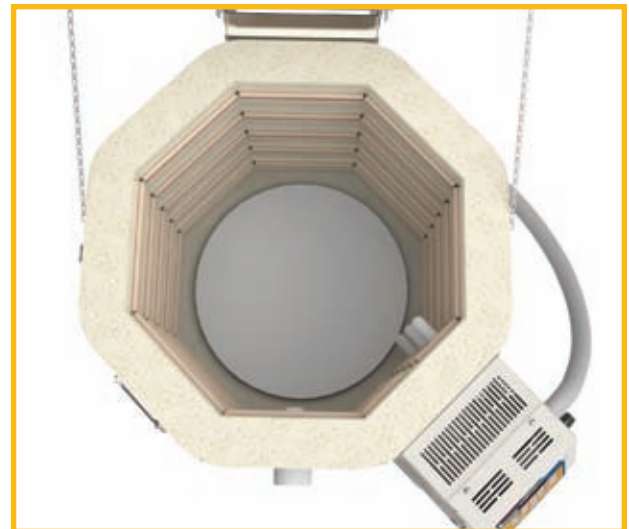
Ship Weight (Kiln, Vent & Furn Kit): 310 LBS

**New
Model**

FURNITURE KIT FOR e18M-3

Part Number: H-E-K18S/30

Includes: One 15" (38.1 cm) full shelf and four half shelves, One small post kit with 4 each 1/2", 1", 2", 4", and 6" square posts, and one pair heat resistant gloves.



e18T

Temperature Rating: Cone 10

Volume: 3.9 Cubic Feet

Brick Thickness: 2.5" Brick

Inside: 17.5" Diam x 27" High

Outside Dimensions: 28" W x 63" H x 30" D

Shipping Dim with Vent & Furn Kit: 48" W x 60" H x 40" D

Ship Weight (Kiln): 255 LBS

Ship Weight (Kiln, Vent & Furn Kit): 315 LBS



FURNITURE KIT FOR e18T

Part Number: H-E-K18T/00

Includes: Two 15.5" (39.4 cm) full shelf and four half shelves, One post kit with 6 each 1/2", 1", 2", 4", 6", and 8" square posts, and one pair heat resistant gloves.



e18T-3

Temperature Rating: Cone 10

Volume: 3.7 Cubic Feet

Brick Thickness: 3" Brick

Inside: 16.5" Diam x 27" High

Outside Dimensions: 28" W x 63" H x 30" D

Shipping Dim with Vent & Furn Kit: 48" W x 61" H x 40" D

Ship Weight (Kiln): 280 LBS

Ship Weight (Kiln, Vent & Furn Kit): 340 LBS



FURNITURE KIT FOR e18T-3

Part Number: H-E-K18T/30

Includes: Two 15" (38.1 cm) full shelf and four half shelves, One post kit with 6 each 1/2", 1", 2", 4", 6", and 8" square posts, and one pair heat resistant gloves.



Dimension & Weight Specifications for e23 SERIES

Model Number	Inside Dimensions	Cubic Feet	Brick Thick	Furniture Kit	Furn Kit Part No.	Outside Dimensions	Shipping Dimensions (w Kit and Vent)	Ship Weight Kiln Only	Ship Wght Kiln/Kit/Vent
e23S	23-3/8"D x 18"H	4.7	2-1/2"	(1) 21" full, (4) half	H-E-K23S/00	30" W x 59" H x 40" D	48" W x 51" H x 40" D	305 LBS	385 LBS
e23S-3	22-3/8"D x 18"H	4.4	3"	(1) 20" full, (4) half	H-E-K23S/30	30" W x 59" H x 40" D	48" W x 52" H x 40" D	320 LBS	395 LBS
e23M	23-3/8"D x 23"H	5.9	2-1/2"	(1) 21" full, (4) half	H-E-K23S/00	30" W x 63" H x 40" D	48" W x 56" H x 40" D	335 LBS	415 LBS
e23M-3	22-3/8"D x 23"H	5.5	3"	(1) 20" full, (4) half	H-E-K23S/30	30" W x 63" H x 40" D	48" W x 57" H x 40" D	350 LBS	425 LBS
e23T	23-3/8"D x 27"H	7.0	2-1/2"	(2) 21" full, (4) half	H-E-K23T/00	30" W x 68" H x 40" D	48" W x 60" H x 40" D	360 LBS	460 LBS
e23T-3	22-3/8"D x 27"H	6.7	3"	(2) 20" full, (4) half	H-E-K23T/30	30" W x 68" H x 40" D	48" W x 61" H x 40" D	380 LBS	470 LBS
METRIC DIMENSIONS (CM, LITERS & KG)									
e23S	59.2 D x 45.7 H	134	6.35	(1) 53.3 full, (4) half	H-E-K23S/00	76 W x 150 H x 102 D	122 W x 130 H x 102 D	139 KG	175 KG
e23S-3	56.6 D x 45.7 H	125	7.62	(1) 50.8 full, (4) half	H-E-K23S/30	76 W x 150 H x 102 D	122 W x 133 H x 102 D	145 KG	180 KG
e23M	59.2 D x 57.2 H	168	6.35	(1) 53.3 full, (4) half	H-E-K23S/00	76 W x 160 H x 102 D	122 W x 143 H x 102 D	152 KG	189 KG
e23M-3	56.6 D x 57.2 H	156	7.62	(1) 50.8 full, (4) half	H-E-K23S/30	76 W x 160 H x 102 D	122 W x 145 H x 102 D	159 KG	193 KG
e23T	58.9D x 68.6 H	199	6.35	(2) 53.3 full, (4) half	H-E-K23T/00	76 W x 173 H x 102 D	122 W x 153 H x 102 D	164 KG	209 KG
e23T-3	56.6 D x 68.6 H	190	7.62	(2) 50.6 full, (4) half	H-E-K23T/30	76 W x 173 H x 102 D	122 W x 155 H x 102 D	173 KG	214 KG

MORE: See each model page on hotkilns.com to download PDF General Dimension Drawings for more outside and inside dimensions, minimum space requirements, BTU ventilation requirements, and kiln weight. See the Shipping Tab on the model page for complete shipping dimension and shipping weight information.



Electrical Specifications for e23 SERIES

Model Numbers	Part Number for 2.5" Brick	Part Number for 3" Brick	Volt/ Phase	Watts	Amps	Wire Size	Fuse Size	Power Connection
e23S-240 / e23S-3-240	K-E-23SX/31	K-E-23S3/31	240/1P	9,460	39.4	6 ga	50 Amps	6-50 Cordset
e23S-240-3P / e23S-3-240-3P	K-E-23SX/32	K-E-23S3/32	240/3P	9,460	34.1	6 ga	50 Amps	15-50 Cordset
e23S-208 / e23S-3-208	K-E-23SX/21	K-E-23S3/21	208/1P	8,320	40.0	6 ga	50 Amps	6-50 Cordset
e23S-208-3P / e23S-3-208-3P	K-E-23SX/22	K-E-23S3/22	208/3P	8,320	34.6	6 ga	50 Amps	15-50 Cordset
e23M-240 / e23M-3-240	K-E-23MX/31	K-E-23M3/31	240/1P	11,520	48.0	6 ga	60 Amps	6-50 Cordset
e23M-240-3P / e23M-3-240-3P	K-E-23MX/32	K-E-23M3/32	240/3P	11,520	33.3	6 ga	50 Amps	15-50 Cordset
e23M-208 / e23M-3-208	K-E-23MX/21	K-E-23M3/21	208/1P	9,985	48.0	6 ga	60 Amps	6-50 Cordset
e23M-208-3P / e23M-3-208-3P	K-E-23MX/22	K-E-23M3/22	208/3P	11,520	38.4	6 ga	50 Amps	15-50 Cordset
e23T-240 / e23T-3-240	K-E-23TX/31	K-E-23T3/31	240/1P	11,520	48.0	6 ga	60 Amps	6-50 Cordset
e23T-240-3P / e23T-3-240-3P	K-E-23TX/32	K-E-23T3/32	240/3P	11,520	27.7	8 ga	40 Amps	15-50 Cordset
e23T-208 / e23T-3-208	K-E-23TX/21	K-E-23T3/21	208/1P	9,980	48.0	6 ga	60 Amps	6-50 Cordset
e23T-208-3P / e23T-3-208-3P	K-E-23TX/22	K-E-23T3/22	208/3P	11,000	30.5	8 ga	40 Amps	15-50 Cordset
WORLD VOLTAGES								
e23S-220 / e23S-3-220	K-E-23SX/41	K-E-23S3/41	220/1P	8,660	39.4	6 ga	50 Amps	Direct Wire
e23S-380-3P / e23S-3-380-3PY	K-E-23SX/52	K-E-23S3/52	380/3PY	8,660	19.7	12 ga	25 Amps	Direct Wire
e23M-220 / e23M-3-220	K-E-23MX/41	K-E-23M3/41	220/1P	10,560	48.0	6 ga	60 Amps	Direct Wire
e23M-380-3P / e23M-3-380-3PY	K-E-23MX/52	K-E-23M3/52	380/3PY	11,520	20.9	10 ga	30 Amps	Direct Wire
e23T-220 / e23T-3-220	K-E-23TX/41	K-E-23T3/41	220/1P	10,560	48.0	6 ga	60 Amps	Direct Wire
e23T-380-3P / e23T-3-380-3PY	K-E-23TX/52	K-E-23T3/52	380/3PY	11,400	17.3	12 ga	20 Amps	Direct Wire

MET UL499 Listing: All models are c-MET-us listed to UL499 standard.

Cone Rating: All e23 models are rated to Cone 10.

Wiring Diagrams: See the **Electrical Tab** for each kiln model to get the wiring diagram for each voltage.

Power connection: A six foot cord with a 50 amp NEMA 6-50 for single phase units or a 15-50 plug for 3 phase units is included. (No neutral is necessary). World voltage kilns do not include a cord - they are direct wired. All kilns may be direct wired.

Elements: All elements are of equal resistance value. S models have four elements. M models have five elements. T models have six elements. Quad elements are the same resistance but longer and thicker.

Other voltages for any country in the world are available. Examples are 200V/3 Phase Delta, 220V/3 Phase Delta, 415V/3 Phase Wye and 400V/3 Phase Wye. CE Listing available in some countries. See 380 Volt diagrams for electrical specifications for 400V/3 Phase Wye and 415V/3 Phase Wye.

Moving and installation: The kiln comes assembled but can be quickly disassembled and reassembled to move through any door or up stairs. It comes packed in a skidded carton with secure foam-in-place packaging.

Shipping Dimensions: See website for shipping dimensions with various combinations of options.

e23S

Temperature Rating: Cone 10

Volume: 4.7 Cubic Feet

Brick Thickness: 2.5" Brick

Inside: 23.3" Diam x 18" High

Outside Dimensions: 30" W x 59" H x 40" D

Shipping Dim with Vent & Furn Kit: 48" W x 51" H x 40" D

Ship Weight (Kiln): 305 LBS

Ship Weight (Kiln, Vent & Furn Kit): 385 LBS



FURNITURE KIT FOR e23S

Part Number: H-E-K23S/00

Includes: One 21" (53.3 cm) full shelf and four half shelves, One post kit with 6 each 1/2", 1", 2", 4", 6", and 8" square posts, and one pair heat resistant gloves.



e23S-3

Temperature Rating: Cone 10

Volume: 4.4 Cubic Feet

Brick Thickness: 3" Brick

Inside: 22.3" Diam x 18" High

Outside Dimensions: 30" W x 59" H x 40" D

Shipping Dim with Vent & Furn Kit: 48" W x 52" H x 40" D

Ship Weight (Kiln): 320 LBS

Ship Weight (Kiln, Vent & Furn Kit): 395 LBS



FURNITURE KIT FOR e23S-3

Part Number: H-E-K23S/30

Includes: One 20" (50.8 cm) full shelf and four half shelves, One post kit with 6 each 1/2", 1", 2", 4", 6", and 8" square posts, and one pair heat resistant gloves.



e23M

Temperature Rating: Cone 10

Volume: 5.9 Cubic Feet

Brick Thickness: 2.5" Brick

Inside: 23.3" Diam x 22.5" High

Outside Dimensions: 30" W x 63" H x 40" D

Shipping Dim with Vent & Furn Kit: 48" W x 56" H x 40" D

Ship Weight (Kiln): 335 LBS

Ship Weight (Kiln, Vent & Furn Kit): 415 LBS

**New
Model**



FURNITURE KIT FOR e23M

Part Number: H-E-K23S/00

Includes: One 21" (53.3 cm) full shelf and four half shelves, One post kit with 6 each 1/2", 1", 2", 4", 6", and 8" square posts, and one pair heat resistant gloves.



e23M-3

Temperature Rating: Cone 10

Volume: 5.5 Cubic Feet

Brick Thickness: 3" Brick

Inside: 22.3" Diam x 22.5" High

Outside Dimensions: 30" W x 63" H x 40" D

Shipping Dim with Vent & Furn Kit: 48" W x 57" H x 40" D

Ship Weight (Kiln): 350 LBS

Ship Weight (Kiln, Vent & Furn Kit): 425 LBS

**New
Model**



FURNITURE KIT FOR e23M-3

Part Number: H-E-K23S/30

Includes: One 20" (50.8 cm) full shelf and four half shelves, One post kit with 6 each 1/2", 1", 2", 4", 6", and 8" square posts, and one pair heat resistant gloves.



e23T

Temperature Rating: Cone 10

Volume: 7 Cubic Feet

Brick Thickness: 2.5" Brick

Inside: 23.2" Diam x 27" High

Outside Dimensions: 30" W x 68" H x 40" D

Shipping Dim with Vent & Furn Kit: 48" W x 60" H x 40" D

Ship Weight (Kiln): 360 LBS

Ship Weight (Kiln, Vent & Furn Kit): 460 LBS



FURNITURE KIT FOR e23T

Part Number: H-E-K23T/00

Includes: Two 21" (5.3 cm) full shelf and four half shelves, One post kit with 6 each 1/2", 1", 2", 4", 6", and 8" square posts, and one pair heat resistant gloves.



e23T-3

Temperature Rating: Cone 10

Volume: 6.7 Cubic Feet

Brick Thickness: 3" Brick

Inside: 22.3" Diam x 27" High

Outside Dimensions: 30" W x 68" H x 40" D

Shipping Dim with Vent & Furn Kit: 48" W x 61" H x 40" D

Ship Weight (Kiln): 380 LBS

Ship Weight (Kiln, Vent & Furn Kit): 470 LBS



FURNITURE KIT FOR e23T-3

Part Number: H-E-K23T/30

Includes: Two 20" (50.8 cm) full shelf and four half shelves, One post kit with 6 each 1/2", 1", 2", 4", 6", and 8" square posts, and one pair heat resistant gloves.



Dimension & Weight Specifications for e28 SERIES

Model Number	Inside Dimensions	Cubic Feet	Brick Thick	Furniture Kit	Furn Kit Part No.	Outside Dimensions	Shipping Dimensions (w Kit and Vent)	Ship Weight Kiln Only	Ship Wght Kiln/Kit/Vent
e28S-3	28"D x 18"H	6.8	3"	(6) 25.5" half	H-E-K28S/00	35" W x 65" H x 46" D	48" W x 52" H x 40" D	410 LBS	520 LBS
e28M-3	28"D x 22.5"H	8.5	3"	(6) 25.5" half	H-E-K28S/00	35" W x 69" H x 46" D	48" W x 57" H x 40" D	445 LBS	555 LBS
e28T-3	28"D x 27"H	10.2	3"	(8) 25.5" half	H-E-K28T/00	35" W x 74" H x 46" D	48" W x 61" H x 40" D	475 LBS	610 LBS
METRIC DIMENSIONS (CM, LITERS & KG)									
e28S-3	71.1 D x 45.7 H	193	7.62	(6) 64.8 half	H-E-K28S/00	89 W x 165 H x 117 D	122 W x 133 H x 102 D	186 KG	236 KG
e28M-3	71.1 D x 57.2 H	241	7.62	(6) 64.8 half	H-E-K28S/00	89 W x 175 H x 117 D	122 W x 145 H x 102 D	202 KG	252 KG
e28T-3	71.1 D x 68.6 H	289	7.62	(8) 64.8 half	H-E-K28T/00	89 W x 188 H x 117 D	122 W x 155 H x 102 D	216 KG	277 KG

MORE: See each model page on hotkilns.com to download PDF General Dimension Drawings for more outside and inside dimensions, minimum space requirements, BTU ventilation requirements, and kiln weight. See the Shipping Tab on the model page for complete shipping dimension and shipping weight information.



e28S-3

e28M-3

e28T-3

Electrical Specifications for e28 SERIES

Model Numbers	Part Number	Voltage/Phase	Cone Limit	Watts	Amps	Wire Size	Fuse Size	Power Connection
e28S-3-240	K-E-28SX/31	240/1P	10	11,520	48.0	6 ga	60 Amps	6-50 Cordset
e28S-3-240-3P	K-E-28SX/32	240/3P	10	11,520	41.6	6 ga	60 Amps	15-50 Cordset
e28S-3-208	K-E-28SX/21	208/1P	10	9,985	48.0	6 ga	60 Amps	6-50 Cordset
e28S-3-208-3P	K-E-28SX/22	208/3P	10	9,985	41.6	6 ga	60 Amps	15-50 Cordset
e28M-240 / e28M-3-240	K-E-23MX/31	240/1P	10	11,520	48.0	6 ga	60 Amps	6-50 Cordset
e28M-240-3P / e28M-3-240-3P	K-E-23MX/32	240/3P	10	13,850	40.0	6 ga	50 Amps	15-50 Cordset
e28M-208 / e28M-3-208	K-E-23MX/21	208/1P	8	9,985	48.0	6 ga	60 Amps	6-50 Cordset
e28M-208-3P / e28M-3-208-3P	K-E-23MX/22	208/3P	10	13,850	46.1	6 ga	60 Amps	15-50 Cordset
e28T-3-240	K-E-28TX/31	240/1P	8	11,520	48.0	6 ga	60 Amps	6-50 Cordset
e28T-3-240-3P	K-E-28TX/32	240/3P	10	16,620	39.8	6 ga	50 Amps	15-50 Cordset
e28T-3-240-3P-40A	K-E-28TL/32	240/3P	8	11,520	27.7	8 ga	40 Amps	15-50 Cordset
e28T-3-208	K-E-28TX/21	208/1P	5	9,985	48.0	6 ga	60 Amps	6-50 Cordset
e28T-3-208-3P	K-E-28TX/22	208/3P	10	14,340	39.8	6 ga	50 Amps	15-50 Cordset
e28T-3-208-3P-40A	K-E-28TL/22	208/3P	8	11,520	32.0	8 ga	40 Amps	15-50 Cordset
WORLD VOLTAGES								
e28S-220 / e28S-3-220	K-E-28SX/41	220/1P	8	10,560	48.0	6 ga	60 Amps	Direct Wire
e28S-380-3P / e28S-3-380-3PY	K-E-28SX/52	380/3PY	10	10,560	24.0	10 ga	30 Amps	Direct Wire
e28M-220 / e28M-3-220	K-E-28MX/41	220/1P	8	10,560	48.0	6 ga	60 Amps	Direct Wire
e28M-380-3P / e28M-3-380-3PY	K-E-28MX/52	380/3PY	10	13,850	25.2	8 ga	40 Amps	Direct Wire
e28T-220 / e28T-3-220	K-E-28TX/41	220/1P	8	10,560	48.0	6 ga	60 Amps	Direct Wire
e28T-380-3P / e28T-3-380-3PY	K-E-28TX/52	380/3PY	10	15,060	22.8	10 ga	30 Amps	Direct Wire

MET UL499 Listing: All models are c-MET-us listed to UL499 standard.

Note about high fire in a single phase e28T-3: If you plan to fire regularly to higher temperatures like cone 6 it is highly recommended to buy a Jupiter JD2927-3 or an eQ2827-3. Those models have higher watts and amperage in the single phase versions. The 3 phase e28T-3, on the other hand, has more than enough power to get to Cone 10 consistently.

Note about e28T-240-3P-40 & e28T-208-3P-40: These are made available for customers who need to make a one to one replacement for certain competitor kilns. Whenever possible we recommend the higher wattage versions of the kilns.

Power connection: A six foot cord with a 50 amp NEMA 6-50 for single phase units or a 15-50 plug for 3 phase units is included. (No neutral is necessary). World voltage kilns do not include a cord - they are direct wired. All kilns may be direct wired.

Wiring Diagrams: See the **Electrical Tab** for each kiln model to get the wiring diagram for each voltage.

Elements: All elements are of equal resistance value. S models have four elements. M models have five elements. T models have six elements. Quad elements are the same resistance but longer and thicker.

Other voltages for any country in the world are available. Examples are 200V/3 Phase Delta, 220V/3 Phase Delta, 415V/3 Phase Wye and 400V/3 Phase Wye. CE Listing available in some countries. See 380 Volt diagrams for electrical specifications for 400V/3 Phase Wye and 415V/3 Phase Wye.

e28S-3

Temperature Rating: Cone 10

Volume: 6.8 Cubic Feet

Brick Thickness: 3" Brick

Inside: 28" Diam x 18" High

Outside Dimensions: 35" W x 65" H x 46" D

Shipping Dim with Vent & Furn Kit: 48" W x 52" H x 40" D

Ship Weight (Kiln): 410 LBS

Ship Weight (Kiln, Vent & Furn Kit): 520 LBS



FURNITURE KIT FOR e28S-3

Part Number: H-E-K28S/00

Includes: Six 25.5" (64.8 cm) half shelves, One post kit with 6 each 1/2", 1", 2", 4", 6", and 8" square posts, and one pair heat resistant gloves.



e28M-3

Temperature Rating: Cone 10

Volume: 8.5 Cubic Feet

Brick Thickness: 3" Brick

Inside: 28" Diam x 22.5" High

Outside Dimensions: 35" W x 69" H x 46" D

Shipping Dim with Vent & Furn Kit: 48" W x 57" H x 40" D

Ship Weight (Kiln): 445 LBS

Ship Weight (Kiln, Vent & Furn Kit): 555 LBS

**New
Model**



FURNITURE KIT FOR e28S

Part Number: H-E-K28S/00

Includes: Six 25.5" (64.8 cm) half shelves, One post kit with 6 each 1/2", 1", 2", 4", 6", and 8" square posts, and one pair heat resistant gloves.



e28T-3

Temperature Rating: Cone 10

Volume: 10.2 Cubic Feet

Brick Thickness: 3" Brick

Inside: 28" Diam x 27" High

Outside Dimensions: 35" W x 74" H x 46" D

Shipping Dim with Vent & Furn Kit: 48" W x 61" H x 40" D

Ship Weight (Kiln): 475 LBS

Ship Weight (Kiln, Vent & Furn Kit): 610 LBS



FURNITURE KIT FOR e28T

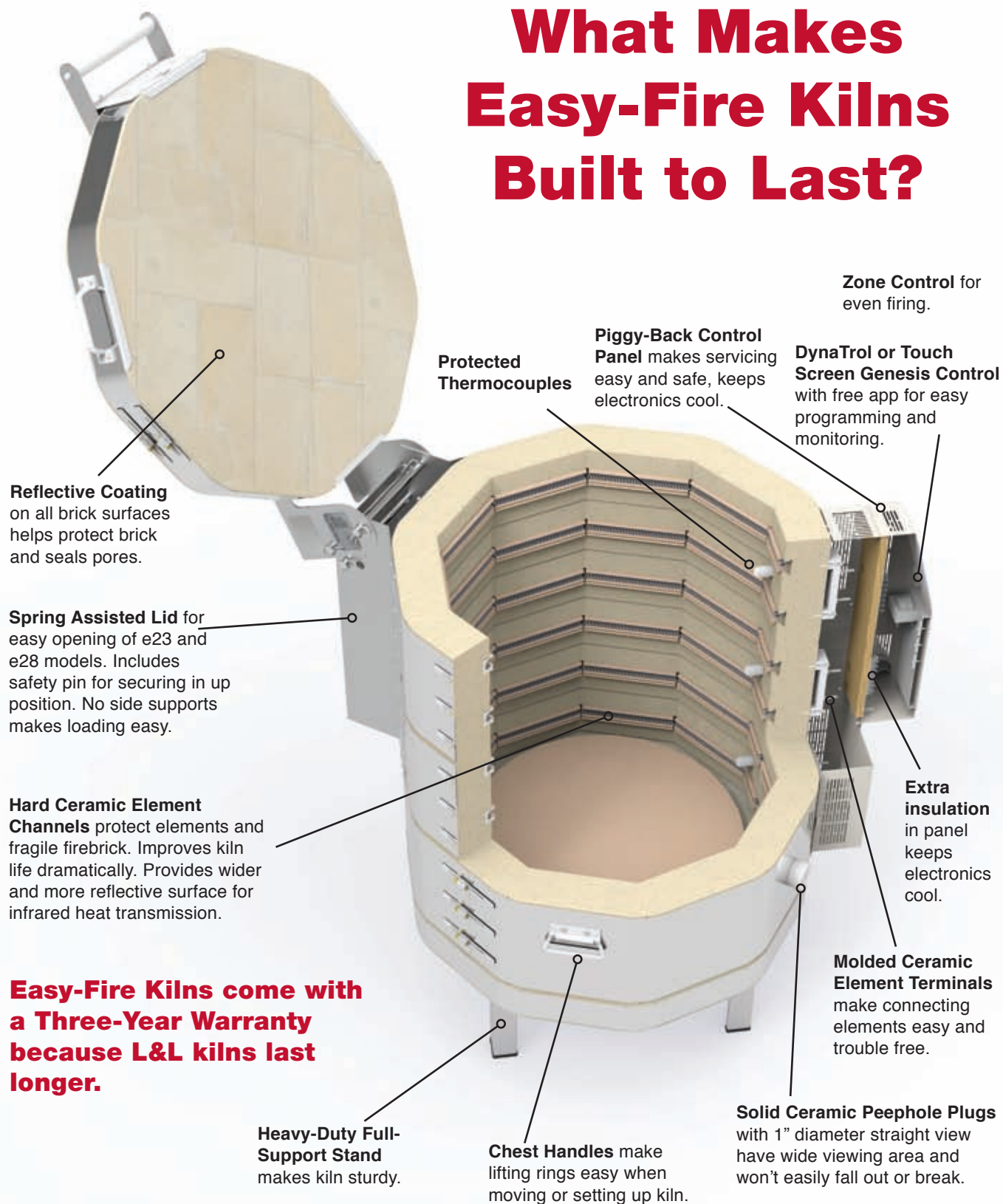
Part Number: H-E-K28T/00

Includes: Eight 25.5" (64.8 cm) half shelves, One post kit with 6 each 1/2", 1", 2", 4", 6", and 8" square posts, and one pair heat resistant gloves.

Note about high fire in a single phase e28T-3: If you plan to fire regularly to higher temperatures like cone 6 it is highly recommended to buy a Jupiter JD2927-3 or an eQ2827-3. Those models have higher watts and amperage in the single phase versions. The 3 phase e28T-3, on the other hand, has more than enough power to get to Cone 10 consistently.



What Makes Easy-Fire Kilns Built to Last?



505 Sharptown Road • Swedesboro, NJ 08085
Phone: 856.294.0077 • Fax: 856.294.0070
sales@hotkilns.com • hotkilns.com

KILNS BUILT TO LAST

Bulletin No: EZ-0121