



L&L Kiln Mfg. Inc.
 505 Sharptown Road • Swedesboro, NJ 08085
 Phone: 856.294.0077 • Fax: 856.294.0070
 sales@hotkilns.com • hotkilns.com

eFL KILNS – ORDER CHECKLIST

After this checklist is reviewed L&L will enter the order and send a confirmation to the distributor to be signed. The kiln will then be scheduled for production and an email with the estimated completion date sent to both the distributor and the customer. When the kiln is finished, we will send an email to the distributor for approval to ship.

DISTRIBUTOR & SALESPERSON _____

CUSTOMER NAME _____

MAIN PHONE NUMBER _____

ALTERNATE PHONE NUMBERS _____

EMAIL _____

Physical Street Address for Delivery (Include City/State/Zip Code): (No PO Boxes)

KILN MODEL NUMBER: _____

- Accessories: - Furniture Kit - Vent System - Vent Control - Casters
- Genesis Control -Type S TCs

Other Options or special modifications: _____

VOLTAGE:

- 240 Volts 1/Phase - 240 Volts 3/Phase - 208 Volts 1/Phase - 208 Volts 3/Phase
**International Only:* - 220 Volts 1/Phase - 380 Volts 3/Phase (Wye)

FOR COMMERCIAL, INDUSTRIAL & INSTITUTIONAL CUSTOMERS:

Please note, the fact that a business is operated in a location does not mean the building itself is a commercial address. Any business operated from a home, apartment, or other dwelling where people live on the premises is considered to be residential address **for the purpose of shipping**. Exact classification can vary by carriers. Carriers will re-classify delivery address as they deem. Schools or Institutions may incur limited access fee. Kiln Orders are only deliverable by freight carriers. We cannot ship eFL kilns to terminals for pickup.

Is there a Loading Dock? - Yes - No Loading Dock Height:_____

Can an 18-wheel 48 to 53 foot truck back up to the unloading area*? - Yes - No

* A 28-foot pup/short truck with a tailgate – may not be available in all locations.

I have examined the General Dimension Drawing for my model and have determined it will fit through my smallest door. - Yes - No

eFL1616: hotkilns.com/general-dimension-drawing-efl1616

eFL1626: hotkilns.com/general-dimension-drawing-efl1626

eFL2026: hotkilns.com/general-dimension-drawing-efl2026

eFL2626: hotkilns.com/general-dimension-drawing-efl2626

eFL2635: hotkilns.com/general-dimension-drawing-efl2635

FOR RESIDENTIAL CUSTOMERS:

I have read the RECEIVING & INSTALLATION OF THE EFL FRONT-LOADING KILNS (hotkilns.com/efl-install-instruct) and watched the appropriate installation videos (hotkilns.com/unpack-efl) and certify that my delivery conditions meet the requirements.

- Yes - No Any other information you want us to know:

OTHER CONSIDERATIONS

- Is the kiln to be located on the same level as the place where it is unloaded? - Yes - No
- Are there any inclines or steps to deal with? - Yes - No _____
- Will the kiln be vented? Yes No (If not please be aware that this affects the warranty).
- You will need at least 18" around the perimeter of the kiln when firing. (Get the caster option if you need to move the kiln when firing to achieve this clearance.)

Customer Signature: _____ Date: _____

PLEASE RETURN PAGE 1 & 2 OF THIS CHECKLIST TO SALES@HOTKILNS.COM

THE RECEIVING & INSTALLATION INSTRUCTIONS ARE ATTACHED TO THIS.

RECEIVING & INSTALLATION OF EFL FRONT-LOADING KILNS

BEFORE YOU GET YOUR KILN

Read these instructions and decide how you will handle the kiln when you get it - don't wait until it arrives.

Decide how you are going to unload the kiln. eFL Kilns are not like typical top loading sectional kilns. They are top-heavy and require special handling to unload and move them. In particular the largest model requires special handling because of its weight.

Note that weights and center of masses are indicated on the General Dimension Drawings which are available on our website (hotkilns.com/efl-gendim). Also see page 3.

Watch the videos

hotkilns.com/unpack-efl

If you are not comfortable moving and installing the kiln yourself - especially if you have difficult installation conditions - we can recommend hiring a professional moving company or rigger to unload the kiln from its pallet and put in place.

L&L has partnered with a network of professional office movers. They have the training and equipment to deliver and move these kilns safely and carefully into your final position and to do all the final assembly work. They will assess your specific installation requirements and provide you with a quote before you get your kiln. We highly recommend every customer get a quote after they receive their acknowledgment.

Contact:

OMR (Office Moving Alliance)

Phone: 800-807-3431

Email: [jcapodanno@](mailto:jcapodanno@BusinessMoveSolutions.com)

BusinessMoveSolutions.com

Remember, because of the nature of the product, there is some unavoidable risk and you must take proper safety precautions at all times.

CAUTIONS & DELIVERY ISSUES

Unloading & Moving

1. The high center of mass makes the eFL kilns a potential tipping hazard. The kilns can weigh over 500 lbs. and are top heavy. If the kiln leans over far enough to exceed the tipping point it will fall over and the weight of the falling kiln could cause severe injury or death.
2. Exercise extreme caution at all times when moving and if you do not feel qualified to do the job then hire a professional.
3. If you have the caster option never move the kiln from above the base (like by pulling on the door handle.)
4. eFL Kilns, unlike sectional top-loading kilns, cannot be easily disassembled for easy moving.
5. They cannot be removed from a truck without the aid of a lift gate or fork lift.
6. They cannot easily be lifted over curbs, transported on non-paved roads or walkways, tilted (because of being top heavy), or moved up inclines without a forklift or other secure method.
7. They cannot be moved up or down stairs.
8. Terrain and grade must be essentially smooth, hard and flat. (Note: it may be possible to cover gravel or grass with plywood to move the kilns).
9. No second story installation unless you have an appropriate elevator (because the kiln body cannot be disassembled and moved up stairs).
10. 30" minimum door opening

Trucking Company Rules:

1. No dirt roads
2. No dead ends
3. Must have ability for truck to turn around
4. No woods/narrow drives

RECEIVING & INSTALLATION OF EFL FRONT-LOADING KILNS

5. Gravel drive depends on weather (no rain or snow in forecast)
6. No inside delivery
7. Lift gate unavailable for certain addresses

Where can the kiln be delivered?

1. Any addresses with loading docks and/or forklifts.
2. Shipping to typical shipping terminals is not acceptable because ownership cannot be transferred to the buyer before opening and inspecting the kiln. If any damage were to happen between the terminal and the final destination no claim could be filed.
3. L&L cannot be held responsible for any damage to the kiln once it is moved from its initial delivery location.
4. Any place where you can promptly inspect for shipping damage (MUST BE WITHIN 3 DAYS) and then subsequently move safely to your location. L&L cannot take responsibility for any damage after the initial inspection.
5. Homes where the above trucking company rules are met.
6. Difficult addresses might require you to have the kiln shipped to a professional mover and then moved into place by the mover.

WHEN YOU FIRST RECEIVE YOUR KILN: INSPECT FOR DAMAGE!

Who is responsible?

L&L takes responsibility for filing damage claims as long as customers follow our guidelines. Because of this:

1. L&L controls all shipping for eFL kilns to minimize the risk of damage by selecting appropriate and proven carriers and knowing how they work with sub-carriers
2. Typically, eFL kilns will ship by common carrier but air ride can be an option and might be required for certain situations.

Do this within 3 days of receiving!

Before signing the Bill of Lading inspect for any visible signs of damage.

Note: Some drivers will not let the customer inspect the kiln unless they sign the Bill of Lading first. If this happens you can sign the Bill of Lading but not let the driver leave until it is inspected. This would need to be done within a 30 minute window - otherwise there will be an additional charge. We suggest that you are ready to at least take the box and shrink wrap off the kiln which should not take more than 15 minutes. (See the videos before you get the kiln and be ready for this).

There are three main causes for shipping damage:

1. Dropping the kiln when loading and unloading during a terminal transfer during shipping
2. Tipping over (this will be very obvious)
3. Excessive Vibration. This will be hard or impossible to detect until you have opened up the package.

Inspect the Kiln Shock Watch Label on the outside of the crate. If it is red then note “Possible Concealed Damage” on the Bill of Lading.



If you see anything at all that gives you concern sign the Bill of Lading with the following phrase: “Possible Concealed Damage”. Do not let

the truck driver dissuade you. If you do not note this any shipping damage claims will be hard or impossible to collect on and you may be responsible for the cost of the damage.

After you have received the kiln the first thing is to open the package enough to inspect the door brick (located in the back of the box) and the front of the kiln face in the front. You do not

RECEIVING & INSTALLATION OF EFL FRONT-LOADING KILNS

have to unpack the kiln beyond that point if you intend to store it before installing it.

If you see any damage at all call L&L Kiln Mfg. Inc. (you can call your distributor as well but we handle the claims from the factory office).

IMPORTANT NOTE: THIS MUST BE DONE WITHIN THREE (3) DAYS. OTHERWISE THE SHIPPING COMPANY WILL REFUSE ANY CLAIM AND YOU WILL BE RESPONSIBLE FOR THE DAMAGE EVEN THOUGH YOU DID NOT CAUSE IT.

TOOLS TO HAVE ON HAND

The following list assumes you will be doing all of this work yourself with a team of helpers.

1. Two wrenches with 1/2" opening
2. One nut driver with a 5/16" opening (for tightening bands) (See video)
3. 9/16" socket wrench
4. Crescent wrench or box wrenches
5. Phillips head screw driver (preferably powered)
6. Safety Glasses and gloves
7. Knife or sissors
8. Standard Pallet Jack
9. For eFL2626 and eFL2635 kilns you will need an Engine Hoist or other means of lifting the door onto the Door Mounting Brackets. (Watch the video). This can be rented from the same types of places as a pallet jack. You can also rent a pallet jack from them oand/or power tools. See this link or search for Sunbelt Engine Hoist: sunbeltrentals.com/equipment/detail/1134/0730011/engine-hoist/

Note: These engine hoists can be disassembled for moving and for moving through a door. There is a video on our unpack-efl page.

It looks like this:



WEIGHTS

Approximate weight of kiln bodies without door, vent, hearths or any packing material:

eFL1616: 325 lbs (147 KG)
eFL1626: 410 lbs (186 KG)
eFL2026: 425 lbs (193 KG)
eFL2626: 490 lbs (222 KG)
eFL2635: 575 lbs (261 KG)

Approximate weights of doors:

eFL1616: 80 lbs (36 KG)
eFL1626: 100 lbs (45 KG)
eFL2026: 120 lbs (54 KG)
eFL2626: 135 lbs (61 KG)
eFL2635: 160 lbs (73 KG)

Safe Lifting

If you are not experienced in lifting heavy objects be sure to educate yourself first. There are a number of good videos on Youtube that will instruct you in proper lifting technique.

RECEIVING & INSTALLATION OF EFL FRONT-LOADING KILNS

STARTING THE PROCESS

1. Watch the appropriate video. There is one for the eFL2626 and eFL2635 and a separate video for the eFL1616, eFL1626 and eFL2026.
2. Remove all external packing materials but NOT the box inside the kiln and NOT the straps around the kiln case.
3. Inspect for shipping damage.
4. With the kiln still on the pallet, move the kiln onto a level area as close to where you are going to install the kiln. The floor must be as level as possible when you remove the pallet.
5. Remove the door from the pallet by hand and set aside.
6. Follow the video instructions.

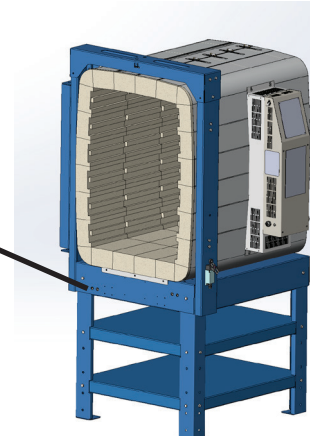
Be mindful of the tipping point of the kiln at all times. You can see the center of mass on the General Dimension drawings. When the door is removed the center of mass is approximately in the center of the kiln about 3 to 12" above the hearth level. The tipping point is approximately 20 Deg. DO NOT EXCEED A GRADE OF MORE THAN 10 DEG (when the door is off). It is much worse when the door is on.

FORKLIFT METHOD

USING A FORKLIFT

1. Almost any forklift will do (although smaller is better). Adjust fork to fit between the legs and lift kiln from under the base (not from under the shelves) to keep the center of gravity as low to the forks as possible.
2. Lift the kiln from the bottom of the base - not the shelves. Adjust forks to fit. You can lift it from the front, back or sides.

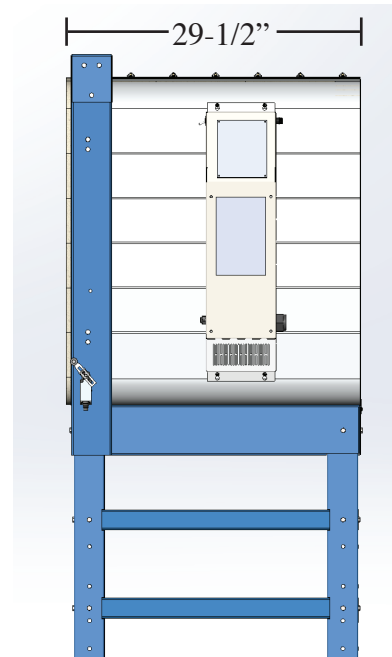
Pick up the kiln up with a forklift at the bottom of the base.



3. Move the kiln into its final position and continue with the final assembly.
4. You can use the forklift as a hoist to lift the door with the nylon rope when you are installing the door (if you want to).

MOVING THE KILN THROUGH A 30" DOOR

1. Do this BEFORE you reinstall the door of the kiln or the vent system.
2. All models are approximately 29-1/2" from the face of the brick front to the back plate of the kiln.



RECEIVING & INSTALLATION OF EFL FRONT-LOADING KILNS

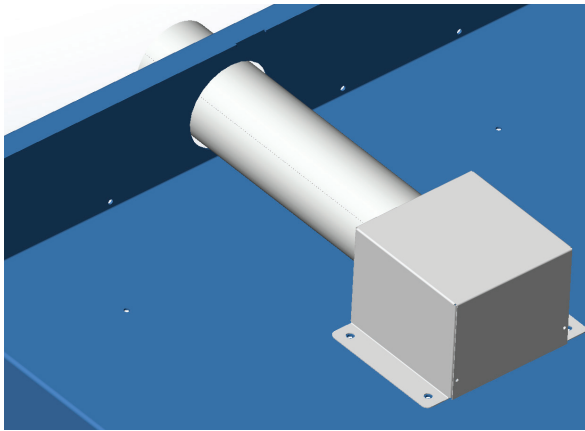
3. Move the kiln using a pallet jack or the Forearm Lifter or Forklift until you get it near the door that you need to go through.
4. By hand with at least two people turn the kiln so it will go through the door sideways.
5. Push it through the door.

CAUTION: Push the kiln as low as you can and **NEVER** above the base of the kiln (not on the brick section). This will be below the center of gravity and will make it harder (but not impossible) to tip over. Push **SLOWLY**.

6. After this you can resume moving the kiln with whatever method you are using.

INSTALLING VENT

1. Install the Vent Collection Box. This gets attached with included hardware.

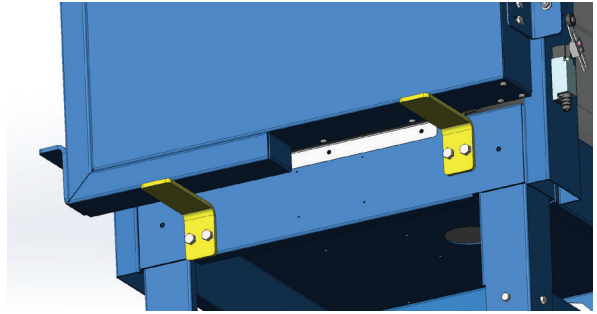


2. See the Vent Instruction for the rest of the process.

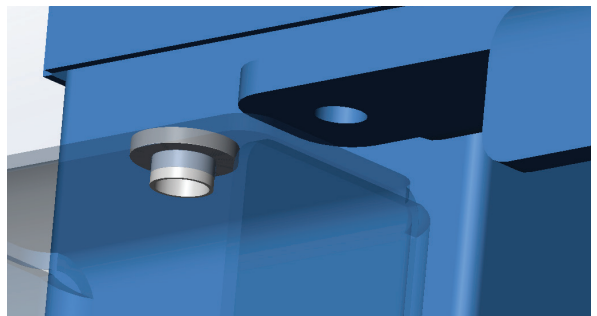
INSTALLING DOOR

This is a two person job. For the larger kilns (eFL2626 and eFL2635) use the engine hoist to lift the door up and in position.

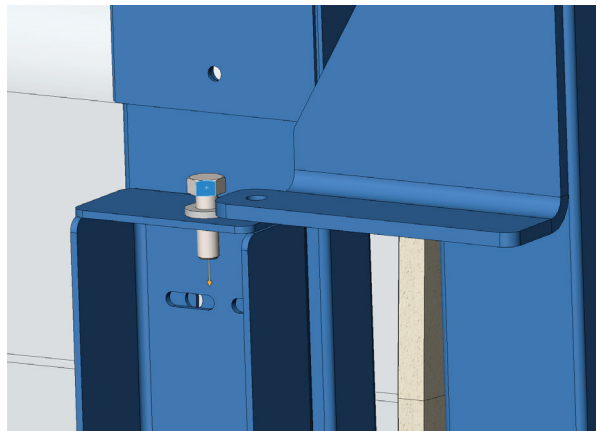
3. Attach two Door Supports into position as shown using 3/8" Bolts (provided).



4. Insert Hinge Bushings (two) in the holes on the Hinge Channel on the top hole as shown and also on the bottom hinge hole.



5. Have the 3/8" Hinge bolts and nuts ready to install.
6. Lift Door in place onto the Door Supports.
7. Slide door back into position and insert the hinge pins (bolts) and secure with the nut. Be sure to leave the stepped bushing in place.



8. When you replace the door be sure to check the adjustment so that the seal is even all around the face of the kiln.

RECEIVING & INSTALLATION OF EFL FRONT-LOADING KILNS

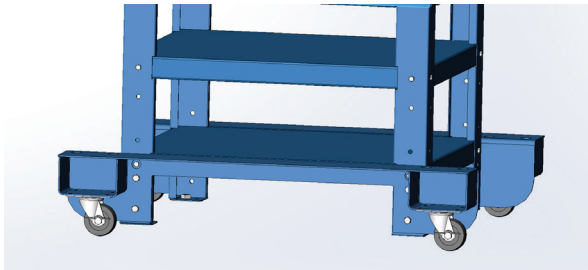
IF YOU DO NOT HAVE THE CASTER OPTION

1. Level kiln with shims or leveling bolts.
2. We recommend using the shipping brackets to bolt the kiln to the floor.

IF YOU HAVE THE CASTER OPTION

Note: not available on the eFL2635

1. Lift kiln up with pallet jack about 1 inch.
2. Follow the video instructions.
3. Bolt on Casters System using the 3/8" Bolts, lock washers and nuts provided.



FINISHING UP

1. Check door for tightness.
2. Check for a level hearth.
3. Vacuum out kiln for any dust.
4. Make sure all elements are tightly in place.
5. Install Door Peephole Plug
6. Have kiln wired by a licensed electrician following your wiring diagram.

FIRST FIRING

1. Leave small ceramic washers that are in the back corners of the kiln in place - at least for the first firing. This ensures that the elements stay in place until they lose their springiness on the first firing.
2. Do your first firing following the First Firing Instructions.