

# Easy-Fire XT Square Top-Loading Kilns

## The Best Square Kiln Made for Performance and Durability.

- Hard Ceramic Element Holders protect brick and make element changes fast and easy
- Dynamic Zone Control keeps temperatures uniform throughout kiln.
- Drop-Down Piggy-Back Panel protects electronics and makes servicing easy
- Protected Thermocouples
- Spring-Assist Hinge on larger models does not need side support bars - makes loading easy from all sides.
- Super-Strong Aluminized Steel Stand securely supports vent system
- For Potters, Teachers, Institutions, Camps, Hobbyists, and Industry - anyone who needs a carefully engineered kiln that will last longer and save money in maintenance costs
- Customize to meet your exact needs. *Every kiln is built to order*



505 Sharptown Road • Swedesboro, NJ 08085  
Phone: 856.294.0077 • Fax: 856.294.0070  
sales@hotkilns.com • hotkilns.com

**KILNS BUILT TO LAST**

Bulletin No: XT-0520



# Easy-Fire XT Square Top Loading Kilns

## Unique L&L Features with Lasting Benefits

### CONE 10 TEMPERATURE RATING

Cone 10, 2350°F, 1290°C (Except for single phase e2327-XT-208 single phase - see specification pages for details).

### 3" OF INSULATION

3" K23 firebrick for all models.

### PATENTED CERAMIC ELEMENT HOLDERS

Protect brick from loading damage, keep elements from falling out of grooves, make changing elements easy, and optimize heat transfer to load. Kiln lasts longer! No pins. ([hotkilns.com/ceramic-holders](http://hotkilns.com/ceramic-holders))



### BRICK COATING FOR DURABILITY

Proprietary reflective brick coating. This helps firebrick stay strong on the surface, helps prevent dusting on your work, and keeps the kiln clean inside. ([hotkilns.com/reflective-coating](http://hotkilns.com/reflective-coating))

### HEAVY-DUTY LARGE ELEMENTS

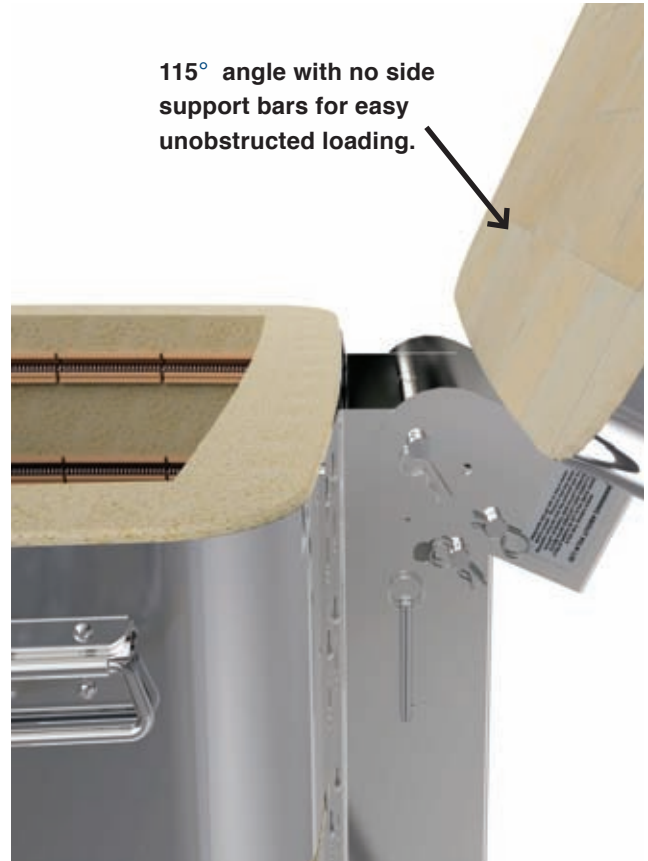
Heavy-duty. 4 elements on e2318-XT and 6 elements on e2327-XT. *Quad elements, which double the element wire, are optional on all models. See Page 6.*

### EXTRA CASE CLAMPS

Stainless worm gear case clamps keep case together and allow for adjustment over time. Three per 9" section, Two per 4.5" section and two on the top and bottom. ([hotkilns.com/case-clamps](http://hotkilns.com/case-clamps))

### "EASY-OPEN, EASY-LOAD" SPRING-LOADED LID OPENS WIDE FOR LOADING

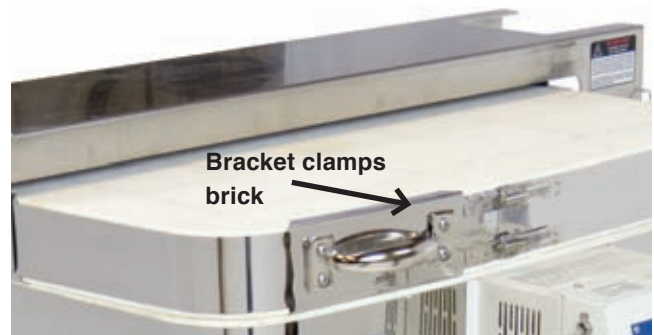
The whole kiln supports the lid (not just one section). Our positive safety pin secures the lid safely. No side support bars get in the way of loading when the lid is fully tilted back. ([hotkilns.com/spring-hinge](http://hotkilns.com/spring-hinge))



115° angle with no side support bars for easy unobstructed loading.

### LID BRICK IS SECURED WITH CLIPS

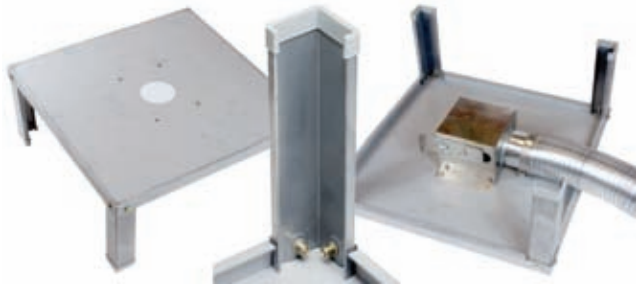
Stainless Steel clips secure lids - not friction. ([hotkilns.com/lid-clips](http://hotkilns.com/lid-clips))



Bracket clamps brick

## HEAVY-DUTY FULL-SUPPORT STAND

Heavy-duty 14 gauge solid stand with multiple bends for strength. Bolt on legs. Feet protectors included. Optional Vent Bypass Collection Box bolts onto bottom of stand with included studs. *Rolling stand is optional. See page 6.* ([hotkilns.com/full-stand](http://hotkilns.com/full-stand))



## EASY ASSEMBLY WITH SECTIONAL CONSTRUCTION

Two 9" sections for the e2318-XT and three for the e2327-XT. Sections stack on top of each other. Easy to assemble or disassemble for moving. Bottom is reversible. ([hotkilns.com/sectional-easy-fire](http://hotkilns.com/sectional-easy-fire))

## CORROSION RESISTANT CONSTRUCTION

Stainless steel wrapped around brick. All stainless screws on case. Stand is galvanized. Vent parts are stainless steel or aluminum. Hinge is stainless steel. Control box is powder coated steel. ([hotkilns.com/case](http://hotkilns.com/case))

## SOLID PEEPHOLE PLUGS

Solid (non-fragile) ceramic plug with heat-locked mushroom head. 1" diameter full-view non-tapered. ([hotkilns.com/peephole-plugs](http://hotkilns.com/peephole-plugs))



## EASY MULTI-PROGRAM DYNATROL

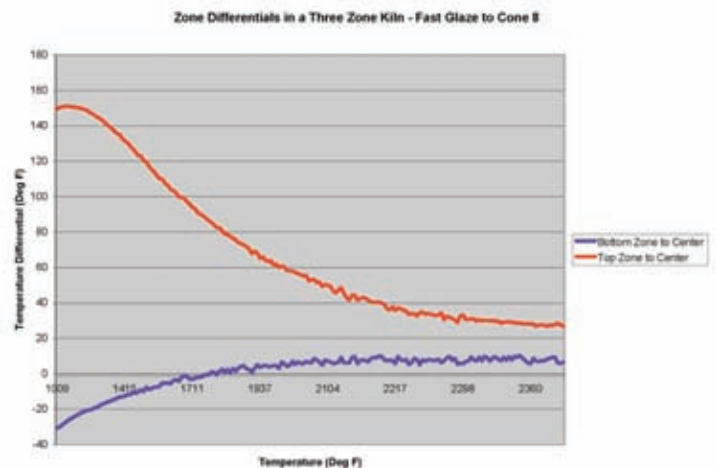


The time-tested DynaTrol with 4 Easy-Fire programs, 6 Vary-Fire programs, PreHeat, Delay, Program & Segment Review, and Diagnostics. Control is mounted on an angled panel for easy viewing. Optional Genesis control (see page

8) features touch screen and free Wifi App for monitoring kiln. ([hotkilns.com/dynatrol](http://hotkilns.com/dynatrol))

## DYNAMIC ZONE CONTROL

This is a *standard* feature with either a DynaTrol or touch-screen Genesis control. The control separately measures temperatures in the bottom, middle, and top of the kiln and automatically adjusts the heat of two or three zones during the firing. Kiln temperatures are automatically equalized to within 1/2 cone or better. Zone control automatically compensates for many loading issues and element resistance changes. Additionally, L&L kilns are fundamentally uniform because the element holders radiate the heat more evenly. ([hotkilns.com/zone-control](http://hotkilns.com/zone-control))

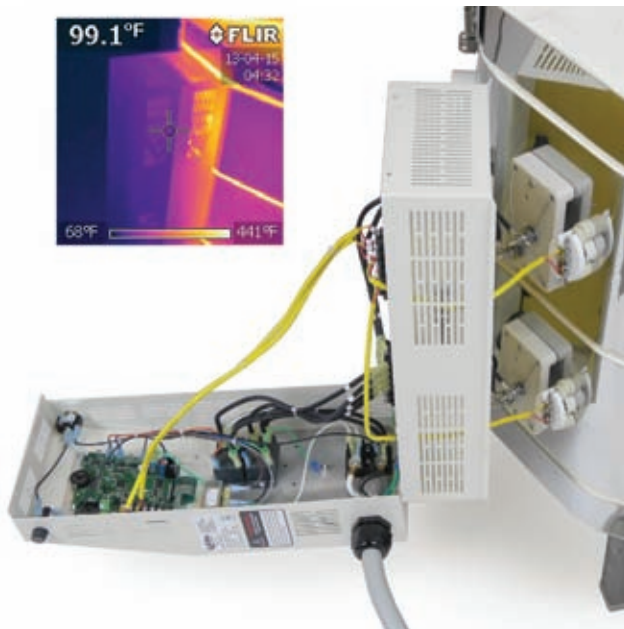
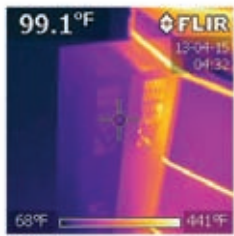




## SEPARATED COOL-FIRING CONTROL PANEL



All controls and components are mounted in a separate control panel that is piggy-backed to the element connection box. In addition a layer of insulation keeps the controls cool - which is critical for long term health of the electronics.



The control panel and element box are hinged for easy access and maintenance. The control box can be easily removed for servicing. On/off switch and control fuse are included.

([hotkilns.com/easy-fire-panel](http://hotkilns.com/easy-fire-panel))

## MERCURY FREE RELAYS

Mercury free relays are standard. See Page 9 for optional electronic SSRs for extra long element life and quiet operation.

## CERAMIC ELEMENT CONNECTIONS

Proprietary all-ceramic element connection block makes changing elements easy.

([hotkilns.com/ceramic-terminal](http://hotkilns.com/ceramic-terminal))



## HEAVY-GAUGE TYPE K THERMOCOUPLES PROTECTED WITH CERAMIC TUBES

Type K 8 gauge thermocouples are protected by ceramic protection tubes. ([hotkilns.com/protected-thermocouples](http://hotkilns.com/protected-thermocouples))



## POWER CORD & PLUG INCLUDED



50 Amp NEMA 6-50 six foot cord included for one phase.



50 Amp NEMA 15-50 six foot cord included for three phase. (All Non-USA kilns are direct wired).

**Same price for all voltages and phases.**



# Easy-Fire XT Square Top Loading Kilns

## COMPLETE VISUAL INSTRUCTIONS

No one has a better or more complete instruction manual. Our visual instructions address the needs of the artist, the installer, and the repair person. You get a fully illustrated operation and service manual. Many instructional videos are available. ([hotkilns.com/support/videos](http://hotkilns.com/support/videos))

## L&L KILNS ARE EASY TO TROUBLESHOOT

Open up any L&L kiln control panel and see how easy it is to check amps, element resistance, and voltage. No other kiln can be serviced as quickly, easily, or inexpensively as an L&L kiln.

## THREE-YEAR WARRANTY

See [hotkilns.com/warranty](http://hotkilns.com/warranty). Email, web and phone support.

## IN-DEPTH SUPPORT

One customer said: "I am truly impressed with your website, it is more than informative and your products are well designed. The fact that all the information, including repair manuals, are listed, speaks well of your dedication to customer service." Our website has thousands of pages of technical help - all easily searchable - plus we provide expert support with phone and email.

## SUSTAINABLE MANUFACTURING

We use solar energy as our primary energy source.

## SUPERIOR PACKAGING

Kilns are securely packed with tubes of foam molded to the kiln. Kilns are shipped in skidded cartons.

## MET UL499 LISTING



c-MET-us listed to UL499 standards assures highest safety standards. ([hotkilns.com/met](http://hotkilns.com/met))



Stop worrying about loading your kiln! Load with confidence. You won't damage the fragile firebrick, touch dangling elements, or damage the protected thermocouples.

Elements can be changed in minutes without damaging the firebrick. NO PINS!

## Optional Kiln Furniture, Rolling Stands, & Quad & APM Element Options

### CONE 11 FURNITURE KITS

Shelves are high alumina cone 11 shelves. Each post kit includes six each 1/2", 1", 2", 4", 6" and 8" high square (1.5" x 1.5") cordierite posts. All furniture kits include one pair heat-resistant gloves.

([hotkilns.com/kiln-furniture](http://hotkilns.com/kiln-furniture))



### APM ELEMENTS

Special sintered alloy provides the ultimate in element life. The special sintered alloy inhibits grain growth and resistance change in the elements.

([hotkilns.com/apm](http://hotkilns.com/apm))

### ROLLING STAND WITH LOCKING CASTERS

Allows kiln to be moved out of the way while not firing. L&L's rolling kiln stand features heavy gauge (14 ga) galvanized steel construction with multiple bends for extra strength, steel swivel locking casters, integrated vent collection box support, and guide rails for the kiln. ([hotkilns.com/rolling-stands](http://hotkilns.com/rolling-stands))



### QUAD ELEMENT DESIGN

The combination of 1/2" diameter element coils, the doubled surface area of the Quad element design, and superior heat transfer of L&L's patented ceramic element holders, make this the best element system in the world today. ([hotkilns.com/quad-option](http://hotkilns.com/quad-option))

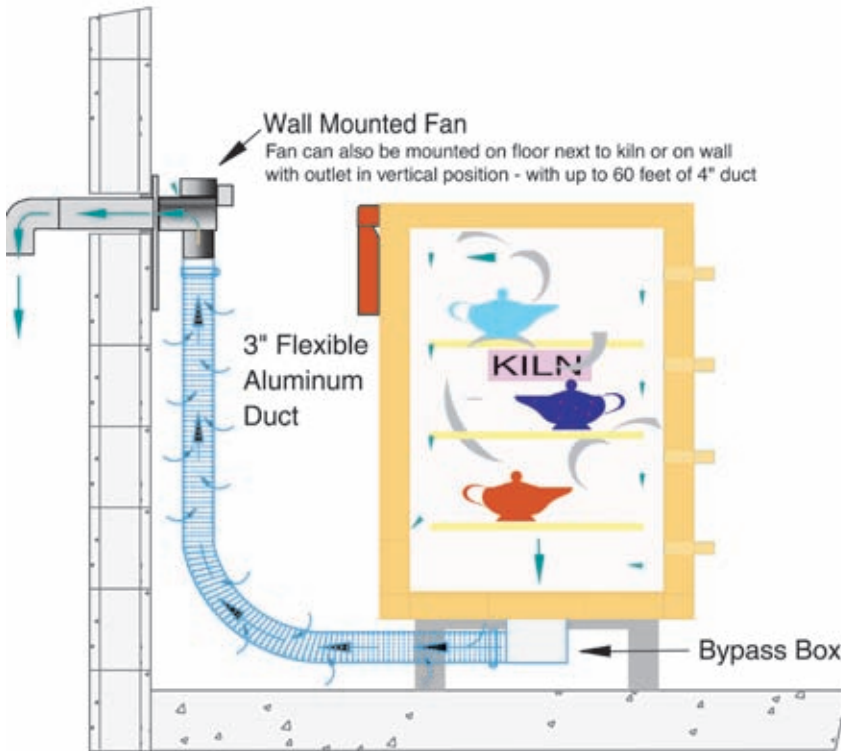




## Ventilation Options & Accessories

### DOWNDRAFT VENT SYSTEM

Vent-Sure downdraft vent vents fumes from kiln out of room and away from kiln. ([hotkilns.com/vent](http://hotkilns.com/vent))



### VENT-SURE FEATURES

- Downdraft venting pulls air down to bottom of kiln
- Improves temperature uniformity inside the kiln
- Powerful 130 CFM fan motor, typically mounted on wall, allows fumes to be under vacuum in your studio
- The strong fan motor helps overcome static pressure in long exhaust lines. The duct may be up to 60 feet in length, and include up to four 90° bends
- 120 volts with on/off switch on cord (240 volts available)
- 15 foot long flexible aluminum duct
- Bypass collection box mounted on kiln allows adjustment of venting.
- Fan motor, mounted away from the kiln, stays cool and no vibration is transmitted to the kiln
- The included Multi-Mounting Bracket allows you to mount the vent on the floor or, alternately, to mount the vent on a wall so that the output of the vent is pointing up.
- Three-year Limited Warranty
- c-MET-us Listed to UL499 standards for use on c-MET-us L&L Kilns



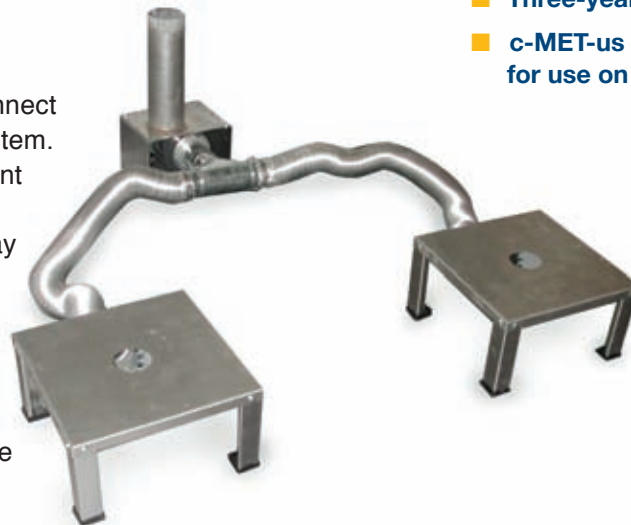
### VENT CONTROL

Allows vent to be controlled with an event switch in the DynaTrol or Genesis. (For use with one kiln.) ([hotkilns.com/vent-control](http://hotkilns.com/vent-control))



### VENT DOUBLER

This accessory allows you to connect two kilns to a Vent-Sure vent system. It can be added to an existing vent system or can be ordered with a new vent. In some cases you may be able to fire two kilns at once. The Vent-Sure has enough force to vent at least 25 cubic feet of kiln. That means, for instance, that two XT kilns could be vented while firing at the same time. ([hotkilns.com/doubler](http://hotkilns.com/doubler))



## Genesis Touch Screen Control with App

### GENESIS TOUCH SCREEN CONTROL

The Genesis control includes a touch screen interface and WIFI connectivity added to the proven software of the DynaTrol. More programming options and memory. Free App available to monitor kiln via WiFi. ([hotkilns.com/genesis](http://hotkilns.com/genesis))



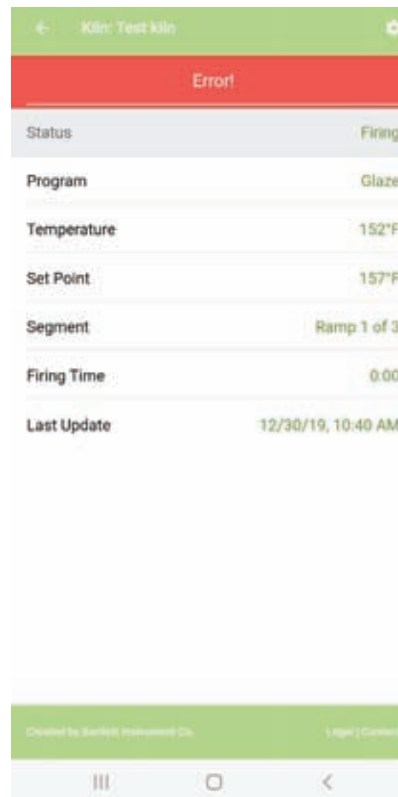
The Genesis control fits right into the control box to replace the DynaTrol. That means you can upgrade anytime!

### GENESIS FEATURES

- Touch-screen intuitive technology for easy user interface.
- Easy-to-follow screen descriptions.
- Different user-interface levels, which can be set to match the user's firing knowledge.
- Graphical display of the firing process right at the controller. This means you can graph the firing in real time and compare the program with actual results.
- Glass programs included.
- Store up to 30 custom user programs.
- Up to 32 segments per program.
- Ability to make adjustments during a firing such as add segments, add temperature, and skip segments.
- Built in diagnostics testing
- Alarm
- Error Codes
- WiFi enabled for easy software updating.
- Included Phone App allows you to monitor kiln operation remotely (with no subscription fee).



See a graph of your firing before you fire, while you fire and after you fire.



This shows the view you get on your phone with the Kiln Aid Phone app. Simply download the Kiln Aid phone app from your Google Play Store or Apple App Store, add your kiln, and begin monitoring as your kiln progresses through a firing. See temperatures, where you are in a program cycle, what program you are firing and error notifications.



## More Control & Power Options

### TYPE S THERMOCOUPLES

The best thermocouple for constant high fire applications. No thermocouple drift. Priced per thermocouple. Note that kilns with four or more sections still only have a three zone control.

([hotkilns.com/type-s](http://hotkilns.com/type-s))

### PYROCIL SHEATHED THERMOCOUPLES

For greater sensitivity to temperature change. Use below 2200°F for sensitivity (glass is a good example). Priced per thermocouple. These are useful for sensitive industrial applications.

([hotkilns.com/pyrocil-tc](http://hotkilns.com/pyrocil-tc))

### KISS SOFTWARE

Kiss (kiln interface software system) connects up to 50 DynaTrol controllers to a personal computer running Windows. Monitor and control kiln remotely. For the DynaTrol only. ([hotkilns.com/kiss](http://hotkilns.com/kiss))

### SOLID STATE RELAYS

Industrial Grade Solid State Relays are quiet and result in longer element life because the switching time is so fast the elements don't expand and

contract as much. The whole system includes extra large heat sinks, special fast acting fuses, cooling fan and extra safety relays. ([hotkilns.com/ssr](http://hotkilns.com/ssr))

*Kiln shown with the special control panel that houses the SSRs and/or High Limit Control*



### HIGH LIMIT BACK UP CONTROL

Bartlett High Limit Control with latching relay acts as a back up to the main control. If the main control fails for any reason then this acts as a "back stop" and shuts the kiln down.

([hotkilns.com/high-limit](http://hotkilns.com/high-limit))

### BACK UP CONTACTORS

Actuated by the High Limit Back Up Digital Control, back up contactors are completely redundant power contactors so that if one or more contactors fail in a closed position, then the kiln still cannot climb above the High Limit set point. ([hotkilns.com/high-limit](http://hotkilns.com/high-limit))

### 120 VOLT POWER SUPPLY

If there are problems with short power outages, voltage spikes, voltage drops, or excessive environmental line noise, this can cause unpredictable behaviour in the electronic control. With this option the control is powered by a separate 120 volt line (with a standard 6 foot long cord) and that voltage is filtered through an EMI (Electrical Magnetic Interference) noise filter. ([hotkilns.com/noise](http://hotkilns.com/noise))

### THE POSITIVE DOOR INTERLOCK SWITCH

Features a strong mechanical latch that must be turned before the door can be opened. The turning of this latch breaks all power to the kiln as if you had used an external power disconnect switch or pulled the power cord from its socket.

([hotkilns.com/door-interlock](http://hotkilns.com/door-interlock))



## Electrical Specifications

| Model Numbers         | Part Number<br>for 3" Brick | Volt/<br>Phase | Watts  | Amps | Wire<br>Size | Fuse<br>Size | Power<br>Connection |
|-----------------------|-----------------------------|----------------|--------|------|--------------|--------------|---------------------|
| e2318-XT-240          | K-Z-231B/31                 | 240/1P         | 9,460  | 39.4 | 6 ga         | 50 Amps      | 6-50 Cordset        |
| e2318-XT-240-3P       | K-Z-231B/32                 | 240/3P         | 9,460  | 37.2 | 6 ga         | 50 Amps      | 15-50 Cordset       |
| e2318-XT-208          | K-Z-231B/21                 | 208/1P         | 9,460  | 45.5 | 6 ga         | 60 Amps      | 6-50 Cordset        |
| e2318-XT-208-3P       | K-Z-231B/22                 | 208/3P         | 9,460  | 39.4 | 6 ga         | 50 Amps      | 15-50 Cordset       |
| e2327-XT-240          | K-Z-232B/31                 | 240/1P         | 11,520 | 48.0 | 6 ga         | 60 Amp       | 6-50 Cordset        |
| e2327-XT-240-3P       | K-Z-232B/32                 | 240/3P         | 11,520 | 30.2 | 8 ga         | 40 Amp       | 15-50 Cordset       |
| e2327-XT-208          | K-Z-232B/21                 | 208/1P         | 9,981  | 48.0 | 6 ga         | 60 Amp       | 6-50 Cordset        |
| e2327-XT-X-208        | K-Z-232X/21                 | 208/1P         | 11,520 | 55.4 | 4 ga         | 70 Amp       | Direct Wire         |
| e2327-XT-208-3P       | K-Z-232B/22                 | 208/3P         | 11,520 | 32.0 | 8 ga         | 40 Amp       | 15-50 Cordset       |
| <b>WORLD VOLTAGES</b> |                             |                |        |      |              |              |                     |
| e2318-XT-220          | K-Z-231B/41                 | 220/1P         | 9,460  | 41.1 | 6 ga         | 60 Amp       | Direct Wire         |
| e2318-XT-380-3P       | K-Z-231B/52                 | 380/3PY        | 9,460  | 21.5 | 10 ga        | 30 Amp       | Direct Wire         |
| e2327-XT-220          | K-Z-232B/41                 | 220/1P         | 11,520 | 50.1 | 4 ga         | 70 Amp       | Direct Wire         |
| e2327-XT-380-3P       | K-Z-232B/52                 | 380/3PY        | 11,520 | 17.5 | 12 ga        | 25 Amp       | Direct Wire         |

**MET UL499 Listing:** All models are c-MET-us listed to UL499 standard.

**Cone Rating:** All e2318-XT kilns are Cone 10. All e2327-XT kilns are cone 10 except the 208 volt, single phase version which is Cone 5 (Note the special 70 amp version - e2327-XT-X-208 which is Cone 10)

**Wiring Diagrams:** See the **Electrical Tab** for each kiln model to get the wiring diagram for each voltage.

**Power connection:** A six foot cord with a 50 amp NEMA 6-50 for single phase units or a 15-50 plug for 3 phase units is included. (No neutral is necessary). World voltage kilns do not include a cord - they are direct wired. All kilns may be direct wired.

**Elements:** All elements are of equal resistance value. e2318-XT has four elements. e2327-XT has six elements. Quad elements are the same resistance but longer and thicker.

**Other voltages** for any country in the world are available. Examples are 200V/3 Phase Delta, 220V/3 Phase Delta, 415V/3 Phase Wye and 400V/3 Phase Wye. CE Listing available in some countries. See 380 Volt diagrams for electrical specifications for 400V/3 Phase Wye and 415V/3 Phase Wye.

**Moving and installation:** The kiln comes assembled but can be quickly disassembled and reassembled to move through any door or up stairs. It comes packed in a skidded carton with secure foam-in-place packaging.

**Shipping Dimensions:** See website for shipping dimensions with various combinations of options.

## Dimension & Weight Specifications

| Model Number                                   | Inside Dimensions | Cubic Feet | Furniture Kit         | Furn Kit Part No. | Outside Dimensions    | Shipping Dimensions (w Kit and Vent) | Ship Weight Kiln Only | Ship Wght Kiln/Kit/Vent |
|------------------------------------------------|-------------------|------------|-----------------------|-------------------|-----------------------|--------------------------------------|-----------------------|-------------------------|
| e2318-XT                                       | 22"D x 18"H       | 5          | (4) 20" x 10" shelves | H-X-K318/00       | 37" W x 60" H x 37" D | 48" W x 52" H x 40" D                | 385 LBS               | 455 LBS                 |
| e2327-XT                                       | 22"D x 27"H       | 7.6        | (6) 20" x 10" shelves | H-X-K327/00       | 37" W x 69" H x 37" D | 48" W x 60" H x 40" D                | 460 LBS               | 550 LBS                 |
| <b>METRIC DIMENSIONS (CM, LITERS &amp; KG)</b> |                   |            |                       |                   |                       |                                      |                       |                         |
| e2318-XT                                       | 56 D x 46 H       | 143        | (4) 51 x 25 shelves   | H-X-K318/00       | 94 W x 152 H x 94 D   | 122 W x 133 H x 102 D                | 175 KG                | 207 KG                  |
| e2327-XT                                       | 56 D x 67 H       | 215        | (6) 51 x 25 shelves   | H-X-K327/00       | 94 W x 175 H x 94 D   | 122 W x 153 H x 102 D                | 209 KG                | 250 KG                  |

**MORE:** See each model page on [hotkilns.com](http://hotkilns.com) to download PDF General Dimension Drawings for more outside and inside dimensions, minimum space requirements, BTU ventilation requirements, and kiln weight. See the Shipping Tab on the model page for complete shipping dimension and shipping weight information.





## e2318-XT

Temperature Rating: Cone 10

Volume: 5 Cubic Feet

Brick Thickness: 3" Brick

Inside: 22" Diam x 18" High

Outside Dimensions: 40" W x 32" H x 42" D

Shipping Dim with Vent & Furn Kit: 48" W x " H x 40" D

Ship Weight (Kiln): LBS

Ship Weight (Kiln, Vent & Furn Kit): LBS



### FURNITURE KIT FOR e2318-XT

Part Number: H-X-K318/00

Includes: Four 20" X 10" Rectangular Shelves (3/4" thick), Six Each 1/2", 1", 2", 4", 6", and 8" Square Posts, Heat Resistant Gloves



## e2327-XT

**Temperature Rating:** Cone 10

**Volume:** 8.1 Cubic Feet

**Brick Thickness:** 3" Brick

**Inside:** 22" Diam x 18" High

**Outside Dimensions:** 40" W x 41" H x 42" D

**Shipping Dim with Vent & Furn Kit:** 48" W x " H x 40" D

**Ship Weight (Kiln):** LBS

**Ship Weight (Kiln, Vent & Furn Kit):** LBS



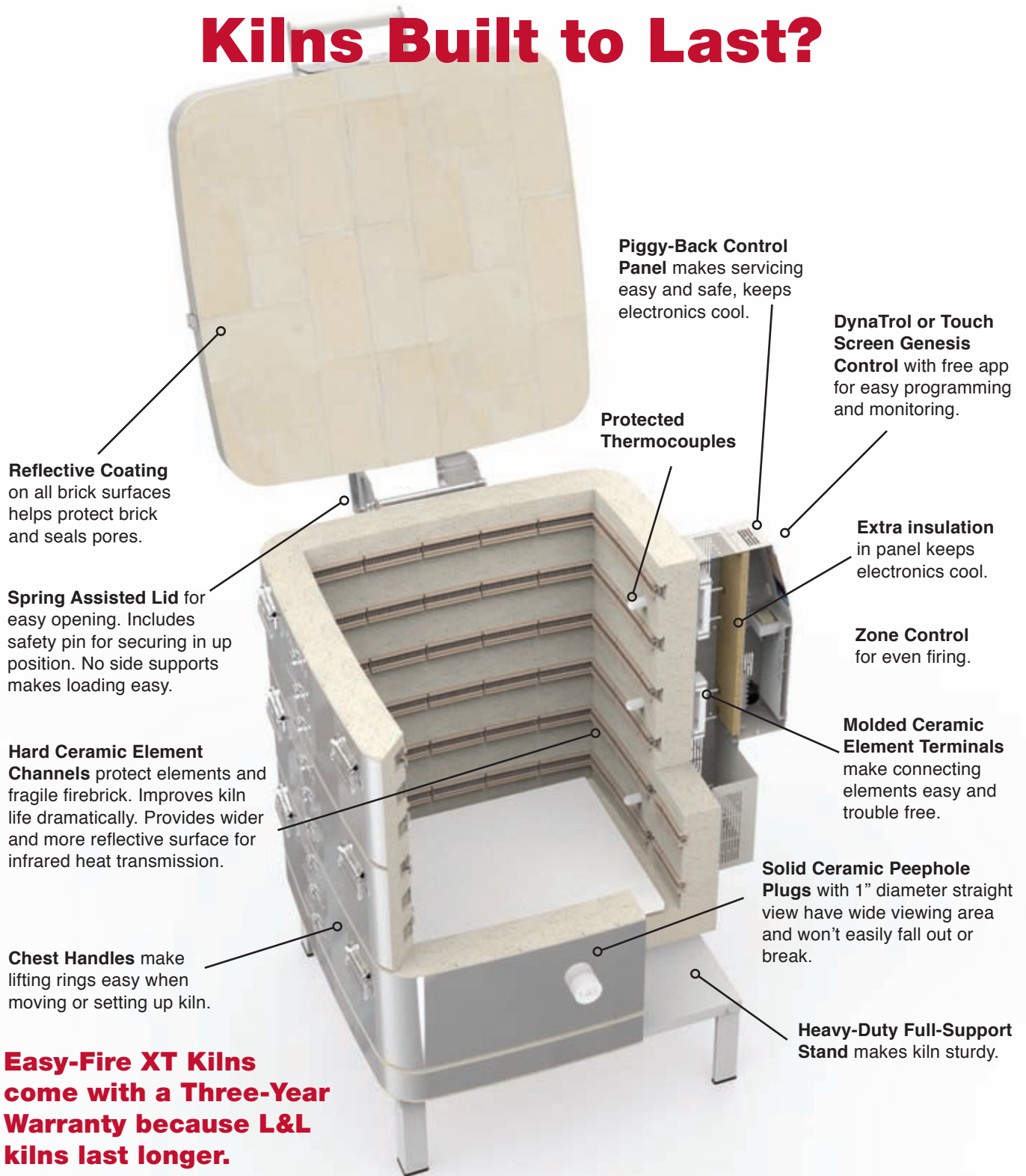
### FURNITURE KIT FOR e2327-XT

**Part Number:** H-X-K327/00

**Includes:** Six 20" X 10" Rectangular Shelves (3/4" thick), Six Each 1/2", 1", 2", 4", 6", and 8" Square Posts, Heat Resistant Gloves.



# What Makes Easy-Fire-XT Kilns Built to Last?



**Reflective Coating** on all brick surfaces helps protect brick and seals pores.

**Spring Assisted Lid** for easy opening. Includes safety pin for securing in up position. No side supports makes loading easy.

**Hard Ceramic Element Channels** protect elements and fragile firebrick. Improves kiln life dramatically. Provides wider and more reflective surface for infrared heat transmission.

**Chest Handles** make lifting rings easy when moving or setting up kiln.

**Easy-Fire XT Kilns come with a Three-Year Warranty because L&L kilns last longer.**

**Piggy-Back Control Panel** makes servicing easy and safe, keeps electronics cool.

**Protected Thermocouples**

**DynaTrol or Touch Screen Genesis Control** with free app for easy programming and monitoring.

**Extra insulation** in panel keeps electronics cool.

**Zone Control** for even firing.

**Molded Ceramic Element Terminals** make connecting elements easy and trouble free.

**Solid Ceramic Peephole Plugs** with 1" diameter straight view have wide viewing area and won't easily fall out or break.

**Heavy-Duty Full-Support Stand** makes kiln sturdy.



505 Sharptown Road • Swedesboro, NJ 08085  
Phone: 856.294.0077 • Fax: 856.294.0070  
sales@hotkilns.com • hotkilns.com

**KILNS BUILT TO LAST**

Bulletin No: XT-0520