

# Fuego International Craft Kilns

This is the perfect kiln for international use on 13 or 15 amp 220 volt circuits. It is the largest kiln for those circuits that reaches Cone 10.

- 45.7 cm (18") High  
34.3 cm (13.5") Diameter  
43 Liters (1.5 Cubic Feet)
- Hard Ceramic Element Holders protect brick and make element changes fast and easy
- Made for home use on international 13 or 15 amp 220 volt circuits
- One-Touch Control for Simplicity
- Protected Thermocouple
- Door Shut-Off Safety Switch meets CE Requirements
- Super-Strong Aluminized Steel Stand
- Extra Vent Hole in lid for manual venting
- For Hobbyists and Small Format Potters



## Unique L&L Features with Lasting Benefits

### CONE 10 TEMPERATURE RATING

Cone 10, 1290°C, 2350°F

### EXTRA INSULATION

7.6 cm (3") firebrick backed up with 3 mm (1/8") of ceramic fiber paper (Biodegradable ceramic fiber which meets European CE requirements).

### PATENTED CERAMIC ELEMENT HOLDERS

Protect brick from loading damage, keep elements from falling out of grooves, make changing elements easy, and optimise heat transfer to load. Kiln lasts longer! No pins. ([hotkilns.com/ceramic-holders](http://hotkilns.com/ceramic-holders))



### HEAVY-DUTY LARGE ELEMENTS

Four heavy-duty elements.

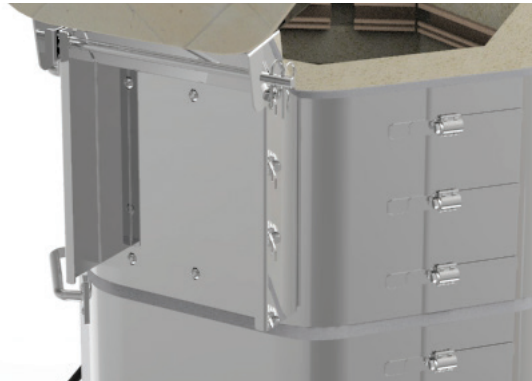
### EXTRA CASE CLAMPS

Stainless worm gear case clamps keep case together and allow for adjustment over time. Three per 9" section and two on the top and bottom. ([hotkilns.com/case-clamps](http://hotkilns.com/case-clamps))

### HINGE INTEGRATED IN CONTROL PANEL

Chains secure the lid in place when open.

([hotkilns.com/simple-hinge](http://hotkilns.com/simple-hinge))



### SEPARATED COOL-FIRING CONTROL PANEL

All controls and components are mounted in a separate control panel that is piggy-backed to the element connection box. In addition a layer of insulation keeps the controls cool - which is critical for long term health of the electronics.

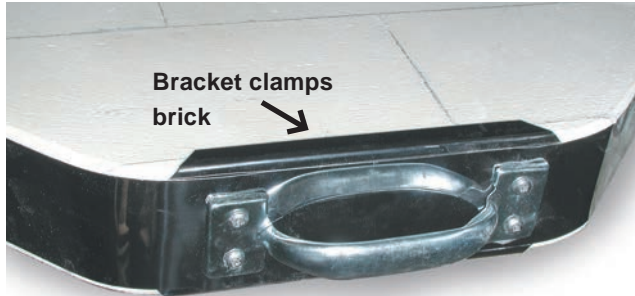
### THE POSITIVE DOOR INTERLOCK SWITCH

Features a strong mechanical latch that must be turned before the door can be opened. The turning of this latch breaks all power to the kiln as if you had used an external power disconnect switch or pulled the power cord from its socket. Meets European Directives. ([hotkilns.com/door-interlock](http://hotkilns.com/door-interlock))



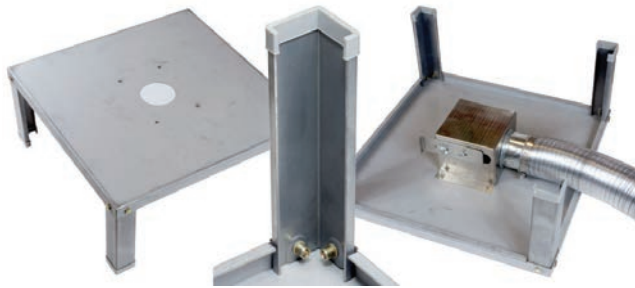
## LID BRICK IS SECURED WITH CLIPS

Stainless Steel clips secure lids - not friction.  
([hotkilns.com/lid-clips](http://hotkilns.com/lid-clips))



## HEAVY-DUTY FULL-SUPPORT STAND

Heavy-duty 14 gauge solid stand with multiple bends for strength. Bolt on legs. Feet protectors included. Optional Vent Bypass Collection Box bolts onto bottom of stand with included studs.  
([hotkilns.com/full-stand](http://hotkilns.com/full-stand))



## EASY ASSEMBLY WITH SECTIONAL CONSTRUCTION

Two 9" high sections for a total height of 18". Kiln comes assembled but can easily be taken apart for moving. Stainless steel wrapped around brick with 3 adjustable clamps. All corrosion resistant stainless screws are used in the case construction.  
([hotkilns.com/sectional-craft](http://hotkilns.com/sectional-craft))

## CORROSION RESISTANT CONSTRUCTION

Stainless steel wrapped around brick. All stainless screws on case. Stand is galvanized. Hinge is stainless steel. Control box is powder coated steel.  
([hotkilns.com/case](http://hotkilns.com/case))

## SOLID PEEPHOLE PLUGS

Solid (non-fragile) ceramic plug with heat-locked mushroom head. 1" diameter full-view non-tapered. There are two in the kiln body and one in the center of the lid for venting  
([hotkilns.com/peephole-plugs](http://hotkilns.com/peephole-plugs))



## ONE-TOUCH PROGRAM

Control: One-Touch™ Intuitive Kiln Control easily fires bisque and glaze programs. It is also easy to adjust simple parameters like cone, delay, hold, heat-up and cool-down rates. There are also four custom ramp/hold programs with 8 segments each.  
([hotkilns.com/one-touch](http://hotkilns.com/one-touch))



## MERCURY FREE RELAYS

Mercury free relays are standard.

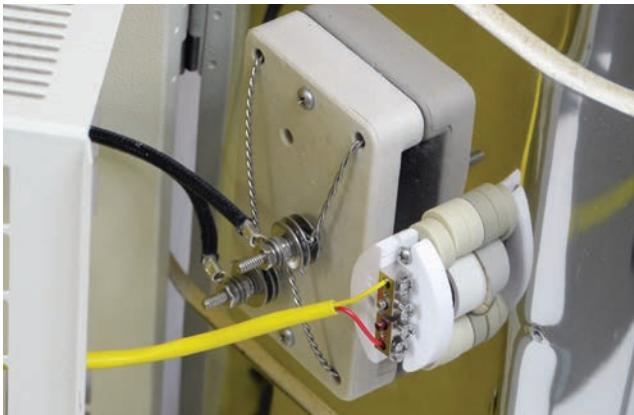
## POWER CORD & PLUG INCLUDED

See page 6 for details.

## CERAMIC ELEMENT CONNECTIONS

Proprietary all-ceramic element connection block makes changing elements easy.

([hotkilns.com/ceramic-terminal](http://hotkilns.com/ceramic-terminal))



## HEAVY-GAUGE TYPE K THERMOCOUPLES

Type K 8 gauge thermocouple is protected by an open ceramic protection tube. This allows the thermocouple to accurately read the kiln temperature but protects the delicate tip of the thermocouple from damage while loading. Also any metallic flakes from the thermocouple will tend to drop inside the tube where they can be vacuumed out during normal maintenance. ([hotkilns.com/protected-thermocouples](http://hotkilns.com/protected-thermocouples))



## COMPLETE VISUAL INSTRUCTIONS

No one has a better or more complete instruction manual. Our visual instructions address the needs of the artist, the installer, and the repair person. You get a fully illustrated operation and service

manual. Many instructional videos are available. ([hotkilns.com/videos](http://hotkilns.com/videos))

## L&L KILNS ARE EASY TO TROUBLESHOOT

Open up any L&L kiln control panel and see how easy it is to check amps, element resistance, and voltage. No other kiln can be serviced as quickly, easily, or inexpensively as an L&L kiln.

## THREE-YEAR LIMITED WARRANTY

See [hotkilns.com/warranty](http://hotkilns.com/warranty). Email, web and phone support.

## IN-DEPTH SUPPORT

One customer said: "I am truly impressed with your website, it is more than informative and your products are well designed. The fact that all the information, including repair manuals, are listed, speaks well of your dedication to customer service." Our website has thousands of pages of technical help - all easily searchable - plus we provide expert support with phone and email.

## SUSTAINABLE MANUFACTURING

We use solar energy as our primary energy source.

## SUPERIOR PACKAGING

Kilns are securely packed with custom foam moulds that dramatically reduce shipping damage. Kilns are shipped in skidded cartons on ISPM-15 certified skids.

## MET UL499 LISTING



c-MET-us listed to USA UL499 standards assures highest safety standards. ([hotkilns.com/met](http://hotkilns.com/met))



Stop worrying about loading your kiln! Load with confidence. You won't damage the fragile firebrick, touch dangling elements, or damage the protected thermocouples.

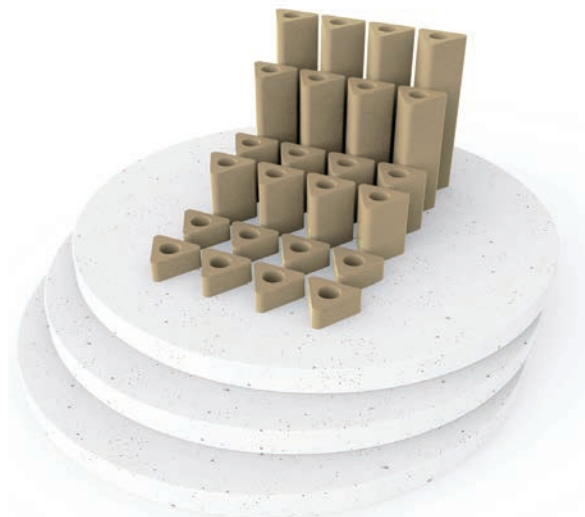
Elements can be changed in minutes without damaging the firebrick. NO PINS!

## Accessories

### CONE 11 FURNITURE KIT

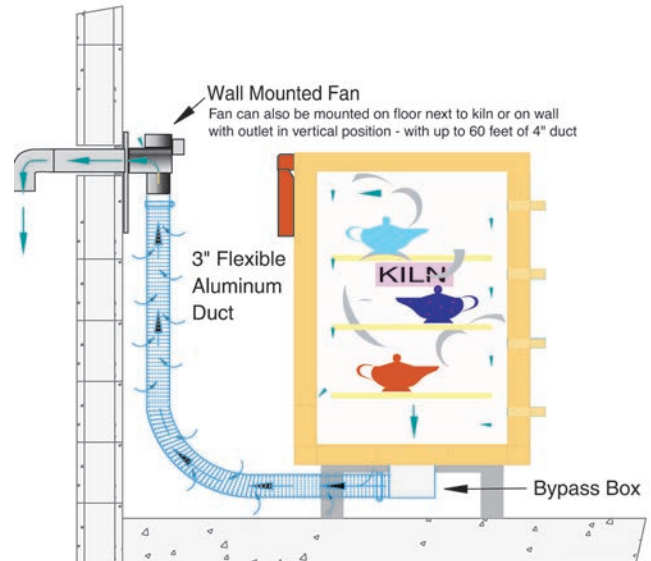
Three 30.5 cm (12") full round shelves, Small Triangular Ceramic Posts (2.5 cm / 1" on each side): plus Small Triangular Ceramic Post Kit (1" on each side): Four each of 1-1/2", 3" and 4", Eight 1-1/2" high and 1/2" high.

([hotkilns.com/kiln-furniture](http://hotkilns.com/kiln-furniture))



### DOWNDRAFT VENT SYSTEM

Vent-Sure downdraft vent vents fumes from kiln out of room and away from kiln. ([hotkilns.com/vent](http://hotkilns.com/vent))



## Dimension & Weight Specifications

**Inside Dimensions:** 34.3 cm (13.5") diameter by 45.7 cm (18") high, 7 sides

**Outside Dimensions:** 23" (58 cm) Wide by 27" (69 cm) Deep by 51" (130 cm) High

**Volume:** 43 Liters (1.5 cubic feet)

**Shipping Dimensions:** 92 cm (36") Wide by 92 cm (36") Deep by 130 cm (51") High (with or without Furniture Kit)

**Shipping Weight:** 91 Kg (200 lbs) for kiln. 107 Kg (235 lbs) for kiln with furniture kit.

**Moving and installation:** This kiln comes assembled but can be quickly disassembled and reassembled to move through any door or up stairs. It comes packed in a skidded carton with secure foam-in-place packaging.

**MORE:** See each model page on [hotkilns.com](http://hotkilns.com) to download PDF General Dimension Drawings for more outside and inside dimensions, minimum space requirements, BTU ventilation requirements, and kiln weight. See the Shipping Tab on the model page for complete shipping dimension and shipping weight information.

**Moving and installation:** The kiln comes assembled but can be quickly disassembled and reassembled to move through any door or up stairs. It comes packed in a skidded carton with secure foam-in-place packaging.

## Electrical Specifications

Model Numbers	Part Number	Volt/ Phase	Watts	Amps	Wire Size	Fuse Size	Power Connection
F1418-3-230-UK	K-F-1418/4K	230/1P	3,000	14.0	14 ga	15 Amp	UK Cord
F1418-3-220	K-E-148B/4E	220/1P	3,300	15.0	14 ga	15 Amp	EU Cord
F1418-3-240-AU	K-E-1488/4A	240/1P	3,600	15.0	14 ga	15 Amp	AU Cord

**CE:** These kilns are CE certified for use in Europe and the UK if bought through a UK or European distributor.

**Volts, Watts and Amps:** Fuego kilns are designed to operate on the voltage and and amperage of typical household current in each country. Because there are so many it is impossible to list all the possibilities.

**Plug:** Kiln plugs into an appropriate household circuit.

**Examples:** In the UK, Hong Kong, and Singapore the amperage is limited to 13 amps, voltage is 220-240 and watts is approximately 3000. In most of Europe amperage is limited to 15 amps, voltage is 220-240 and watts is approximately 3450. In Australia the amperage is limited to 15 amps, the voltage is 240 and the watts are approximately 3600.

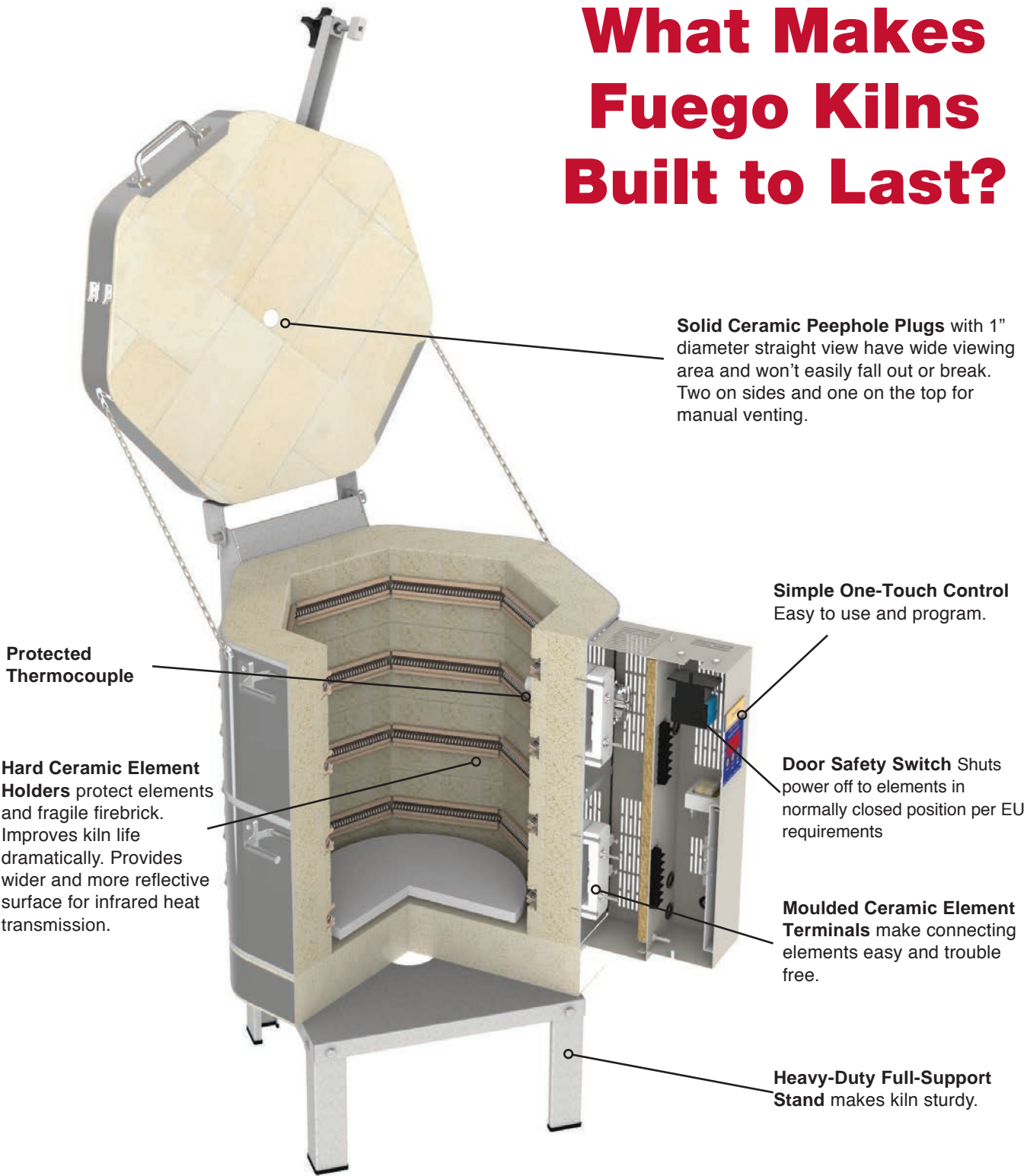
**Cone Rating:** All models are rated to Cone 10.

**Wiring Diagrams:** See the **Electrical Tab** at [hotkilns.com/fuego-world](http://hotkilns.com/fuego-world) to get the wiring diagram for each voltage.

**Elements:** All elements are of equal resistance value. Quad elements are the same resistance but longer and thicker.



# What Makes Fuego Kilns Built to Last?



**Solid Ceramic Peephole Plugs** with 1" diameter straight view have wide viewing area and won't easily fall out or break. Two on sides and one on the top for manual venting.

**Simple One-Touch Control**  
Easy to use and program.

**Protected Thermocouple**

**Hard Ceramic Element Holders** protect elements and fragile firebrick. Improves kiln life dramatically. Provides wider and more reflective surface for infrared heat transmission.

**Door Safety Switch** Shuts power off to elements in normally closed position per EU requirements

**Moulded Ceramic Element Terminals** make connecting elements easy and trouble free.

**Heavy-Duty Full-Support Stand** makes kiln sturdy.

**Fuego Kilns come with a Three-Year Warranty because L&L kilns last longer.**



505 Sharptown Road • Swedesboro, NJ 08085  
Phone: 856.294.0077 • Fax: 856.294.0070  
sales@hotkilns.com • hotkilns.com

**KILNS BUILT TO LAST**

Bulletin No: FGW-0722