

# XB3218 Series - Major Specifications

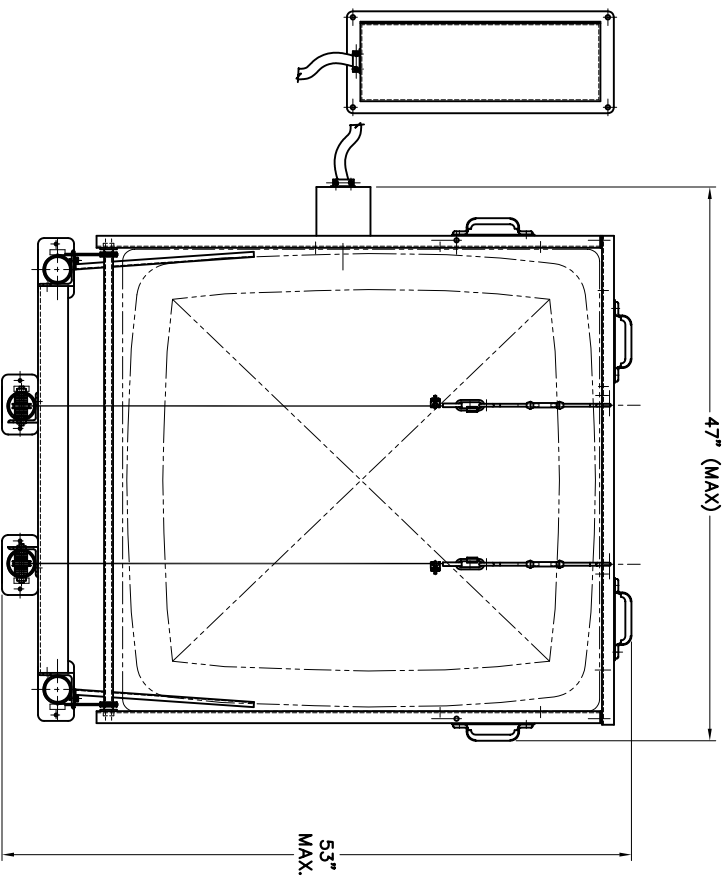
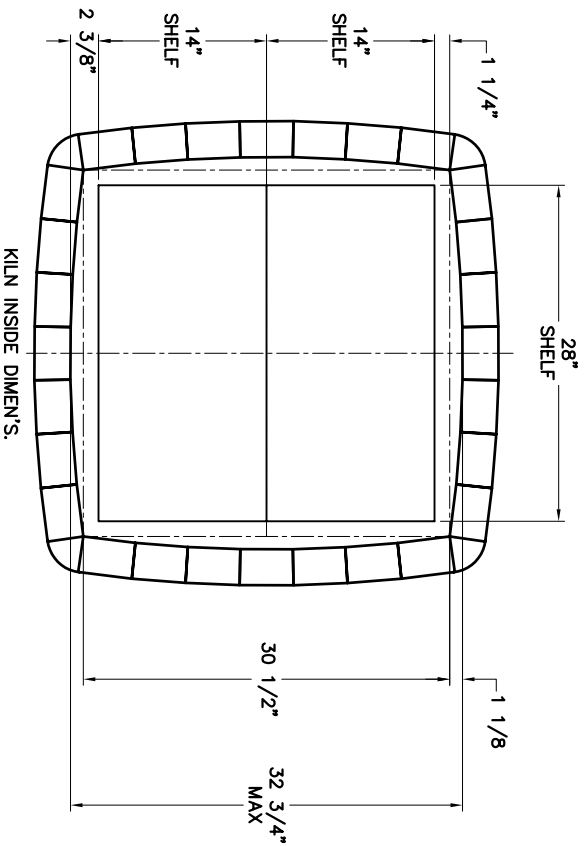
Cubic Feet: 10.0  
 Ship Weight: 1180 lbs, with Furniture Kit: 1280 lbs

## XB3218 (Standard KW)

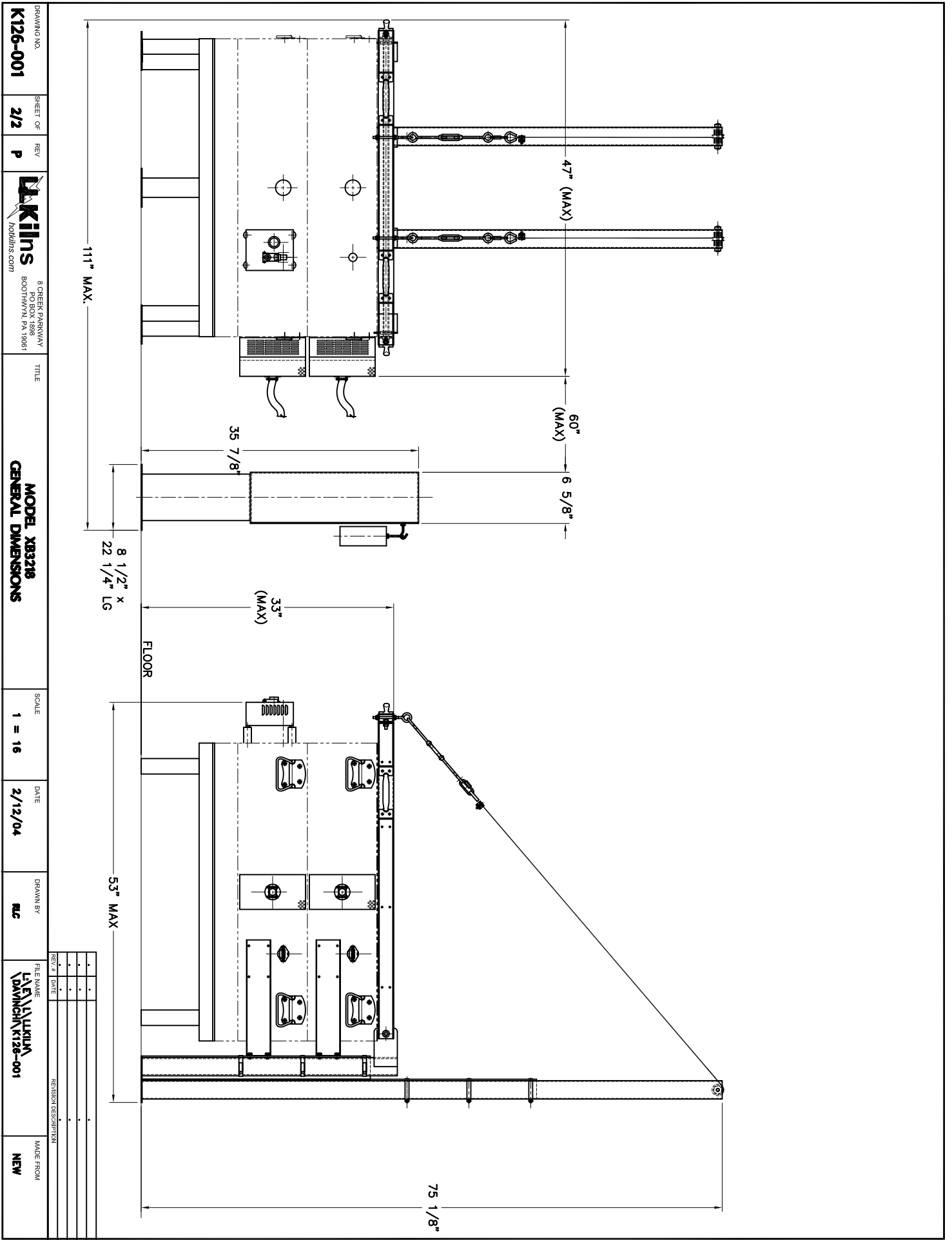
KW: 14.20	Full Load Amps	Fuse Amps	Hook-up Wire Size	UL Listing
240 Volts 1 Phase	59.2	80	3	Yes
240 Volts 3 Phase	51.2	70	4	Yes
208 Volts 1 Phase	68.3	90	2	Yes
208 Volts 3 Phase	59.1	80	3	Yes
220 Volts 1 Phase	64.5	80	3	Yes
380 Volts 3 Phase Wye				No
480 Volts 3 Phase				No

## XB3218-PB (Standard KW with Powered Bottom)

KW: 18.93	Full Load Amps	Fuse Amps	Hook-up Wire Size	UL Listing
240 Volts 1 Phase	78.9	100	1	Yes
240 Volts 3 Phase	51.2	70	4	Yes
208 Volts 1 Phase	91	125	*1/0	Yes
208 Volts 3 Phase	59.1	80	3	Yes
220 Volts 1 Phase	86.0	125	*1/0	Yes
380 Volts 3 Phase Wye				No
480 Volts 3 Phase				No



DRAWING NO. <b>K126-001</b>	SHEET OF <b>1/2</b>	REV <b>P</b>	 8 OBER PARKWAY PO BOX 1888 BOOTHWYN, PA 19061	TITLE <b>MODEL XB3218 GENERAL DIMENSIONS</b>	SCALE <b>1 = 16</b>	DATE <b>2/12/04</b>	DRAWN BY <b>RC</b>	FILE NAME L:\E\LD\KILN\DAVINCKILN\K126-001	MADE FROM <b>NEW</b>
--------------------------------	------------------------	-----------------	---	---	------------------------	------------------------	-----------------------	---	-------------------------



DRAWING NO. **K126-001**

SHEET OF **2/2**

REV **P**

**L. ELLIOTT KILN**  
haskins.com

8 OBER PARKWAY  
PO BOX 1888  
BOOTHWYN, PA 19061

TITLE  
**MODEL XB3218  
GENERAL DIMENSIONS**

SCALE  
**1 = 16**

DATE  
**2/12/04**

DRAWN BY  
**RC**

FILE NAME  
**L:\ELLKILN\DAVINCH\K126-001**

MADE FROM  
**NEW**

REV. #	DATE	REVISION DESCRIPTION