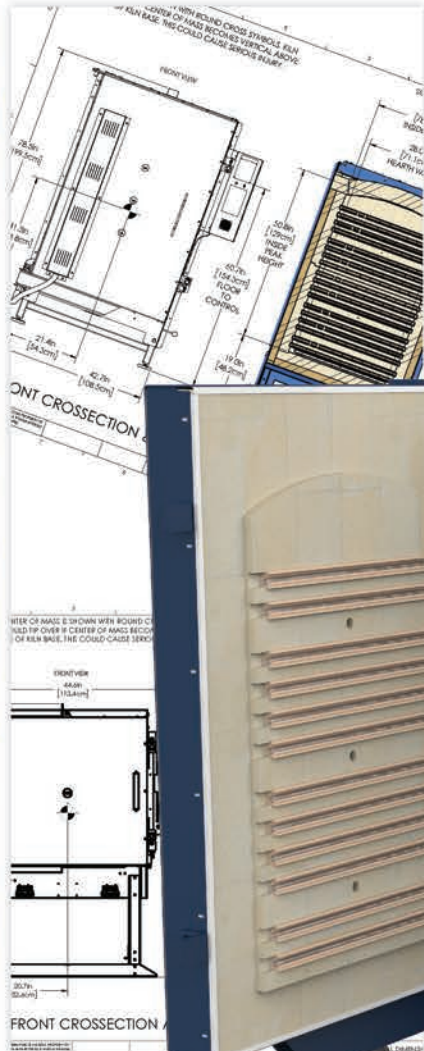




INDUSTRY

CATALOG 2023



L&L Kiln Mfg Inc
505 Sharptown Rd
Swedesboro, NJ 08085

Toll Free: 800-750-8350
Phone No: (856) 294-0077
Email: info@hotkilns.com



Improve Your Process With L&L Kilns

As a manufacturer, we understand that reliable equipment is critical to producing high-quality products. When it comes to finding an electric kiln solution, L&L is the clear choice. We understand the challenges you face in your production process, such as downtime, inconsistent results, and the need for durable equipment. We're here to help you overcome these challenges and take your production to the next level with our electric kilns. Our team of experts understands the unique demands of manufacturing and is committed to providing you with a solution that meets your specific needs.

L&L offers superior solutions:

Customizable Options:

We offer a wide range of electric kilns that can be customized to meet your specific needs, including size, temperature range, and control options.

Hard Ceramic Channels:

Our kilns are designed with hard ceramic channels that protect the kiln interior and elements, ensuring durability and longevity.

Consistent And Reliable Results:

Multi-zone heat controls and Quad element options offer superior heat control and distribution.

Comprehensive Support:

We offer comprehensive support, including video walkthroughs for maintenance how tos, a large online database of FAQs and a network of kiln experts to keep your equipment running smoothly and efficiently.

Industrial Applications

**Sintering Powdered Metals
& Ceramics**

Technical Ceramics

Superconductors

Ceramic Coatings

Piezoelectric Ceramics

Ceramic Armour

Ceramic Filters

Tile Manufacturing

Sanitary Ware

Ceramic Catalysts

Refractory Testing

Calcining

Fusing

Enameling

Annealing

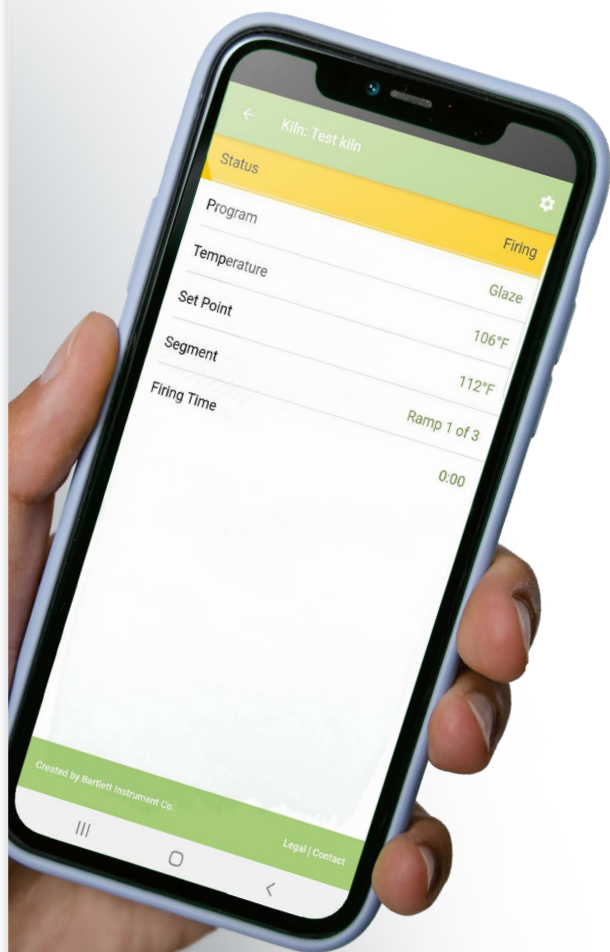
Heat-Treating

Weld Pre-Heating



TOUCH SCREEN INCLUDED ON ALL MODELS

Simply download the Bartlett Kiln Aid app from your Google Play or Apple App Store, add your kiln, and begin monitoring your kiln from anywhere!



**Genesis Touch Screen
Control with Kiln Aid app**
NOW INCLUDED ON ALL L&L KILNS



We can also supply special industrial controls from Eurotherm, Watlow, Future Design, Honeywell and others.

**Hard channels
protect the firebrick
- and make element
changes easy and
quick.**



**Enhances Heat Distribution
& Radiant Heat**

See How Easy!
Video: Changing Elements



hotkilns.com/change-elements-ez



**Ceramic Element Terminals
No Crimping or Special Tools**

FRONT LOADING KILNS



EFL SERIES KILNS

Studio Front-Loading Kilns

- Genesis Touch Screen Control • with Kiln Aid app
- Dynamic Zone Control • for even firing
- Hard Ceramic Element Channels • protect your elements and kiln
- Cone 10 (2350°F • 1290°C)
- Type K Thermocouples (3) • with protection tubes
- 3" • K23 Brick
- Front Loading
- Solid, Straight-View Peephole Plug
- Engineered Stand for Difficult Installations • optional casters
- Easy-Access Control Panel
- Three-Year Limited Warranty
- c-MET-us listed to UL499 Standards

EFL Series Front-Loading kilns. Include arched sides and top for strength, heat-balanced insulation for even firing, adjustable door with plug seal, and door switch.



FURNITURE KITS



VENT-SURE VENT SYSTEM



CASTER OPTIONS



Model Number	Number of Shelves	Cubic Feet	Hearth Height	Inside Dimensions	Exterior Dimensions	240/1 KW~Amp~Fuse	240/3 KW~Amp~Fuse	208/1 KW~Amp~Fuse	208/3 KW~Amp~Fuse	Lbs Kiln	Lbs w/Kit
eFL1626	(3) 14"x 24"	6.6	30"	17W x 26H x 26D	36W x 63H x 39D	11.5~48.0~60	12.5~30.1~40	*11.6~56.0~70	12.5~34.7~50	645	725
eFL2626	(6) 12"x 24"	10.2	30"	26W x 26H x 26D	45W x 63H x 39D	15.4~64.0~80	15.4~37.0~50	15.4~73.9~100	15.4~42.6~60	765	850
eFL2635	(8) 12"x 24"	13.7	30"	26W x 35H x 26D	45W x 72H x 39D	19.2~80.0~100	19.2~52.9~70	19.2~92.3~125	19.2~61.1~80	895	900

All models are rated to Cone 10. *A special model eFL1626-208-X is rated at Cone 5 but has 48.0 amps and a 60 amp fuse. Plugs on US Models only: 6-50P on single phase and 15-50P on three phase for all eFL1626 models except the standard eFL1626-208 1 Phase and 3 phase eFL2626 which needs to be direct wired. All other models are direct wired.

Moving: All models fit through a 31" wide by 75" high door (before re-assembly). All eFL kilns can be moved with a pallet-jack. **High-lift pallet-jack required for assembly and unloading off pallet.**

More: See Easy-Load Spec Sheets and Dimension Drawings on each kiln page on our website for more details.

Shipping: Protected with wood crate and foam-in-place packaging for shipment by Common Carrier. Fits on one 48x48" pallet. Ships from factory direct to customer.

Checklist: Fill out installation checklist prior to order: hotkilns.com/eFL-checklist.

Listings: cMET-us listed to UL499.



[hotkilns.com
/kiln-series
/eFL-series-kilns](http://hotkilns.com/kiln-series/eFL-series-kilns)



EASY-LOAD KILNS

Commercial Front-Loading Kilns

- **Genesis Touch Screen Control** • with Kiln Aid app
- **Dynamic Zone Control** • for even firing
- **Hard Ceramic Element Channels** • protect your elements and kiln
- **Cone 10** (2350°F • 1290°C)
- **Type K Thermocouples (3)** • with protection tubes
- **3" K23 Brick** • 2" of backup insulation and 4.5" K25 arched top
- **Front Loading**
- **Solid, Straight-View Peephole Plugs**
- **Welded, Powder-Coated Case/Frame**
- **Industrial Control Panel** • 480v optional
- **Two-Year Limited Commercial Warranty**
- **MET-us listed to UL499 Standards**

Commercial-grade front-loading kilns for production. Includes adjustable door with plug seal and fiberglass gasket, door elements, heavy-gauge welded case, 3" brick walls and base, 4.5" K25 arched brick top, 2" of backup insulation between firebrick and metal casing, door switch, and industrial panel with branch fusing.

FRONT LOADING KILNS



Request a quotation:
industry@hotkilns.com



FURNITURE KITS



VENT-SURE VENT SYSTEM



Model No.	Inside Dimensions	Cubic Feet	Hearth Size	Shelves Size	Hearth Height	KW	240/1 Amp~Fuse	240/3 Amp~Fuse	208/1 Amp~Fuse	208/3 Amp~Fuse	480/3 Amp~Fuse	Lbs Kiln	Lbs w/Kit
EL2424	25W x 25D x 24H	8.0	22" x 22"	(4) 11" x 22"	30"	15.0	63.0~80	55.0~70	73.0~100	63.0~80	28.0~40	1075	1250
EL2427	25W x 25D x 27H	9.0	22" x 22"	(6) 11" x 22"	30"	15.0	68.8~90	39.6~50	79.3~100	45.7~60	19.8~25	1200	1450
EL2436	25W x 25D x 36H	12.0	22" x 22"	(8) 11" x 22"	30"	19.0	80.0~100	46.0~60	92.0~125	53.0~70	24.0~30	1350	1550
EL2448	25W x 25D x 48H	16.0	22" x 22"	(10) 11" x 22"	18"	24.2	101.0~125	59.0~80	117.0~150	68.0~90	30.0~40	1500	1750
EL2848	31W x 25D x 48H	20.0	28" x 24"	(12) 14" x 24"	18"	27.0	113.0~150	66.0~90	130.0~175	75.0~100	33.0~50	1750	2000
EL3048	31W x 32D x 48H	25.0	28" x 28"	(12) 14" x 28"	18"	31.5	132.0~175	76.0~100	152.0~200	88.0~125	39.0~50	2000	2300

Cone Rating: All models rated for Cone 10

Furniture Kit: Includes high-fire shelves listed above plus two Large Square Post Kits and insulated gloves for unloading. Power Hookup: Direct wired.

Moving: All the kilns except the EL3048 will go through a 34-1/2" wide by 75" high door. The EL3048 needs a minimum door size of 40-1/2" wide by 76" high. All Easy-Load kilns can be moved with a pallet-jack from any side, after its unloaded. **Forklift required for unloading off pallet.**

More: See eFL Spec Sheets and Dimension Drawings on each kiln page on our website for more details.

Shipping: Protected with wood crate, foam-in-place packaging, and special pallet cushions. Shipping by air-ride truck. Fits on one pallet. Ships from factory direct to customer.

Checklist: Fill out installation checklist prior to order: hotkilns.com/front-load-checklist.

Listings: MET-us listed to UL499.



hotkilns.com
/kiln-series
/easy-load-kilns



JUPITER KILNS

Modular & Highly Customizable



- **Genesis Touch Screen Control** • with Kiln Aid app
- **Dynamic Zone Control** • for even firing
- **Hard Ceramic Element Channels** • protect your elements and kiln
- **Cone 10** (2350°F • 1290°C) (most models)
- **Type K Thermocouples (2-3)** • with protection tubes
- **3" • K23 Brick**
- **Top Loading** • spring assisted lid (23" & 28" models)
- **Solid, Straight-View Peephole Plugs**
- **Full-Support Stand** • rolling option available
- **Plug-in Control Panel** • 480V optional
- **Three-Year Limited Warranty**
- **c-MET-us listed to UL499 Standards**

The unique plug-in control panel and extreme sectional construction make Jupiter kilns ideal for those who need flexibility.



FURNITURE KIT
See page 26



VENT SURE



ROLLING STAND

Model No.	Quad Elem	No. of Shelves F=full, H=half	Inside Diam	Inside Height	Cubic Feet	Cone Rating	240/1 KW~Amp~Fuse	240/3 KW~Amp~Fuse	208/1 KW~Amp~Fuse	208/3 KW~Amp~Fuse	Lbs Kiln	Lbs w/Kit
JD230V-3	OPTIONAL	20" (8H)	22.3"	27"	6.7	10	10.6~44.0~60	10.6~25.4~40	9.1~44.0~60	9.1~25.4~40	385	470
JD236V-3	OPTIONAL	20" (10H)	22.3"	36"	8.9	10	14.1~58.6~80	14.1~38.1~50	12.2~58.6~80	12.2~38.1~50	460	545
JD245V-3	OPTIONAL	20" (12H)	22.3"	45"	11.1	10	17.6~73.3~100	17.6~50.8~70	15.2~73.3~100	15.2~50.8~70	540	650
JD2927-3	OPTIONAL	25.5" (8H)	28"	27"	10.2	10	13.7~57.0~80	13.7~32.9~50	12.5~60.0~80	12.5~34.6~50	450	575
JD2936-3	OPTIONAL	25.5" (10H)	28"	36"	13.6	10	18.2~76.0~100	18.2~49.3~70	16.6~80.0~100	16.6~52.0~70	565	715
JD2945-3	OPTIONAL	25.5" (12H)	28"	45"	17.0	10	22.8~95.0~125	22.8~65.8~90	20.8~100.0~125	20.8~69.3~90	645	820

Note About EZ Models: All the JD2300 series are available with higher watts "EZ" elements (the same elements used in the e23T kilns) at no extra charge. See web and specification sheet for details.

Cone Rating: See above chart. More: See Jupiter Spec Sheets and General Dimensions on each kiln page on our website for more details.

Power Hookup: Plugs (6-50 for single phase and 15-50 for three phase) are included on kilns that have less than 48 amps, otherwise direct wired. All non-USA models are direct wired.

Listings: cMET-us listed to UL499 (standard models only)



SPECIAL SIZES AND CONFIGURATIONS

Special large sectional kilns for superconducting ceramics

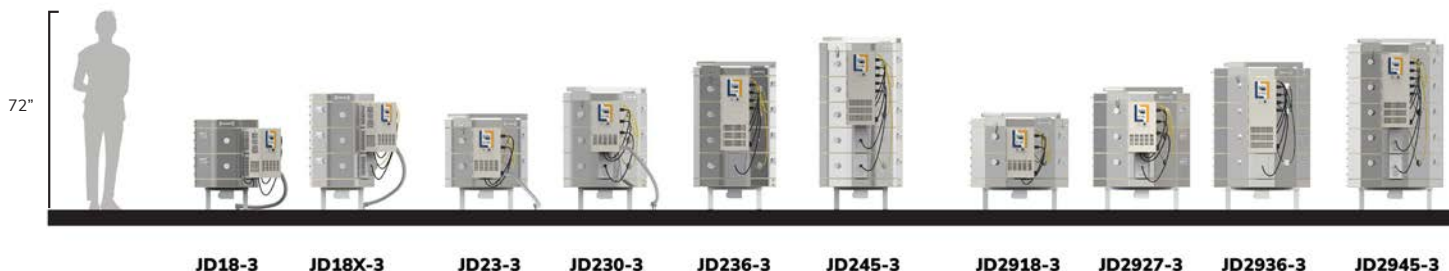


SEPARATE PLUG-IN CONTROL PANEL

The control panel is separate from the kiln. Keeps controls and relays cool. All sections plug into it. Hinged and removable for easy maintenance.

VOLTAGE

208 or 240 volts, single or three phase, or international voltages. KW, amperage, and fuse size for each voltage below. No charge except for 480 volts.





EASY-FIRE KILNS

Standard Kilns



- **Genesis Touch Screen Control** • with Kiln Aid app
- **Dynamic Zone Control** • for even firing
- **Hard Ceramic Element Channels** • protect your elements and kiln
- **Cone 10** (2350°F • 1290°C) • most models
- **Type K Thermocouples (2-3)** • with protection tubes
- **3" • K23 Brick**
- **Top Loading** • spring assisted lid (23" & 28" models)
- **Solid, Straight View Peephole Plugs**
- **Full-Support Stand** • rolling option available
- **Easy-Access Control Panel** • with Easy-View tilted display
- **Three-Year Limited Warranty**
- **c-MET-us listed to UL499 Standards**

This is the classic L&L kiln used by most of our customers. They include all the signature L&L features.



FURNITURE KITS



VENT-SURE VENT SYSTEM



ROLLING STAND



Model No.	Quad Elem	No. Shelves F=full, H=half	Inside Diam	Inside Height	Cubic Feet	Exterior Dim (in)	240/1 KW~Amp~Fuse	240/3 KW~Amp~Fuse	208/1 KW~Amp~Fuse	208/3 KW~Amp~Fuse	Lbs Kiln	Lbs w/Kit
e14S-3	S/O	12" (3 Full)	13.5"	18"	1.5	23W x 51H x 27D	3.8~16~20	no 3 phase	3.8~18.5~25	no 3 phase	150	175
e18S-3	S/O	15" (1F, 4 Half)	16.5"	18"	2.5	28W x 55H x 30D	5.7~23.9~30	5.7~20.7~30	5.0~23.9~30	5.0~20.8~30	235	285
e18M-3	S/O	15" (1F, 4 Half)	16.5"	22.5"	3.2	28W x 60H x 30D	8.0~33.3~50	8.0~23.1~30	8.0~38.5~50	8.0~26.6~40	260	310
e18T-3	S/O	15" (2F, 4 Half)	16.5"	27"	3.7	28W x 63H x 30D	8.4~35.0~50	8.4~20.2~30	8.4~40.4~60	8.4~23.3~30	280	340
e23S-3	\$	20" (6 Half)	22.3"	18"	4.4	30W x 59H x 40D	9.5~39.4~50	9.5~34.1~50	8.3~40.0~50	8.3~34.6~50	320	395
e23M-3	\$	20" (6 Half)	22.3"	22.5"	5.5	30W x 63H x 40D	11.5~48.0~60	11.5~33.3~50	10.0~48.0~60	11.5~38.4~50	350	425
e23T-3	\$	20" (8 Half)	22.3"	27"	6.7	30W x 68H x 40D	11.5~48.0~60	11.5~27.7~40	10.0~48.0~60	11.0~30.5~40	380	470
e28S-3	\$	25-1/2" (6 Half)	28"	18"	6.8	35W x 65H x 46D	11.5~47.9~60	11.5~41.5~60	10.0~48.0~60	10.0~41.6~60	410	520
e28M-3	\$	25-1/2" (6 Half)	28"	22.5"	8.5	35W x 69H x 46D	11.5~48.0~60	16.6~40.0~50	10.0~48.0~60	14.3~39.8~50	445	555
e28T-3	\$	25-1/2" (8 Half)	28"	27"	10.2	35W x 74H x 46D	11.5~48.0~60	16.6~40.0~50	10.0~48.0~60	14.3~39.8~50	475	610

S/O means Special Order: Contact factory for availability, price and lead time.

Cone Rating: All models are rated to Cone 10 except the single phase e28T-3 (rated to Cone 8 at 240V/1 Phase, Cone 5 at 208V/1 Phase, but Cone 10 for any 3 phase kiln) and the e28M-3 (rated at Cone 8 for 208V/1 phase). If planning continuous Cone 6 firings, or above, we recommend the eQuad-Pro eQ2827-3 or the Jupiter JD2927-3 (both have more KW than the e28T-3 in their single phase versions).

Power Hookup: (USA only) 6-50P plug on single phase and 15-50P plug on three phase except for the e14S-3 which has a 6-20P Plug for 240 volt models or a 14-30P Plug for 208 volt models.

UL 499 Listing: c-MET-us listed to UL499 standards. **CE Listing:** CE Listed models are available.

More: See Easy-Fire Spec Sheets and Dimension Drawings on each kiln page on our website for more details.

EQUAD-PRO KILNS

Super-Duty High Production Kilns



- **Genesis Touch Screen Control** • with Kiln Aid app
- **Dynamic Zone Control** • for even firing
- **Hard Ceramic Element Channels** • protect your elements and kiln
- **Cone 10 (2350°F • 1290°C)** • with extra power
- **Type K Thermocouples (3)** • with protection tubes
- **3" • K23 Brick**
- **Top Loading** • spring assisted lid
- **Solid, Straight View Peephole Plugs**
- **Full-Support Stand** • rolling option available
- **Easy-Access Control Panel** • branch fusing included
- **Three-Year Limited Warranty**
- **c-MET-us listed to UL499 Standards**
- **Quad Element System Comes Standard**

25% Extra power and Quad element system make eQuad-Pro kilns ideal for Production.

EQUAD-PRO KILNS



FURNITURE KITS



VENT-SURE VENT SYSTEM



ROLLING STAND



QUAD ELEMENT SYSTEM INCLUDED

The element channels glow and disperse the radiant heat. The large diameter elements (both of the wire gauge and outside diameter of the element coil), coupled with the unique glowing feature of the hard dense ceramic element channels make these elements last for a very long time.

(hotkilns.com/quad-elements)

Optional APM Elements: See hotkilns.com/apm for pricing.

Voltage: Order 240 or 208 volts, single or three phase, or international voltages. KW, amperage, and fuse size for each voltage below. 480 volts is not available. No charge for any voltage options.

Vent-Sure (120 volts)
(M-V-VENT/00)

Vent Doubler
(M-V-VENT/DB)

Vent Control
(M-V-CNTL/00)

SSR Power Control for
eQ2327-3 & eQ2827-3

SSR Power Control for
eQ2836-3

High Limit Back Up Control
(N-G-PKHL/00)

Back up Contactors Three-Section Kilns
(N-G-BCJ3/00)

Back up Contactors Four-Section Kilns
(N-G-BCJ4/00)

Type S Platinum Thermocouples
(T-G-SJUP/UG)

Pyrocl metallic Thermocouples
(T-G-E23M/UG)

Model No.	No. of Shelves All Half Shelves	Inside Diam	Inside Height	Cubic Feet	Exterior Dimensions	240/1 KW~Amp~Fuse	240/3 KW~Amp~Fuse	208/1 KW~Amp~Fuse	208/3 KW~Amp~Fuse	Lbs Kiln	Lbs w/Kit
eQ2327-3	20" (8 Half)	22.3"	27"	6.7	30W x 69H x 40D	13.4~56.0~70	13.4~32.4~50	11.7~56.0~70	11.7~32.4~50	395	485
eQ2827-3	25.5" (8 Half)	28"	27"	10.2	35W x 74H x 49D	15.0~62.3~80	15.0~36.0~50	15.0~71.9~90	15.0~41.5~60	515	650
eQ2836-3	25.5" (10 Half)	28"	36"	13.6	35W x 83H x 49D	19.0~79.2~100	19.0~51.5~70	19.0~91.3~125*	19.0~60.4~80	605	770

***Note:** Special model eQ2836-X-208-1P is available with 16.6 KW, 208 Volt/1 Phase, 80 amps for a 100 amp fuse.

Cone Rating: All models rated for Cone 10 on a production basis due to extra power and Quad elements.

More: See eQuad Spec Sheets and Dimension Drawings on each kiln page on our website for more details. **Power Hookup:** All models are direct wired with no cords.

UL 499 Listing: c-MET-us listed to UL499 standards.



DAVINCI KILNS

Square & Rectangular Top-Loading Kilns



- **Genesis Touch Screen Control** • with Kiln Aid app
- **Dynamic Zone Control** • for even firing
- **Hard Ceramic Element Channels** • protect your elements and kiln
- **Cone 10 (2350°F • 1290°C)** • extra power optional
- **Type K Thermocouples (2-3)** • with protection tubes
- **3" • K23 Brick**
- **Top Loading** • spring assisted lid
- **Solid, Straight-View Peephole Plugs**
- **Full-Support Stand**
- **Industrial Plug-in Control Panel** • floor standing, 480v optional
- **Three-Year Limited Warranty**
- **c-MET-us listed to UL499 Standards**

Large volume square and rectangular kilns with adjustable height. DaVinci kilns are great for production and tiles. Includes arched sides for strength and counterbalanced lid.

SSR Power Control for
2 Circuit Models

SSR Power Control for
3 Circuit Models

SSR Power Control for
4 Circuit Models

SSR Power Control for
5 Circuit Models

SSR Power Control for
6 Circuit Models

Type S Platinum Thermocouples
(T-G-SJUP/UG)

Pyrocl metallic Thermocouples
(T-G-E23M/UG)

High Limit Back Up Control
(N-G-PKHL/00)

Back up Contactors Two-Section Kilns
(N-G-BCX2/00)

Back up Contactors Three-Section Kilns
(N-G-BCX3/00)

Back up Contactors Four-Section Kilns
(N-G-BCX4/00)

Back up Contactors Five-Section Kilns
(N-G-BCX5/00)

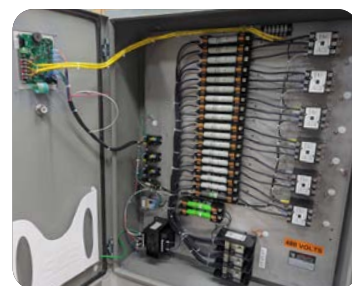
VOLTAGE & POWER OPTIONS

XB and TB elements, which have a higher KW rating, are available on the 27", 36" and 45" high DaVinci kilns.

High Power Option

NO CHARGE

Industrial-grade control panels



X-SERIES



XB2818

X2827

X2836

X2845

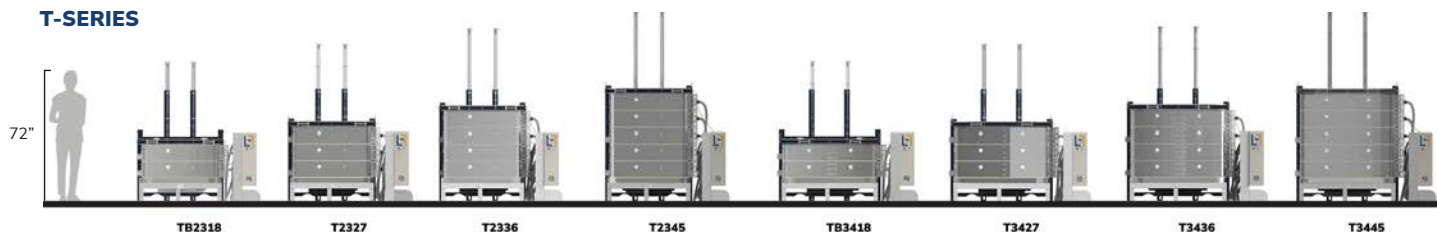
XB3218

X3227

X3236

X3245

T-SERIES



TB2318

T2327

T2336

T2345

TB3418

T3427

T3436

T3445



SPRING-HINGED COUNTERBALANCED TOP

Safety latch prevents lid from closing while loading. Design allows extra sections to be added and adjusted.



FURNITURE KITS



VENT-SURE VENT SYSTEM



Model No.	Power Botm	High Power	Quad Elem	Shelves in Furn Kit	Post Kits	Inside W x D	Inside Height	Cubic Feet	External Dimensions	Stand KW	High KW	240/1 Fuse	240/3 Fuse	208/1 Fuse	208/3 Fuse	Lbs Kiln	Lbs w/Kit
XB2818-D	N/A	N/A	OPTIONAL	(4) 24" x 12"	(1)	26.5" Square	18"	7.3	59W x 74H x 46D	11.6	N/A	60	60	70	60	800	915
X2827-D	N/A	N/C	OPTIONAL	(6) 24" x 12"	(1)	26.5" Square	27"	11.0	59W x 84H x 46D	14.9	17.4	80	50	90	60	825	930
X2836-D	N/A	N/C	OPTIONAL	(8) 24" x 12"	(2)	26.5" Square	36"	14.6	59W x 93H x 46D	19.9	23.2	100	70	125	80	910	1045
X2845-D	N/A	N/C	OPTIONAL	(10) 24" x 12"	(2)	26.5" Square	45"	18.3	59W x 102H x 46D	24.9	29.0	125	90	150	100	1045	1205
XB3218-D	OPTIONAL	N/A	OPTIONAL	(4) 28" x 14"	(1)	30.5" Square	18"	9.7	63W x 74H x 51D	14.2	N/A	80	70	90	80	800	915
X3227-D	OPTIONAL	N/C	OPTIONAL	(6) 28" x 14"	(1)	30.5" Square	27"	14.5	63W x 84H x 51D	18.0	21.3	100	60	125	70	1020	1170
X3236-D	OPTIONAL	N/C	OPTIONAL	(8) 28" x 14"	(2)	30.5" Square	36"	19.4	63W x 93H x 51D	24.4	28.4	125	80	150	100	1120	1310
X3245-D	OPTIONAL	N/C	OPTIONAL	(10) 28" x 14"	(2)	30.5" Square	45"	24.2	63W x 102H x 51D	30.5	35.5	175	125	200	125	1265	1495
TB2318-D	OPTIONAL	N/A	OPTIONAL	(6) 22" x 11"	(1)	26.5" x 34.75"	18"	9.6	68W x 72H x 47D	15.3	N/A	80	70	100	80	905	1005
T2327-D	OPTIONAL	N/C	OPTIONAL	(9) 22" x 11"	(1)	26.5" x 34.75"	27"	14.4	68W x 84H x 47D	19.5	23.0	100	60	125	70	1035	1170
T2336-D	OPTIONAL	N/C	OPTIONAL	(12) 22" x 11"	(2)	26.5" x 34.75"	36"	19.2	68W x 93H x 47D	26.0	30.7	125	90	150	100	1135	1315
T2345-D	OPTIONAL	N/C	OPTIONAL	(15) 22" x 11"	(2)	26.5" x 34.75"	45"	24.0	68W x 102H x 47D	32.5	38.4	175	125	200	125	1285	1500
TB3418-D	OPTIONAL	N/A	OPTIONAL	(6) 28" x 14"	(2)	30.5" x 43.5"	18"	13.8	76W x 72H x 53D	19.9	N/A	100	90	125	100	1065	1215
T3427-D	OPTIONAL	N/C	OPTIONAL	(9) 28" x 14"	(2)	30.5" x 43.5"	27"	20.7	76W x 84H x 53D	24.9	36.5	125	80	150	90	1215	1420
T3436-D	OPTIONAL	N/C	OPTIONAL	(12) 28" x 14"	(2)	30.5" x 43.5"	36"	27.6	76W x 93H x 53D	33.3	39.9	175	125	200	125	1340	1615
T3445-D	OPTIONAL	N/C	OPTIONAL	(15) 28" x 14"	(3)	30.5" x 43.5"	45"	34.6	76W x 102H x 53D	41.6	49.8	200	150	225	175	1505	1840

(N/A = Not available, N/C = No Charge)

Cone Rating: All models rated for Cone 10.

Power Hookup: Direct wired - no plugs.

More: See DaVinci Spec Sheets and Dimension Drawings on each kiln page on our website for more details.

Shipping: Protected with foam-in-place packaging for shipment by Common Carrier. Depending on the model there are either two or three crates. Some smaller models can ship in skidded cartons. Ships from factory direct to customer.

Listings: cMET-us listed to UL499.

CRATING OPTIONS

See hotkilns.com

[/kiln-accessories/packing-options-davinci-kilns](http://kiln-accessories/packing-options-davinci-kilns)

DAVINCI BELL-LIFT KILNS



- **Genesis Touch Screen Control** • with Kiln Aid app
- **Dynamic Zone Control** • for even firing
- **Hard Ceramic Element Channels** • protect your elements and kiln
- **Cone 10** (2350°F • 1290°C)
- **Type K Thermocouples (3)** • with protection tubes
- **3" • K23 Brick** • 4" ceramic fiber module roof
- **Bell-Lift System** • for loading from all 4 sides
- **Solid, Straight-View Peephole Plugs**
- **Welded Bell-Lift Frame** • easy to install with a forklift
- **Industrial Plug-in Control Panel** • floor standing, 480v optional
- **Two-Year Limited Commercial Warranty**
- **c-MET-us** listed to UL499 Standards (except for 54" high models)

Bell-Lift kilns are easy to load and great for industrial or high-production work. An option for a multi-car bottom and track system is available. Includes electric chain hoist.



Availability: DaVinci X3200-D & T3400-D Kiln Series. A special version exists that is 100 Cu-Ft (see next page).

How it Works: A hand-held dangle operates the electric chain hoist to lift the whole kiln up as a unit, exposing the bottom of the kiln for loading from all four sides. The kiln sections and top are held together as one unit with a metal support frame and stainless steel base. Four quick release pins lock the kiln in place when the kiln is fully raised, for added security while loading.

Construction: The heavy-gauge metal frame is welded, powder-coated, and constructed into two parts for shipping by common-carrier. The top and bottom-half can

be assembled on site in an hour by two to three people (forklift required). Unique DaVinci-kiln shape (shallow side arches) create strong sides and space for interior air circulation while firing. 9" high sections stack on top of each other and are held together with a cage of metal brackets and stainless steel bottom.

Control Panel: Floor mounted NEMA 1 panel separate from kiln. Kiln sections attached to panel with cords (custom lengths available). Mechanical contactors (SSR optional) with control relays. Branch fusing. Direct wired.

Model No.	Power Bottom	Shelves in Furn Kit	Post Kits	Inside W x D	Inside Height	Cubic Feet	External Dimensions	Stand KW	High KW	240/1 Fuse	240/3 Fuse	208/1 Fuse	208/3 Fuse	Lbs Kiln	Lbs w/Kit
X3227-BL	AVAIL	6) 28" x 14"	(1)	30.5" Square	27"	14.5	77W x 114H x 67D	18.0	21.3	100	60	125	70	1750	1900
X3236-BL	AVAIL	(8) 28" x 14"	(2)	30.5" Square	36"	19.4	77W x 132H x 67D	24.4	28.4	125	80	150	100	1885	2090
X3245-BL	AVAIL	(10) 28" x 14"	(2)	30.5" Square	45"	24.2	77W x 150H x 67D	30.5	35.5	175	125	200	125	2075	2325
X3254-BL	AVAIL	(10) 28" x 14"	(2)	30.5" Square	54"	29.1	77W x 168H x 67D	36.0	42.6	200	150	225	176	2140	2350
T3427-BL	AVAIL	(9) 28" x 14"	(2)	30.5" x 43.5"	27"	20.7	89W x 114H x 70D	24.9	36.5	125	80	150	90	1975	2205
T3436-BL	AVAIL	(12) 28" x 14"	(2)	30.5" x 43.5"	36"	27.6	89W x 132H x 70D	33.3	39.9	175	125	200	125	2225	2525
T3445-BL	AVAIL	(15) 28" x 14"	(3)	30.5" x 43.5"	45"	34.6	89W x 150H x 70D	41.6	49.8	200	150	225	175	2475	2850
T3454-BL	N/A	(15) 28" x 14"	(3)	30.5" x 43.5"	54"	41.5	89W x 168H x 70D	49.8	59.8	250	200	300	225	2445	2860

Cone Rating: All models rated for Cone 10.

Listings: cMET-us listed to UL499 with the exception of models X3254-BL, T3454-BL, and TB644754-BL.

Power Hookup: Direct wired - no plugs. You have a choice of standard or high power KW for no change in price.

Crating: Protected with wood crating and foam-in-place packaging for shipment by Common Carrier. There are two crates.

TB644754 BELL-LIFT KILN

100 Cubic Foot Industrial Kiln



- Based on the design of the smaller Bell-Lift kilns, but larger
- Voltage: 480/3P KW: 87.8
- Amps: 106, Fuse: 150 amps, Wire Size: 2/0
- Inside Dimensions: 66" W x 47"D x 54"H (100 cubic feet)
- Outside Dimensions: 86" W x 70" D x 168" H
- Space Requirements (for operation and maintenance): 155" W x 107" D x 180" H
- Ship Weight: 4000 lbs. Ships on a dedicated truck.

Request a quotation:
industry@hotkilns.com



TB644754 BELL-LIFT KILN



CUSTOM LARGE POLYGONAL, SQUARE & RECTANGULAR KILNS

LARGE SQUARE & RECTANGULAR KILNS

L&L designs and builds custom square and rectangular DaVinci kilns. Sizes are very flexible. The top is typically made of 4" thick ceramic fiber modules.

hotkilns.com/kiln-types/extra-large-square



Special Super-Insulated Kiln For Melting Glass

Industrial kilns are all by special quote and are only sold direct by the factory. Send an email with your requirements. Be sure to include process, size and temperature requirements.

Request a quotation:
industry@hotkilns.com





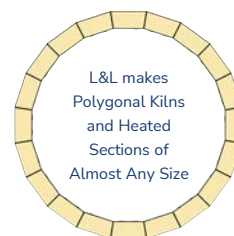
Inconel Retorts For
Atmosphere Control



Super Insulated Kilns
For High Temp Use



Heat-Treating Bell Kiln
For Drill Bits



L&L makes
Polygonal Kilns
and Heated
Sections of
Almost Any Size

CUSTOM LARGE POLYGONAL KILNS

hotkilns.com/kiln-types/large-polygonal

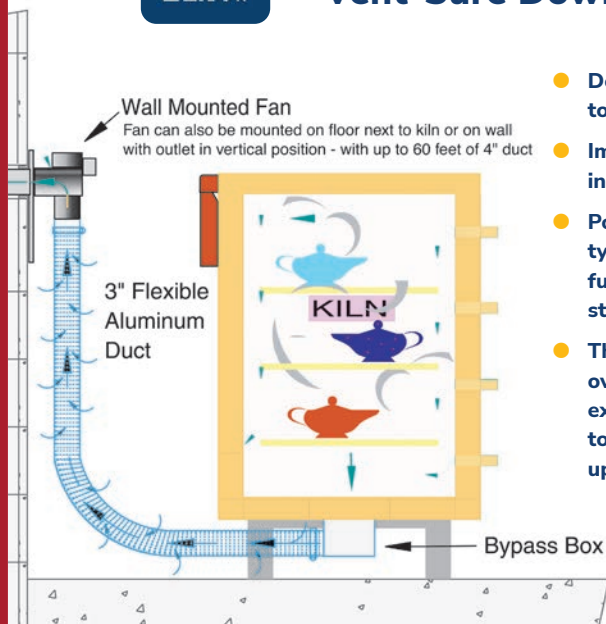
Custom polygonal kilns with 4-1/2" of firebrick are available by special quote. L&L can make almost any diameter and any height in multiples of 4.5" high sections. There are three elements per 9" high section. The bottom is typically 4-1/2" of K23 brick. The top is typically made of 4" thick folded and formed ceramic fiber modules. Temperatures are limited to 2350°F (1285°C).





KILN VENTS AND ACCESSORIES

Vent-Sure Downdraft Vent System



- Downdraft venting pulls air down to bottom of kiln
- Improves temperature uniformity inside the kiln
- Powerful 130 CFM fan motor, typically mounted on wall, allows fumes to be under vacuum in your studio
- The strong fan motor helps overcome static pressure in long exhaust lines. The duct may be up to 60 feet in length, and include up to four 90° bends

- 120 volts with on/off switch on cord (240 volts available)
- 8 foot long flexible aluminum duct
- Bypass collection box mounted on kiln allows adjustment of venting
- Fan motor, mounted away from the kilns, stays cool and no vibration transmitted to the kiln
- Multi-Mount Bracket comes with the Vent System - allows you to mount vent motor in various positions.
- Three-year Limited Warranty
- c-MET-us Listed to UL499 standards for use on c-MET-us listed L&L Kilns (Easy-fire, School-Master, Jupiter, Davinci, eFL)



VENT DOUBLER

You can get a vent doubler option which allows you to vent two kilns that are each up to 10 cubic feet. (Note: Consider buying the Multi-Mount Bracket). Includes all parts necessary to vent two kilns - up to 10 cubic feet each with one vent.

(hotkilns.com/doubler)

(M-V-MVENT/DB)

Vent-Sure for 120 Volts (primarily used in the USA)

(M-V-VENT/00)

Vent-Sure for 220-240 Volts (Usually non-USA)

(M-V-VENT/41)

EXTRA LONG FLEX DUCT -3 ft to 15 ft heavy duty flexible duct

(M-V-DUCT/15)



VENT CONTROL

The Vent Control allows you to automatically control the operation of the Vent-Sure kiln vent with one of the outputs from the DynaTrol (or Genesis).

(hotkilns.com/vent-control)

(M-V-CNTL/00)



MULTI-MOUNT BRACKET

Allows for easy installation anywhere; may function as a floor stand or wall-mount. Included with vent kit.

● TYPE S THERMOCOUPLES

The best thermocouple for constant high fire applications. There is no thermocouple drift and they will almost never need replacing. Priced per thermocouple. For a single-zone kiln you will need one, for a two-zone kiln two, and for a three-zone kiln three. Note that kilns with four or more sections still only have a three-zone control.

● hotkilns.com/type-s
T-G-SJUP/UG

● CUSTOM OPTIONS

Discuss your custom needs with us. We customize our kilns for industrial applications and special ceramic needs. We can make very tall kilns, very large diameter kilns, add special holes, make ceramic fiber tops, SSRs, and add insulation. We have many years of industrial and special design experience.

● SOLID STATE RELAYS

Industrial grade solid state relays are quiet and result in longer element life because the switching time is so fast the elements don't heat and cool as much the way they will with regular mechanical contactors. The whole system includes heat sinks, special fast acting fuses, cooling fan and extra safety relays.

(hotkilns.com/kiln-accessories/solid-state-relays)

● **SSR Power Control for 2 Circuit**
(L-X-SSRS/02)

● **SSR Power Control for 5 Circuit**
(L-X-SSRS/05)

● **SSR Power Control for 3 Circuit**
(L-X-SSRS/03)

● **SSR Power Control for 6 Circuit**
(L-X-SSRS/06)

● **SSR Power Control for 4 Circuit**
(L-X-SSRS/04)

● **Note:** Panels with 6 circuits need to use the larger NEMA1 panel



QUAD ELEMENTS

Four rows of elements for each 9" kiln section. For maximum high-fire element life. The combination of 1/2" diameter element coils, doubled surface area of the Quad element design, and superior heat transfer of L&L's patented ceramic element channels, make this the best element system in the world today. Quad elements are available as an option on most L&L kilns. They are standard on eQuad-Pro and JH Series.

(hotkilns.com/quad-elements)

APM SINTERED ELEMENTS

For even greater element life we offer APM alloy elements. This is a higher temperature alloy and provides approximately 3 times the life of regular elements - but are very expensive.

(hotkilns.com/apm)

HIGH ALUMINA SHELF MATERIAL

L&L shelves are made of strong, dense, press-molded (not cast) high alumina cordierite body designed for high fire with little warping.



DYNATROL OPTION

Traditional 24-Key pad. May be substituted for Genesis, with no change in price.



NEW ROLLING KILN STAND

L&L's rolling kiln stand features heavy gauge aluminized steel construction with multiple bends for extra strength, rubber swivel locking casters, integrated vent collection box mounts, and guide posts for the kiln. Each size is fitted to the kiln.

The vent collection box is not included. It is sold with the Vent-Sure System.

Contact L&L at ***industry@hotkilns.com***
to discuss your application

More Information & Support at hotkilns.com

Prices are always current on our website. Find complete specifications, support videos, photos, parts, PDF Library, and thousands of pages of knowledgebase information easily, using our sophisticated search engine.



TRUST YOUR KILN

505 Sharptown Road • Swedesboro, NJ 08085
Phone: 856.294.0077 • Fax: 856.294.0070
info@hotkilns.com • hotkilns.com

INDUSTRY
CATALOG 2023

