

Fuego International Craft Kilns

This is the perfect kiln for international use on 13 or 15 amp 220 volt circuits. It is the largest kiln for those circuits that reaches Cone 10. There is also a 240 volt version that works on a 20 amp circuit for the USA (and a 25 amp 208 volt version).

- **18" (45.7 cm) High**
13.5" (34.3 cm) Diameter
1.5 Cubic Feet (43 Liters)
- **Hard Ceramic Element Holders protect brick and make element changes fast and easy**
- **Made for home use on international 13 or 15 amp 220 volt circuits and 20 Amp, 240 Volt circuits in the USA**
- **One-Touch Control for Simplicity**
- **Protected Thermocouple**
- **Door Shut-Off Safety Switch meets CE Requirements**
- **Super-Strong Aluminized Steel Stand**
- **Extra Vent Hole in lid for manual venting**
- **For Hobbyists and Small Format Potters**



Unique L&L Features with Lasting Benefits

CONE 10 TEMPERATURE RATING

Cone 10, 2350°F, 1290°C.

EXTRA INSULATION

3" (7.6 cm) firebrick backed up with 1/8" (3 mm) of ceramic fiber paper (Non-RCF which meets European requirements).

PATENTED CERAMIC ELEMENT HOLDERS

Protect brick from loading damage, keep elements from falling out of grooves, make changing elements easy, and optimize heat transfer to load. Kiln lasts longer! No pins. (hotkilns.com/ceramic-holders)



BRICK COATING FOR DURABILITY

Proprietary reflective brick coating. This helps firebrick stay strong on the surface, helps prevent dusting on your work, and keeps the kiln clean inside. (hotkilns.com/reflective-coating)

HEAVY-DUTY LARGE ELEMENTS

Four heavy-duty elements. *Quad elements, which double the element wire, are optional. See Page 5.*

EXTRA CASE CLAMPS

Stainless worm gear case clamps keep case together and allow for adjustment over time. Three per 9" section and two on the top and bottom. (hotkilns.com/case-clamps)

HINGE INTEGRATED IN CONTROL PANEL

Chains secure the lid in place when open. (hotkilns.com/simple-hinge)



CONTROL PANEL

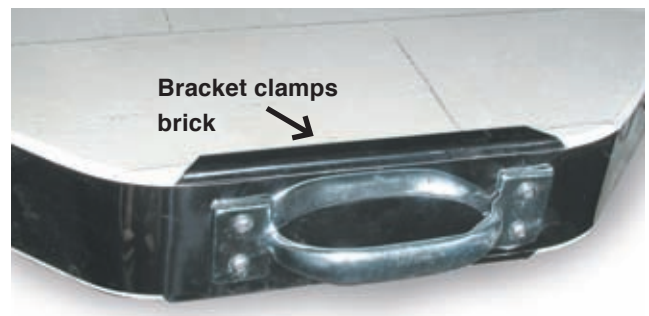
All controls and components are mounted in a control panel that is also forms the hinge. A layer of insulation and a separation plate helps keep the controls cool. The control box can be easily removed for servicing. An On/Off switch and control fuse are included.

DOOR SHUT OFF SWITCH

Positive shut off of element power when lid is open. Meets European Directives.

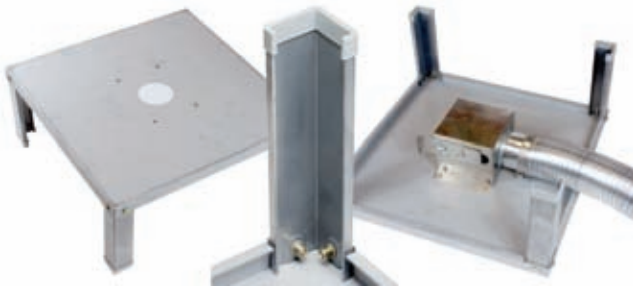
LID BRICK IS SECURED WITH CLIPS

Stainless Steel clips secure lids - not friction. (hotkilns.com/lid-clips)



HEAVY-DUTY FULL-SUPPORT STAND

Heavy-duty 14 gauge solid stand with multiple bends for strength. Bolt on legs. Feet protectors included. Optional Vent Bypass Collection Box bolts onto bottom of stand with included studs.
(hotkilns.com/full-stand)



EASY ASSEMBLY WITH SECTIONAL CONSTRUCTION

Two 9" high sections for a total height of 18". Kiln comes assembled but can easily be taken apart for moving. Stainless steel wrapped around brick with 3 adjustable clamps. All corrosion resistant stainless screws are used in the case construction.
(hotkilns.com/sectional-craft)

CORROSION RESISTANT CONSTRUCTION

Stainless steel wrapped around brick. All stainless screws on case. Stand is galvanized. Hinge is stainless steel. Control box is powder coated steel.
(hotkilns.com/case)

SOLID PEEPHOLE PLUGS

Solid (non-fragile) ceramic plug with heat-locked mushroom head. 1" diameter full-view non-tapered. There are two in the kiln body and one in the center of the lid for venting
(hotkilns.com/peephole-plugs)



ONE-TOUCH PROGRAM

Control: One-Touch™ Intuitive Kiln Control easily fires bisque and glaze programs. It is also easy to adjust simple parameters like cone, delay, hold, heat-up and cool-down rates. There are also four custom ramp/hold programs with 8 segments each.
(hotkilns.com/one-touch)



CERAMIC ELEMENT CONNECTIONS

Proprietary all-ceramic element connection block makes changing elements easy.
(hotkilns.com/ceramic-terminal)



HEAVY-GAUGE TYPE K THERMOCOUPLE PROTECTED WITH CERAMIC TUBE

Type K 8 gauge thermocouple is protected by a ceramic protection tube. (hotkilns.com/protected-thermocouples)



MERCURY FREE RELAYS

Mercury free relays are standard.

POWER CORD & PLUG INCLUDED

See page 7 for details.

COMPLETE VISUAL INSTRUCTIONS

No one has a better or more complete instruction manual. Our visual instructions address the needs of the artist, the installer, and the repair person. You get a fully illustrated operation and service manual. Many instructional videos are available. (hotkilns.com/videos)

L&L KILNS ARE EASY TO TROUBLESHOOT

Open up any L&L kiln control panel and see how easy it is to check amps, element resistance, and voltage. No other kiln can be serviced as quickly, easily, or inexpensively as an L&L kiln.

THREE-YEAR WARRANTY

See hotkilns.com/warranty. Email, web and phone support.

IN-DEPTH SUPPORT

One customer said: "I am truly impressed with your website, it is more than informative and your products are well designed. The fact that all the information, including repair manuals, are listed, speaks well of your dedication to customer service." Our website has thousands of pages of technical help - all easily searchable - plus we provide expert support with phone and email.

SUSTAINABLE MANUFACTURING

We use solar energy as our primary energy source.

SUPERIOR PACKAGING

Kilns are securely packed with tubes of foam molded to the kiln. Kilns are shipped in skidded cartons.

MET UL499 LISTING



c-MET-us listed to UL499 standards assures highest safety standards. (hotkilns.com/met)



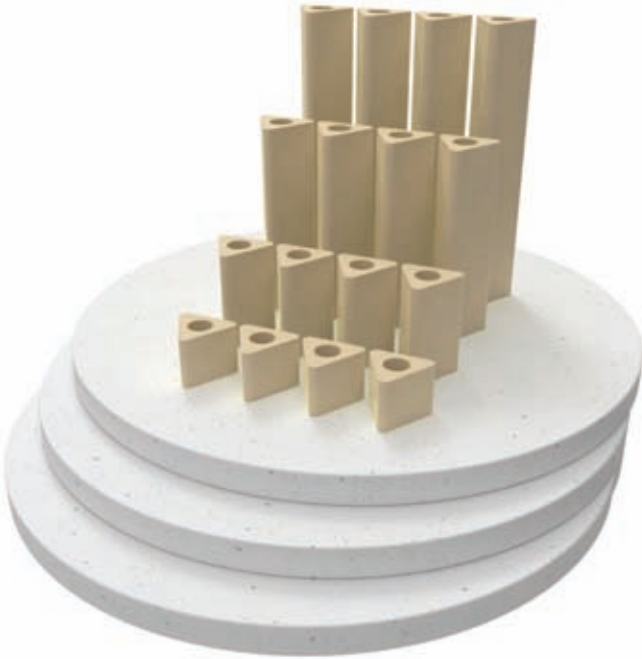
Stop worrying about loading your kiln! Load with confidence. You won't damage the fragile firebrick, touch dangling elements, or damage the protected thermocouples.

Elements can be changed in minutes without damaging the firebrick. NO PINS!

Accessories

CONE 11 FURNITURE KIT

Three 12" (30.5 cm) full round shelf, four each 1" (2.5 cm), 2" (5 cm), 4" (10.1 cm) and 6" (15.2 cm) triangular posts. (hotkilns.com/kiln-furniture)



QUAD ELEMENT DESIGN

The combination of 1/2" diameter element coils, the doubled surface area of the Quad element design, and superior heat transfer of L&L's patented ceramic element holders, make this the best element system in the world today. (hotkilns.com/quad-option)



APM ELEMENTS

Special sintered alloy provides the ultimate in element life. The special sintered alloy inhibits grain growth and resistance change in the elements. (hotkilns.com/apm)

Dimension & Weight Specifications

Inside Dimensions: 13.5" (34.3 cm) diameter by 18" (45.7 cm) high, 7 sides

Outside Dimensions: 23" (58 cm) Wide by 27" (69 cm) Deep by 51" (130 cm) High

Volume: 1.5 cubic feet (43 liters)

Shipping Dimensions: 36" (92 cm) Wide by 36" (92 cm) Deep by 51" (130 cm) High (with or without Furniture Kit)

Shipping Weight: 200 lbs (91 Kg) for kiln. 235 lbs (107 Kg) for kiln with furniture kit.

Moving and installation: This kiln comes assembled but can be quickly disassembled and reassembled to move through any door or up stairs. It comes packed in a skidded carton with secure foam-in-place packaging.

MORE: See each model page on hotkilns.com to download PDF General Dimension Drawings for more outside and inside dimensions, minimum space requirements, BTU ventilation requirements, and kiln weight. See the Shipping Tab on the model page for complete shipping dimension and shipping weight information.

Moving and installation: The kiln comes assembled but can be quickly disassembled and reassembled to move through any door or up stairs. It comes packed in a skidded carton with secure foam-in-place packaging.



Electrical Specifications

Model Numbers	Part Number	Volt/ Phase	Watts	Amps	Wire Size	Fuse Size	Power Connection
F1418-3-208	K-F-141B/21	208/1P	3,840	18.5	12 ga	25 Amps	14-30 Cordset
F1418-3-240	K-F-141B/31	240/1P	3,840	16.0	14 ga	20 Amps	6-20 Cordset
WORLD VOLTAGES							
F1418-3-230-UK	K-F-1418/4K	230/1P	3,000	14.0	14 ga	15 Amp	UK Cord
F1418-3-220	K-E-148B/4E	220/1P	3,300	15.0	14 ga	15 Amp	EU Cord
F1418-3-240-AU	K-E-1488/4A	240/1P	3,600	15.0	14 ga	15 Amp	AU Cord

MET UL499 Listing: All USA models are c-MET-us listed to UL499 standard.

CE: These kilns are CE certified for use in Europe and the UK if bought through a UK or European distributor.

Volts, Watts and Amps: Fuego kilns are designed to operate on the voltage and and amperage of typical household current in each country. Because there are so many it is impossible to list all the possibilities.

Plug: Kiln plugs into an appropriate household circuit.

Examples: In the UK, Hong Kong, and Singapore the amperage is limited to 13 amps, voltage is 220-240 and watts is appoximately 3000. In most of Europe amperage is limited to 15 amps, voltage is 220-240 and watts is approximately 3450. In Australia the amperage is limited to 15 amps, the voltage is 240 and the watts are approximately 3600.

Cone Rating: All models are rated to Cone 10.

Wiring Diagrams: See **the Electrical Tab** for each kiln model to get the wiring diagram for each voltage.

Elements: All elements are of equal resistance value. Quad elements are the same resistance but longer and thicker.

What Makes Fuego Kilns Built to Last?

Reflective Coating on all brick surfaces helps protect brick and seals pores.

Protected Thermocouple

Solid Ceramic Peephole Plugs with 1" diameter straight view have wide viewing area and won't easily fall out or break. Two on sides and one on the top for manual venting.

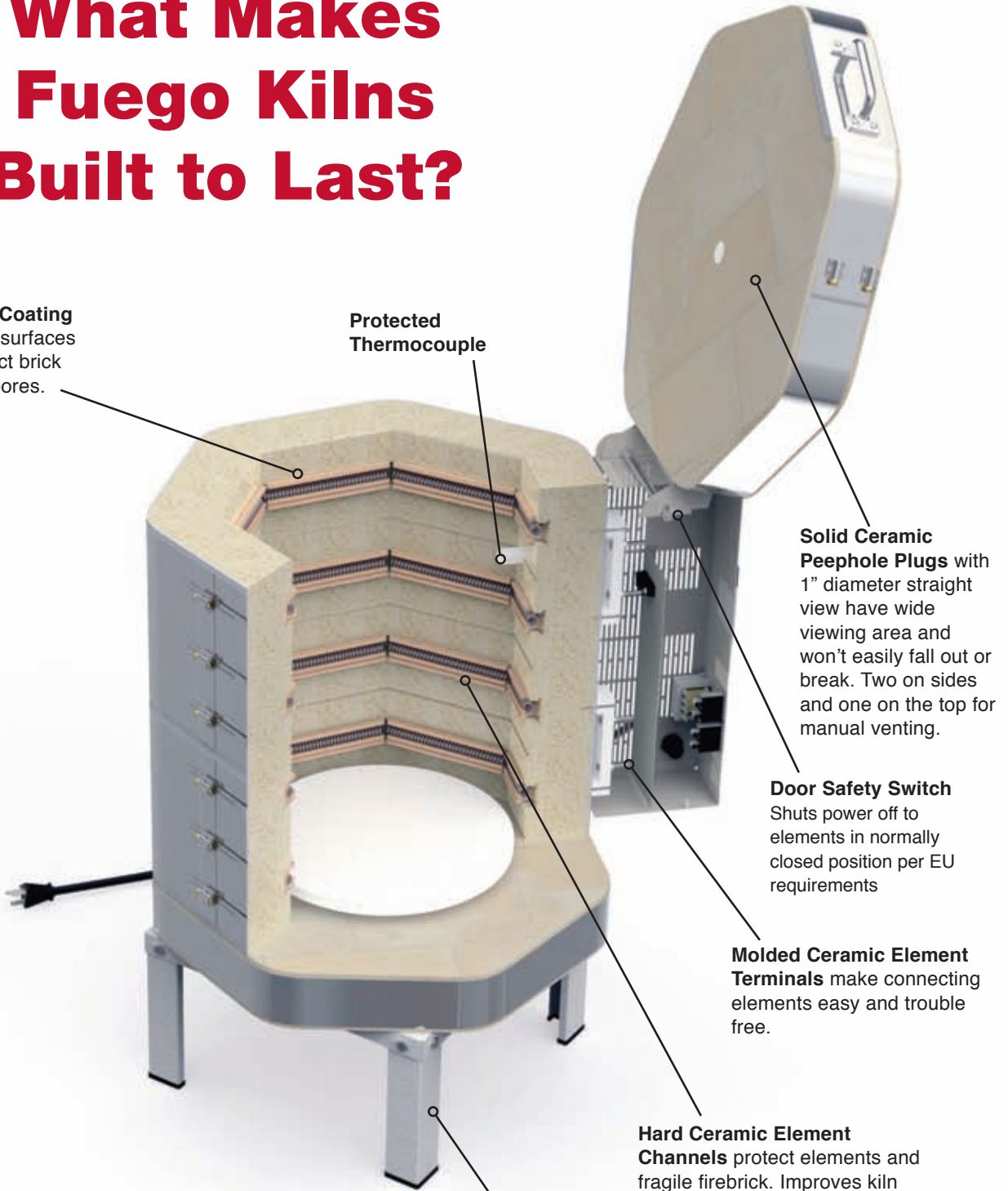
Door Safety Switch
Shuts power off to elements in normally closed position per EU requirements

Molded Ceramic Element Terminals make connecting elements easy and trouble free.

Hard Ceramic Element Channels protect elements and fragile firebrick. Improves kiln life dramatically. Provides wider and more reflective surface for infrared heat transmission.

Heavy-Duty Full-Support Stand makes kiln sturdy.

Fuego Kilns come with a Three-Year Warranty because L&L kilns last longer.



505 Sharptown Road • Swedesboro, NJ 08085
Phone: 856.294.0077 • Fax: 856.294.0070
sales@hotkilns.com • hotkilns.com

KILNS BUILT TO LAST

Bulletin No: FG-0520